

NHQA

CONDOS

TULUM





TULUM

ES UN LUGAR MARAVILLOSO, IDEAL PARA LOS AMANTES DE LA NATURALEZA, TULUM TE SUMERGE EN LA CULTURA MAYA Y PLAYAS, DE UNA BELLEZA ÚNICA, RECONOCIDAS COMO LAS MEJORES DE MÉXICO Y CENTRO AMÉRICA. SU BELLEZA NATURAL LO HACE UN LUGAR MÁGICO CON UNA EXPERIENCIA ÚNICA PARA TUS SENTIDOS Y ESPÍRITU, PERMITIÉNDOTE MARAVILLARTE EN VIVIR EN ELLA.

/ IT IS A WONDERFUL PLACE, IDEAL FOR NATURE LOVERS, TULUM IMMERSSES YOU IN THE MAYAN CULTURE AND BEACHES, OF A UNIQUE BEAUTY, RECOGNIZED AS THE BEST IN MEXICO AND CENTRAL AMERICA. ITS NATURAL BEAUTY MAKES IT A MAGICAL PLACE WITH A UNIQUE EXPERIENCE FOR THE SOUL AND THE SENSES, ALLOWING YOU TO LIVE IN A STATE OF AWE.



NHOA

CONDOS
TULUM

HAY LUGARES QUE OCUPAN UN ESPACIO MATERIAL Y ESPIRITUAL, DONDE LO EXTERIOR Y LO INTERIOR SE FUNDEN Y RECOMBINAN... DONDE ABRIMOS NUEVAS SENDAS, ENCONTRANDO LO QUE ESTÁ ESPERÁNDONOS DESDE SIEMPRE, LUGARES DONDE SOMOS NOSOTROS MISMOS.

/ THERE ARE PLACES THAT OCCUPAY A MATERIAL AND SPIRITUAL PLACE, WHERE THE EXTERIOR AND INTERIOR GET TOGETHER AND RECOMBINED... WHERE WE OPEN NEW PATHS, FINDING WHAT HAS BEEN WAITING FOR US SINCE FOREVER, PLACES WHERE WE ARE OURSELVES.



UBICACIÓN



LOCATION

NHOA



CONDOS
TULUM

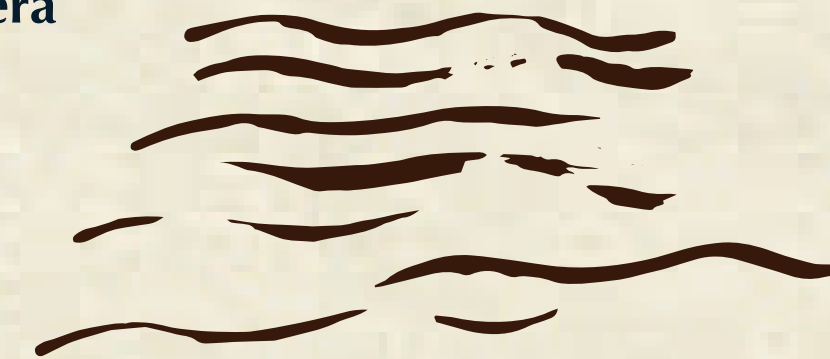
• Tulum Town
/Tulum Pueblo

Highway
/Carretera Federal

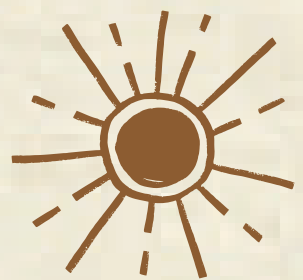


Archeological Zone
/Zona Arqueológica

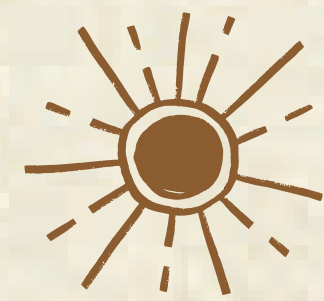
Touristic Area
/Zona Hotelera



Caribbean Sea
/Mar Caribe



PROYECTO



PROJECT

NHOA

CONDOS
TULUM

MÁS QUE UN DESARROLLO RESIDENCIAL, NHOA ES UNA COMUNIDAD FORMADA POR 36 DEPARTAMENTOS, UN ESPACIO QUE INVITA A LA TRANQUILIDAD Y EL DESCANSO EN UNA ATMÓSFERA DONDE SE APRECIA LA PRIVACIDAD PARA LA QUE FUE DISEÑADO.

EL PROYECTO SE CREÓ PENSANDO EN TENER COMPLETA ARMONÍA CON LO QUE TULUM REPRESENTA; NATURALEZA, QUIETUD, PLACIDEZ, ALEGRÍA, DELEITE, LIBERTAD Y CALMA. UN AMBIENTE QUE DA SIEMPRE LA BIENVENIDA E INVITA A QUEDARSE Y DISFRUTAR DE VIVIR EN EL PARAÍSO.

/MORE THAN A RESIDENTIAL DEVELOPMENT, NHOAH IS A COMMUNITY FORMED BY 36 APARTMENTS, A PLACE THAT INVITES REST AND TRANQUILITY IN AN ATMOSPHERE WHERE YOU CAN APPRECIATE THE PRIVACY FOR WHICH IT WAS DESIGNED.

THE PROJECT WAS PURPOSELY CREATED TO HAVE COMPLETE HARMONY WITH WHAT TULUM REPRESENTS; NATURE, QUIET, PLACIDITY, JOY, DELIGHT, FREEDOM AND CALM. AN ENVIRONMENT THAT ALWAYS WELCOMES AND INVITES YOU TO STAY AND ENJOY LIVING IN PARADISE.

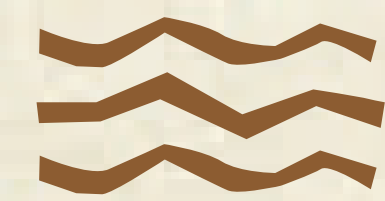








MASTERPLAN



MASTERPLAN

PLANTA BAJA

12 UNIDADES

* **2 UNIDADES TIPO A**
(2 RECAMARAS + TERRAZA + JARDÍN + PISCINA PRIVADA)

* **2 UNIDADES TIPO A**
(2 RECÁMARAS + TERRAZA + SWIM UP)

* **4 UNIDADES TIPO B**
(2 RECAMARAS + TERRAZA + JARDÍN + PISCINA PRIVADA)

* **4 UNIDADES TIPO B**
2 RECAMARAS + TERRAZA + SWIM UP)

LOW LEVEL

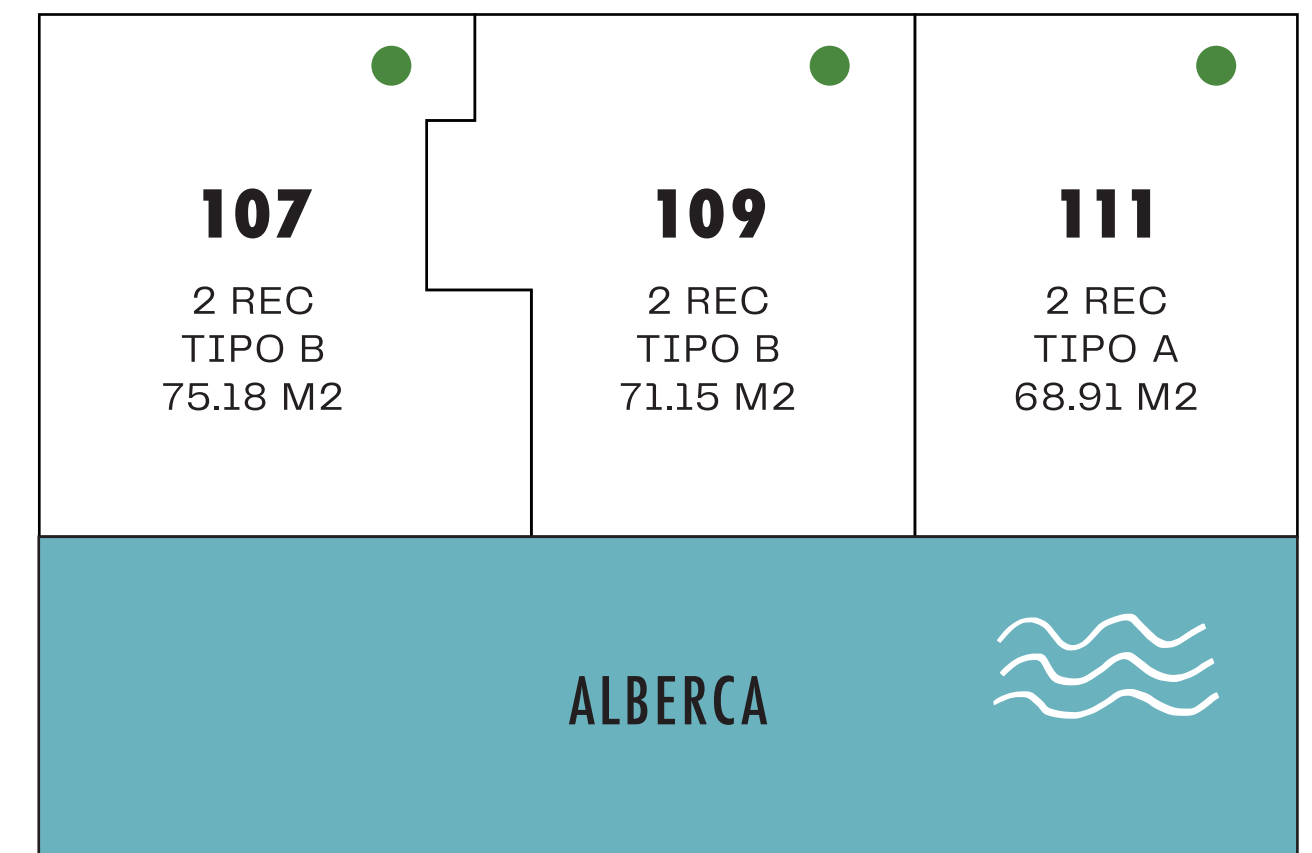
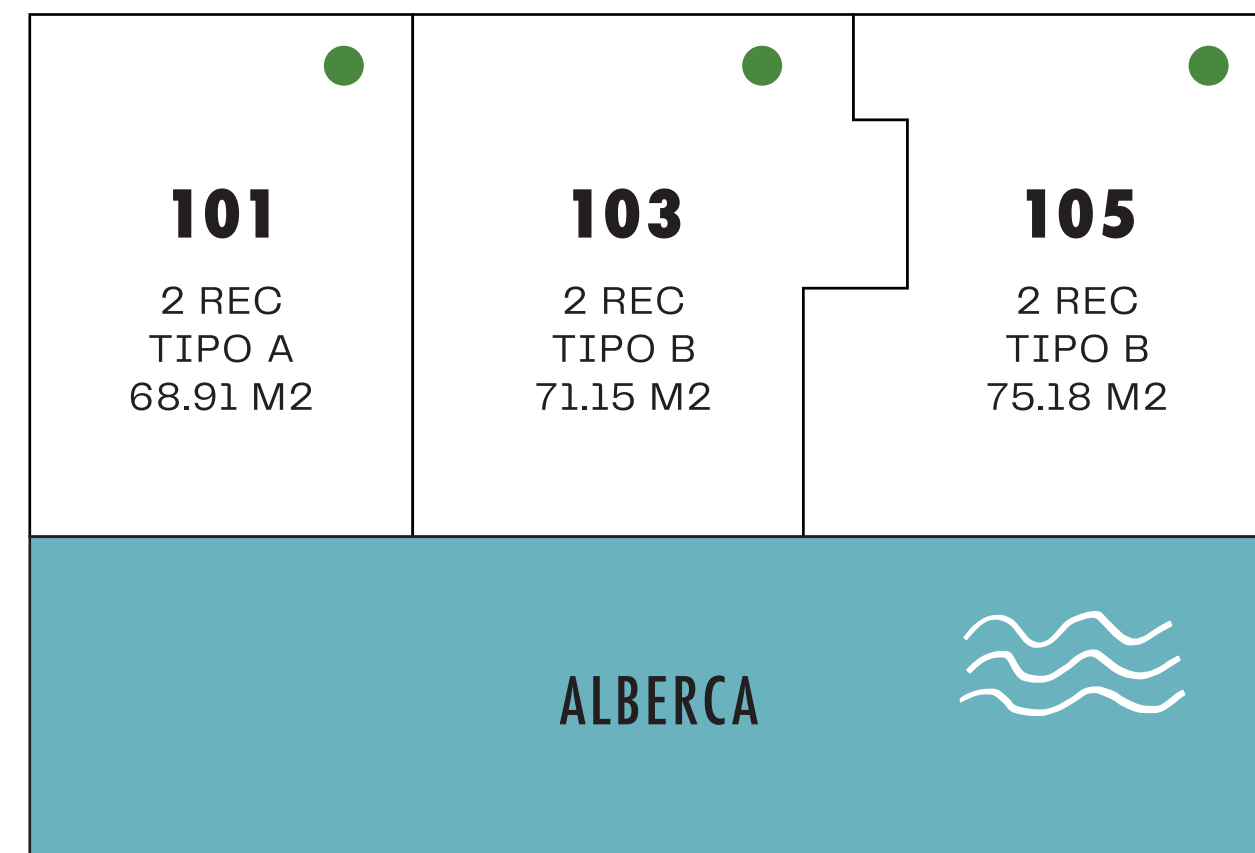
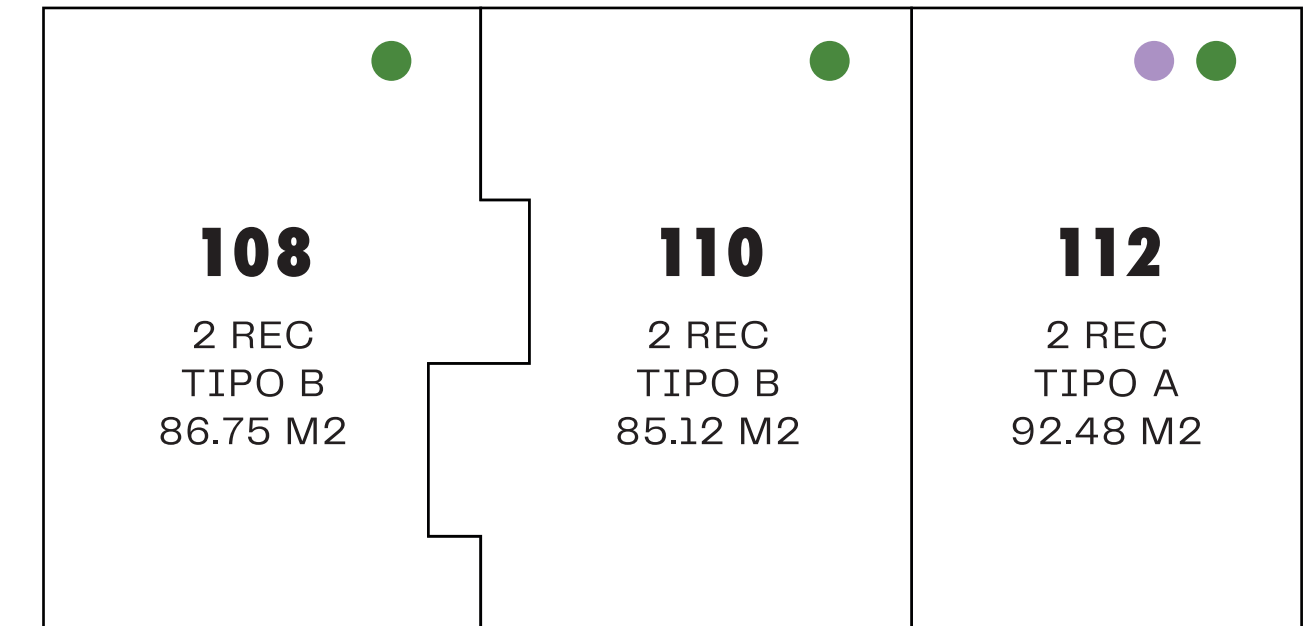
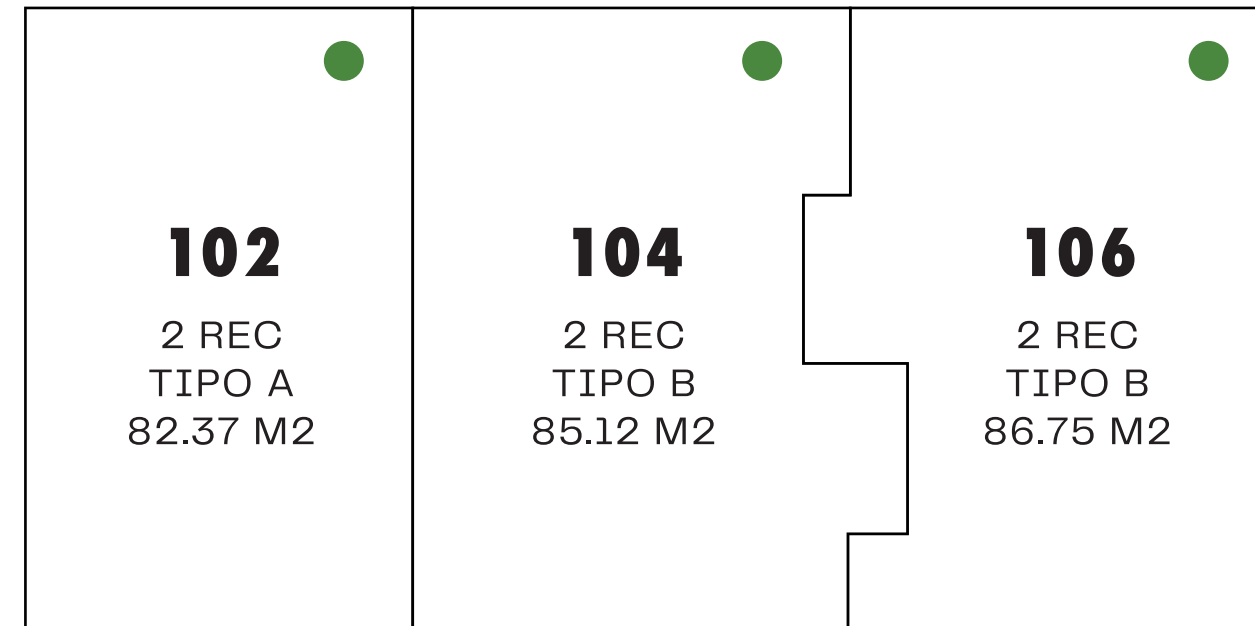
12 UNITS

* **2 UNIDADES TIPO A**
(2 BEDROOMS + TERRACE + GARDEN + PRIVATE POOL)

* **2 UNIDADES TIPO A**
(2 BEDROOMS + TERRACE + SWIM UP)

* **4 UNIDADES TIPO B**
(2 BEDROOMS + TERRACE + GARDEN + PRIVATE POOL)

* **4 UNIDADES TIPO B**
(2 BEDROOMS + TERRACE + SWIM UP)





PRIMER NIVEL

12 UNIDADES

* **4 UNIDADES TIPO A**
(2 RECAMARAS + BALCÓN)

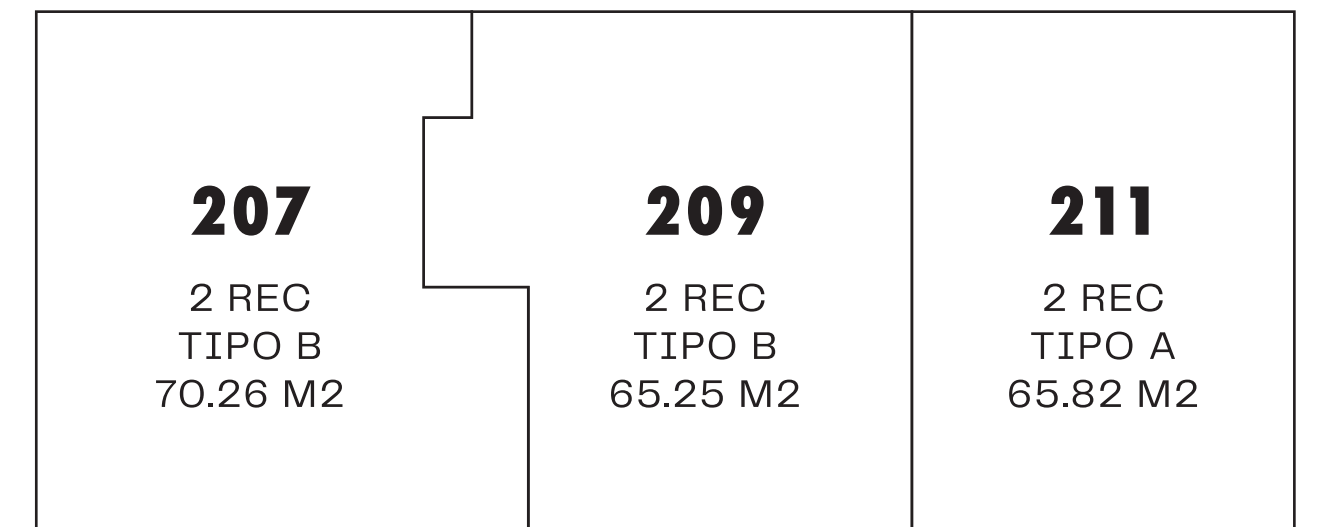
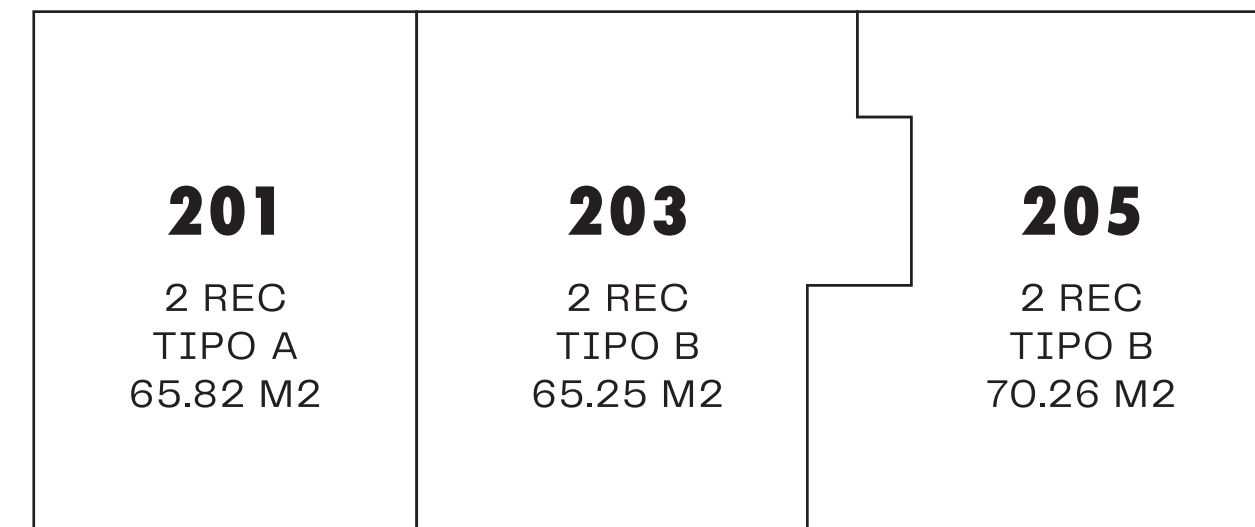
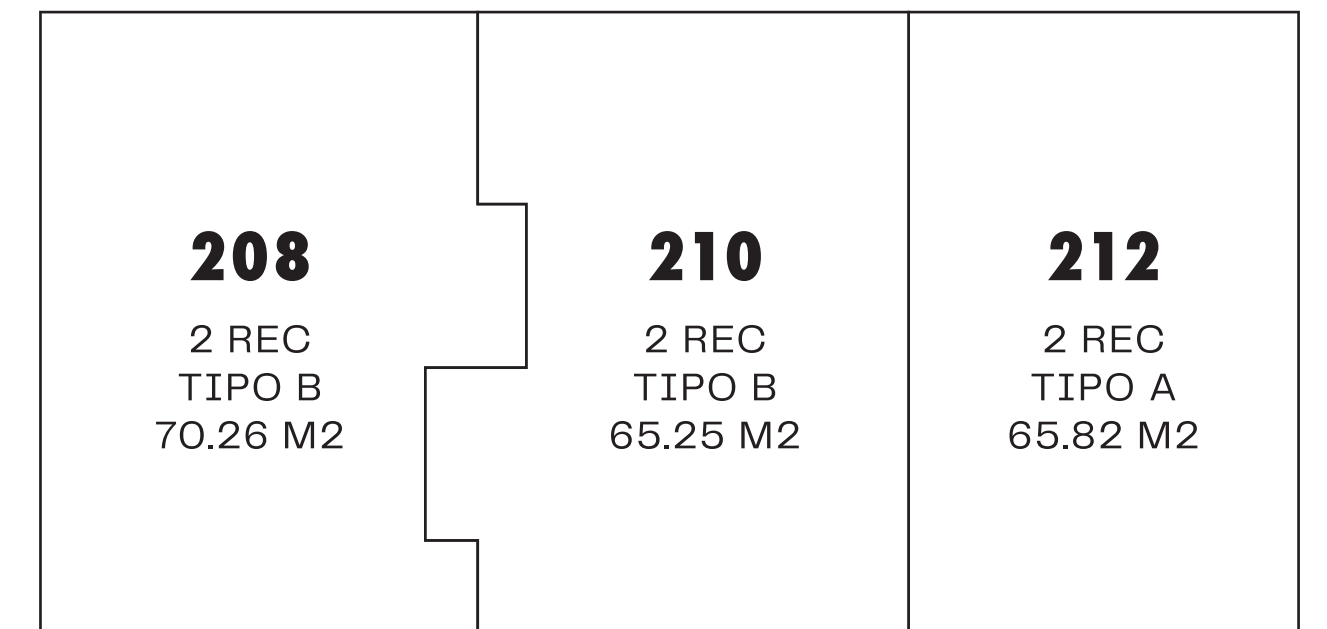
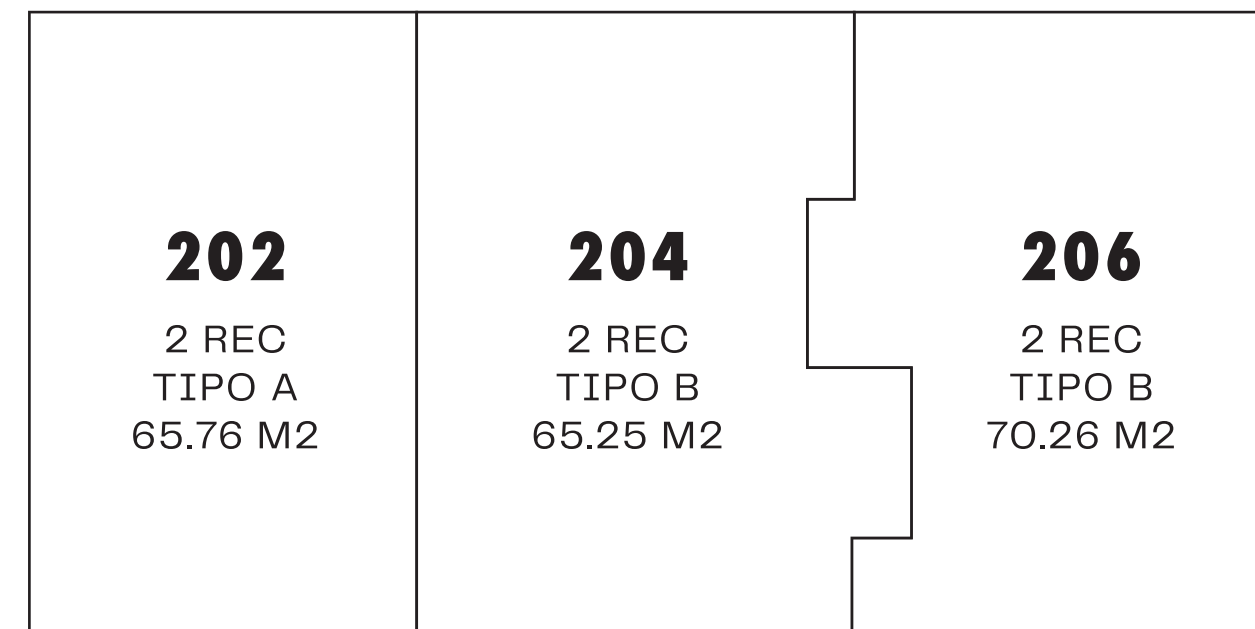
* **8 UNIDADES TIPO B**
(2 RECAMARAS + BALCÓN)

FIRST LEVEL

12 UNITS

* **4 UNITS MODEL A**
(2 BEDROOMS + BALCONY)

* **8 UNITS MODEL B**
(2 BEDROOMS + BALCONY)





SEGUNDO NIVEL

12 UNIDADES

* **4 UNIDADES TIPO A**
(2 RECAMARAS + BALCÓN)

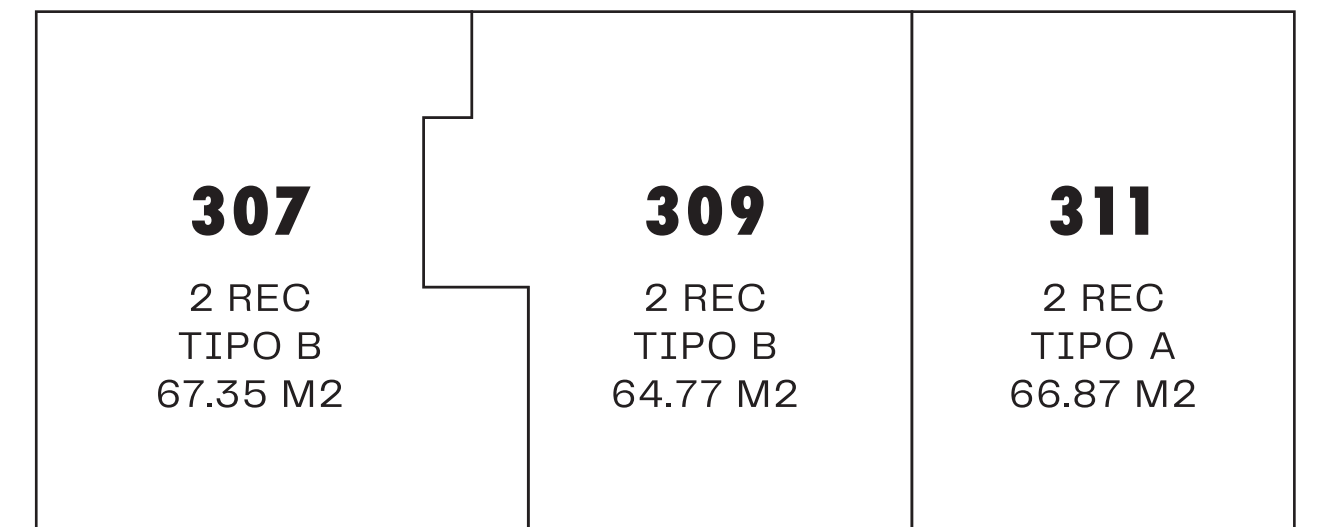
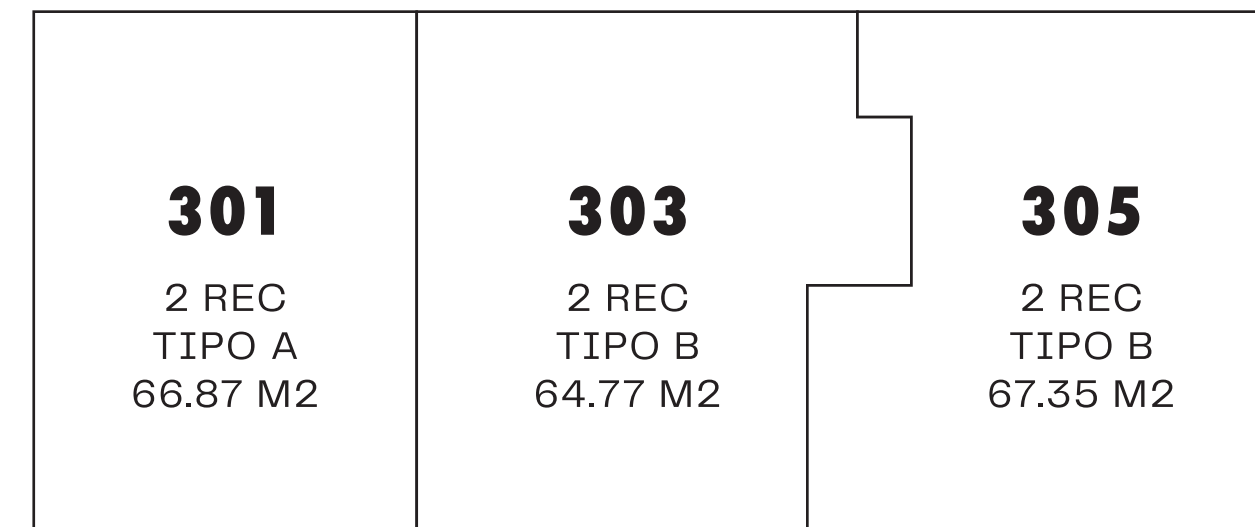
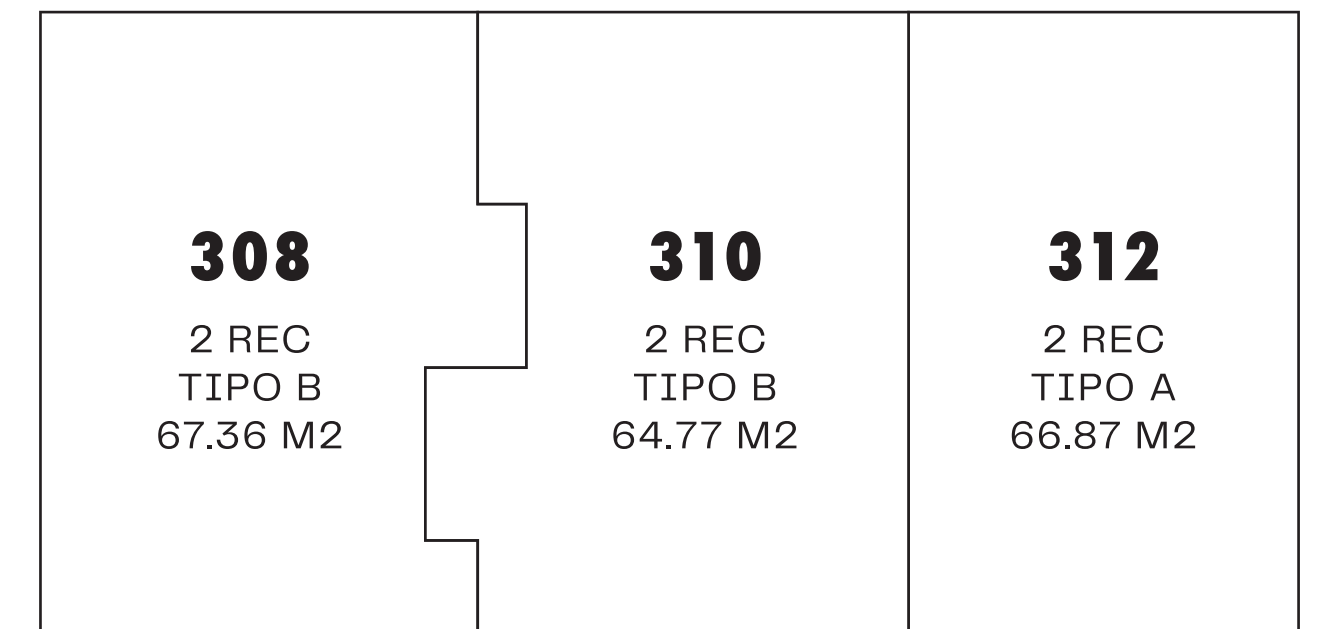
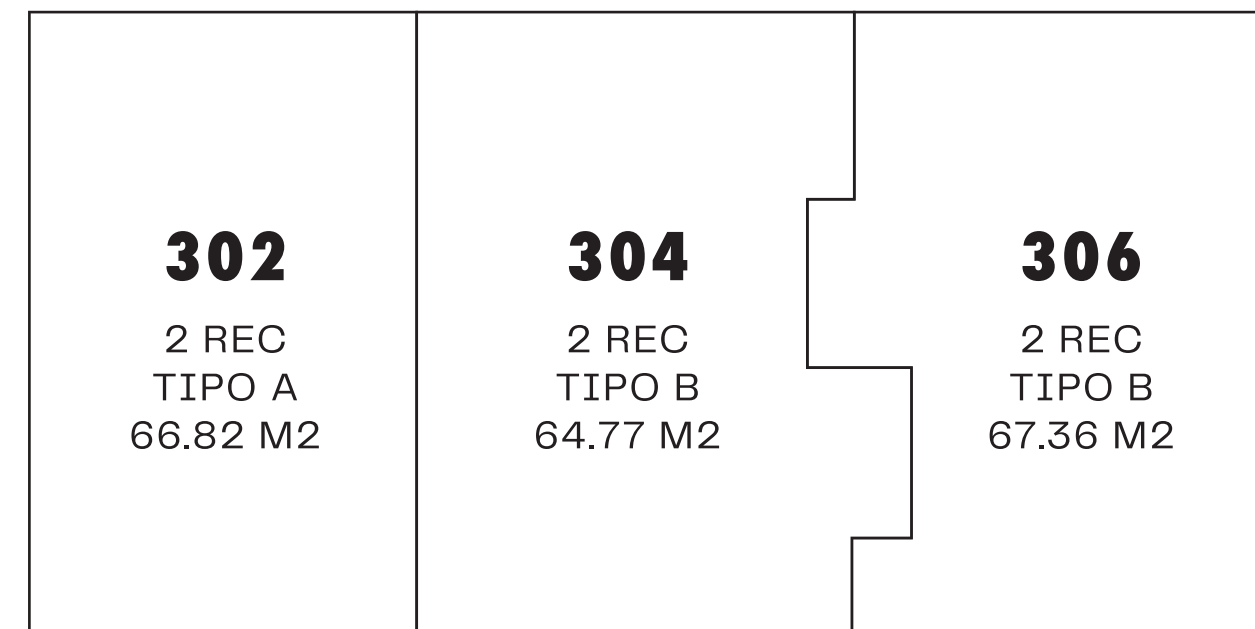
* **8 UNIDADES TIPO B**
(2 RECAMARAS + BALCÓN)

SECOND LEVEL

12 UNITS

* **4 UNITS MODEL A**
(2 BEDROOMS + BALCONY)

* **8 UNITS MODEL B**
(2 BEDROOMS + BALCONY)





AMENIDADES



AMENITIES

NHOA

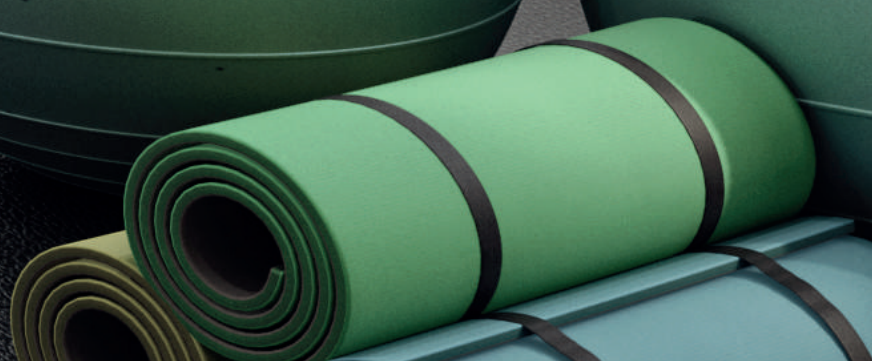
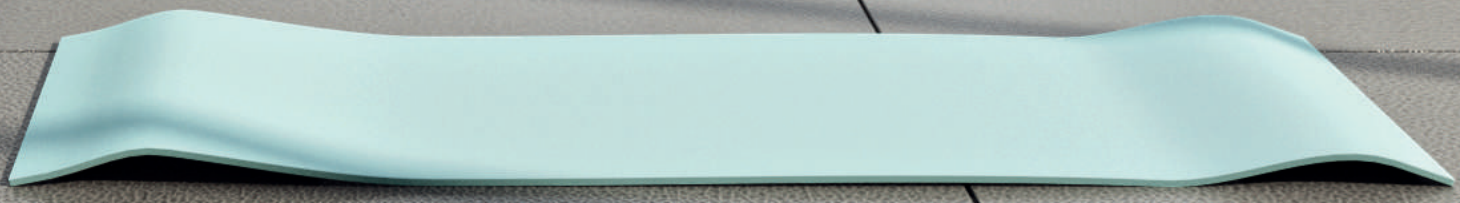
CONDOS
TULUM

GIMNASIO, TERRAZA DE YOGA, RESTAURANTES, ALBERCAS, ÁREA DE CAMASTROS,
RECEPCIÓN, VIVE EN UNA PRIVADA, BICICLETAS, ELEVADOR Y SEGURIDAD 24/7.

GYM, YOGA TERRACE, RESTAURANTS, POOLS, SUN BEDS, LOBBY, LIFE IN A GATED
COMMUNITY, BIKES, ELEVATOR AND SECURITY 24/7.













NHCA



NHQA

CONDOS

TULUM