



IL  LAGO

BEACH & GOLF | CAP CANA

*Lujosos apartamentos circundando un hermoso lago*

LUXURY SUITES SURROUNDING A BEAUTIFUL LAKE





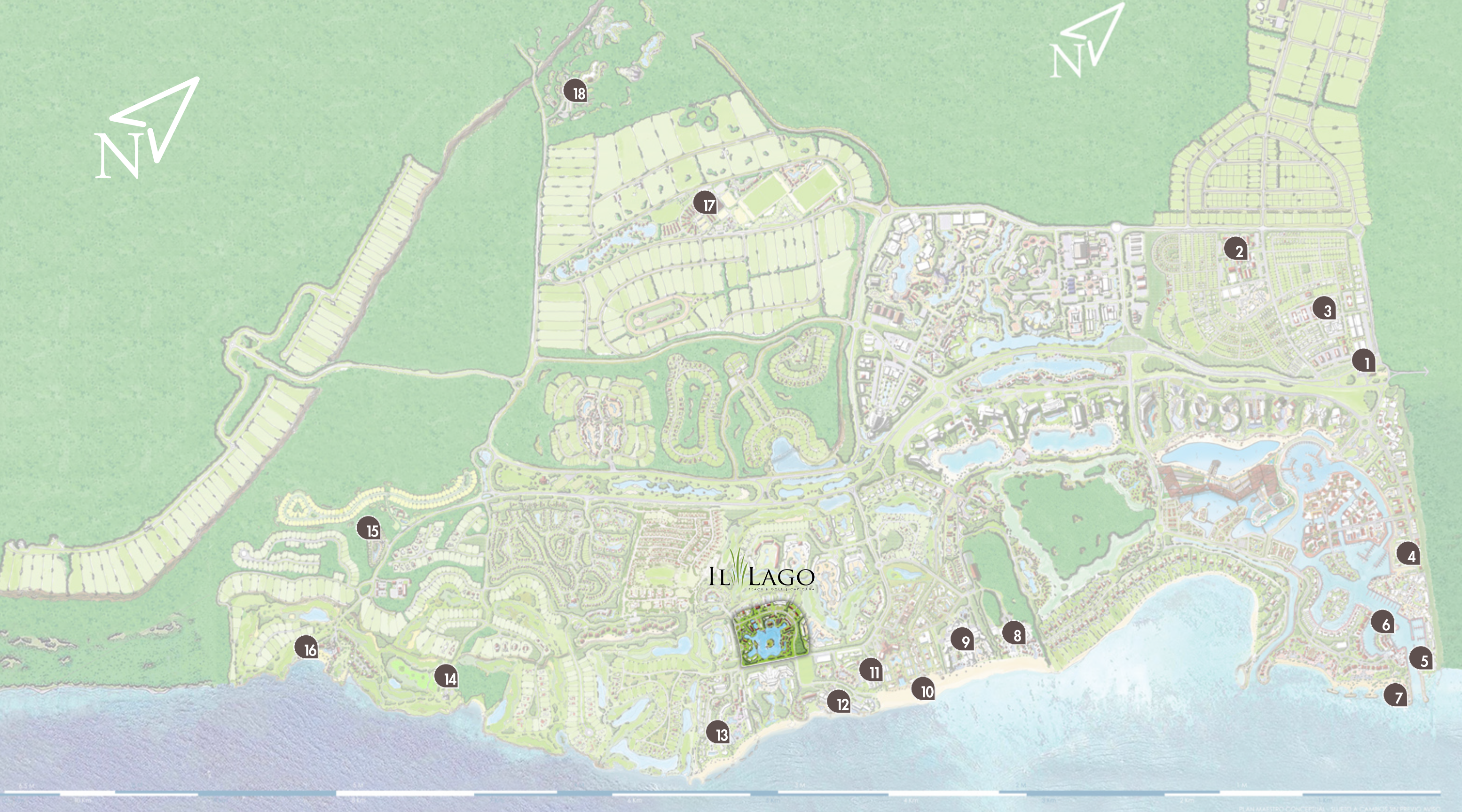


Ubicado en el sublime entorno de Cap Cana, Il Lago at Juanillo Beach es una exclusiva comunidad residencial de lujosos apartamentos que rodean un precioso lago, a pocos pasos de la espectacular playa de Juanillo y de los campos de golf Punta Espada y Las Iguanas, ambos de la firma y diseño del legendario jugador Jack Nicklaus.

*Disfrute la vida al aire libre*

ENJOY LIFE OUTDOORS

*Nestled in the sublime milieu of Cap Cana, Il Lago at Juanillo Beach is an exclusive residential community of luxury suites surrounding a gorgeous lake, only a few steps from the spectacular Juanillo Beach and from the golf courses Punta Espada and Las Iguanas, both signature and design of the legendary player Jack Nicklaus.*



**MASTER PLAN DE AMENIDADES Y HOTELES EN EXISTENCIA:**

Con 8 kilómetros (5 millas) de costa y 5 kilómetros (2 millas) de playas de arena blanca, Cap Cana está conceptualizado en un Plan Maestro, de 120 millones de metros cuadrados, cuenta con regulaciones de construcción y diseño para todos sus sub-proyectos. La infraestructura de servicios de Cap Cana está terminada y en operación.

**MASTER PLAN OF HOTELS AND EXISTING AMENITIES:**

With 8 kilometers (5 miles) of coastline and 5 kilometers (2 miles) of white sand beaches, Cap Cana is conceptualized in a Master Plan of 120 million square meters, and has construction and design regulations for all its sub-projects.

1. Centro de Informacion y Ventas  
*Information Center*
2. Heritage School
3. Ciudad Las Canas
4. Fishing Lodge by Ancora
5. TRS Palladium
6. Marina Cap Cana
7. Api Beach
8. Secret Cap Cana
9. Hyatt Ziva y Hyatt Zilara
10. Juanillo Beach
11. Margaritaville Island Reserve
12. Sanctuary By Playa Resorts
13. Sotogrande at Cap Cana
14. Punta Espada Golf Club
15. Eden Roc Cap Cana
16. Eden Roc Cap Cana Beach Club
17. Los Establos
18. Scape Park



DIBUJOS CONCEPTUALES SUJETOS A CAMBIOS. / CONCEPTUAL DRAWINGS SUBJECT TO CHANGE.

## Plano de conjunto

### SITE PLAN

1. Entrada | Lobby
2. Area Social | Social Area
3. Entrada Estacionamiento  
Parking lot entrance
4. Gimnasio | Gym
5. Cancha de Tenis | Tennis Court
6. Piscina | Pool
7. Lago | Lake
8. Area Infantil | Playground
9. Edificio | Building No. 1 (6 niveles | 6levels)
10. Edificio | Building No. 2 (6 niveles | 6levels)
11. Edificio | Building No. 3 (6 niveles | 6levels)





APARTAMENTO TIPO A: UNA HABITACION PLUS / APARTMENT TYPE A: ONE BEDROOM PLUS



CARACTERISTICAS DEL APARTAMENTO / APARTMENT FEATURES

- Apartamento de una habitación de 103m<sup>2</sup> (1,108.68Ft<sup>2</sup>)
- Sala-comedor
- Family room
- Cocina
- Baño de visita
- Pre-instalación para lavadora/secadora
- Habitación principal con walk-in clóset y baño
- Vista al lago
- One bedroom apartment of 103m<sup>2</sup> (1,108.68Ft<sup>2</sup>)
- Living-dining room
- Family room
- Kitchen
- Guest bathroom
- Pre-installation for washer/dryer
- Master bedroom with walk-in closet and bathroom
- Lake view

NO.	TIPO TYPE	NIVEL LEVEL
<b>EDIFICIO / BUILDING: 1</b>		
152	A	5
142	A	4
132	A	3
122	A	2
112	A	1
<b>EDIFICIO / BUILDING: 2</b>		
262	A	6
252	A	5
242	A	4
232	A	3
222	A	2
212	A	1
<b>EDIFICIO / BUILDING: 3</b>		
363	A	6
362	A	6
353	A	5
352	A	5
343	A	4
342	A	4
333	A	3
332	A	3



APARTAMENTO TIPO B: DOS HABITACION / APARTMENT TYPE B: TWO BEDROOMS



NO.	TIPO TYPE	NIVEL LEVEL
EDIFICIO / BUILDING: 1		
161	B	6
151	B	5
141	B	4
131	B	3
121	B	2
111	B	1
EDIFICIO / BUILDING: 2		
251	B	5
241	B	4
231	B	3
221	B	2
211	B	1
EDIFICIO / BUILDING: 3		
351	B	5
341	B	4
331	B	3
321	B	2

CARACTERISTICAS DEL APARTAMENTO / APARTMENT FEATURES

- Apartamento de dos habitaciones de 170m<sup>2</sup> (1,829.86Ft<sup>2</sup>)
- Habitación principal con walk-in clóset y baño integrados
- Habitación secundaria con walk-in clóset y baño
- Sala-comedor
- Cocina con desayunador
- Balcón
- Baño de visita
- Dormitorio de servicio con baño y pre-instalación para lavadora/ secadora
- Vista al lago
- Two bedroom apartment of 170m<sup>2</sup> (1,829.86Ft<sup>2</sup>)
- Master bedroom with walk-in closet and bath integrated
- Secondary room with walk-in closet and bathroom
- Living-dining room
- Kitchen with breakfast counter
- Balcony
- Guest bathroom
- Maid's quarters with bathroom and pre-installation for washer/ dryer
- Lake view





APARTAMENTO TIPO C: TRES HABITACIONES / APARTMENT TYPE C: THREE BEDROOMS

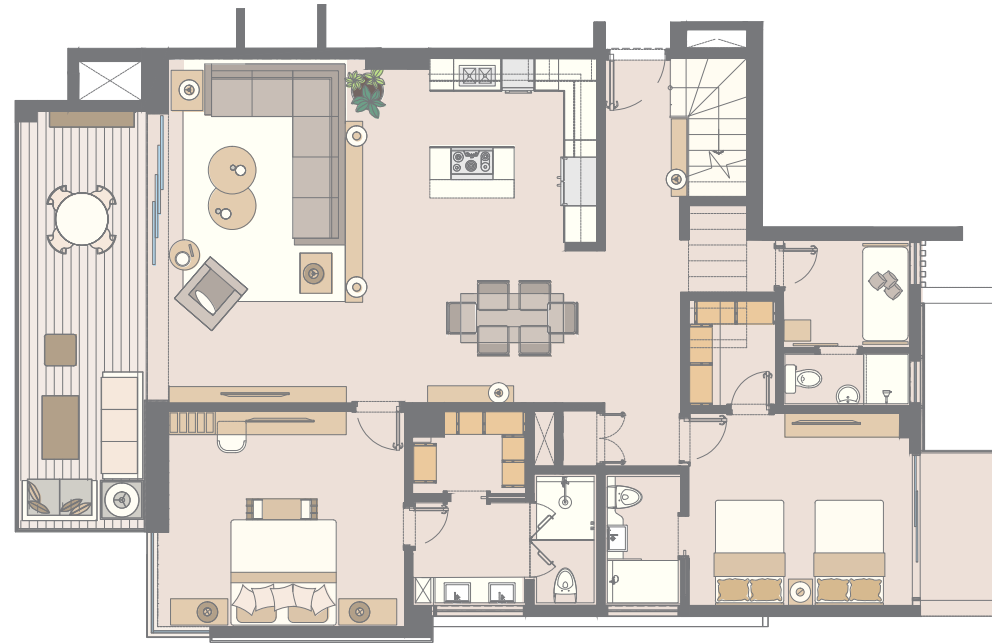


NO.	TIPO TYPE	NIVEL LEVEL
EDIFICIO / BUILDING: 1		
163	C	6
153	C	5
143	C	4
133	C	3
123	C	2
113	C	1
EDIFICIO / BUILDING: 2		
213	C	1
EDIFICIO / BUILDING: 3		
334	C	3
324	C	2

CARACTERISTICAS DEL APARTAMENTO / APARTMENT FEATURES

- Apartamento de tres habitaciones de 223m<sup>2</sup> (2,400.35Ft<sup>2</sup>)
- Habitación principal con walk-in clóset y baño
- 2 habitaciones secundarias con walk-in clóset y baño
- Sala-comedor
- Cocina con desayunador
- Baño de visita
- Balcón
- Dormitorio de servicio con baño y pre-instalación para lavadora/ secadora
- Vista al lago
- Three bedroom apartment of 223m<sup>2</sup> (2,400.35Ft<sup>2</sup>)
- Master bedroom with walk-in clóset and bath
- 2 secondary rooms with walk-in clóset and bathroom
- Living-dining room
- Kitchen with breakfast counter
- Guest bathroom
- Balcony
- Maid's quarters with bathroom and pre-installation for washer/ dryer
- Lake view

APARTAMENTO TIPO D: PENTHOUSE DE DOS HABITACIONES + TERRAZA  
 APARTMENT TYPE D: TWO BEDROOMS PENTHOUSE + TERRACE

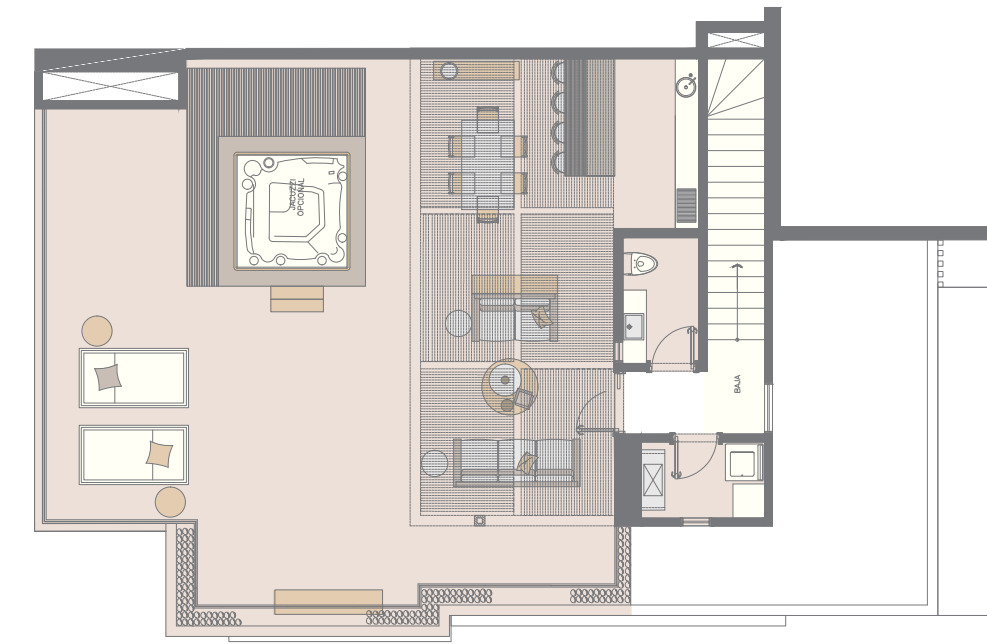


NO.	TIPO TYPE	NIVEL LEVEL
EDIFICIO / BUILDING: 2		
261	D	6
EDIFICIO / BUILDING: 3		
361	D	6

CARACTERISTICAS DEL APARTAMENTO / APARTMENT FEATURES

- Penthouse de dos habitaciones de 288m<sup>2</sup> (3,100.00Ft<sup>2</sup>)
- Habitación principal con walk-in clóset y baño integrados
- Habitación secundaria con walk-in clóset y baño
- Sala-comedor
- Cocina con desayunador
- Balcón
- Dormitorio de servicio con baño y pre-instalación para lavadora/ secadora
- Vista al lago
- *Two bedroom penthouse of 288m<sup>2</sup> (3,100.00Ft<sup>2</sup>)*
- *Master bedroom with walk-in closet and bathroom*
- *Secondary room with walk-in closet and bathroom*
- *Living-dining room*
- *Kitchen with breakfast counter*
- *Balcony*
- *Maid's quarters with bathroom and pre-installation for washer/ dryer*
- *Lake view*

TERRAZA SEGUNDO NIVEL APARTAMENTO TIPO D  
 APARTMENT TYPE D SECOND LEVEL TERRACE



CARACTERISTICAS DEL APARTAMENTO / APARTMENT FEATURES

- Escalera
- Terraza en segundo nivel
- Baño de visita
- Pre-instalación para Jacuzzi
- *Stairs*
- *Terrace on the second floor*
- *Guest bathroom*
- *Pre-installation for Jacuzzi*

APARTAMENTO TIPO E: PENTHOUSE DE TRES HABITACIONES + TERRAZA  
 APARTMENT TYPE E: THREE BEDROOMS PENTHOUSE + TERRACE

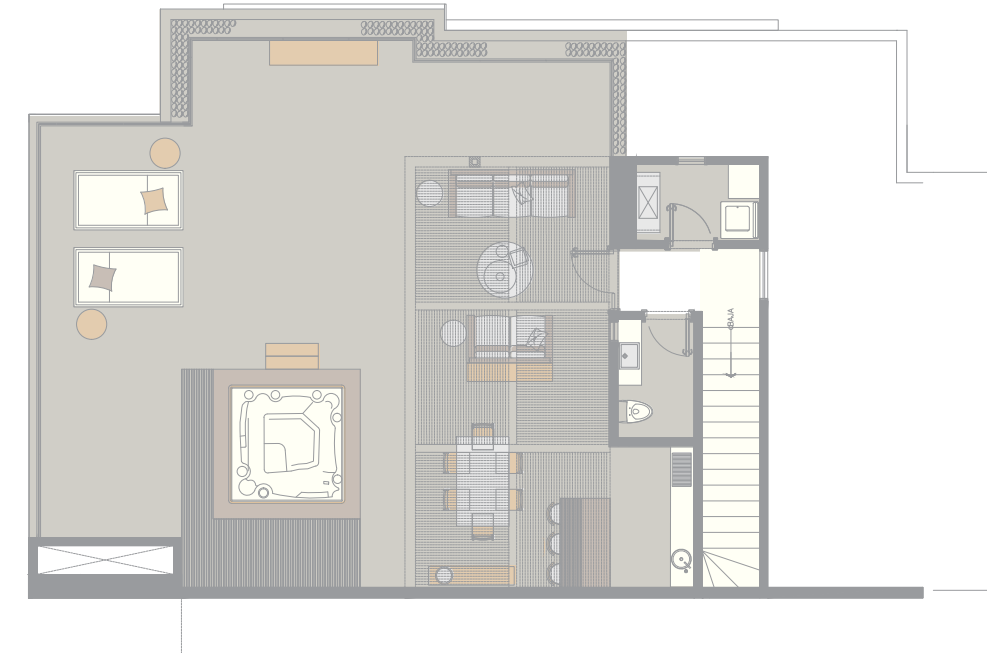


NO.	TIPO TYPE	NIVEL LEVEL
EDIFICIO / BUILDING: 3		
364	E	6

CARACTERISTICAS DEL APARTAMENTO / APARTMENT FEATURES

- Penthouse de tres habitaciones de 337m<sup>2</sup> (3,627.43Ft<sup>2</sup>)
- Habitación principal con walk-in clóset y baño
- 2 habitaciones secundarias con walk-in clóset y baño
- Sala-comedor
- Cocina con desayunador
- Balcón
- Dormitorio de servicio con baño y pre-instalación para lavadora/ secadora
- Vistas al lago
- *Three bedrooms penthouse of 337m<sup>2</sup> (3,627.43Ft<sup>2</sup>)*
- *Master bedroom with walk-in closet and bath*
- *2 secondary rooms with walk-in closet and bathroom*
- *Living-dining room*
- *Kitchen with breakfast counter*
- *Balcony*
- *Maid's quarters with bathroom and pre-installation for washer/ dryer*
- *Lake views*

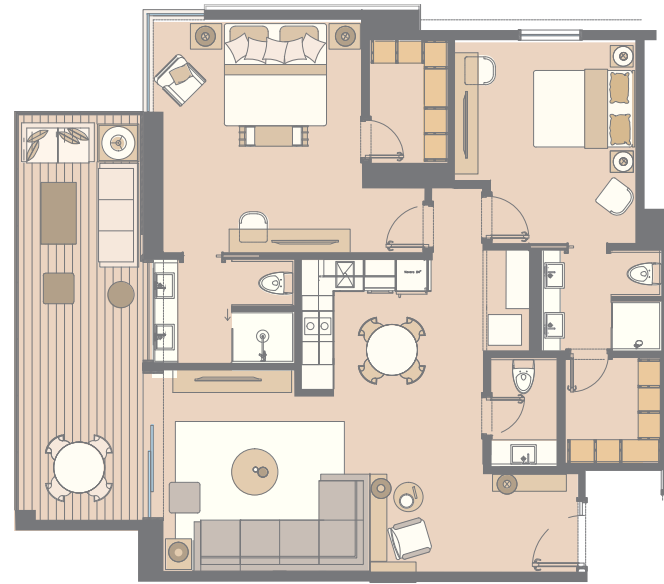
TERRAZA SEGUNDO NIVEL APARTAMENTO TIPO E  
 APARTMENT TYPE E SECOND LEVEL TERRACE



CARACTERISTICAS DEL APARTAMENTO / APARTMENT FEATURES

- Escalera
- Terraza en segundo nivel
- Baño de visita
- Pre-instalación para Jacuzzi
- *Stairs*
- *Terrace on the second floor*
- *Guest bathroom*
- *Pre-installation for Jacuzzi*

APARTAMENTO TIPO G: DOS HABITACIONES / APARTMENT TYPE G: TWO BEDROOMS

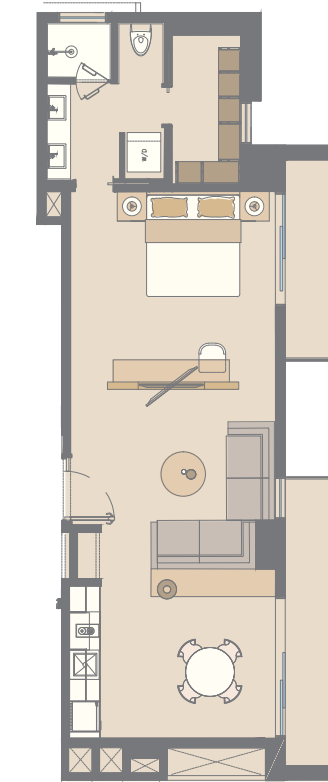


NO.	TIPO TYPE	NIVEL LEVEL
EDIFICIO / BUILDING: 3		
344	G	4
354	G	5

CARACTERISTICAS DEL APARTAMENTO / APARTMENT FEATURES

- Apartamento de dos habitaciones de 126m<sup>2</sup> (1,356.25Ft<sup>2</sup>)
- Habitación principal con walk-in clóset y baño
- Habitación secundaria con walk-in clóset y baño
- Sala-comedor
- Cocina
- Balcón
- Baño de visita
- Pre-instalación para lavadora/secadora
- Vista al lago
- *Two bedrooms apartment of 126m<sup>2</sup> (1,356.25Ft<sup>2</sup>)*
- *Master bedroom with walk-in clóset and bathroom*
- *Secondary room with walk-in clóset and bathroom*
- *Living-dining room*
- *Kitchen*
- *Balcony*
- *Guest bathroom*
- *Pre-installation for washer/dryer*
- *Lake view*

APARTAMENTO TIPO H: SUITE / APARTMENT TYPE H: SUITE



NO.	TIPO TYPE	NIVEL LEVEL
EDIFICIO / BUILDING: 3		
345	H	4
355	H	5

CARACTERISTICAS DEL APARTAMENTO / APARTMENT FEATURES

- Apartamento de una habitación de 83m<sup>2</sup> (893.40Ft<sup>2</sup>)
- Sala-comedor
- Vitchenette
- Area de lavado
- Habitación principal con clóset y baño
- Balcón
- *One bedroom apartment of 83m<sup>2</sup> (893.40Ft<sup>2</sup>)*
- *Living-dining room*
- *Kitchenette*
- *Laundry area*
- *Master bedroom with closet and bathroom*
- *Balcony*

APARTAMENTO TIPO I: DOS HABITACIONES / APARTMENT TYPE I: TWO BEDROOMS

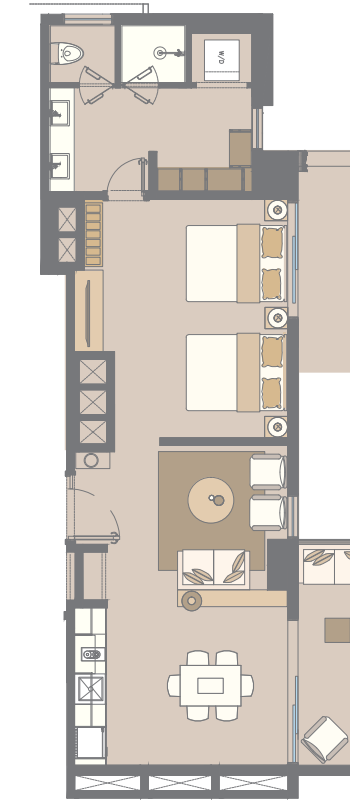


NO.	TIPO TYPE	NIVEL LEVEL
EDIFICIO / BUILDING: 2		
263	I	6
253	I	5
243	I	4
233	I	3
223	I	2

CARACTERISTICAS DEL APARTAMENTO / APARTMENT FEATURES

- Apartamento de dos habitaciones de 125m<sup>2</sup> (1,345.49Ft<sup>2</sup>)
- Sala-comedor
- Cocina
- Balcón
- Pre-instalación para lavadora/secadora
- Habitación principal con clóset y baño
- Vista al lago
- *Two bedroom apartment of 125m<sup>2</sup> (1,345.49Ft<sup>2</sup>)*
- *Living-dining room*
- *Kitchen*
- *Balcony*
- *Pre-installation for washer/dryer*
- *Master bedroom with closet and bathroom*
- *Lake view*

APARTAMENTO TIPO J: SUITE / APARTMENT TYPE J: SUITE



NO.	TIPO TYPE	NIVEL LEVEL
EDIFICIO / BUILDING: 2		
264	J	6
254	J	5
244	J	4
234	J	3
224	J	2

CARACTERISTICAS DEL APARTAMENTO / APARTMENT FEATURES

- Apartamento de una habitación de 81m<sup>2</sup> (871.88Ft<sup>2</sup>)
- Sala-comedor
- Kitchenette
- Pre-instalación para lavadora/secadora
- Habitación principal con clóset y baño
- *One bedroom apartment of 81m<sup>2</sup> (871.88Ft<sup>2</sup>)*
- *Living-dining room*
- *Kitchenette*
- *Pre-installation for washer/dryer*
- *Master bedroom with closet and bathroom*



NO.	TIPO TYPE	NIVEL LEVEL	HAB. ROOMS	HAB. SERVICIO MAIDS ROOM	BAÑOS BATHROOMS	CONSTR. M <sup>2</sup>	CONSTR. FT <sup>2</sup>	JARDÍN   GARDEN M <sup>2</sup>	JARDÍN   GARDEN FT <sup>2</sup>	TOTAL M <sup>2</sup>	TOTAL FT <sup>2</sup>
111	B	1	2	1	2.5	170.00	1,829.86	45.00	484.38	215.00	2,314.24
112	A	1	1+		2	103.00	1,108.68	31.00	333.68	134.00	1,442.36
113	C	1	3	1	3.5	223.00	2,400.35	45.00	484.38	246.00	2,647.92
121	B	2	2	1	2.5	171.00	1,840.63			171.00	1,840.63
122	A	2	1+		2	103.00	1,108.68			103.00	1,108.68
123	C	2	3	1	3.5	216.00	2,325.00			216.00	2,325.00
131	B	3	2	1	2.5	171.00	1,840.63			171.00	1,840.63
132	A	3	1+		2	103.00	1,108.68			103.00	1,108.68
133	C	3	3	1	3.5	211.00	2,271.18			211.00	2,271.18
141	B	4	2	1	2.5	171.00	1,840.63			171.00	1,840.63
142	A	4	1+	1	2	103.00	1,108.68			103.00	1,108.68
143	C	4	3	1	3.5	211.00	2,271.18			211.00	2,271.18
151	B	5	2	1	2.5	171.00	1,840.63			171.00	1,840.63
152	A	5	1+		2	103.00	1,108.68			103.00	1,108.68
153	C	5	3	1	3.5	204.00	2,195.84			204.00	2,195.84
161	B	6	2	1	2.5	169.00	1,819.10			169.00	1,819.10
163	C	6	3	1	3.5	198.00	2,131.25			198.00	2,131.25

UBICACION | LOCATION



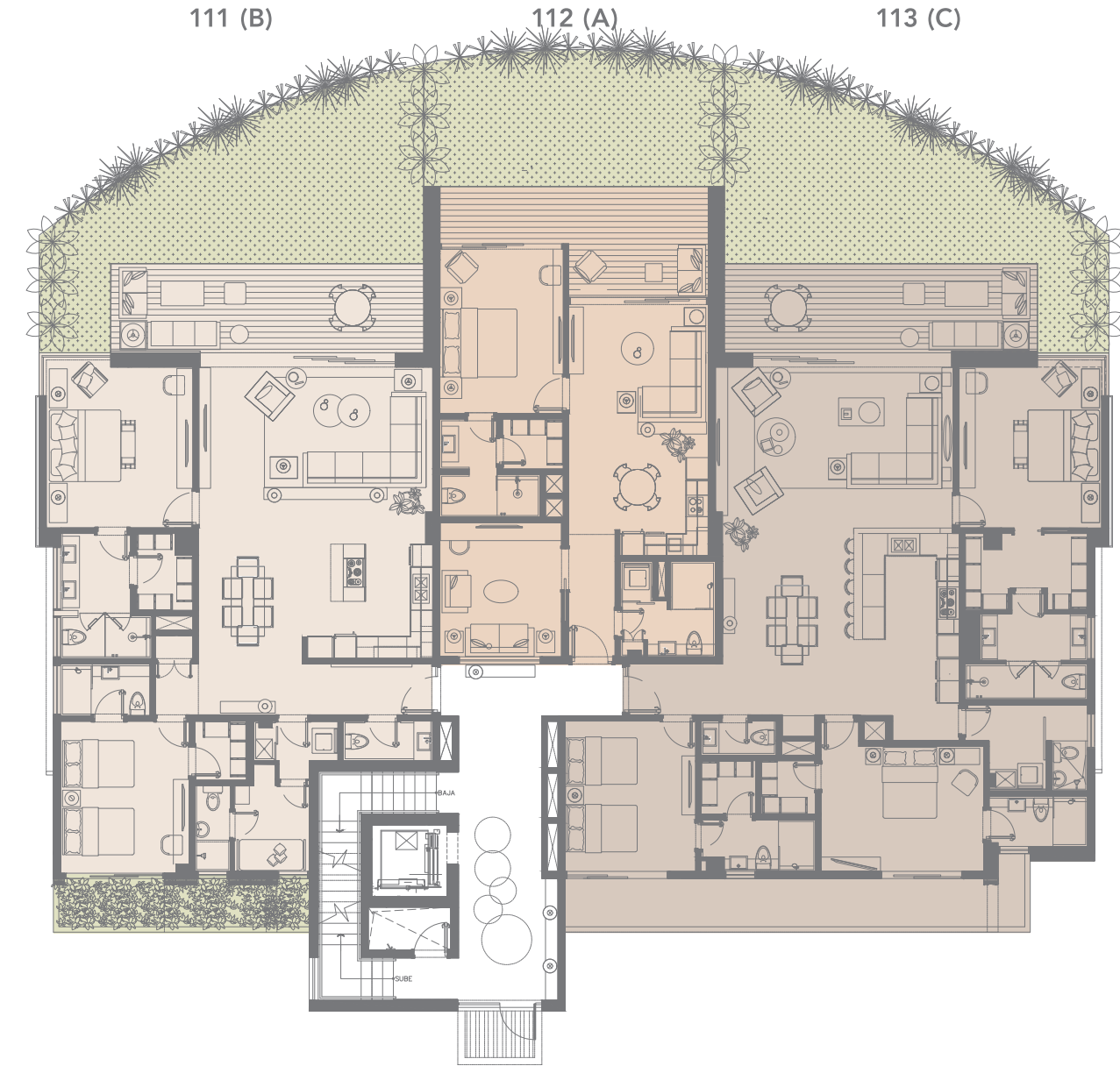
161 (B)		163 (C)
151 (B)	152 (A)	153 (C)
141 (B)	142 (A)	143 (C)
131 (B)	132 (A)	133 (C)
121 (B)	122 (A)	123 (C)
111 (B)	112 (A)	113 (C)



EDIFICIO # 1 | BUILDING #1

6 NIVELES | 6 LEVELS

NIVEL 1 | LEVEL 1



NO.	TIPO TYPE	NIVEL LEVEL	HAB. ROOMS	HAB. SERVICIO MAIDS ROOM	BAÑOS BATHROOMS	CONSTR. M <sup>2</sup>	CONSTR. FT <sup>2</sup>	JARDÍN   GARDEN M <sup>2</sup>	JARDÍN   GARDEN FT <sup>2</sup>	TOTAL M <sup>2</sup>	TOTAL FT <sup>2</sup>
111	B	1	2	1	2.5	170.00	1,829.86	45.00	484.38	215.00	2,314.24
112	A	1	1+		2	103.00	1,108.68	31.00	333.68	134.00	1,442.36
113	C	1	3	1	3.5	223.00	2,400.35	45.00	484.38	246.00	2,647.92

UBICACION | LOCATION



161 (B)		163 (C)
151 (B)	152 (A)	153 (C)
141 (B)	142 (A)	143 (C)
131 (B)	132 (A)	133 (C)
121 (B)	122 (A)	123 (C)
111 (B)	112 (A)	113 (C)



EDIFICIO # 1 | BUILDING #1

6 NIVELES | 6 LEVELS

NIVEL 2 | LEVEL 2

121 (B)

122 (A)

123 (C)



NO.	TIPO TYPE	NIVEL LEVEL	HAB. ROOMS	HAB. SERVICIO MAIDS ROOM	BAÑOS BATHROOMS	CONSTR. M <sup>2</sup>	CONSTR. FT <sup>2</sup>	JARDÍN   GARDEN M <sup>2</sup>	JARDÍN   GARDEN FT <sup>2</sup>	TOTAL M <sup>2</sup>	TOTAL FT <sup>2</sup>
121	B	2	2	1	2.5	171.00	1,840.63			171.00	1,840.63
122	A	2	1+		2	103.00	1,108.68			103.00	1,108.68
123	C	2	3	1	3.5	216.00	2,325.00			216.00	2,325.00



UBICACION | LOCATION



161 (B)		163 (C)
151 (B)	152 (A)	153 (C)
141 (B)	142 (A)	143 (C)
131 (B)	132 (A)	133 (C)
121 (B)	122 (A)	123 (C)
111 (B)	112 (A)	113 (C)



EDIFICIO # 1 | BUILDING #1

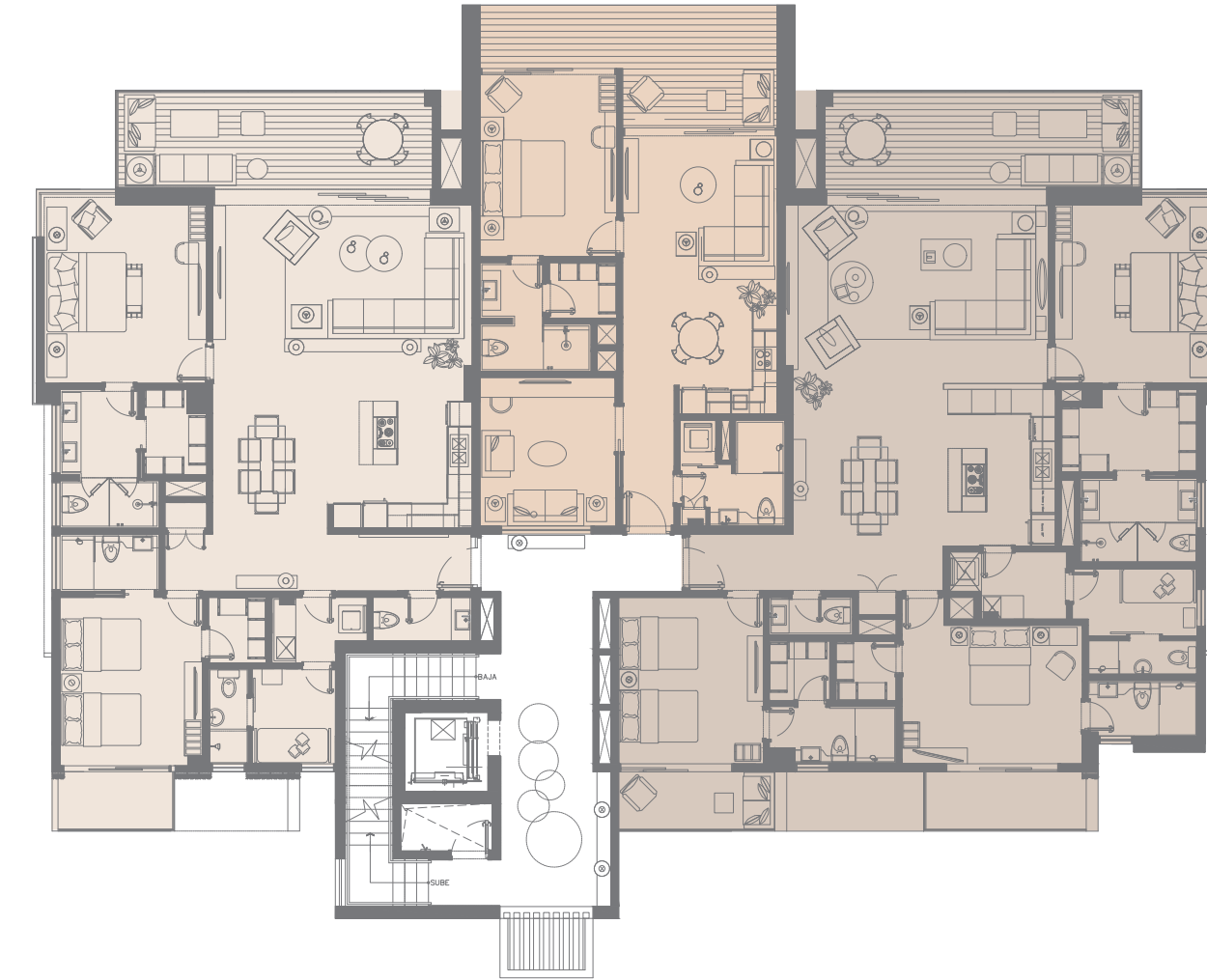
6 NIVELES | 6 LEVELS

NIVEL 3 | LEVEL 3

131 (B)

132 (A)

133 (C)



NO.	TIPO TYPE	NIVEL LEVEL	HAB. ROOMS	HAB. SERVICIO MAIDS ROOM	BAÑOS BATHROOMS	CONSTR. M <sup>2</sup>	CONSTR. FT <sup>2</sup>	JARDÍN   GARDEN M <sup>2</sup>	JARDÍN   GARDEN FT <sup>2</sup>	TOTAL M <sup>2</sup>	TOTAL FT <sup>2</sup>
131	B	3	2	1	2.5	171.00	1,840.63			171.00	1,840.63
132	A	3	1+		2	103.00	1,108.68			103.00	1,108.68
133	C	3	3	1	3.5	211.00	2,271.18			211.00	2,271.18

UBICACION | LOCATION



161 (B)		163 (C)
151 (B)	152 (A)	153 (C)
141 (B)	142 (A)	143 (C)
131 (B)	132 (A)	133 (C)
121 (B)	122 (A)	123 (C)
111 (B)	112 (A)	113 (C)



EDIFICIO # 1 | BUILDING #1

6 NIVELES | 6 LEVELS

NIVEL 4 | LEVEL 4

141 (B)

142 (A)

143 (C)



NO.	TIPO TYPE	NIVEL LEVEL	HAB. ROOMS	HAB. SERVICIO MAIDS ROOM	BAÑOS BATHROOMS	CONSTR. M <sup>2</sup>	CONSTR. FT <sup>2</sup>	JARDÍN   GARDEN M <sup>2</sup>	JARDÍN   GARDEN FT <sup>2</sup>	TOTAL M <sup>2</sup>	TOTAL FT <sup>2</sup>
141	B	4	2	1	2.5	171.00	1,840.63			171.00	1,840.63
142	A	4	1+	1	2	103.00	1,108.68			103.00	1,108.68
143	C	4	3	1	3.5	211.00	2,271.18			211.00	2,271.18

UBICACION | LOCATION



161 (B)		163 (C)
151 (B)	152 (A)	153 (C)
141 (B)	142 (A)	143 (C)
131 (B)	132 (A)	133 (C)
121 (B)	122 (A)	123 (C)
111 (B)	112 (A)	113 (C)



EDIFICIO # 1 | BUILDING #1

6 NIVELES | 6 LEVELS

NIVEL 5 | LEVEL 5

151 (B)

152 (A)

153 (C)



NO.	TIPO TYPE	NIVEL LEVEL	HAB. ROOMS	HAB. SERVICIO MAIDS ROOM	BAÑOS BATHROOMS	CONSTR. M <sup>2</sup>	CONSTR. FT <sup>2</sup>	JARDÍN   GARDEN M <sup>2</sup>	JARDÍN   GARDEN FT <sup>2</sup>	TOTAL M <sup>2</sup>	TOTAL FT <sup>2</sup>
151	B	5	2	1	2.5	171.00	1,840.63			171.00	1,840.63
152	A	5	1+		2	103.00	1,108.68			103.00	1,108.68
153	C	5	3	1	3.5	204.00	2,195.84			204.00	2,195.84

UBICACION | LOCATION



161 (B)		163 (C)
151 (B)	152 (A)	153 (C)
141 (B)	142 (A)	143 (C)
131 (B)	132 (A)	133 (C)
121 (B)	122 (A)	123 (C)
111 (B)	112 (A)	113 (C)



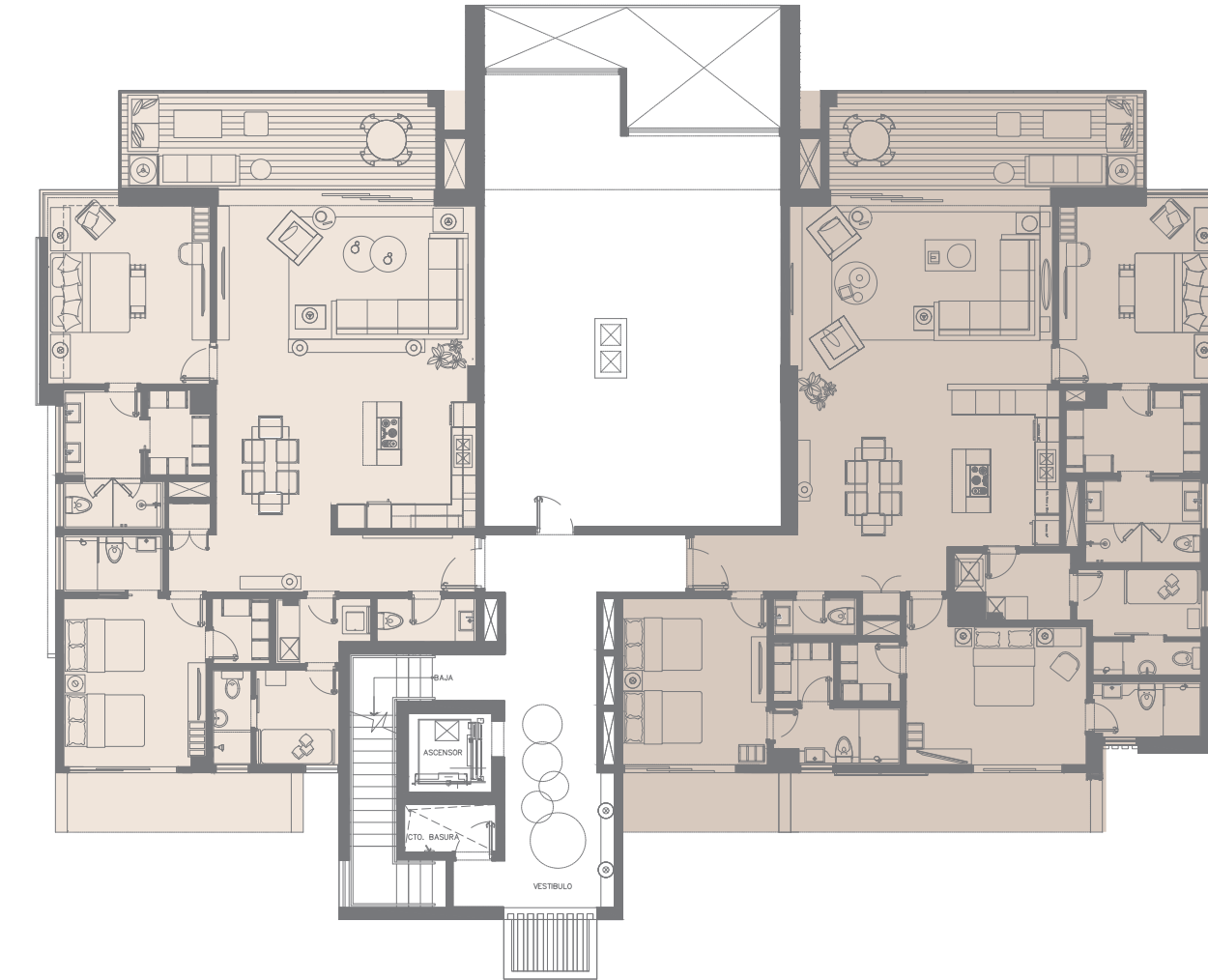
EDIFICIO # 1 | BUILDING #1

6 NIVELES | 6 LEVELS

NIVEL 6 | LEVEL 6

161 (B)

163 (C)



NO.	TIPO TYPE	NIVEL LEVEL	HAB. ROOMS	HAB. SERVICIO MAIDS ROOM	BAÑOS BATHROOMS	CONSTR. M <sup>2</sup>	CONSTR. FT <sup>2</sup>	JARDÍN   GARDEN M <sup>2</sup>	JARDÍN   GARDEN FT <sup>2</sup>	TOTAL M <sup>2</sup>	TOTAL FT <sup>2</sup>
161	B	6	2	1	2.5	169.00	1,819.10			169.00	1,819.10
163	C	6	3	1	3.5	198.00	2,131.25			198.00	2,131.25



EDIFICIO # 2 | BUILDING # 2

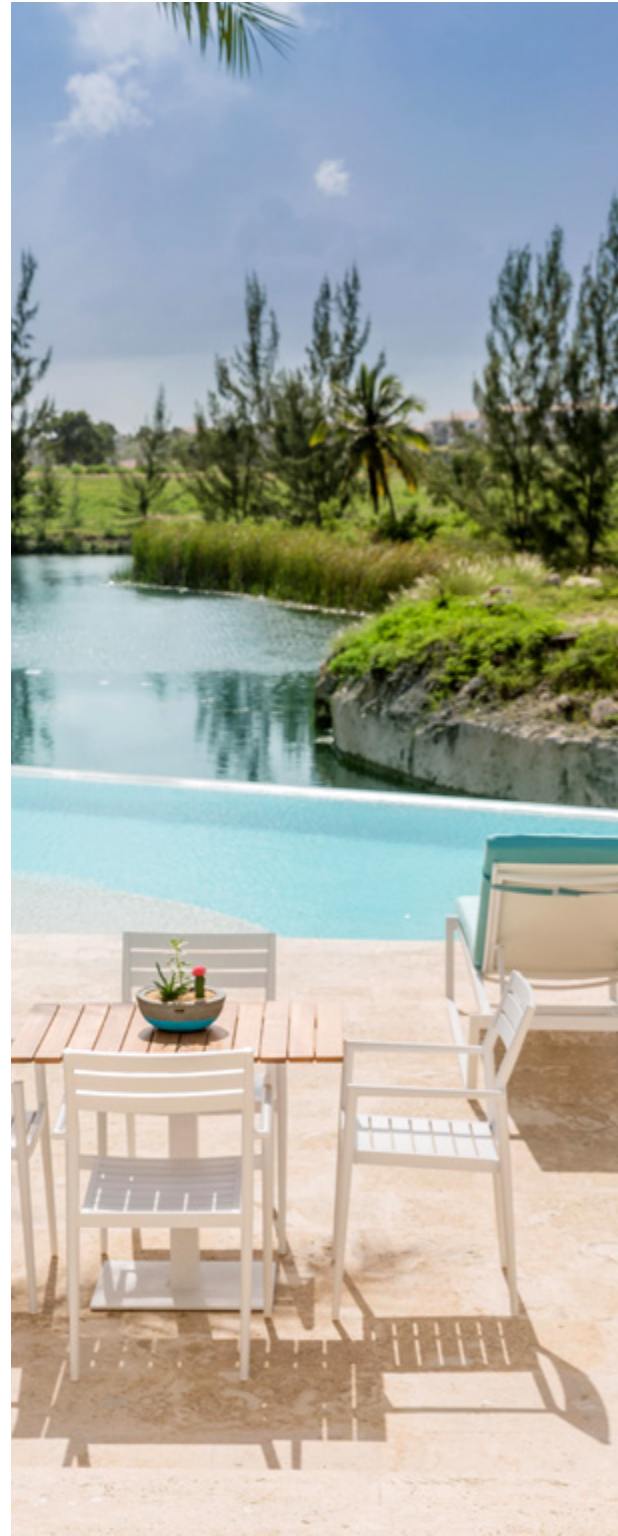
6 NIVELES | 6 LEVELS

NO.	TIPO TYPE	NIVEL LEVEL	HAB. ROOMS	HAB. SERVICIO MAIDS ROOM	BAÑOS BATHROOMS	CONSTR. M <sup>2</sup>	CONSTR. FT <sup>2</sup>	JARDÍN   GARDEN M <sup>2</sup>	JARDÍN   GARDEN FT <sup>2</sup>	TERRAZA   TERRACE M <sup>2</sup>	TERRAZA   TERRACE FT <sup>2</sup>	TOTAL M <sup>2</sup>	TOTAL FT <sup>2</sup>
211	B	1	2	1	2.5	170.00	1,829.86	45.00	484.38			215.00	2,314.24
212	A	1	1+		2	103.00	1,108.68	31.00	333.68			134.00	1,442.36
213	C	1	3	1	3.5	201.00	2,163.54	45.00	484.38			246.00	2,647.92
221	B	2	2	1	2.5	171.00	1,840.63					171.00	1,840.63
222	A	2	1+		2	103.00	1,108.68					103.00	1,108.68
223	I	2	2		2	125.00	1,345.49					125.00	1,345.49
224	J	2	1		1	86.00	925.70					86.00	925.70
231	B	3	2	1	2.5	171.00	1,840.63					171.00	1,840.63
232	A	3	1+		2	103.00	1,108.68					103.00	1,108.68
233	I	3	2		2	125.00	1,345.49					125.00	1,345.49
234	J	3	1		1	81.00	871.88					81.00	871.88
241	B	4	2	1	2.5	171.00	1,840.63					171.00	1,840.63
242	A	4	1+		2	103.00	1,108.68					103.00	1,108.68
243	I	4	2		2	125.00	1,345.49					125.00	1,345.49
244	J	4	1		1	81.00	871.88					81.00	871.88
251	B	5	2	1	2.5	171.00	1,840.63					171.00	1,840.63
252	A	5	1+		2	103.00	1,108.68					103.00	1,108.68
253	I	5	2		2	125.00	1,345.49					125.00	1,345.49
254	J	5	1		1	81.00	871.88					81.00	871.88
261	D	6	2	1	2.5	171.00	1,840.63			117.00	1,259.38	288.00	3,100.00
262	A	6	1+		2	103.00	1,108.68					103.00	1,108.68
263	I	6	2		2	125.00	1,345.49					125.00	1,345.49
264	J	6	1		1	81.00	871.88					81.00	871.88

UBICACION | LOCATION



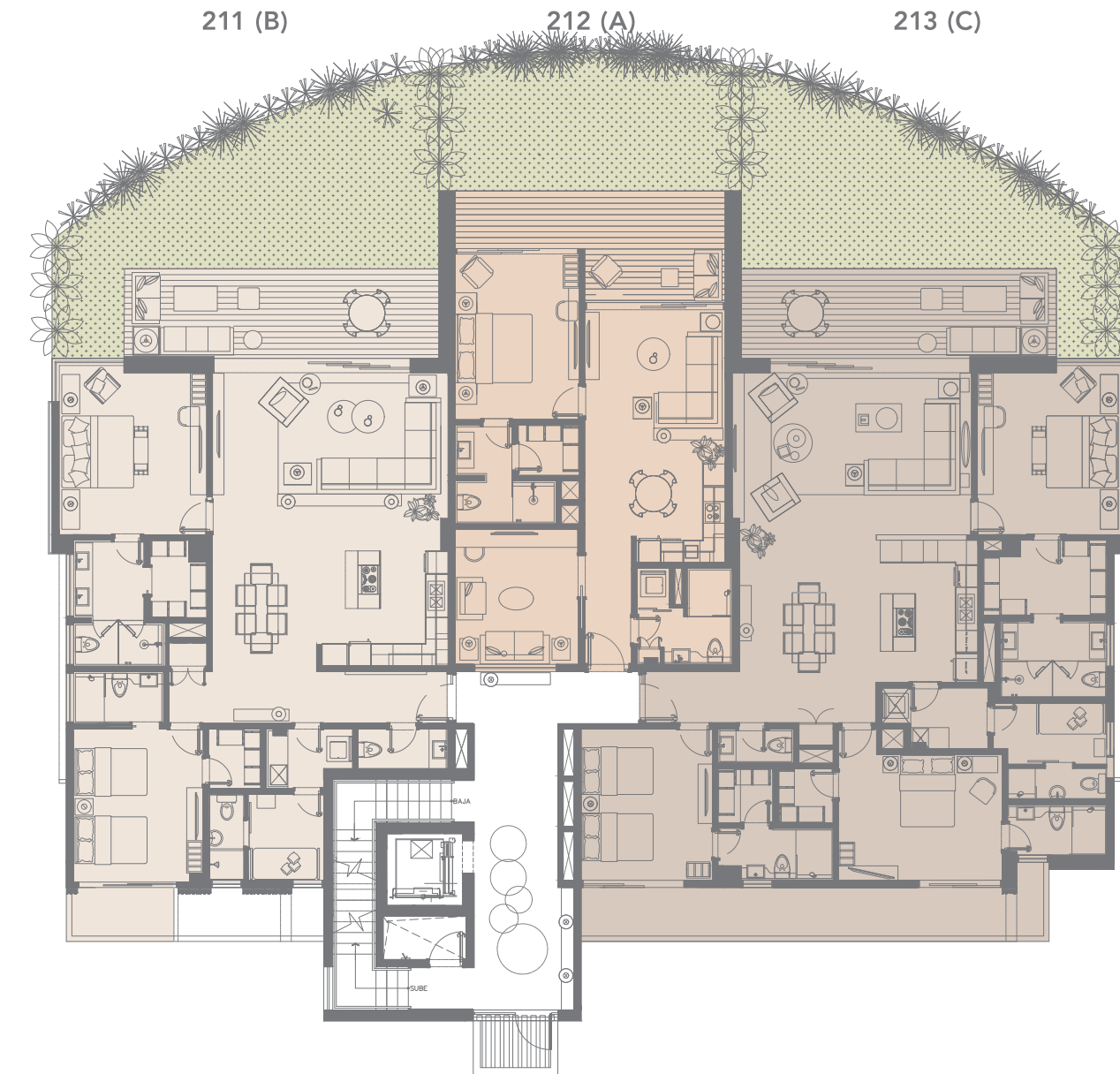
261 (D)	262 (A)	263 (I)	264 (J)
251 (B)	252 (A)	253 (I)	254 (J)
241 (B)	242 (A)	243 (I)	244 (J)
231 (B)	232 (A)	233 (I)	234 (J)
221 (B)	222 (A)	223 (I)	224 (J)
211 (B)	212 (A)	213 (C)	



EDIFICIO # 2 | BUILDING # 2

6 NIVELES | 6 LEVELS

NIVEL 2 | LEVEL 2



NO.	TIPO TYPE	NIVEL LEVEL	HAB. ROOMS	HAB. SERVICIO MAIDS ROOM	BAÑOS BATHROOMS	CONSTR. M <sup>2</sup>	CONSTR. FT <sup>2</sup>	JARDÍN   GARDEN M <sup>2</sup>	JARDÍN   GARDEN FT <sup>2</sup>	TERRAZA   TERRACE M <sup>2</sup>	TERRAZA   TERRACE FT <sup>2</sup>	TOTAL M <sup>2</sup>	TOTAL FT <sup>2</sup>
211	B	1	2	1	2.5	170.00	1,829.86	45.00	484.38			215.00	2,314.24
212	A	1	1+		2	103.00	1,108.68	31.00	333.68			134.00	1,442.36
213	C	1	3	1	3.5	201.00	2,163.54	45.00	484.38			246.00	2,647.92

UBICACION | LOCATION



261 (D)	262 (A)	263 (I)	264 (J)
251 (B)	252 (A)	253 (I)	254 (J)
241 (B)	242 (A)	243 (I)	244 (J)
231 (B)	232 (A)	233 (I)	234 (J)
221 (B)	222 (A)	223 (I)	224 (J)
211 (B)	212 (A)	213 (C)	



EDIFICIO # 2 | BUILDING # 2

6 NIVELES | 6 LEVELS

NIVEL 2 | LEVEL 2

221 (B)

222 (A)

223 (I)

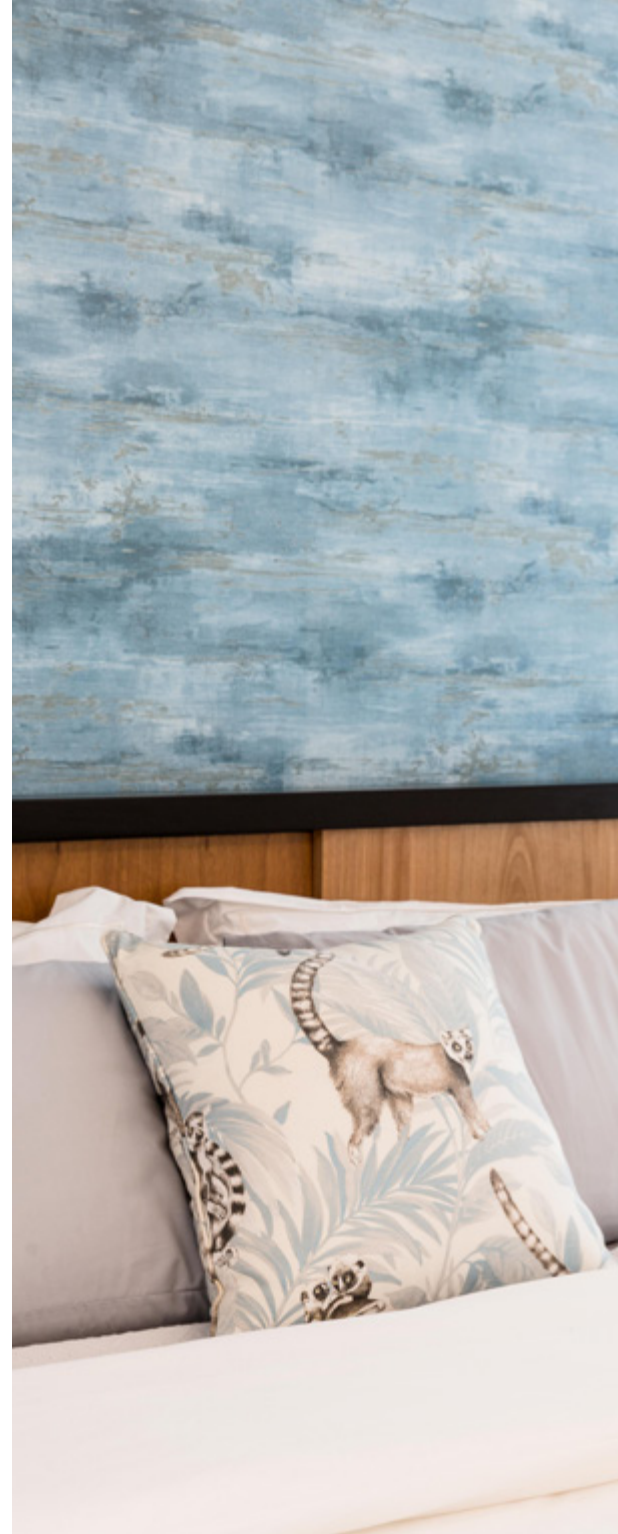


NO.	TIPO TYPE	NIVEL LEVEL	HAB. ROOMS	HAB. SERVICIO MAIDS ROOM	BAÑOS BATHROOMS	CONSTR. M <sup>2</sup>	CONSTR. FT <sup>2</sup>	JARDÍN   GARDEN M <sup>2</sup>	JARDÍN   GARDEN FT <sup>2</sup>	TERRAZA   TERRACE M <sup>2</sup>	TERRAZA   TERRACE FT <sup>2</sup>	TOTAL M <sup>2</sup>	TOTAL FT <sup>2</sup>
221	B	2	2	1	2.5	171.00	1,840.63					171.00	1,840.63
222	A	2	1+		2	103.00	1,108.68					103.00	1,108.68
223	I	2	2		2	125.00	1,345.49					125.00	1,345.49
224	J	2	1		1	86.00	925.70					86.00	925.70

UBICACION | LOCATION



261 (D)	262 (A)	263 (I)	264 (J)
251 (B)	252 (A)	253 (I)	254 (J)
241 (B)	242 (A)	243 (I)	244 (J)
231 (B)	232 (A)	233 (I)	234 (J)
221 (B)	222 (A)	223 (I)	224 (J)
211 (B)	212 (A)	213 (C)	



EDIFICIO # 2 | BUILDING # 2

6 NIVELES | 6 LEVELS

NIVEL 3 | LEVEL 3

231 (B)

232 (A)

233 (I)



NO.	TIPO TYPE	NIVEL LEVEL	HAB. ROOMS	HAB. SERVICIO MAIDS ROOM	BAÑOS BATHROOMS	CONSTR. M <sup>2</sup>	CONSTR. FT <sup>2</sup>	JARDÍN   GARDEN M <sup>2</sup>	JARDÍN   GARDEN FT <sup>2</sup>	TERRAZA   TERRACE M <sup>2</sup>	TERRAZA   TERRACE FT <sup>2</sup>	TOTAL M <sup>2</sup>	TOTAL FT <sup>2</sup>
231	B	3	2	1	2.5	171.00	1,840.63					171.00	1,840.63
232	A	3	1+		2	103.00	1,108.68					103.00	1,108.68
233	I	3	2		2	125.00	1,345.49					125.00	1,345.49
234	J	3	1		1	81.00	871.88					81.00	871.88



UBICACION | LOCATION



261 (D)	262 (A)	263 (I)	264 (J)
251 (B)	252 (A)	253 (I)	254 (J)
241 (B)	242 (A)	243 (I)	244 (J)
231 (B)	232 (A)	233 (I)	234 (J)
221 (B)	222 (A)	223 (I)	224 (J)
211 (B)	212 (A)	213 (C)	



EDIFICIO # 2 | BUILDING # 2

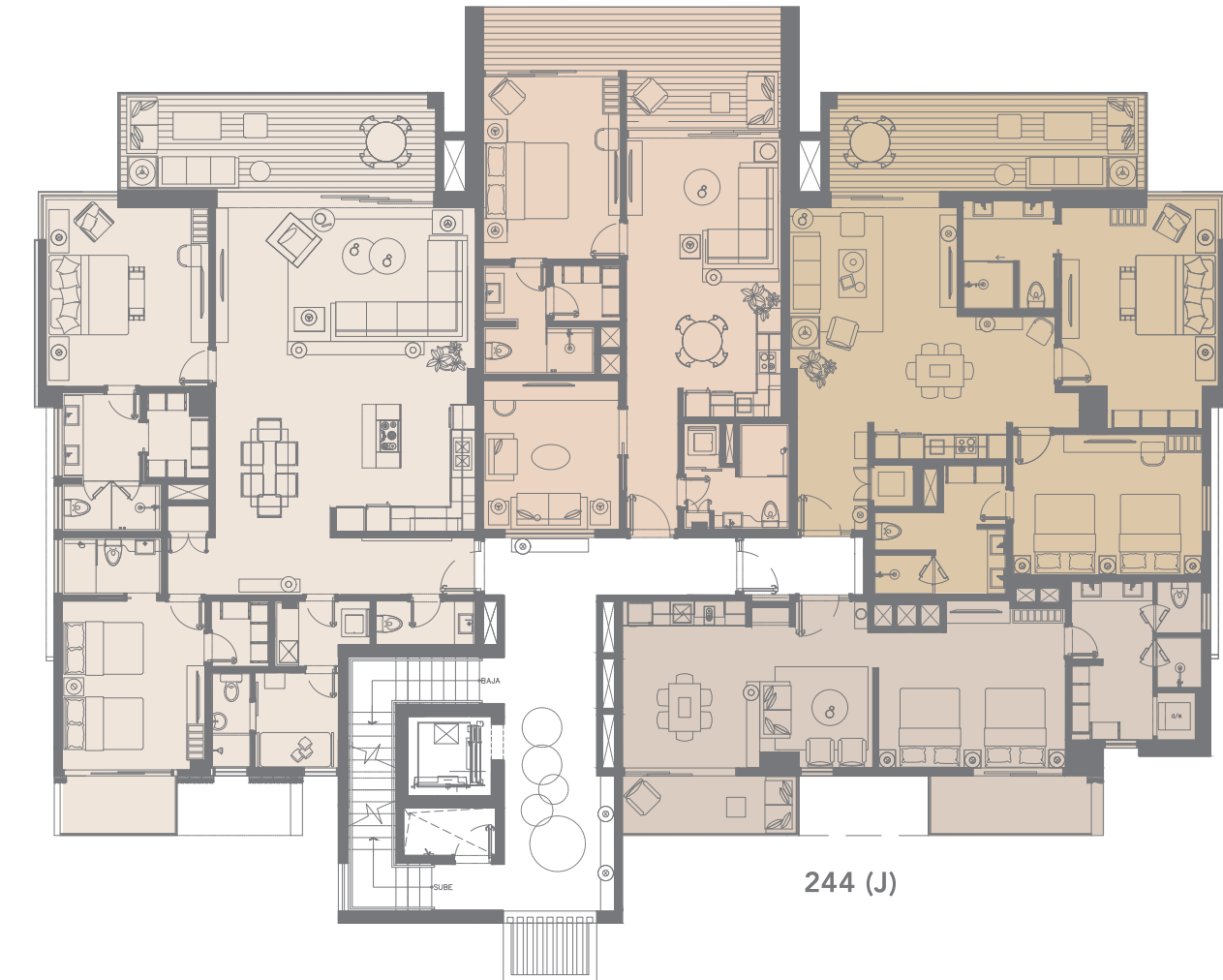
6 NIVELES | 6 LEVELS

NIVEL 4 | LEVEL 4

241 (B)

242 (A)

243 (I)



NO.	TIPO TYPE	NIVEL LEVEL	HAB. ROOMS	HAB. SERVICIO MAIDS ROOM	BAÑOS BATHROOMS	CONSTR. M <sup>2</sup>	CONSTR. FT <sup>2</sup>	JARDÍN   GARDEN M <sup>2</sup>	JARDÍN   GARDEN FT <sup>2</sup>	TERRAZA   TERRACE M <sup>2</sup>	TERRAZA   TERRACE FT <sup>2</sup>	TOTAL M <sup>2</sup>	TOTAL FT <sup>2</sup>
241	B	4	2	1	2.5	171.00	1,840.63					171.00	1,840.63
242	A	4	1+		2	103.00	1,108.68					103.00	1,108.68
243	I	4	2		2	125.00	1,345.49					125.00	1,345.49
244	J	4	1		1	81.00	871.88					81.00	871.88

UBICACION | LOCATION



261 (D)	262 (A)	263 (I)	264 (J)
251 (B)	252 (A)	253 (I)	254 (J)
241 (B)	242 (A)	243 (I)	244 (J)
231 (B)	232 (A)	233 (I)	234 (J)
221 (B)	222 (A)	223 (I)	224 (J)
211 (B)	212 (A)	213 (C)	



EDIFICIO # 2 | BUILDING # 2

6 NIVELES | 6 LEVELS

NIVEL 5 | LEVEL 5

251 (B)

252 (A)

253 (I)



NO.	TIPO TYPE	NIVEL LEVEL	HAB. ROOMS	HAB. SERVICIO MAIDS ROOM	BAÑOS BATHROOMS	CONSTR. M <sup>2</sup>	CONSTR. FT <sup>2</sup>	JARDÍN   GARDEN M <sup>2</sup>	JARDÍN   GARDEN FT <sup>2</sup>	TERRAZA   TERRACE M <sup>2</sup>	TERRAZA   TERRACE FT <sup>2</sup>	TOTAL M <sup>2</sup>	TOTAL FT <sup>2</sup>
251	B	5	2	1	2.5	171.00	1,840.63					171.00	1,840.63
252	A	5	1+		2	103.00	1,108.68					103.00	1,108.68
253	I	5	2		2	125.00	1,345.49					125.00	1,345.49
254	J	5	1		1	81.00	871.88					81.00	871.88

UBICACION | LOCATION



261 (D)	262 (A)	263 (I)	264 (J)
251 (B)	252 (A)	253 (I)	254 (J)
241 (B)	242 (A)	243 (I)	244 (J)
231 (B)	232 (A)	233 (I)	234 (J)
221 (B)	222 (A)	223 (I)	224 (J)
211 (B)	212 (A)	213 (C)	



EDIFICIO # 2 | BUILDING # 2

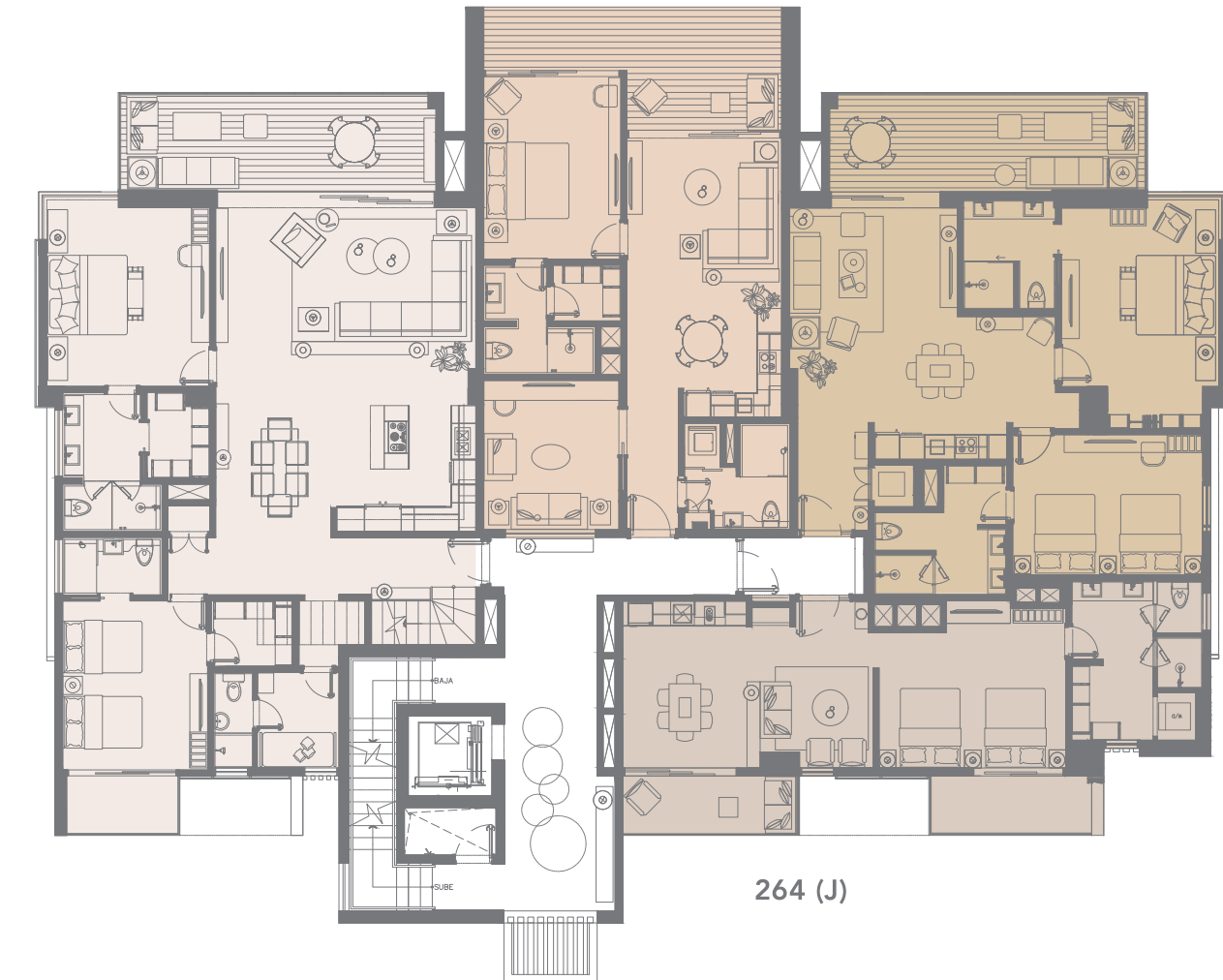
PH 261 (D)

6 NIVELES | 6 LEVELS

262 (A)

NIVEL 6 | LEVEL 6

263 (I)



NO.	TIPO TYPE	NIVEL LEVEL	HAB. ROOMS	HAB. SERVICIO MAIDS ROOM	BAÑOS BATHROOMS	CONSTR. M <sup>2</sup>	CONSTR. FT <sup>2</sup>	JARDÍN   GARDEN M <sup>2</sup>	JARDÍN   GARDEN FT <sup>2</sup>	TERRAZA   TERRACE M <sup>2</sup>	TERRAZA   TERRACE FT <sup>2</sup>	TOTAL M <sup>2</sup>	TOTAL FT <sup>2</sup>
261	D	6	2	1	2.5	171.00	1,840.63			117.00	1,259.38	288.00	3,100.00
262	A	6	1+		2	103.00	1,108.68					103.00	1,108.68
263	I	6	2		2	125.00	1,345.49					125.00	1,345.49
264	J	6	1		1	81.00	871.88					81.00	871.88



EDIFICIO # 2 | BUILDING # 2

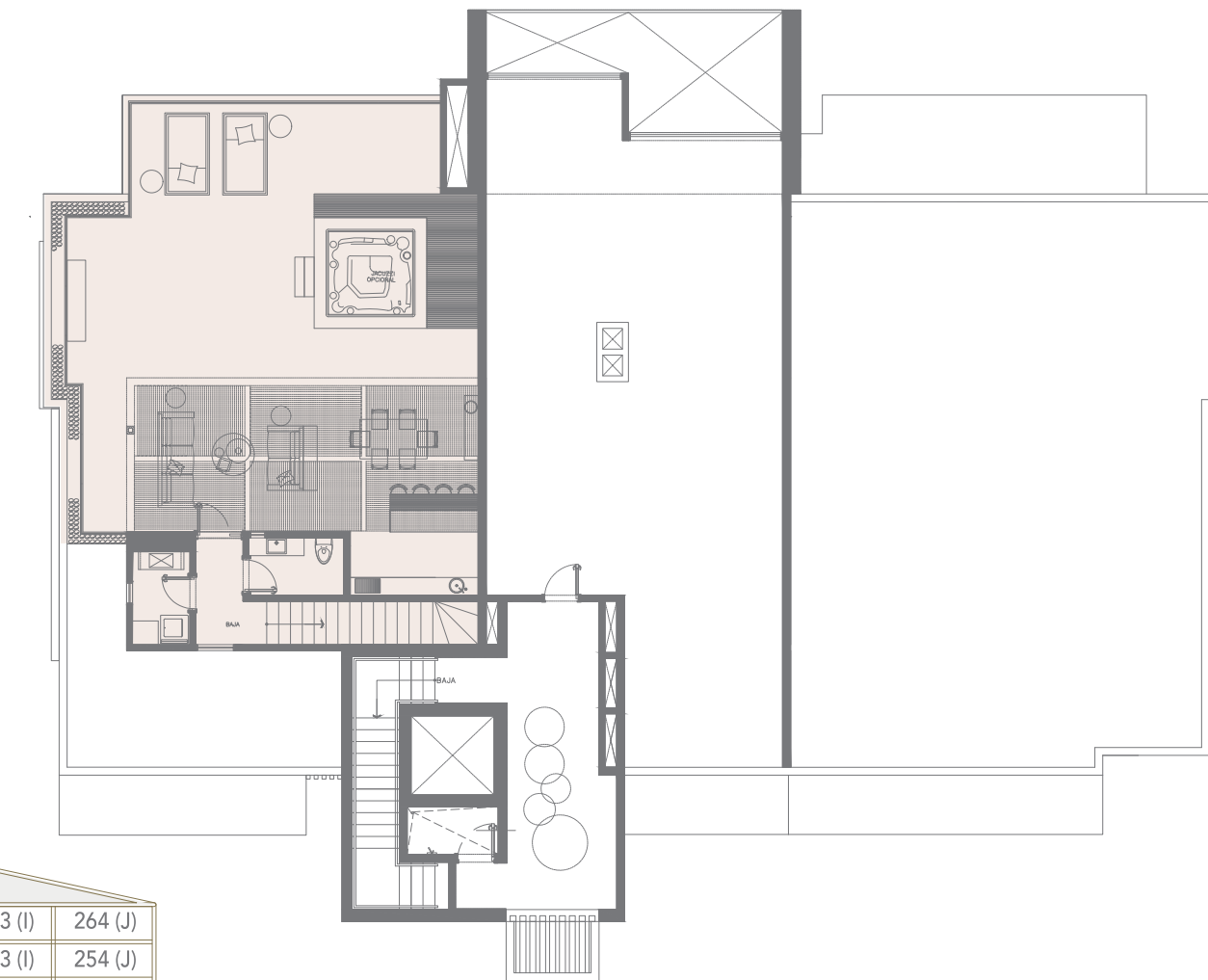
PH 261 (D)

6 NIVELES | 6 LEVELS

262 (A)

TERRAZA | TERRACE

263 (I)



261 (D)	262 (A)	263 (I)	264 (J)
251 (B)	252 (A)	253 (I)	254 (J)
241 (B)	242 (A)	243 (I)	244 (J)
231 (B)	232 (A)	233 (I)	234 (J)
221 (B)	222 (A)	223 (I)	224 (J)
211 (B)	212 (A)	213 (C)	



EDIFICIO # 3 | BUILDING # 3

6 NIVELES | 6 LEVELS

NO.	TIPO TYPE	NIVEL LEVEL	HAB. ROOMS	HAB. SERVICIO MAIDS ROOM	BAÑOS BATHROOMS	CONSTR. M <sup>2</sup>	CONSTR. FT <sup>2</sup>	JARDÍN   GARDEN M <sup>2</sup>	JARDÍN   GARDEN FT <sup>2</sup>	TERRAZA   TERRACE M <sup>2</sup>	TERRAZA   TERRACE FT <sup>2</sup>	TOTAL M <sup>2</sup>	TOTAL FT <sup>2</sup>
321	B	2	2	1	2.5	172.00	1,851.39					172.00	1,851.39
324	C	2	3	1	3.5	220.00	2,368.06					220.00	2,368.06
331	B	3	2	1	2.5	172.00	1,851.39					172.00	1,851.39
332	A	3	1+		2	104.00	1,119.45					104.00	1,119.45
333	A	3	1+		2	104.00	1,119.45					104.00	1,119.45
334	C	3	3	1	3.5	217.00	2,335.77					217.00	2,335.77
341	B	4	2	1	2.5	174.00	1,872.92					174.00	1,872.92
342	A	4	1+		2	104.00	1,119.45					104.00	1,119.45
343	A	4	1+		2	104.00	1,119.45					104.00	1,119.45
344	G	4	2		2.5	126.00	1,356.25					126.00	1,356.25
345	H	4	1		1	86.00	925.70					86.00	925.70
351	B	5	2	1	2.5	172.00	1,851.39					172.00	1,851.39
352	A	5	1+		2	104.00	1,119.45					104.00	1,119.45
353	A	5	1+		2	104.00	1,119.45					104.00	1,119.45
354	G	5	2		2.5	126.00	1,356.25					126.00	1,356.25
355	H	5	1		1	83.00	893.40					83.00	893.40
361	D	6	2	1	2.5	172.00	1,851.39			117.00	1,259.38	289.00	1,968.39
362	A	6	1+		2	104.00	1,119.45					104.00	1,119.45
363	A	6	1+		2	104.00	1,119.45					104.00	1,119.45
364	E	6	3	1	3.5	217	2,335.77			120.00	1,291.67	337.00	3,627.43

UBICACION | LOCATION



361 (D)	362 (A)	363 (A)	364 (E)
351(B)	352(A)	353(A)	354(G)
341 (B)	342 (A)	343 (A)	344 (G)
331 (B)	332 (A)	333 (A)	334 (C)
321 (B)			324 (C)
ÁREA SOCIAL   SOCIAL AREA			

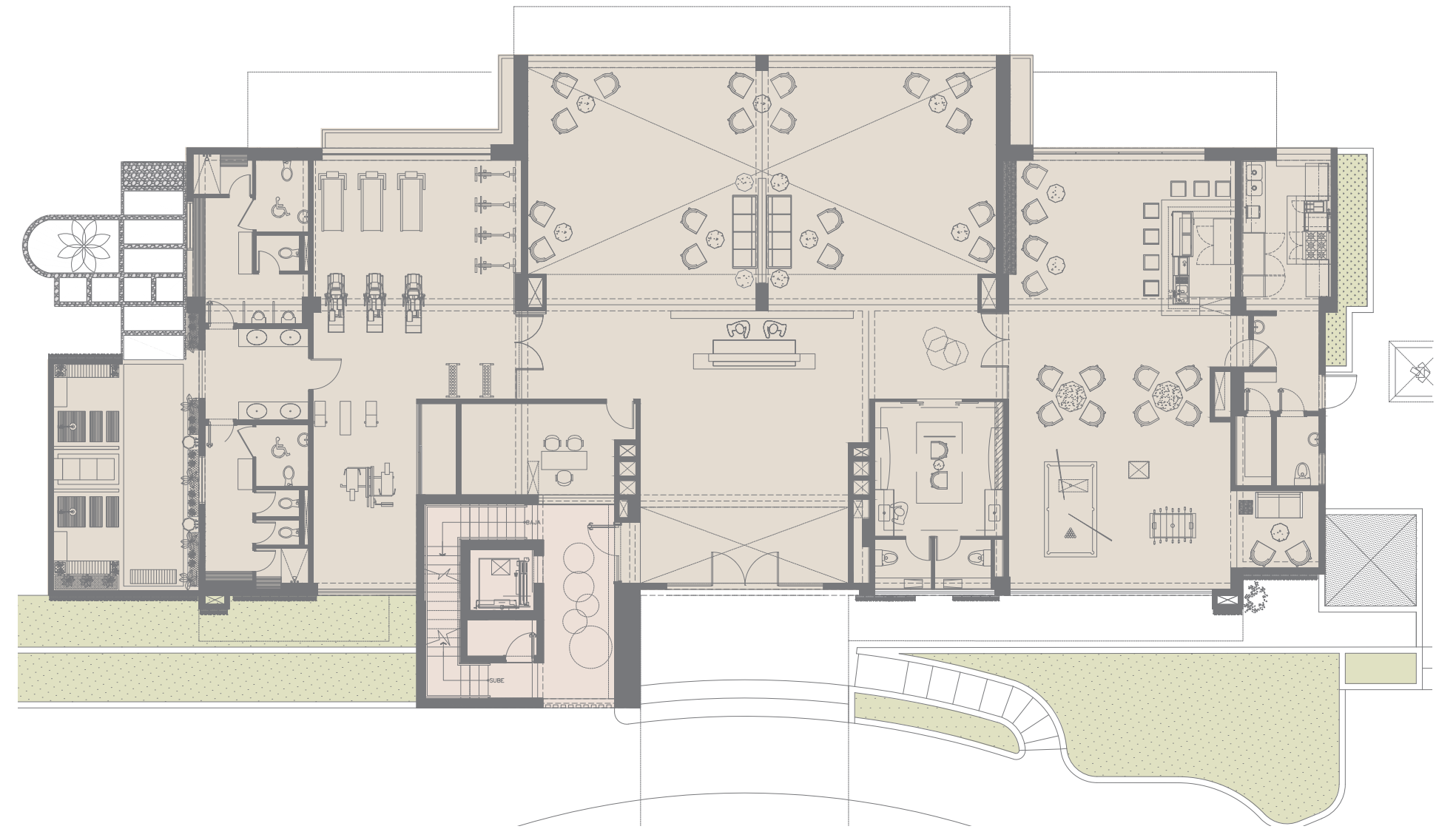


EDIFICIO # 3 | BUILDING # 3

6 NIVELES | 6 LEVELS

NIVEL 1 | LEVEL 1

LOBBY ÁREA SOCIAL | SOCIAL AREA - LOBBY



UBICACION | LOCATION



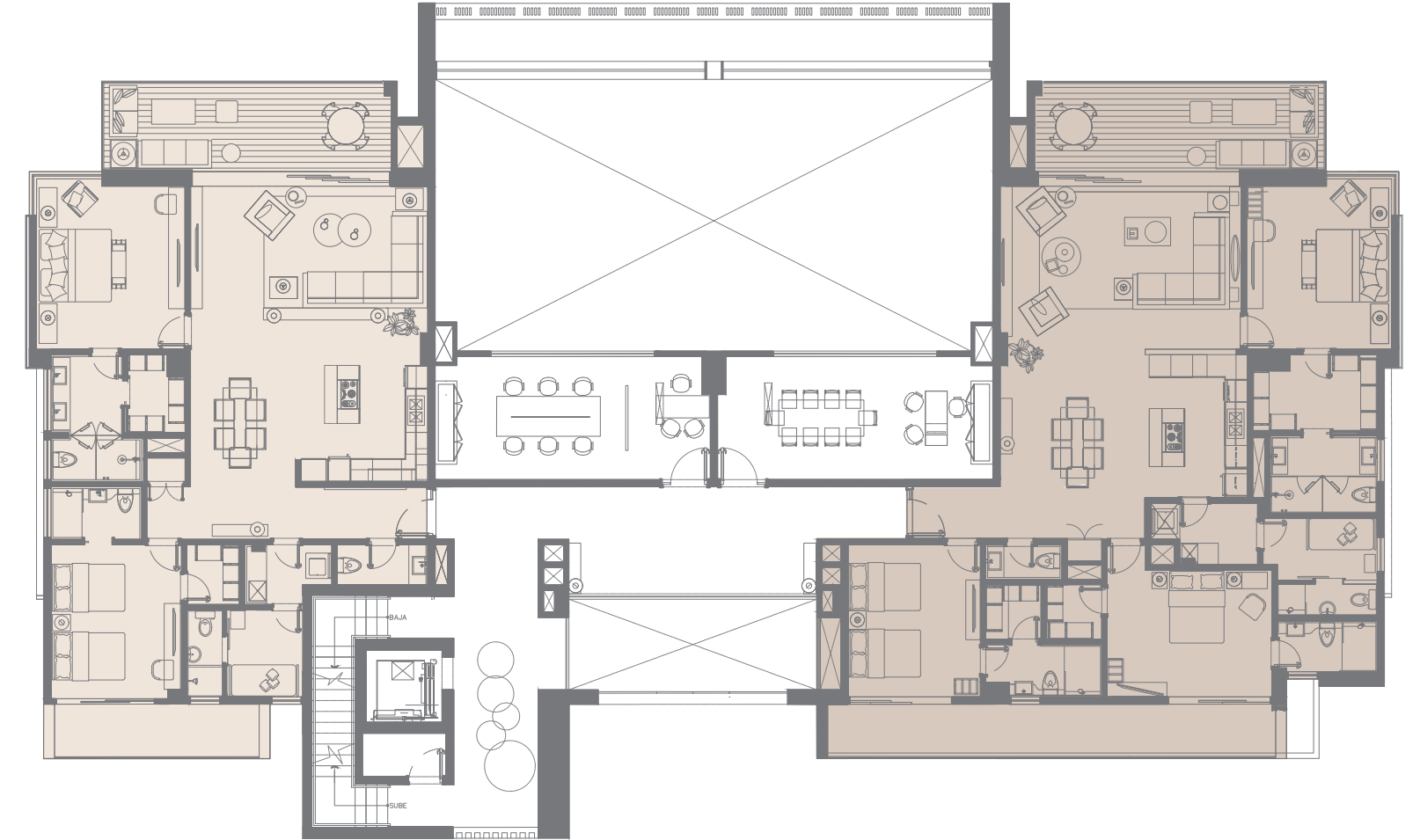
361 (D)	362 (A)	363 (A)	364 (E)
351(B)	352(A)	353(A)	354(G) 355(H)
341 (B)	342 (A)	343 (A)	344 (G) 345(H)
331 (B)	332 (A)	333 (A)	334 (C)
321 (B)			324 (C)
ÁREA SOCIAL   SOCIAL AREA			



EDIFICIO # 3 | BUILDING # 3  
321 (B)

6 NIVELES | 6 LEVELS

NIVEL 2 | LEVEL 2  
322 (C)

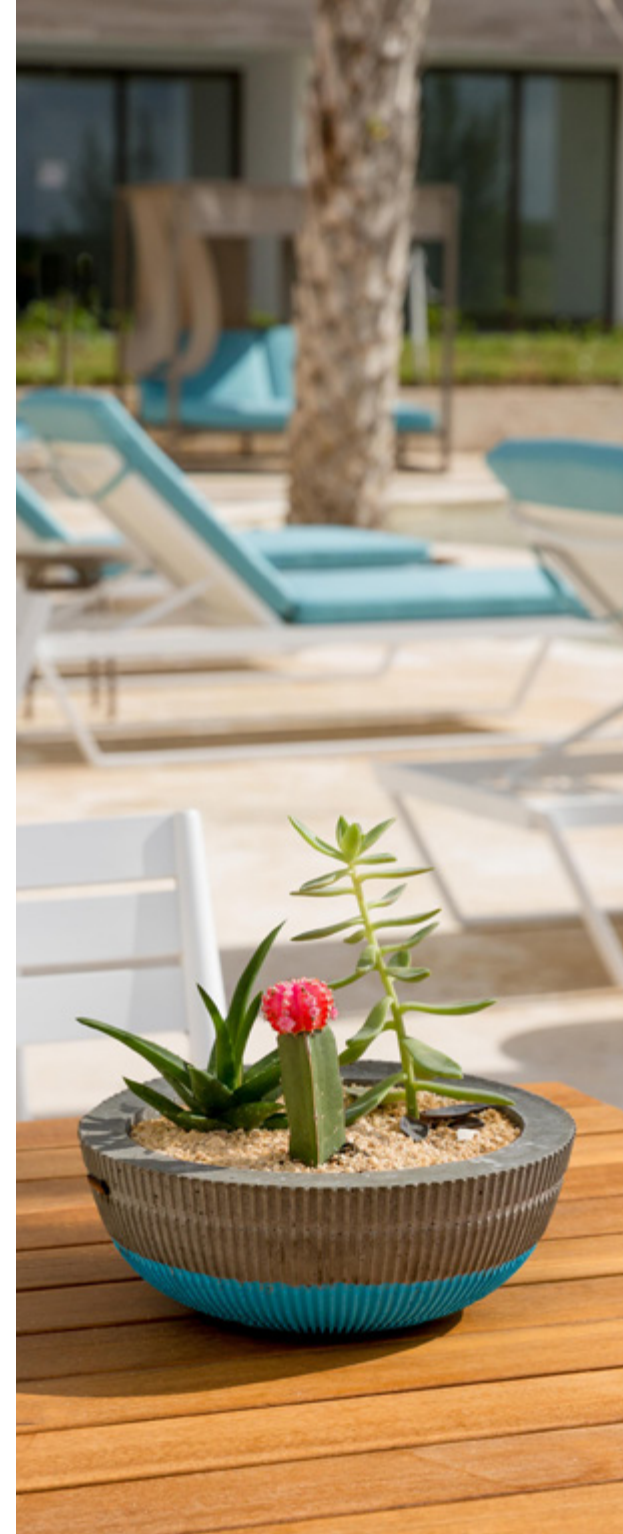


NO.	TIPO TYPE	NIVEL LEVEL	HAB. ROOMS	HAB. SERVICIO MAIDS ROOM	BAÑOS BATHROOMS	CONSTR. M <sup>2</sup>	CONSTR. FT <sup>2</sup>	JARDÍN   GARDEN M <sup>2</sup>	JARDÍN   GARDEN FT <sup>2</sup>	TERRAZA   TERRACE M <sup>2</sup>	TERRAZA   TERRACE FT <sup>2</sup>	TOTAL M <sup>2</sup>	TOTAL FT <sup>2</sup>
321	B	2	2	1	2.5	172.00	1,851.39					172.00	1,851.39
324	C	2	3	1	3.5	220.00	2,368.06					220.00	2,368.06

UBICACION | LOCATION



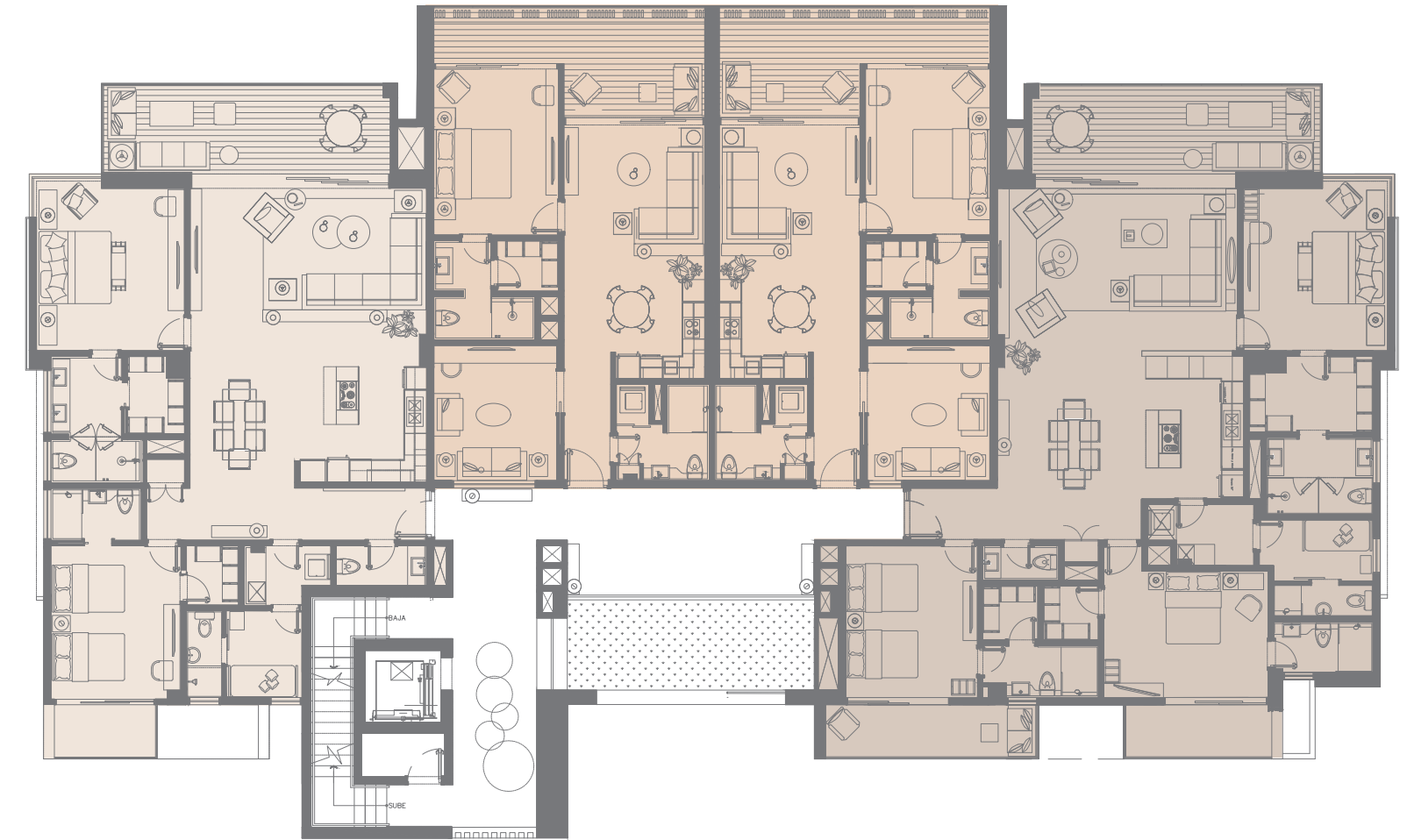
361 (D)	362 (A)	363 (A)	364 (E)
351(B)	352(A)	353(A)	354(G) 355(H)
341 (B)	342 (A)	343 (A)	344 (G) 345(H)
331 (B)	332 (A)	333 (A)	334 (C)
321 (B)			324 (C)
ÁREA SOCIAL   SOCIAL AREA			



EDIFICIO # 3 | BUILDING # 3  
331 (B)

6 NIVELES | 6 LEVELS  
332 (A) 333 (A)

NIVEL 3 | LEVEL 3  
334 (C)



NO.	TIPO TYPE	NIVEL LEVEL	HAB. ROOMS	HAB. SERVICIO MAIDS ROOM	BAÑOS BATHROOMS	CONSTR. M <sup>2</sup>	CONSTR. FT <sup>2</sup>	JARDÍN   GARDEN M <sup>2</sup>	JARDÍN   GARDEN FT <sup>2</sup>	TERRAZA   TERRACE M <sup>2</sup>	TERRAZA   TERRACE FT <sup>2</sup>	TOTAL M <sup>2</sup>	TOTAL FT <sup>2</sup>
331	B	3	2	1	2.5	172.00	1,851.39					172.00	1,851.39
332	A	3	1+		2	104.00	1,119.45					104.00	1,119.45
333	A	3	1+		2	104.00	1,119.45					104.00	1,119.45
334	C	3	3	1	3.5	217.00	2,335.77					217.00	2,335.77



UBICACION | LOCATION



361 (D)	362 (A)	363 (A)	364 (E)
351(B)	352(A)	353(A)	354(G)
341 (B)	342 (A)	343 (A)	344 (G)
331 (B)	332 (A)	333 (A)	334 (C)
321 (B)			324 (C)
ÁREA SOCIAL   SOCIAL AREA			



EDIFICIO # 3 | BUILDING # 3

6 NIVELES | 6 LEVELS

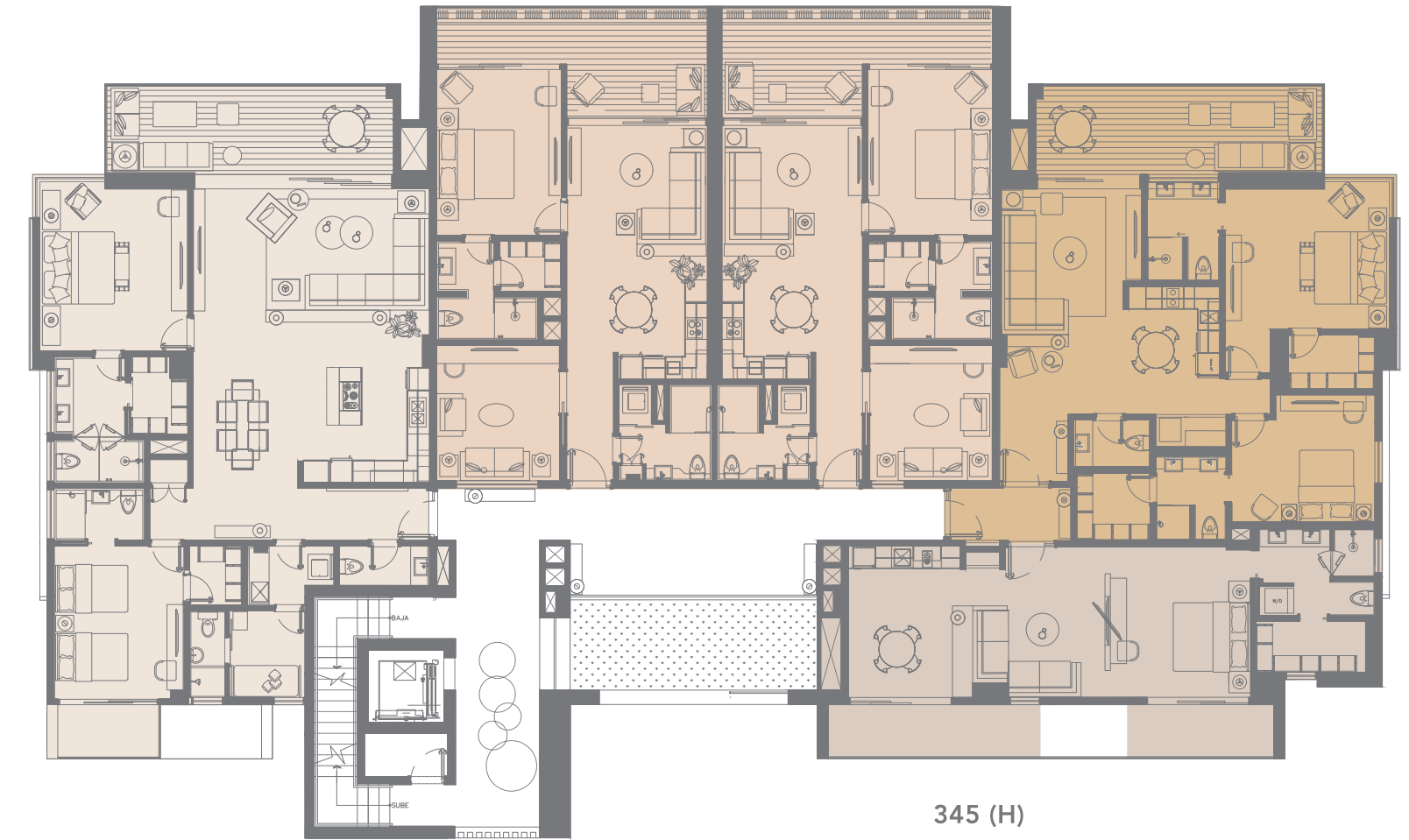
NIVEL 4 | LEVEL 4

341 (B)

342 (A)

343 (A)

344 (G)



NO.	TIPO TYPE	NIVEL LEVEL	HAB. ROOMS	HAB. SERVICIO MAIDS ROOM	BAÑOS BATHROOMS	CONSTR. M <sup>2</sup>	CONSTR. FT <sup>2</sup>	JARDÍN   GARDEN M <sup>2</sup>	JARDÍN   GARDEN FT <sup>2</sup>	TERRAZA   TERRACE M <sup>2</sup>	TERRAZA   TERRACE FT <sup>2</sup>	TOTAL M <sup>2</sup>	TOTAL FT <sup>2</sup>
341	B	4	2	1	2.5	174.00	1,872.92					174.00	1,872.92
342	A	4	1+		2	104.00	1,119.45					104.00	1,119.45
343	A	4	1+		2	104.00	1,119.45					104.00	1,119.45
344	G	4	2		2.5	126.00	1,356.25					126.00	1,356.25
345	H	4	1		1	86.00	925.70					86.00	925.70

UBICACION | LOCATION



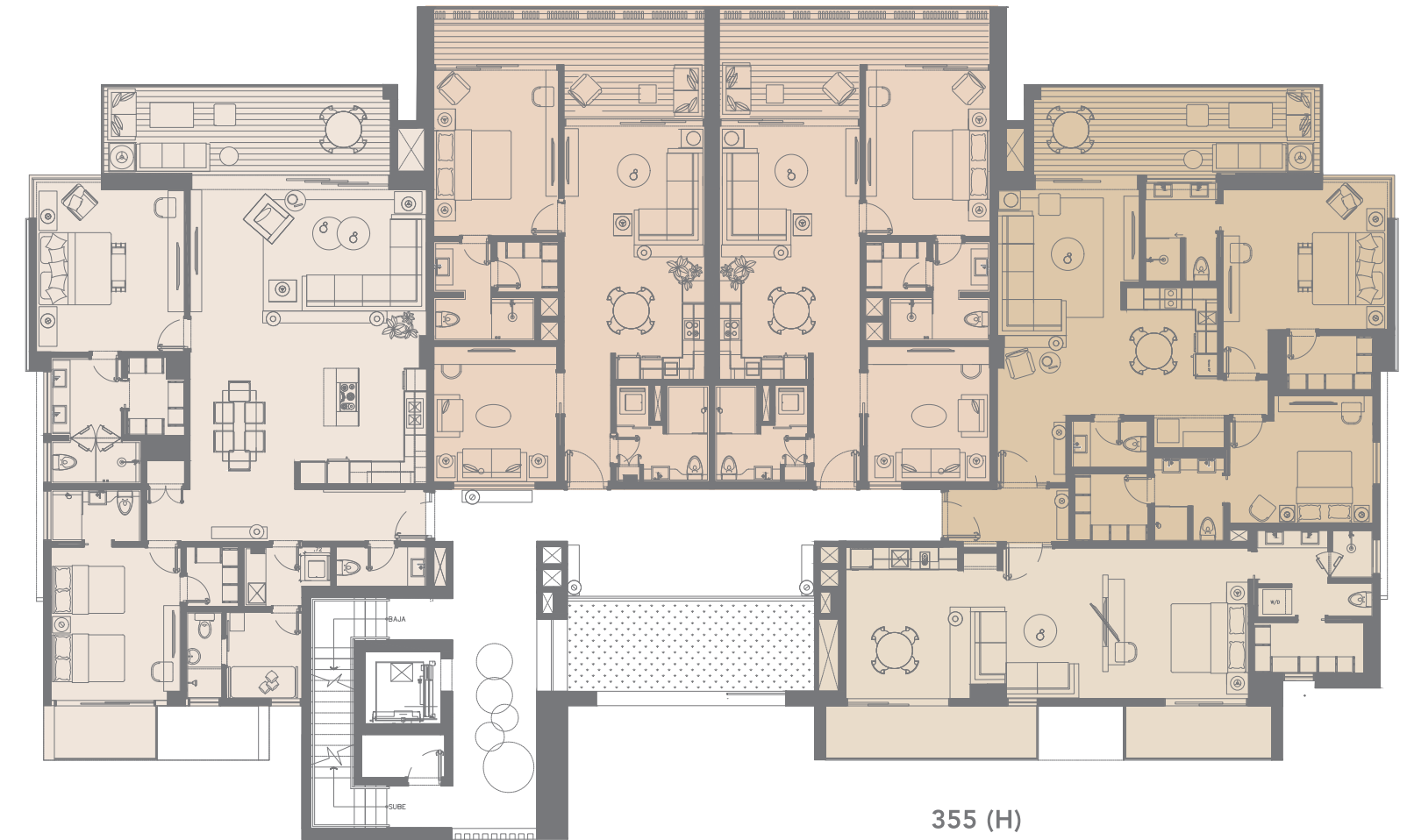
361 (D)	362 (A)	363 (A)	364 (E)
351(B)	352(A)	353(A)	354(G)
341 (B)	342 (A)	343 (A)	344 (G)
331 (B)	332 (A)	333 (A)	334 (C)
321 (B)			324 (C)
ÁREA SOCIAL   SOCIAL AREA			



EDIFICIO # 3 | BUILDING # 3  
351 (B)

6 NIVELES | 6 LEVELS  
352 (A) 353 (A)

NIVEL 5 | LEVEL 5  
354 (G)



NO.	TIPO TYPE	NIVEL LEVEL	HAB. ROOMS	HAB. SERVICIO MAIDS ROOM	BAÑOS BATHROOMS	CONSTR. M <sup>2</sup>	CONSTR. FT <sup>2</sup>	JARDÍN   GARDEN M <sup>2</sup>	JARDÍN   GARDEN FT <sup>2</sup>	TERRAZA   TERRACE M <sup>2</sup>	TERRAZA   TERRACE FT <sup>2</sup>	TOTAL M <sup>2</sup>	TOTAL FT <sup>2</sup>
351	B	5	2	1	2.5	172.00	1,851.39					172.00	1,851.39
352	A	5	1+		2	104.00	1,119.45					104.00	1,119.45
353	A	5	1+		2	104.00	1,119.45					104.00	1,119.45
354	G	5	2		2.5	126.00	1,356.25					126.00	1,356.25
355	H	5	1		1	83.00	893.40					83.00	893.40

UBICACION | LOCATION



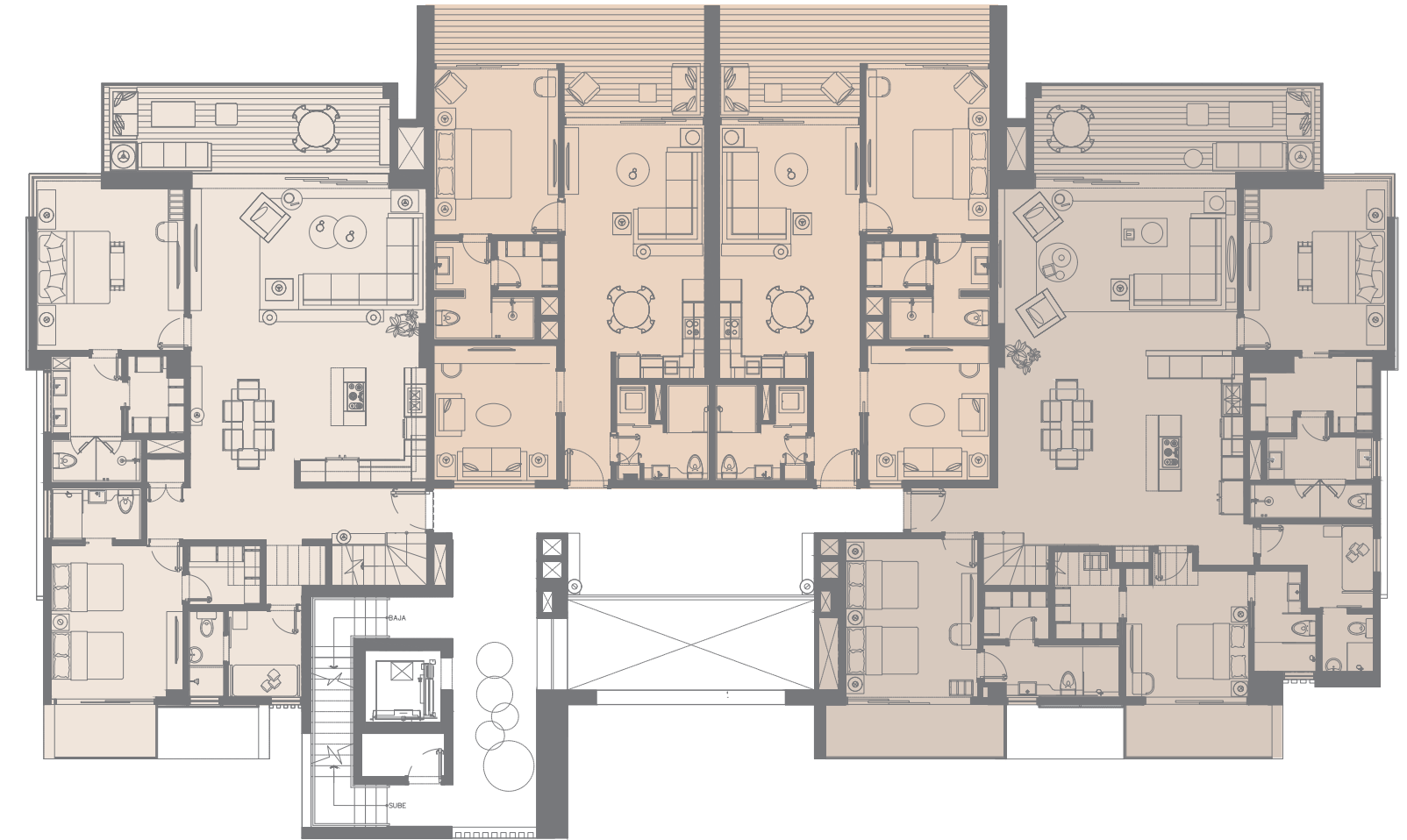
361 (D)	362 (A)	363 (A)	364 (E)
351(B)	352(A)	353(A)	354(G) 355(H)
341 (B)	342 (A)	343 (A)	344 (G) 345(H)
331 (B)	332 (A)	333 (A)	334 (C)
321 (B)			324 (C)
ÁREA SOCIAL   SOCIAL AREA			



EDIFICIO # 3 | BUILDING # 3  
361 (D)

6 NIVELES | 6 LEVELS  
362 (A) 363 (A)

NIVEL 6 | LEVEL 6  
364 (E)



NO.	TIPO TYPE	NIVEL LEVEL	HAB. ROOMS	HAB. SERVICIO MAIDS ROOM	BAÑOS BATHROOMS	CONSTR. M <sup>2</sup>	CONSTR. FT <sup>2</sup>	JARDÍN   GARDEN M <sup>2</sup>	JARDÍN   GARDEN FT <sup>2</sup>	TERRAZA   TERRACE M <sup>2</sup>	TERRAZA   TERRACE FT <sup>2</sup>	TOTAL M <sup>2</sup>	TOTAL FT <sup>2</sup>
361	D	6	2	1	2.5	172.00	1,851.39			117.00	1,259.38	289.00	1,968.39
362	A	6	1+		2	104.00	1,119.45					104.00	1,119.45
363	A	6	1+		2	104.00	1,119.45					104.00	1,119.45
364	E	6	3	1	3.5	217	2,335.77			120.00	1,291.67	337.00	3,627.43



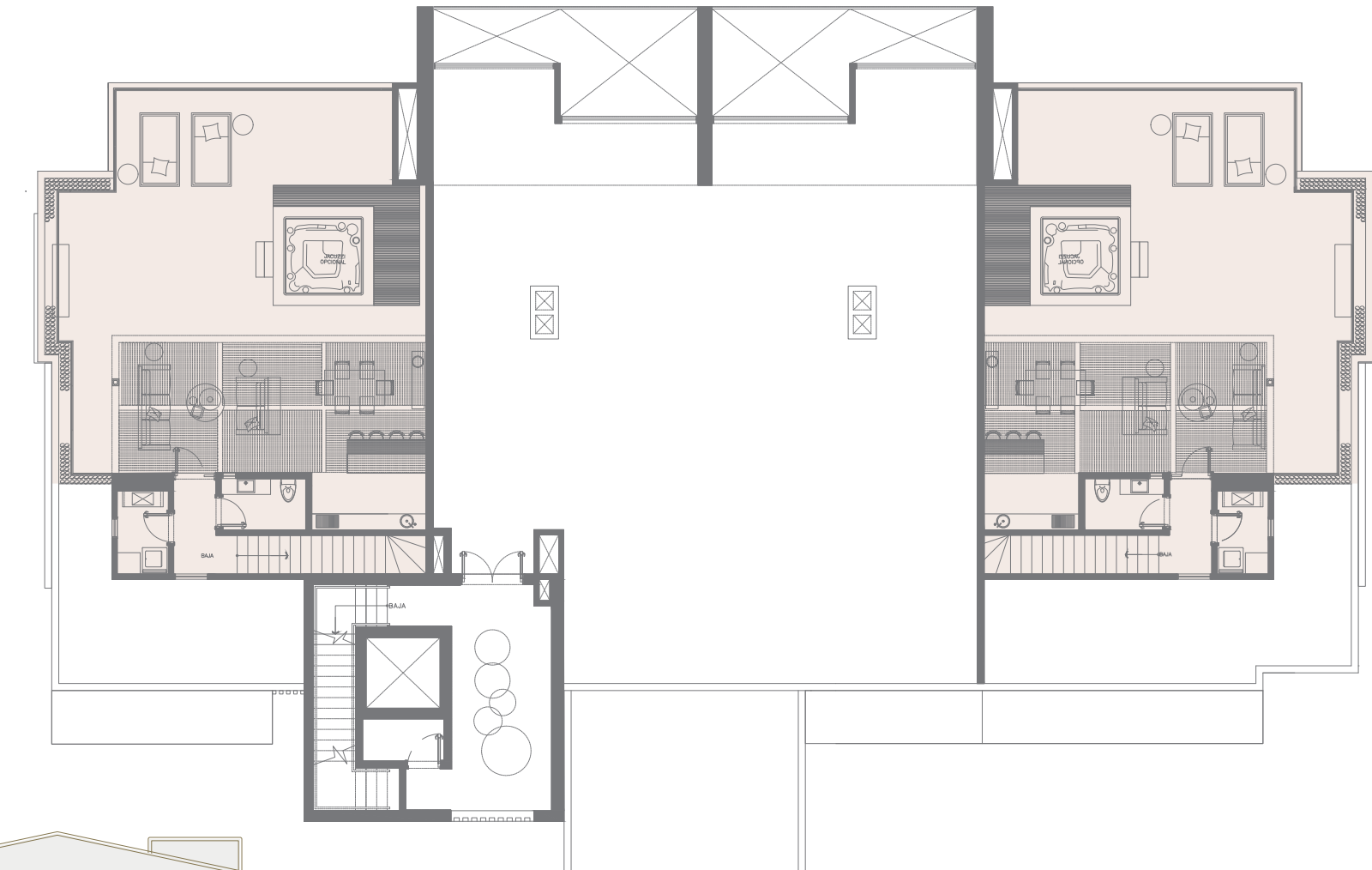
EDIFICIO # 3 | BUILDING # 3

6 NIVELES | 6 LEVELS

TERRAZA | TERRACE

TERRAZA | TERRACE PENTHOUSE D

TERRAZA | TERRACE PENTHOUSE E



361 (D)	362 (A)	363 (A)	364 (E)
351(B)	352(A)	353(A)	354(G) 355(H)
341 (B)	342 (A)	343 (A)	344 (G) 345(H)
331 (B)	332 (A)	333 (A)	334 (C)
321 (B)			324 (C)
ÁREA SOCIAL   SOCIAL AREA			



## TERMINACIONES Y ACABADOS

### REVESTIMIENTOS:

- ☛ Mármol y porcelanato en pisos de las áreas interiores.
- ☛ Revestimiento de baños en mármol y porcelanato.
- ☛ Terrazas en porcelanato tipo madera.
- ☛ Pañete liso en áreas interiores.
- ☛ Techos con plafones de sheetrock.

### PUERTAS Y VENTANAS

- ☛ Puertas y ventanas corredizas de aluminio y cristal.
- ☛ Puertas interiores apaneladas de madera.
- ☛ Puertas y divisiones de duchas en baño en cristal templado.
- ☛ Barandas en balcones en cristal laminado.

### BAÑOS:

- ☛ Aparatos sanitarios importados.
- ☛ Topes de mármol.
- ☛ Griferías de alta resistencia con acabados en cromo.

### COCINA:

- ☛ Muebles modulares europeos en aglomerado de madera de alta densidad.
- ☛ Tope y backsplash en cuarzo.
- ☛ Fregadero en acero inoxidable.
- ☛ Griferías de alta resistencia con acabados de cromo.

### ELECTRODOMÉSTICOS:

- ☛ Nevera en terminación de acero inoxidable.
- ☛ Estufas y hornos empotrados de terminación acero inoxidable.
- ☛ Calentador de agua.
- ☛ Acondicionadores de aire de alta eficiencia en habitaciones y áreas sociales.

### ILUMINACIÓN:

- ☛ Luminarias empotradas de led en áreas interiores.

## FINISHING MATERIALS

### FINISHES:

- ☛ Marble and Porcelain tile flooring in all interior areas.
- ☛ Marble and porcelain bathroom wall tiles.
- ☛ Wood type porcelain terraces.
- ☛ White interior wall coating.
- ☛ Sheetrock ceiling.

### DOORS AND WINDOWS

- ☛ Aluminum and glass sliding doors and windows.
- ☛ Wood finish style interior doors.
- ☛ Laminated glass bathroom doors and shower divisions.
- ☛ Laminated glass balcony railings.

### BATHROOMS:

- ☛ Imported sanitary ware.
- ☛ Marble vanity tops.
- ☛ High resistance taps with chrome finishes.

### KITCHEN:

- ☛ European modular furniture in high-density chipboard.
- ☛ Quartz top and backsplash.
- ☛ Stainless steel sink.
- ☛ High resistance taps with chrome finishes.

### APPLIANCES:

- ☛ Stainless steel finish refrigerator.
- ☛ Stainless steel finish stove and built-in oven.
- ☛ Water heater.
- ☛ High efficiency air conditioners in bedrooms and social areas.

### LIGHTING:

- ☛ built-in led indoor lighting



- ◉ Acceso a las playas de Cap Cana.
- ◉ Puede optar por un amarre en la Marina Cap Cana.
- ◉ Tarifa preferencial en el Cap Cana Heritage School.
- ◉ Puede adquirir una membresía del club de golf Punta Espada, del club de playa Eden Roc en Caletón.
- ◉ Tarifas con descuento en una variedad de establecimientos dentro de Cap Cana.

### *Beneficios exclusivos para propietarios:*

#### EXCLUSIVE BENEFITS FOR OWNERS:

- ◉ Access to the beaches of Cap Cana.
- ◉ Access to boatslips in the Marina Cap Cana.
- ◉ Preferential rate at Cap Cana Heritage School.
- ◉ You may apply for memberships at Punta Espada Golf Club and Eden Roc Caletón Beach Club.
- ◉ Discounts in a variety of establishments and amenities of CapCana.



- Sistema de generación primaria de energía (14 MW, cableado soterrado).
- Sistema de generación eléctrica de emergencia por zonas (9MW).
- Infraestructura vial asfaltada (+100 km).
- Suministro de agua potable, servicio de manejo de aguas residuales (+112 km).
- Servicio de telefonía y data (110 km, cableado soterrado).
- Servicio de seguridad y bomberos 24 horas.
- Centro Médico y ambulancia para emergencias.
- Servicio de recogida de basura.
- Asociación de Propietarios para el manejo de las área comunes

### *Infraestructura de primer mundo:*

#### FIRST WORLD INFRASTRUCTURE:

- Primary power generation system (14 MW, underground wiring).
- Emergency electricity generation system by zones (9MW).
- Paved road infrastructure (+100 km).
- Drinking water supply, wastewater management service (+112 km).
- Telephone and data service (110 km, underground wiring).
- Security service and firefighters 24 hours.
- Medical center and ambulance for emergencies.
- Garbage collection service.
- Owners Association for the management of common areas.





# ILLAGO

BEACH & GOLF | CAP CANA

+1.809.669.3049 | [ventas@illagoatjuanillobeach.com](mailto:ventas@illagoatjuanillobeach.com) | [illagoatjuanillobeach.com](http://illagoatjuanillobeach.com)



DESARROLLADO POR | DEVELOPED BY



CERTIFICADO DE REGISTRO DEL DEPARTAMENTO DE ASUNTOS DEL CONSUMIDOR NO. 0031-P. OBTENGA EL REPORTE DE LA PROPIEDAD REQUERIDO POR LA LEY FEDERAL Y LEALO ANTES DE FIRMAR CUALQUIER DOCUMENTO. NINGUNA AGENCIA FEDERAL HA JUZGADO LOS MERITOS O VALOR DE ESTA PROPIEDAD. UN REPORTE DE OFERTA HA SIDO DEPOSITADO POR ANTE EL DEPARTAMENTO DE ESTADO EN EL ESTADO DE NUEVA YORK. LA ENTIDAD OFERTANTE REGISTRADA, TIENE DISPONIBLE, SEGUN SE REQUIERA, UNA COPIA DE DICHO REPORTE DE OFERTA, EL REGISTRO DEL REPORTE VERIFICADO Y DEL REPORTE DE OFERTA CON EL DEPARTAMENTO DE ESTADO DEL ESTADO DE NUEVA YORK NO CONSTITUYE UNA APROBACION DE LA VENTA U ALQUILER O OFERTA DE VENTA U ALQUILER POR PARTE DEL DEPARTAMENTO DE ESTADO U OTRO OFICIAL DEL MISMO, O QUE EL DEPARTAMENTO DE ESTADO HAYA EN NINGUN MODO APROBADO LOS MERITOS DE TAL OFRECIMIENTO. ESTE MATERIAL NO CONSTITUYE UNA OFERTA DE VENTAS EN CALIFORNIA NI EN CUALQUIER OTRO ESTADO DONDE ESTE PROHIBIDO POR LEY.

CERTIFICATE OF REGISTRY OF THE DEPARTMENT FOR CONSUMER AFFAIRS NO.0031-P. OBTAIN THE PROPERTY REPORT REQUIRED BY FEDERAL LAW AND READED BEFORE SIGNING ANYTHING. NO FEDERAL AGENCY HAS JUDGED THE MERITS OR VALUE, IF ANY, OF THIS PROPERTY. AN OFFERING STATEMENTS HAS BEEN FILED WITH THE DEPARTMENT OF STATE OF NEW YORK. A COPY OF THE OFFERING STATEMENT IS AVAILABLE, UPON REQUEST FROM THE SUBDIVIDER. THE FILING OF THE VERIFIED STATEMENT AND OFFERING STATEMENT WITH THE DEPARTMENT OF STATE OF THE STATE OF NEW YORK DOES NOT CONSTITUTE APPROVAL OF THE SALE OR LEASE OR OFFER FOR SALE OR LEASE BY THE DEPARTMENT OF STATE OR ANY OFFICER THEREOF, OR WHAT THE DEPARTMENT OF STATE HAS IN ANY WAY PASSED UPON THE MERITS OF SUCH OFFERING. THIS IS NOT AN OFFERING IN CALIFORNIA OR ANY STATE WHERE PROHIBITED BY LAW.