



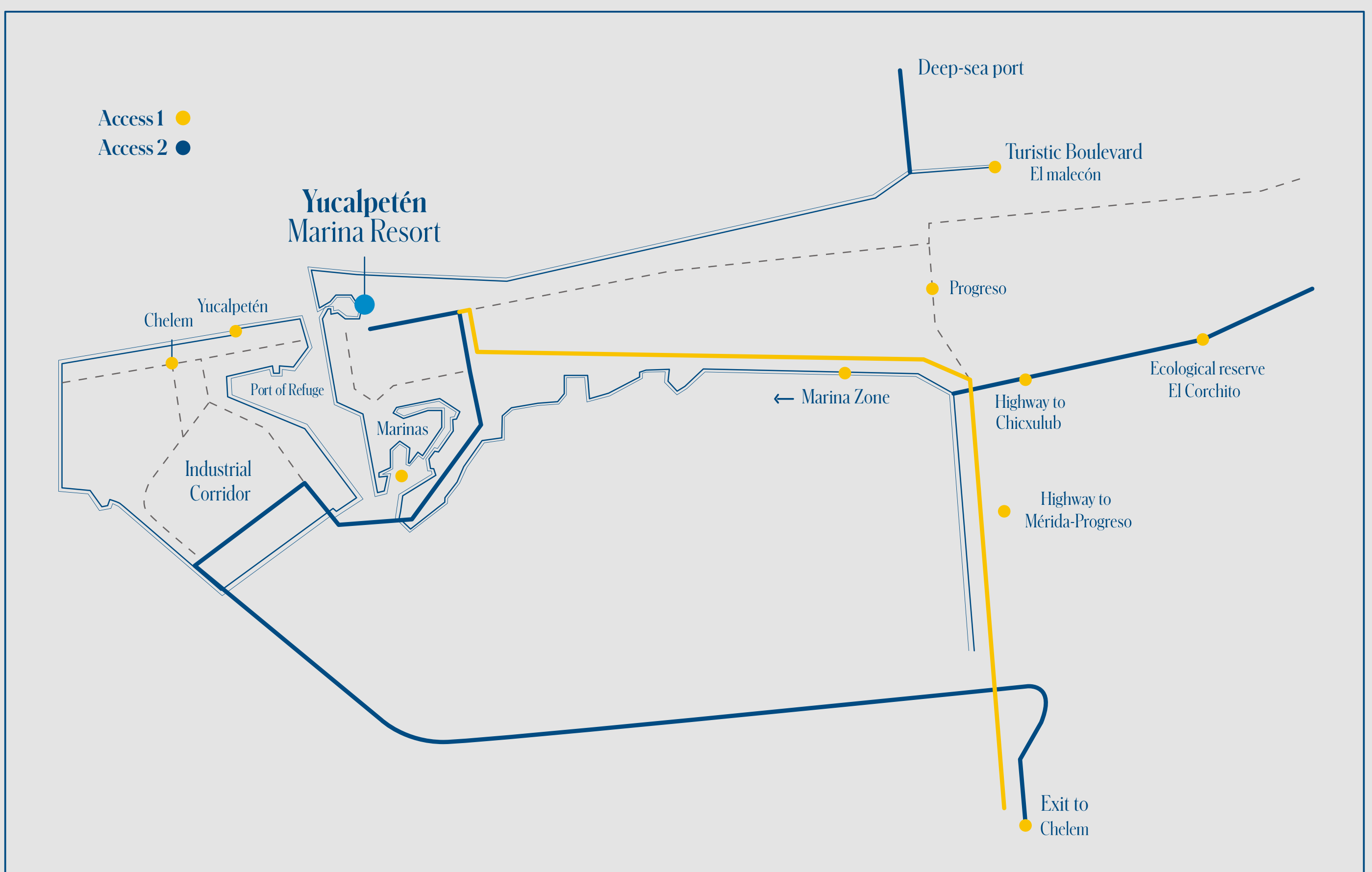
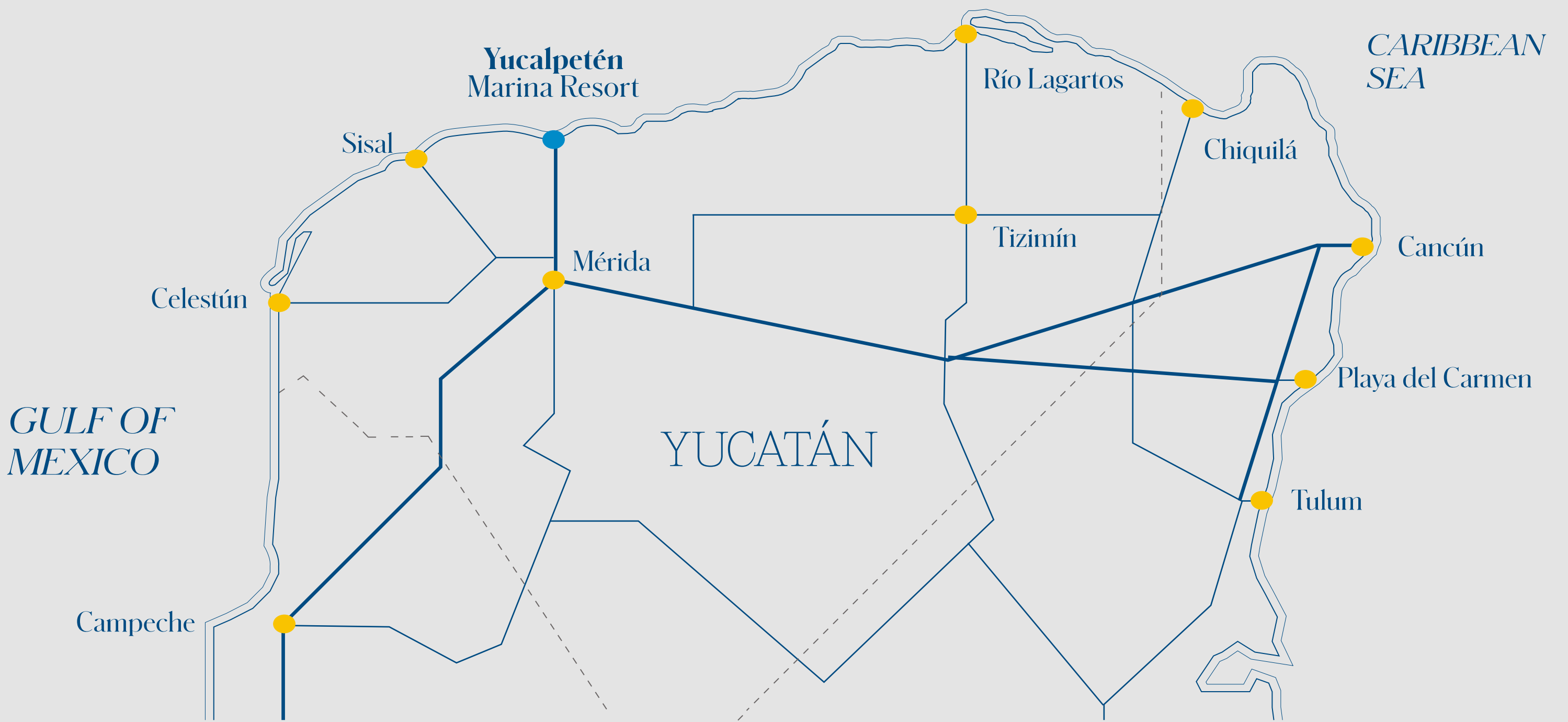
# Yucalpetén Resort Marina

**Be a pioneer of investment in the area and turns your vision into a life of unique experiences; life, relaxation, gastronomy, entertainment, sailing and exclusivity.**





# Location





# Residential.

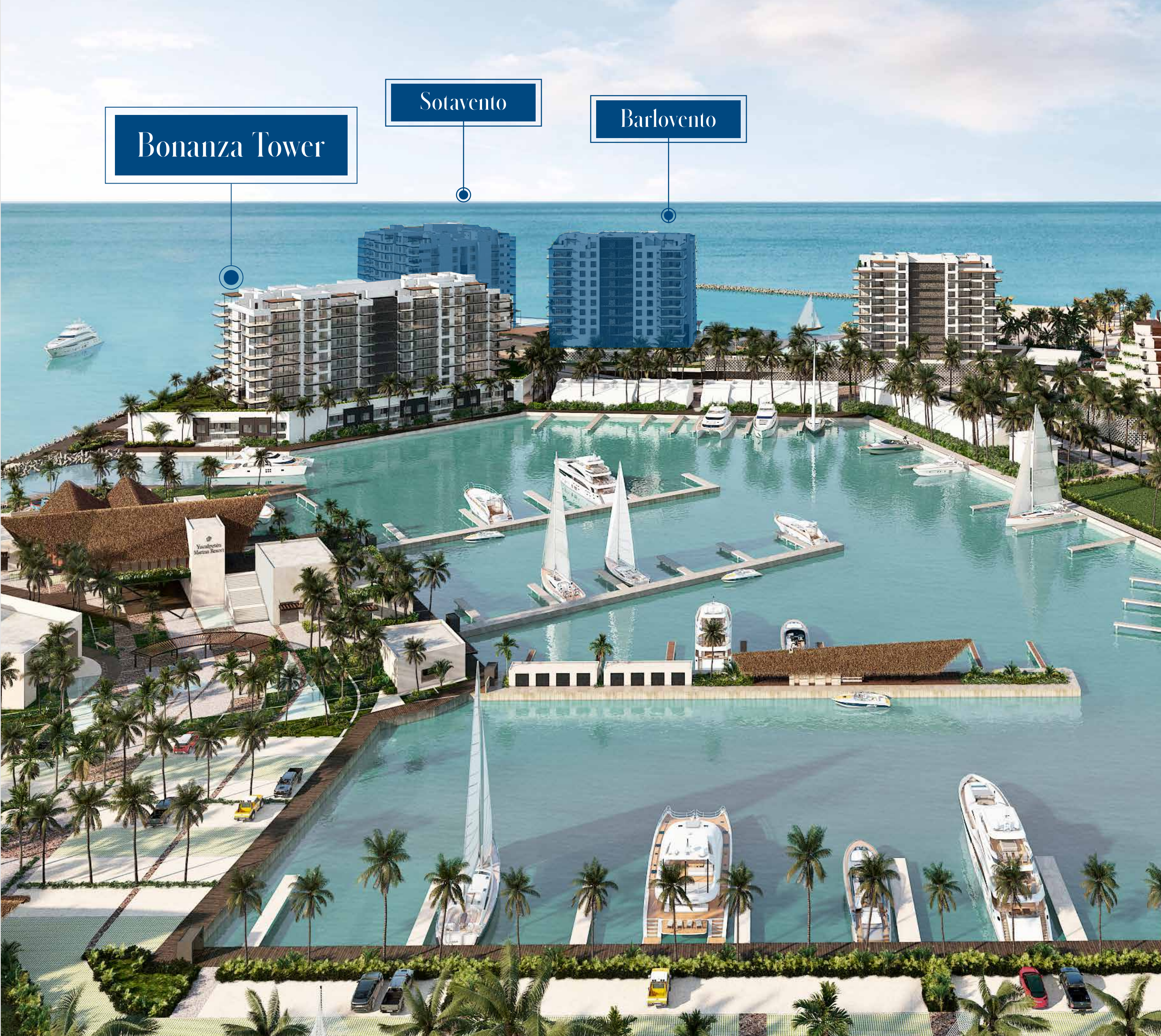


PRG. YUC.

# Bonanza Tower



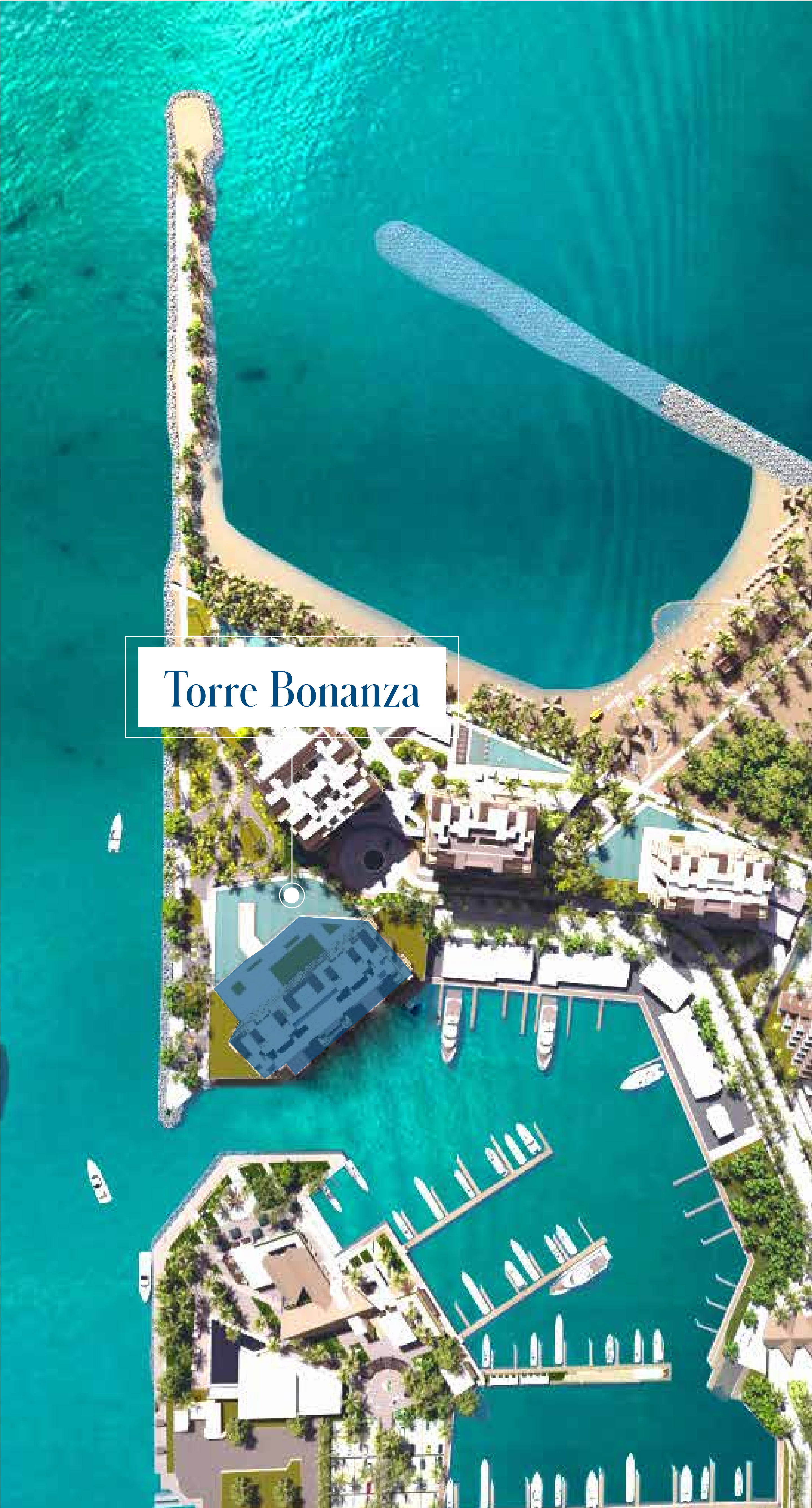






The first two towers of four, in a magnificent complex with 360 emerald sea and vegetation, full of life and activities..





Torre Bonanza



**More than 40 amenities**  
within the project  
make a big difference  
for your investment.







Exclusive Sidewalk.









# Shared amenities located on the second level.





- 
- *Lobby*
  - *Swimming pool*
    - *Snack Bar*
    - *Events Room*
  - *Meeting Room*
    - *Kid's club*
    - *Junior's Club*
    - *Senior's Club*
  - *Business Club*











A project with  
everything you need  
for a life of luxury, rest  
and first class nautical  
experiences in  
Progreso, Yucatán.







**173 units.**  
**Condos from 2 & 3**  
**bedrooms**  
**Villas & Penthouses**









PRG. YUC.

# Units Type





# Condo Type A2.

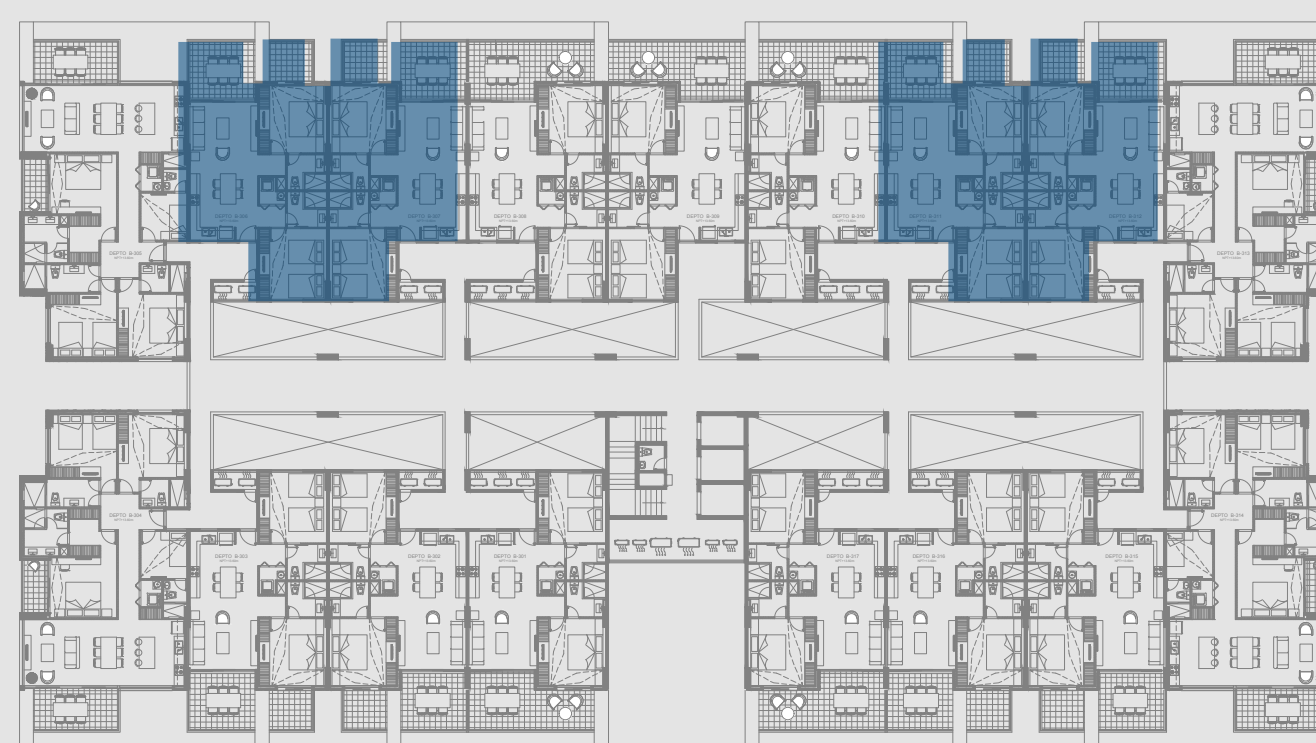
● Interior Area	896.95 ft <sup>2</sup>
● Balcony	237.34 ft <sup>2</sup>
● Parking	134.54 ft <sup>2</sup>

<b>Total</b>	<b>11268.84 ft<sup>2</sup></b>
--------------	--------------------------------

● Bedrooms	2
● Bathrooms	2
● Den	0
● Parking spots	1

Torre Bonanza  
Ocean view

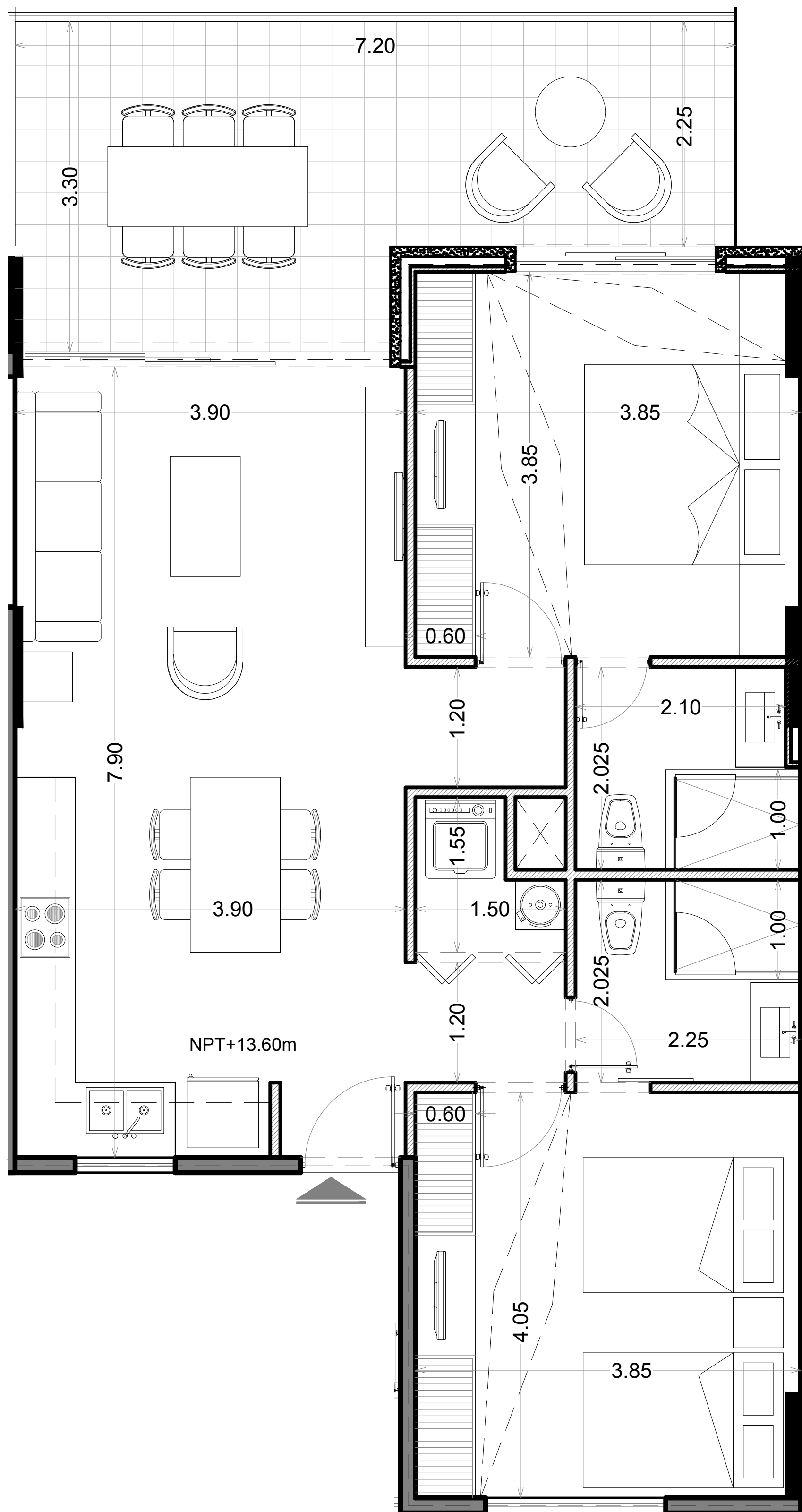
Ocean - Channel View



Marina view



# Condo Type A2.





# Condo Type C2.

● Interior Area	1071.87 ft <sup>2</sup>
● Balcony	235.94 ft <sup>2</sup>
● Parking	269.09 ft <sup>2</sup>

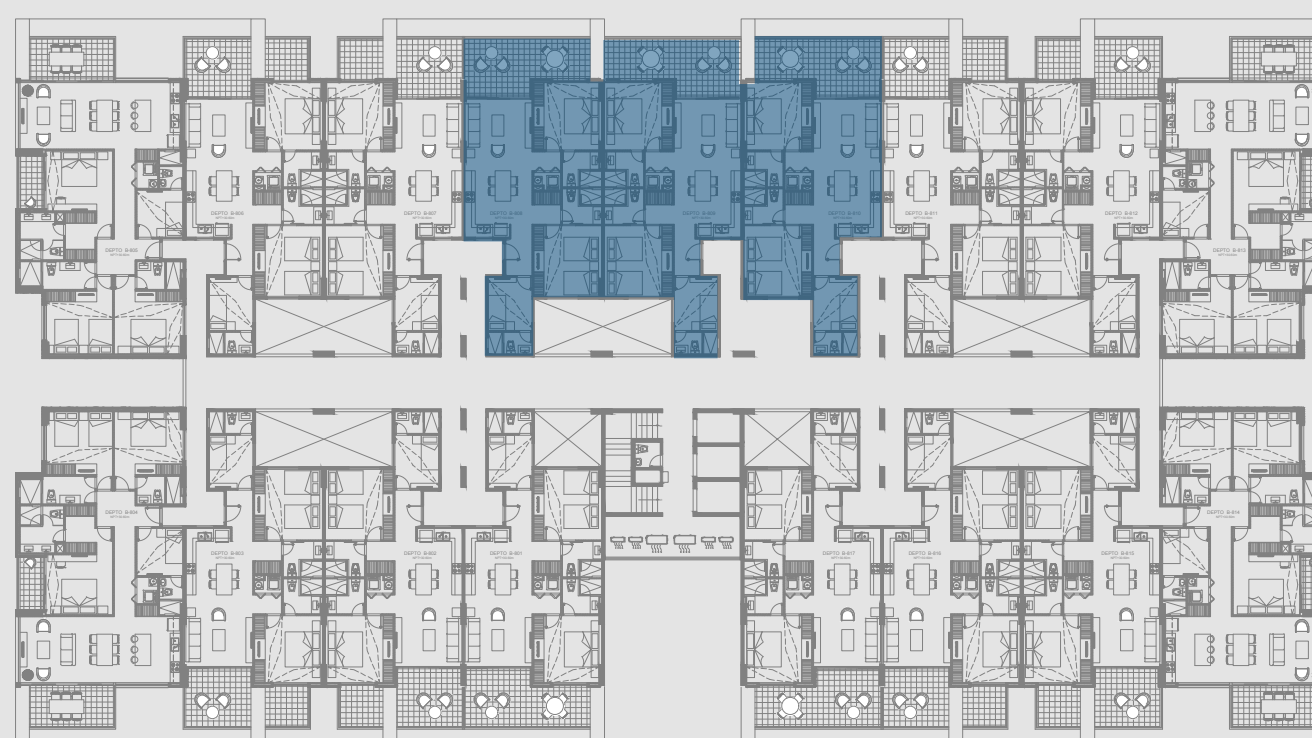
<b>Total</b>	<b>1576.91 ft<sup>2</sup></b>
--------------	-------------------------------

● Bedrooms	2
● Bathrooms	3
● Den	1
● Parking spots	2



Torre Bonanza  
Ocean view

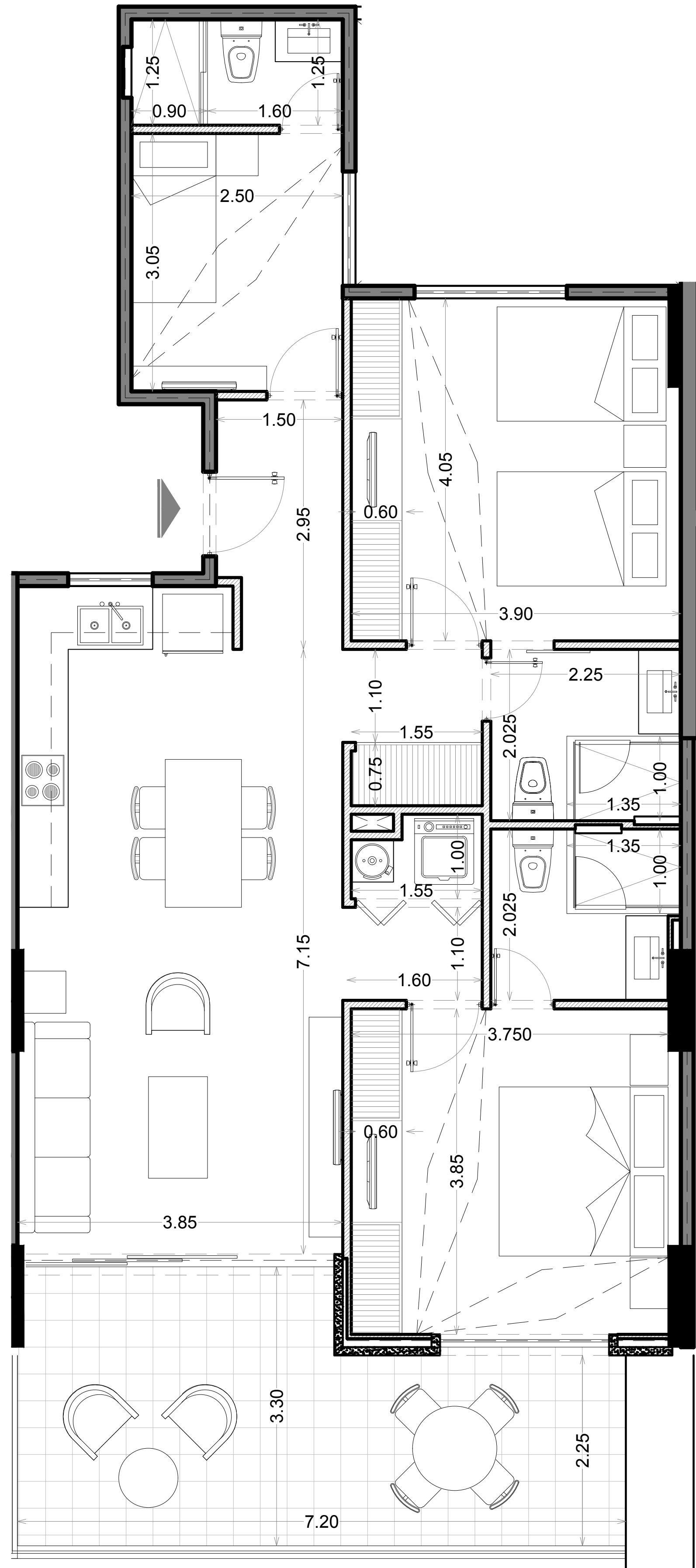
Ocean - Channel View



Marina view



# Condo Type C2.





# Condo Type D1.

● Interior Area	1508.34 ft <sup>2</sup>
● Balcony	187.29 ft <sup>2</sup>
● Parking	269.09 ft <sup>2</sup>

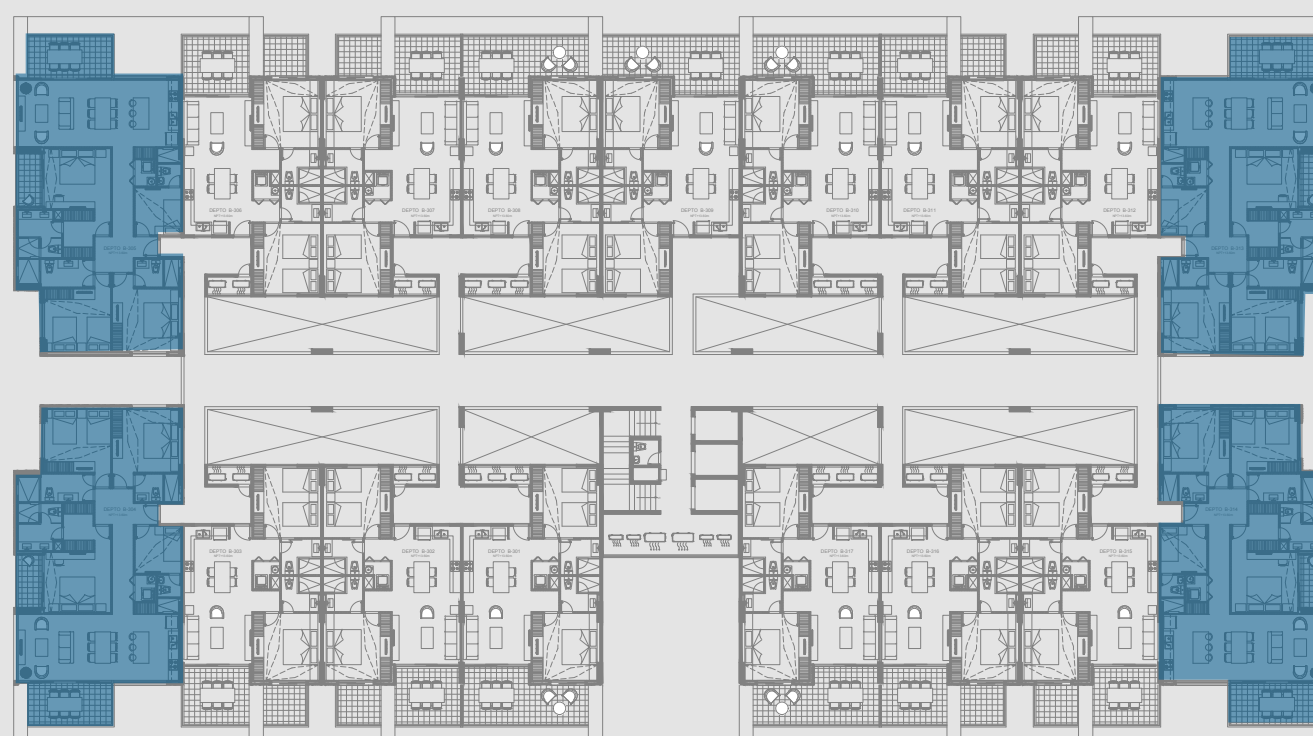
<b>Total</b>	<b>1964.73 ft<sup>2</sup></b>
--------------	-------------------------------

● Bedrooms	4
● Bathrooms	4
● Den	1
● Parking spots	2



Torre Bonanza  
Ocean view

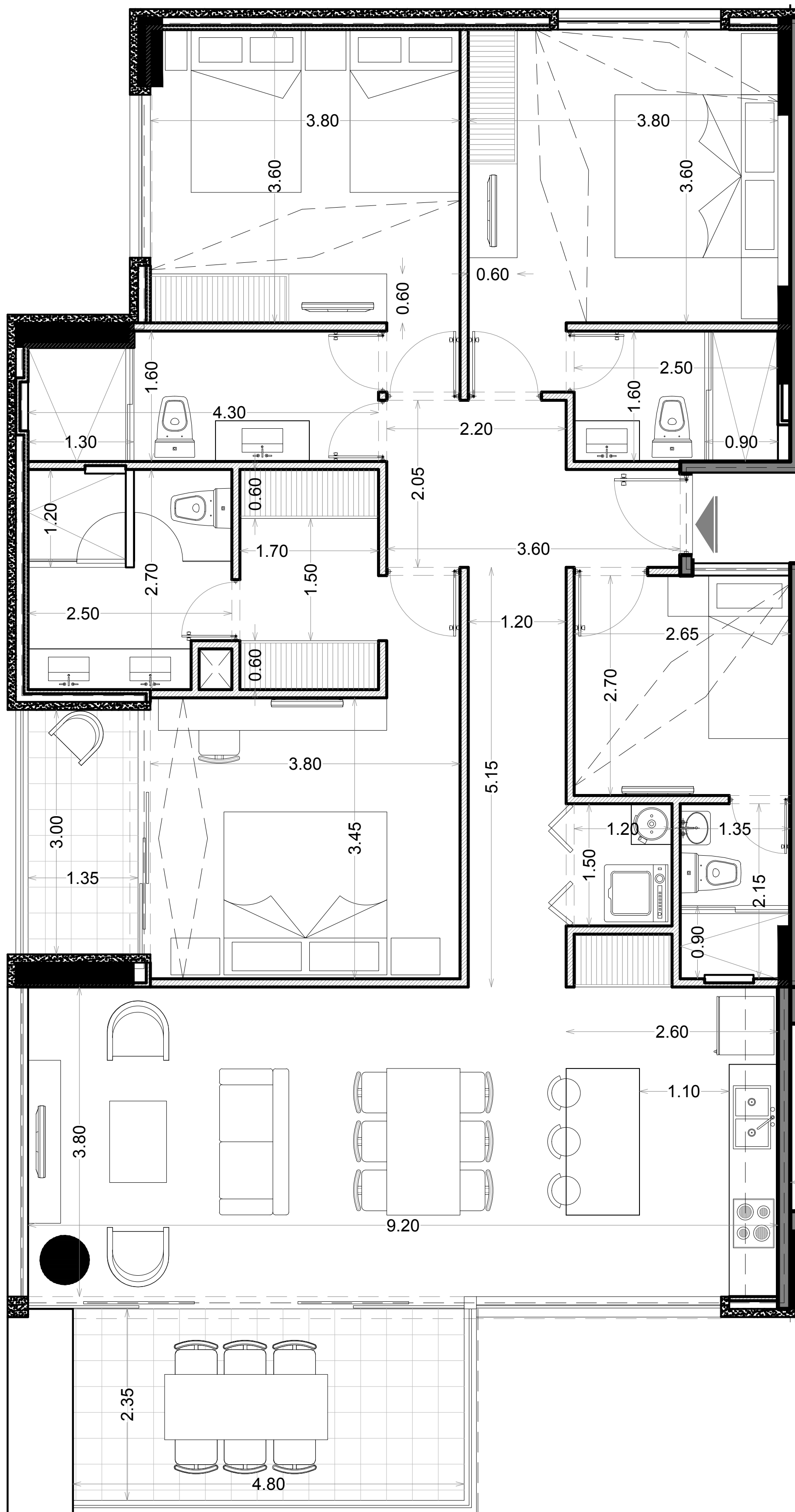
Ocean - Channel View



Marina view



# Departamento tipo D1.





PRG. YUC.

# Penthouse.









# Unit Type D-PH.

● Interior Area	186.72 m <sup>2</sup>
● Balcony	17.40 m <sup>2</sup>
● Sundesk	62.01 m <sup>2</sup>
● Parking	37.50 m <sup>2</sup>

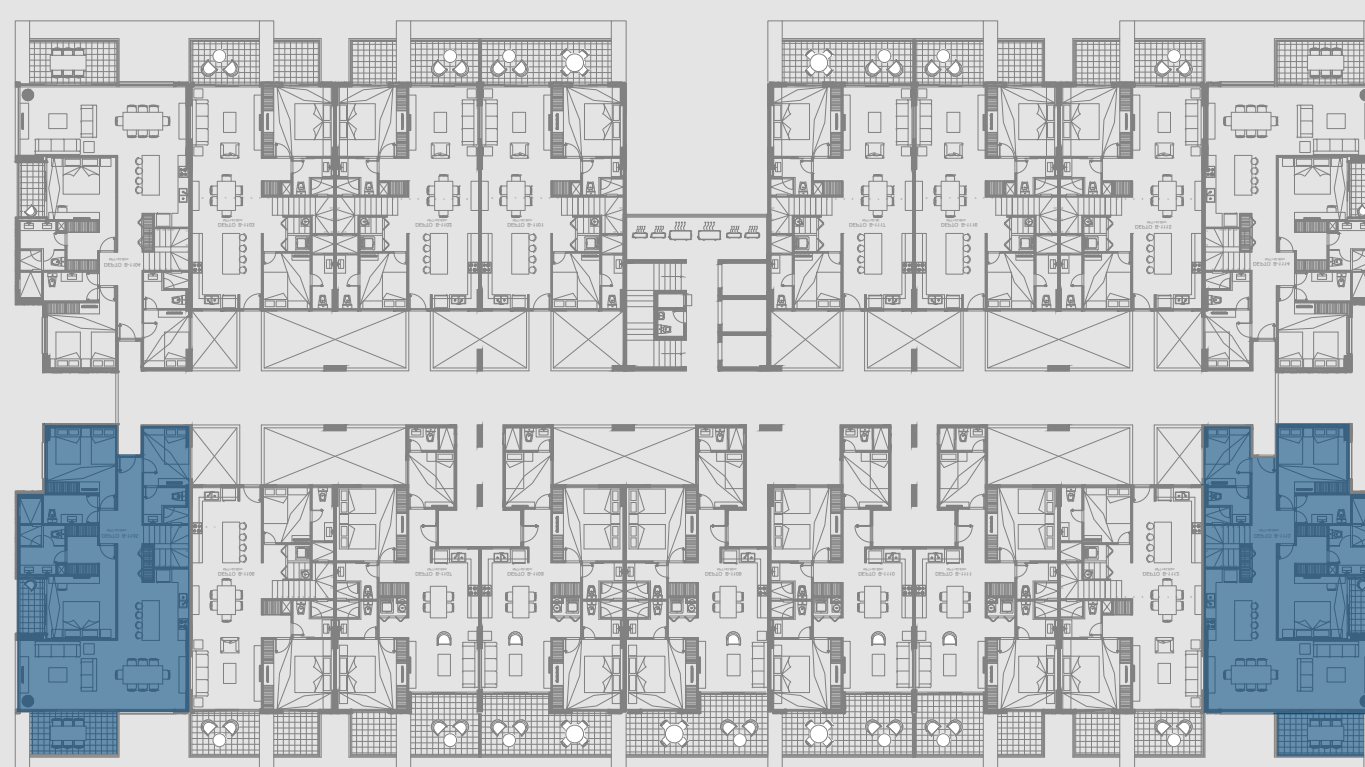
<b>Total</b>	<b>303.63 m<sup>2</sup></b>
--------------	-----------------------------

● Bedrooms	4
● Bathrooms	4.5
● Den	1
● Parking spots	3



Bonanza Tower  
Ocean view

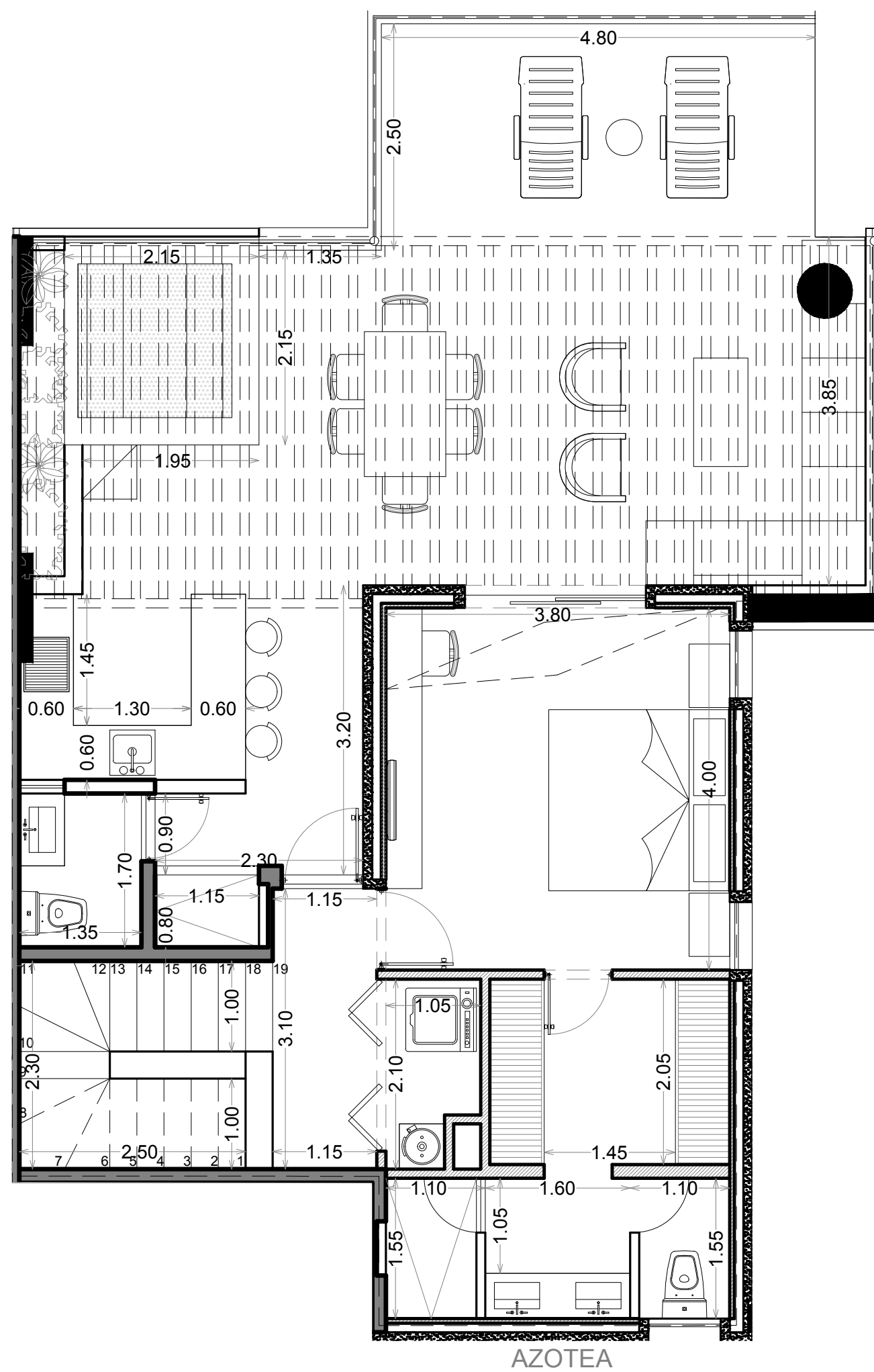
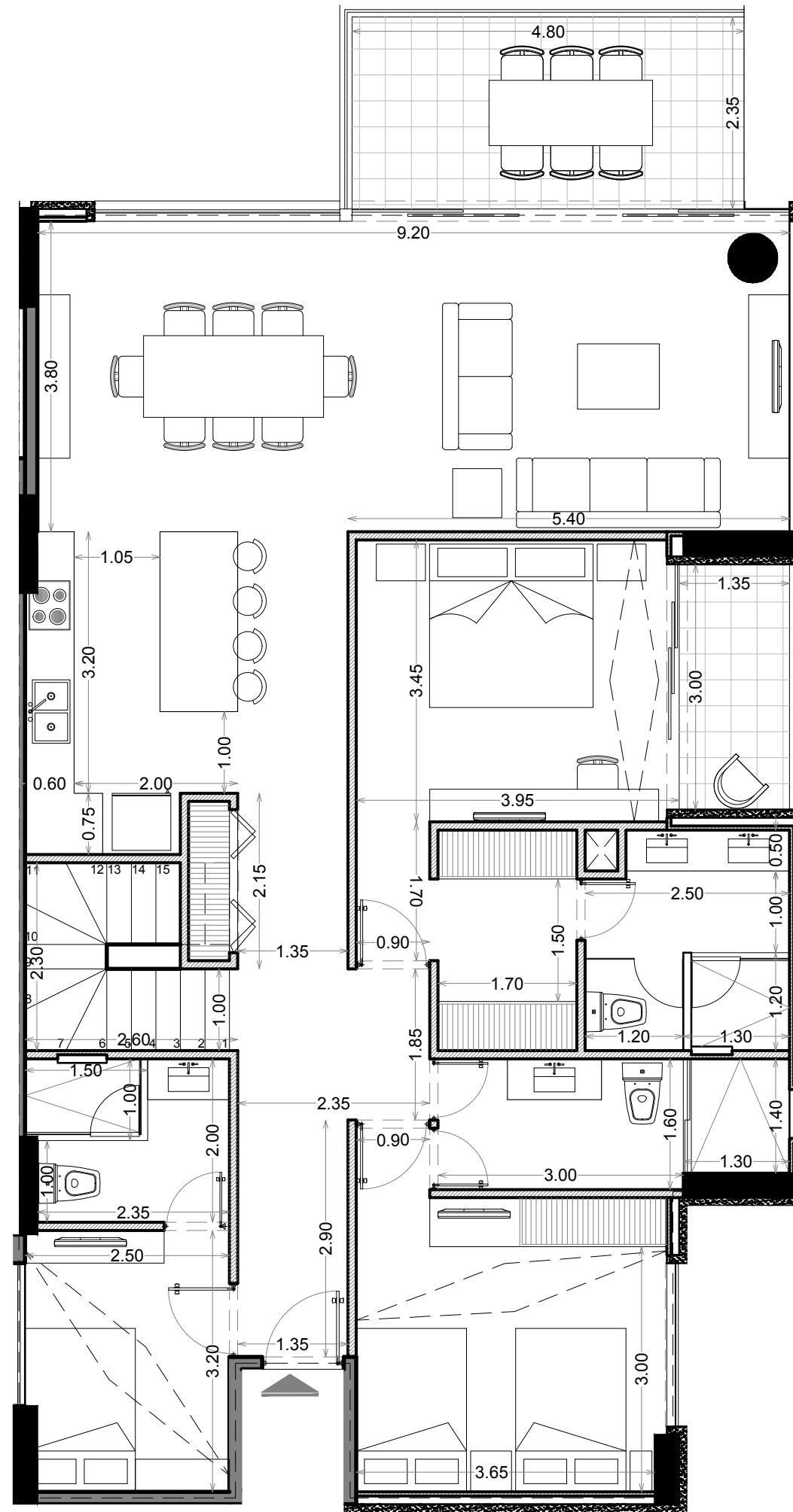
Ocean - Channel View



Marina view



# Condo Type D-PH.





# Unit Type C-PH.

● Interior Area	1738.80 ft <sup>2</sup>
● Balcony	144.02 ft <sup>2</sup>
● Sundesk	557.03 ft <sup>2</sup>
● Parking	403.64 ft <sup>2</sup>

<b>Total</b>	<b>2872.99 ft<sup>2</sup></b>
--------------	-------------------------------

● Bedrooms	4
● Bathrooms	4.5
● Den	1
● Parking spots	3



Bonanza Tower  
Ocean view

Ocean - Channel View



Marina view



PRG. YUC.

# Villas.







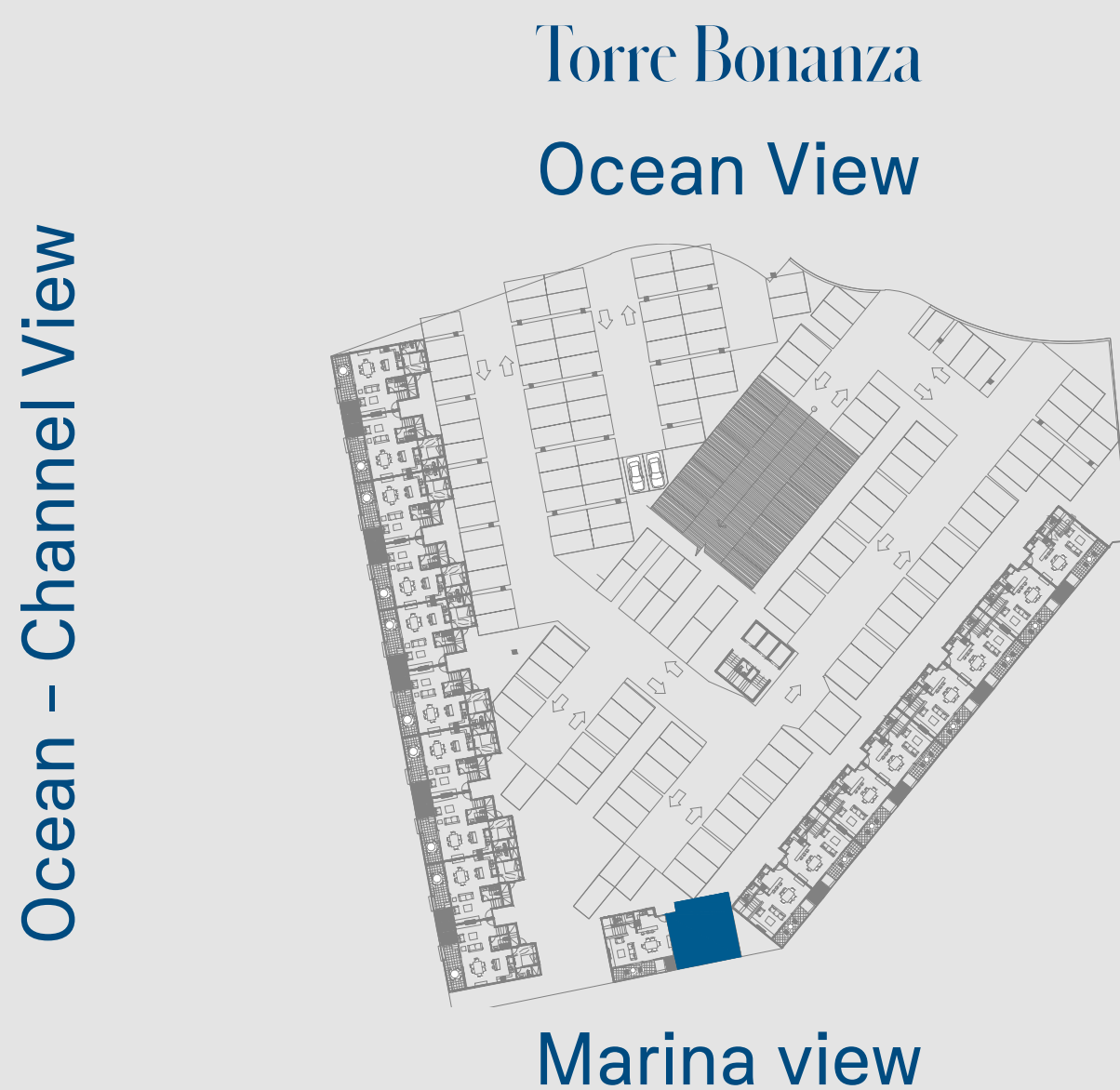


# Villas A.

● Interios Area	1176.06 ft <sup>2</sup>
● Balcony	211.83 ft <sup>2</sup>
● Parking	269.09 ft <sup>2</sup>

<b>Total</b>	<b>1656.99 ft<sup>2</sup></b>
--------------	-------------------------------

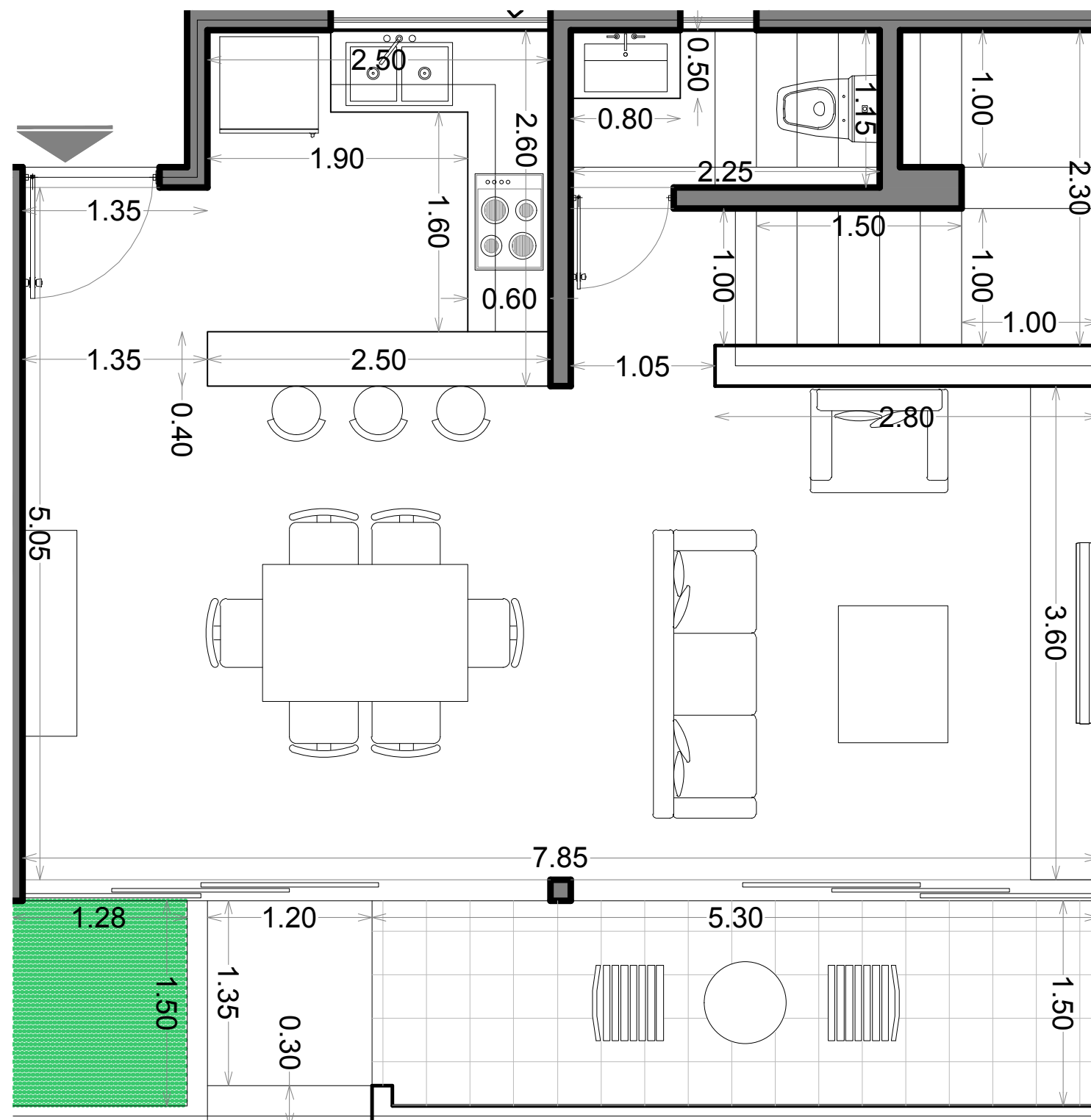
● Bedrooms	2
● Bathrooms	2.5
● Den	0
● Parking spots	2



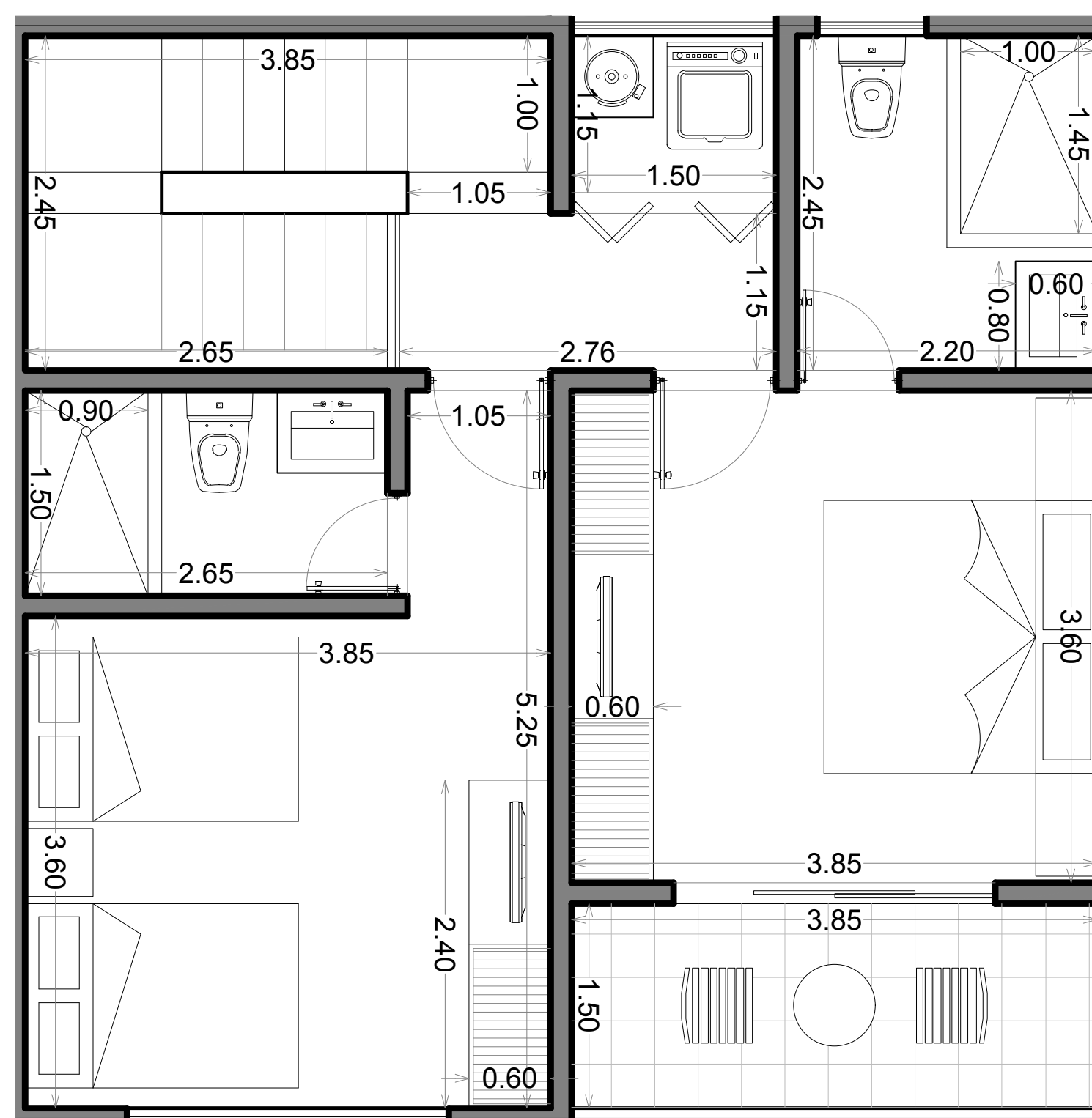


# Villas A.

## Ground Floor



## First Floor



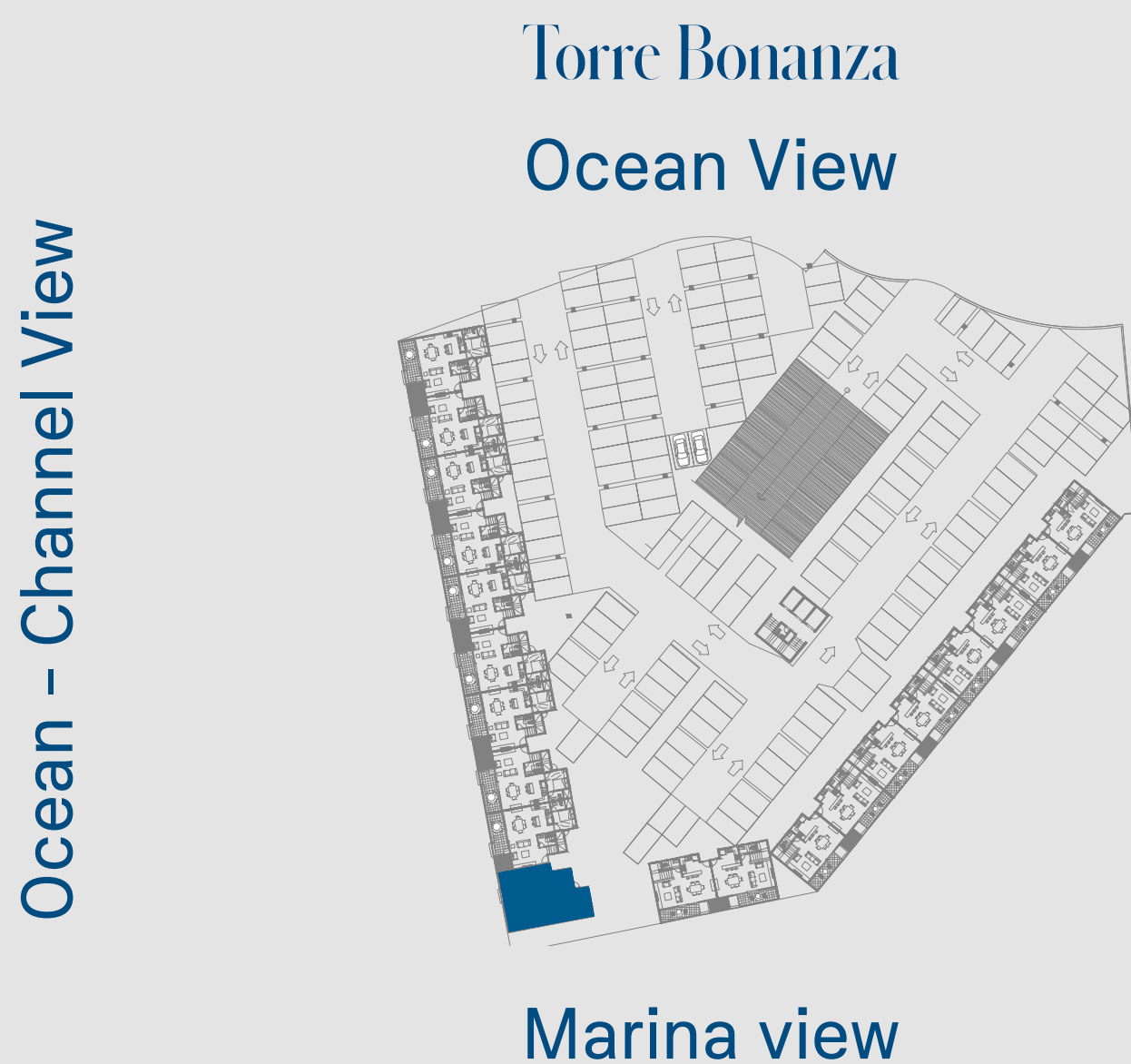


# Villas B.

• Interios Area	1410.61 ft <sup>2</sup>
• Balcony	254.88 ft <sup>2</sup>
• Parking	269.09 ft <sup>2</sup>

<b>Total</b>	<b>1934.59 ft<sup>2</sup></b>
--------------	-------------------------------

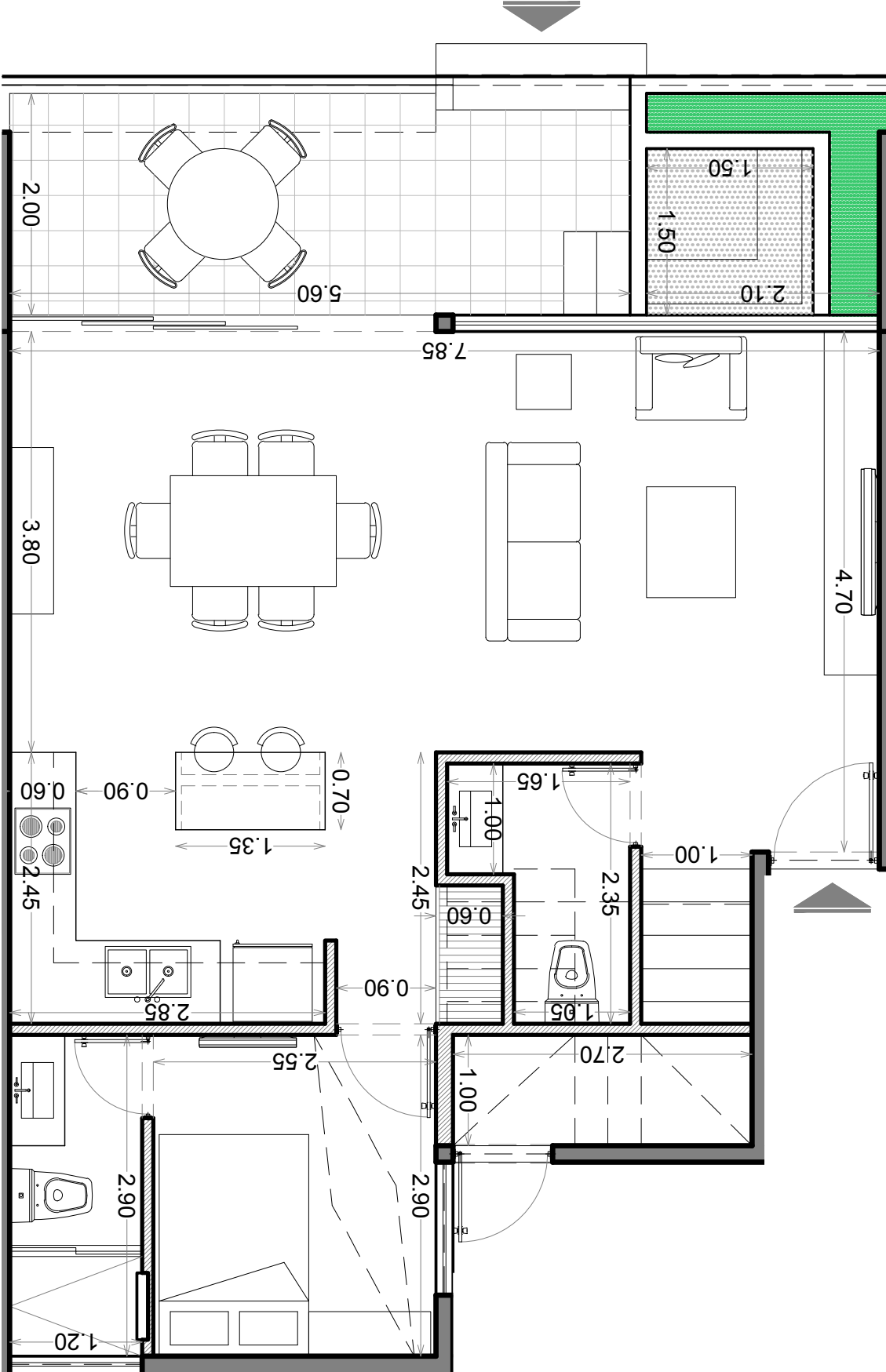
• Bedrooms	2
• Bathrooms	3.5
• Den	1
• Parking spots	2



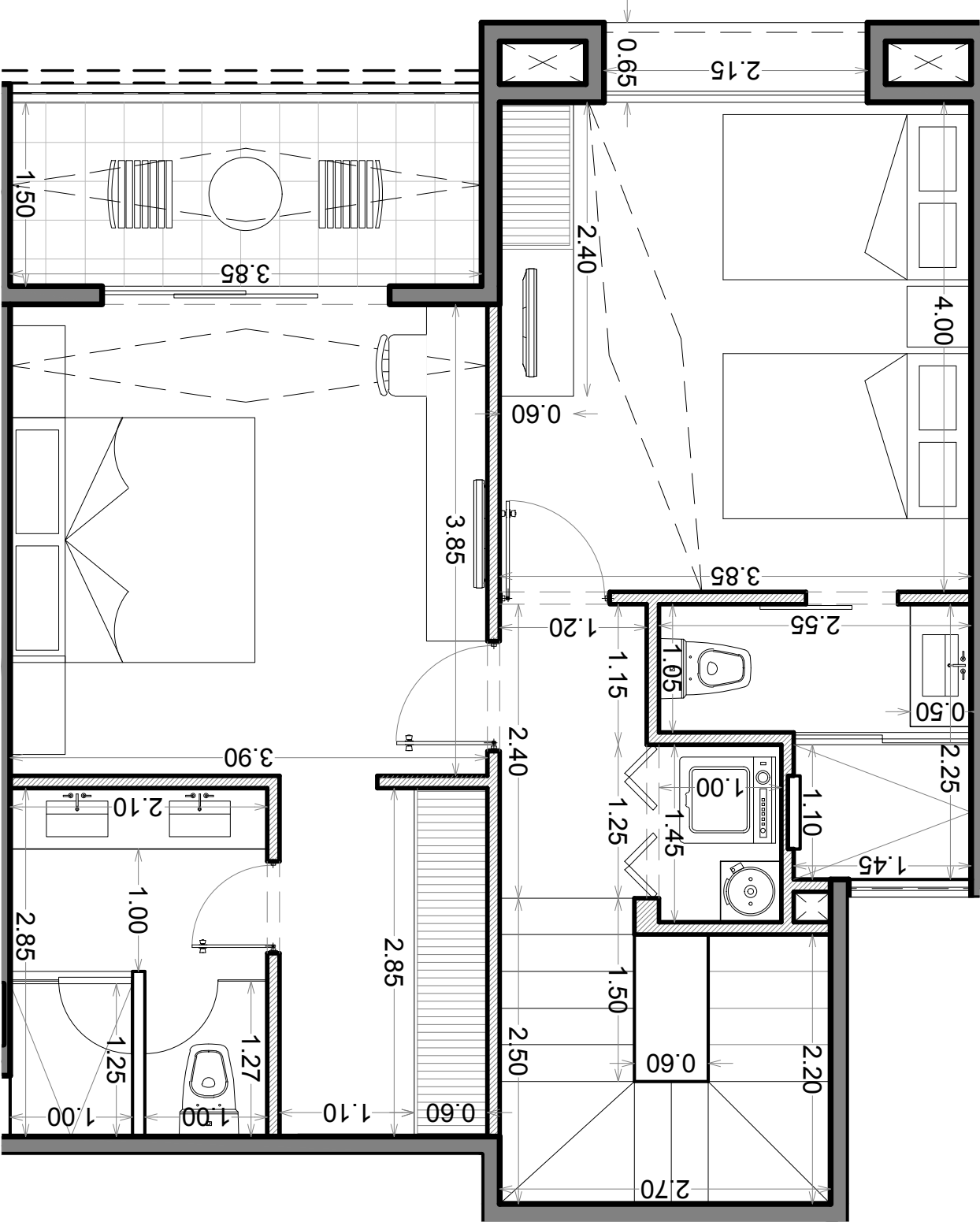


# Villas B.

## Groud Floor



## First Floor







360°  
Surrounded by water.



PRG. YUC.

# Invest in Yucatán. Invest in Progreso





Invest in  
**Yucalpetén**  
Resort Marina





# call us

**Office Tel: 9999441300**

**Cell: 9991633310**

**Cell: 9991633302**

**Email: [contacto@grupobci.com](mailto:contacto@grupobci.com)**



INMOBILIARIA

**BCI**

Acércate a los expertos.