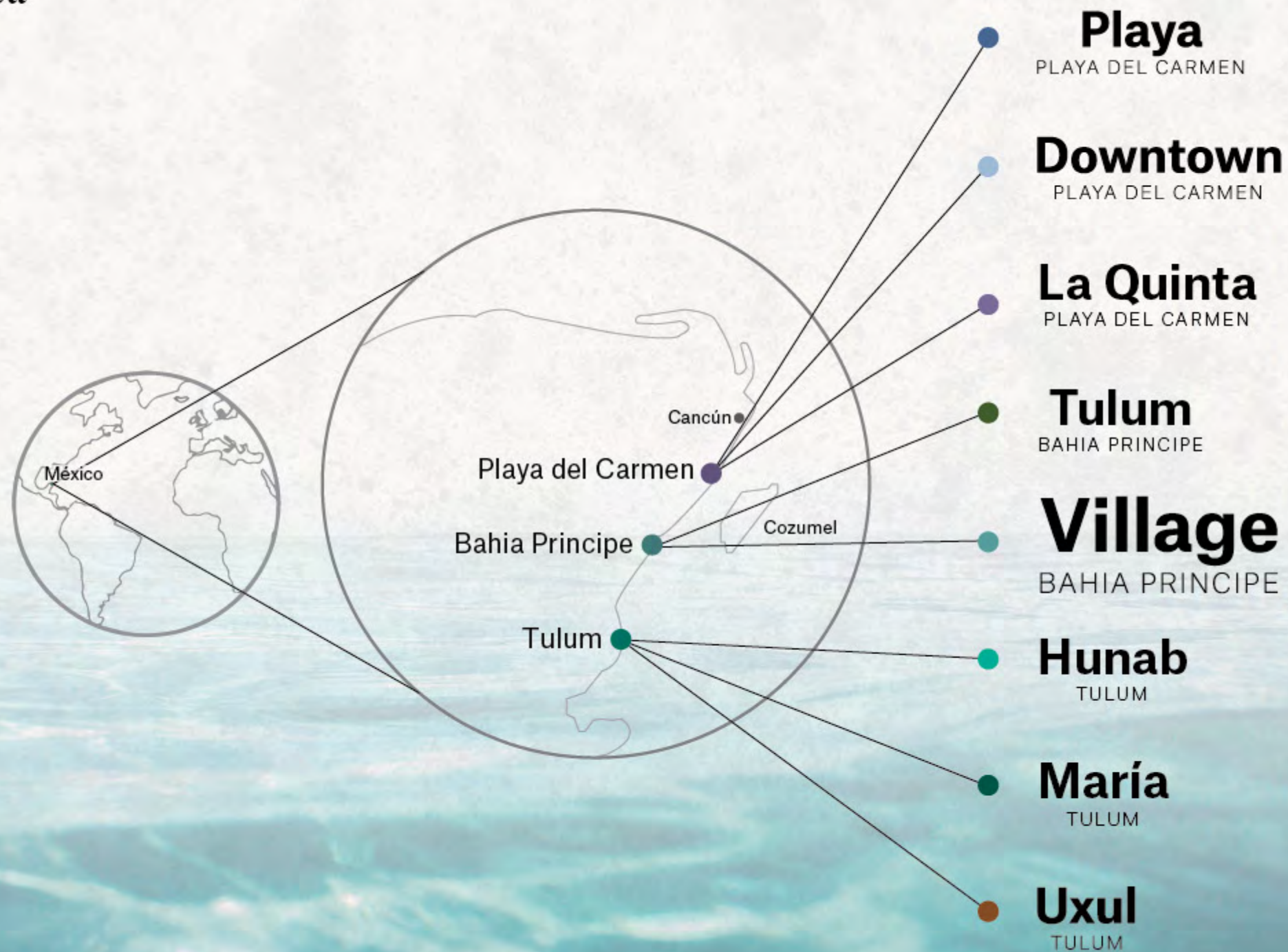




Village

BAHIA PRINCIPE

Where are we located





Village

BAHIA PRINCIPE

Fulfill
your dreams

*Bahia Principe
Residences & Golf*



Invest in an outstanding lifestyle

VILLAGE is located within the **BAHIA PRINCIPE** resort and residential complex, allowing you to enjoy their world renowned services and amenities.

*Bahia Principe
Residences & Golf*



Bahia Principe's Amenities



15 Restaurants*
7 Buffets*



21 Bars*



4 Gyms



Free transportation
throughout the complex



2 Golf courses designed
by Robert Trent Jones II



5 Pools



Sport
facilities




Spa*



Disco* &
Casino*



** Bahia Principe Benefits and Discount for Owners*



More than a holiday destination

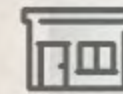
Village is an extraordinary example of *resort living* with outstanding comfort and the multiple amenities that only Anah can offer.

Anah Village is one of the most ambitious projects of our group with spectacular views of the golf course, *a wide variety of amenities including a Clubhouse.*



Village is your dream home

Surrounded by the magical splendor of the Mayan jungle with exuberant natural landscapes.



1 & 2
BEDROOM
CONDOS

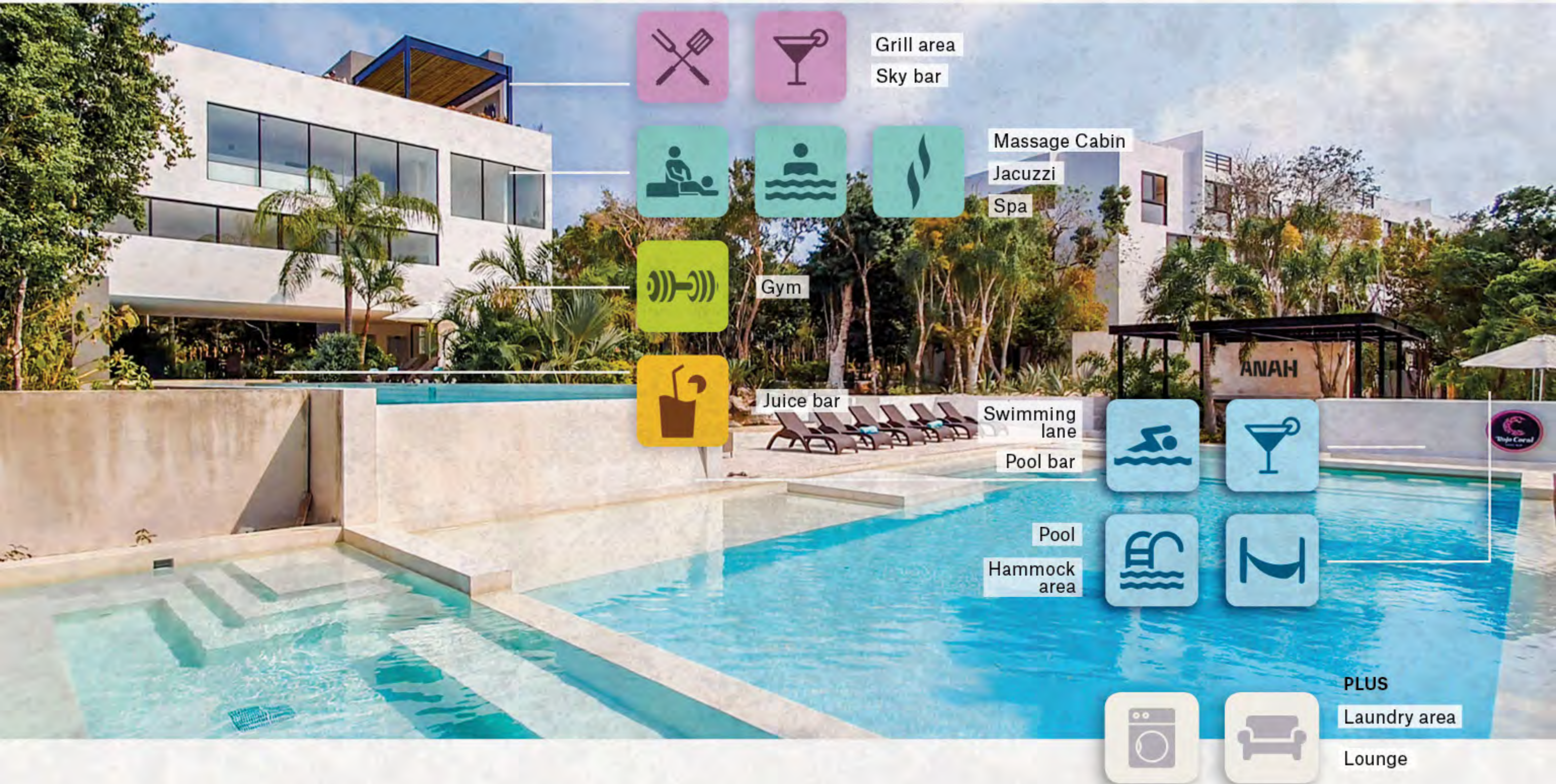


2 & 3
BEDROOM
TOWNHOUSES

FROM
675.32 sqft
TO
1,830.17 sqft

PRICES FROM
120,000 USD
TO
330,000 USD

Village's Amenities



Grill area
Sky bar



Massage Cabin
Jacuzzi
Spa



Gym



Juice bar



Swimming lane
Pool bar



Pool
Hammock area



PLUS
Laundry area
Lounge

Services*



Concierge



24/7 Security



Vacation rental program



Condo-hotel service

*Additional charges may apply

All artist's rendering for illustrative purposes only







Master Plan



LUXE
Ground floor



678.12 to 684.69 sqft
Condo

68.78 sqft
Terrace

746.90 to 753.47 sqft
Total


175,000 USD

Fully
furnished
equipped
decorated

Roll over the
floor plan  

VERSATILE SPACE
Bedroom / Living Room



Entrance 



All artist's rendering for illustrative purposes only

LUXE
Midfloor



678.12 to 684.69 sqft
Condo

68.78 sqft
Terrace

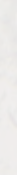
746.90 to 753.47 sqft
Total


165,000 USD

Fully
furnished
equipped
decorated

Roll over the
floor plan  

VERSATILE SPACE
Bedroom / Living Room



Entrance 



All artist's rendering for illustrative purposes only

LUXE
Penthouse - Roof

746.90 sqft
Penthouse

678.12 sqft
Roof Garden

1,425.02 sqft
Total

206,925 USD

Fully
furnished
equipped
decorated



The design, measurements, finishes and other items could have small and non-substantial modifications in case it is needed to adjust the final project.



All artist's rendering for illustrative purposes only

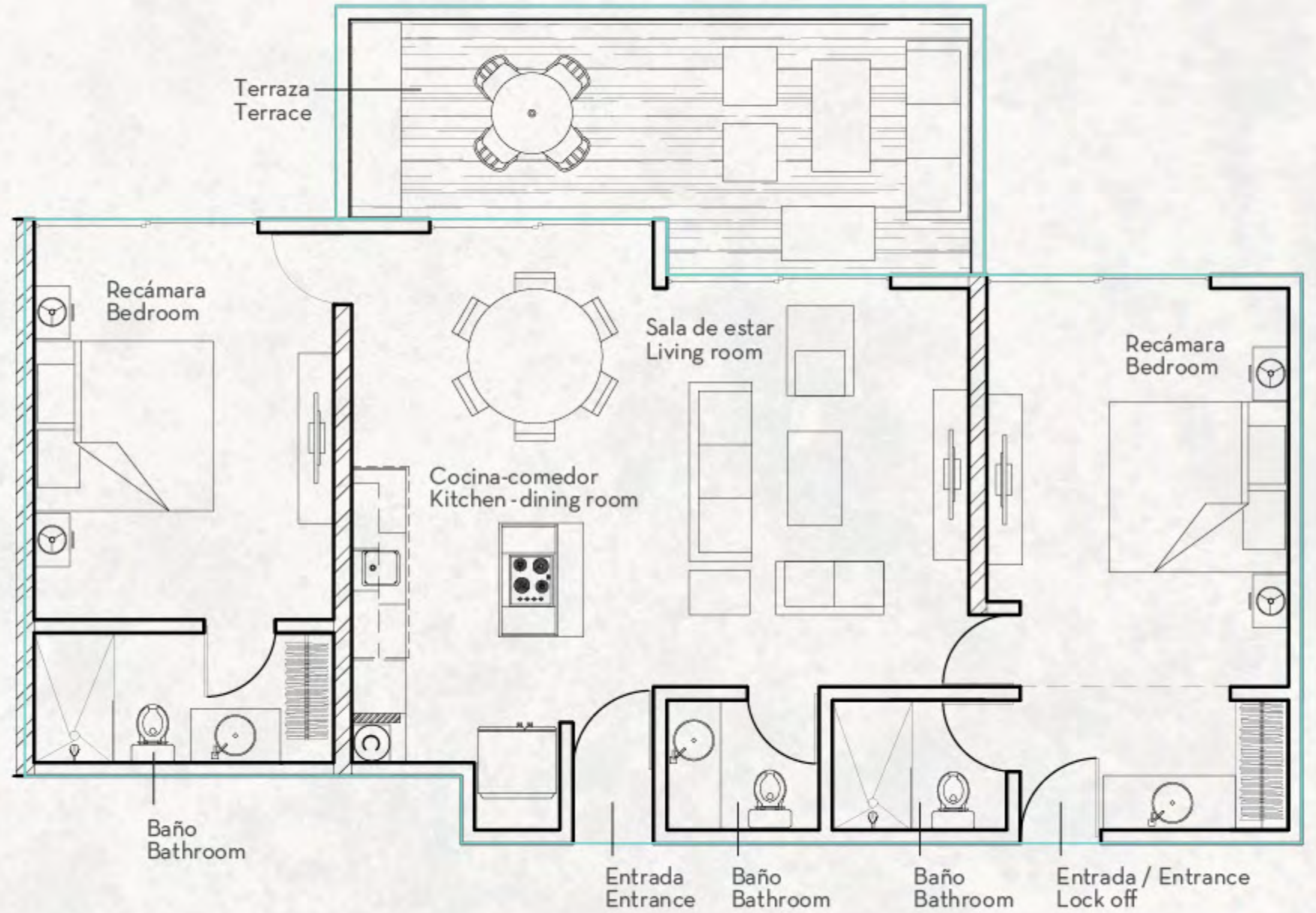
TUCÁN / COLIBRÍ
Garden Floor
2 Bedrooms

979.08 to 984.25 sqft
Condo

209.46 sqft
Terrace

1,188.54 to 1,193.71 sqft
Total

220,000 USD



The design, measurements, finishes and other items could have small and non-substantial modifications in case it is needed to adjust the final project.



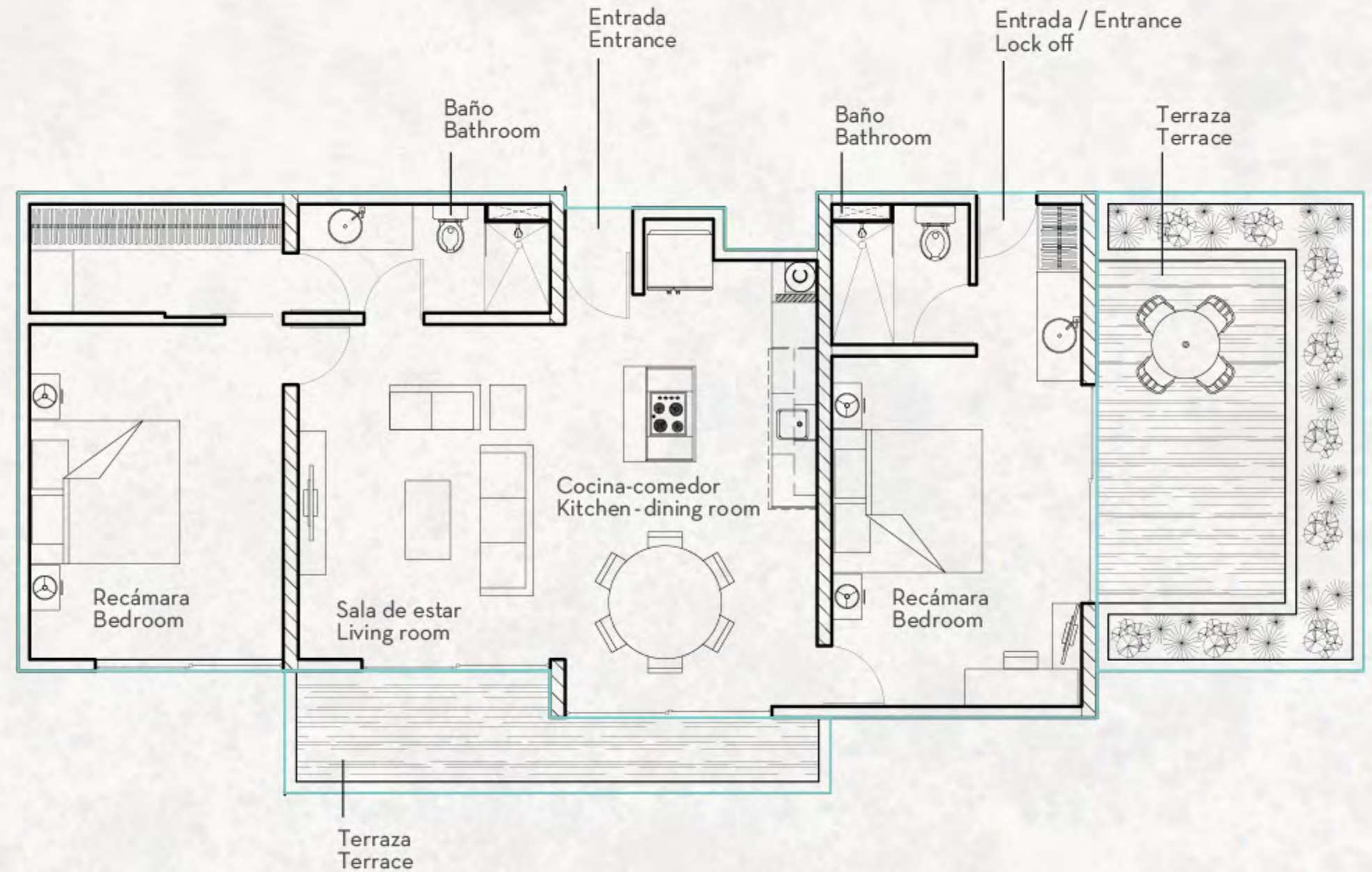
TUCÁN / COLIBRÍ
Midfloor
2 Bedrooms

992.32 to 1,014.92 sqft
Condo

300.09 to 344.12 sqft
Terrace

1,292.41 to 1,359.04 sqft
Total

206,000 USD



The design, measurements, finishes and other items could have small and non-substantial modifications in case it is needed to adjust the final project.



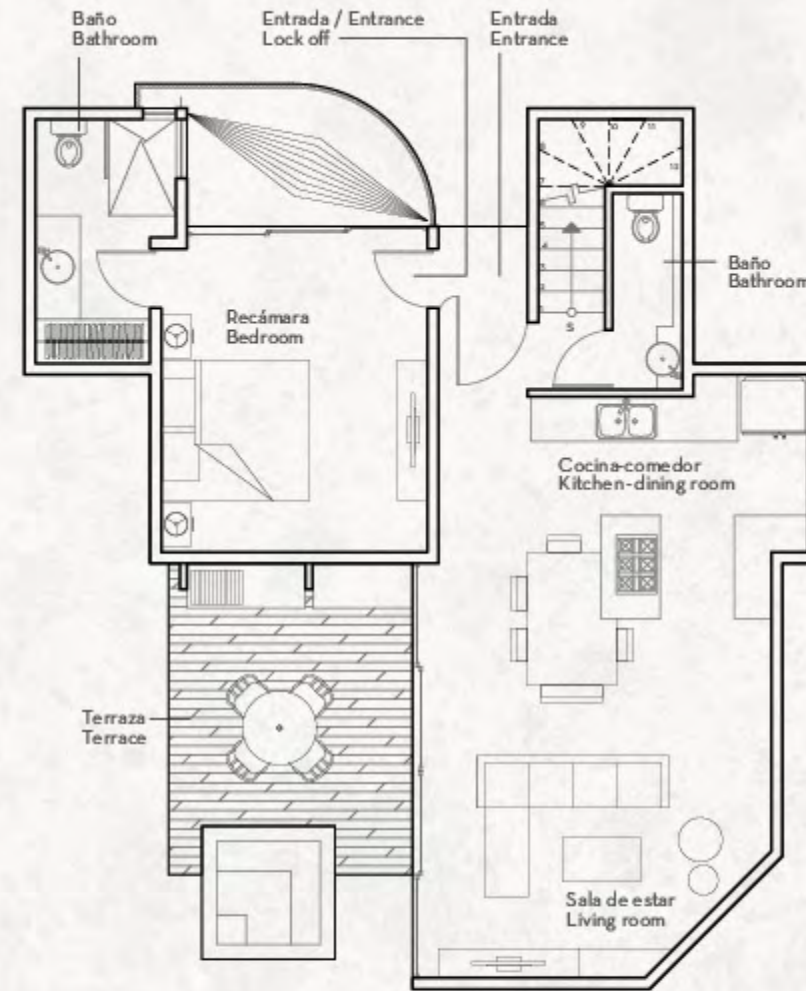
TOWNHOME *2 Bedrooms*

1,264.32 sqft
Townhome

565.85 sqft
Terrace

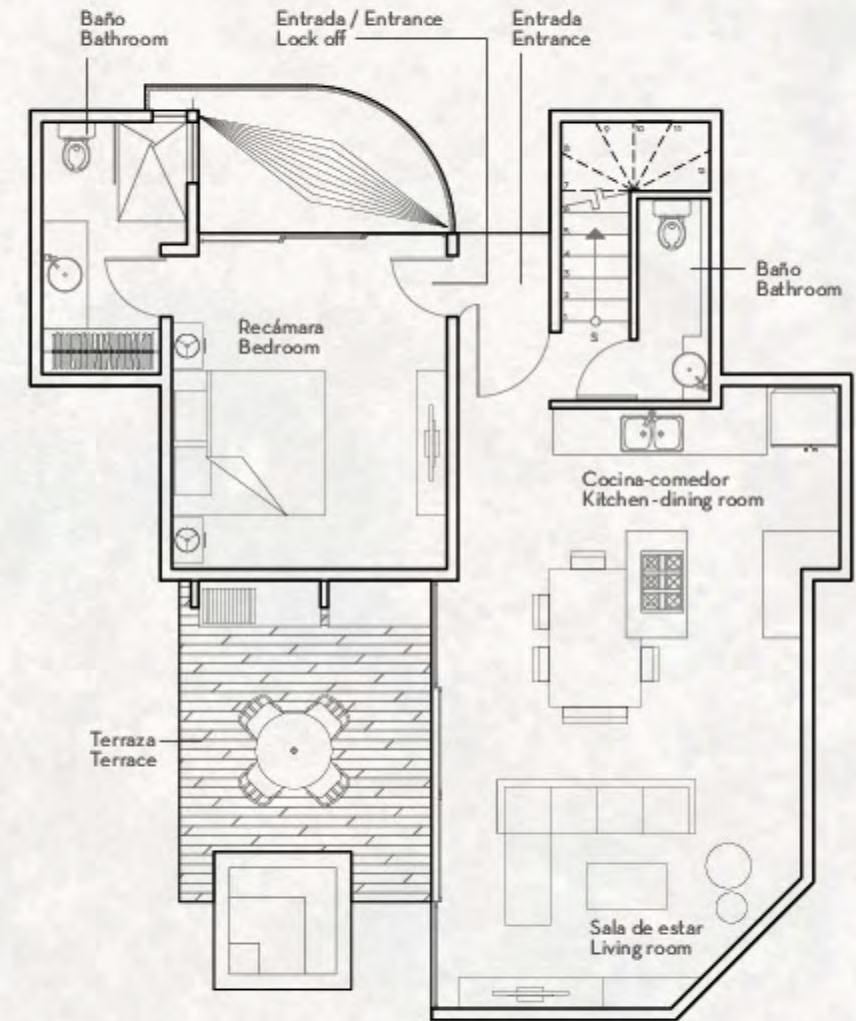
1,830.17 sqft
Total

295,000 USD



PLANTA BAJA

Ground Floor



PLANTA BAJA

Roof



All artist's rendering for illustrative purposes only

TOWNHOME

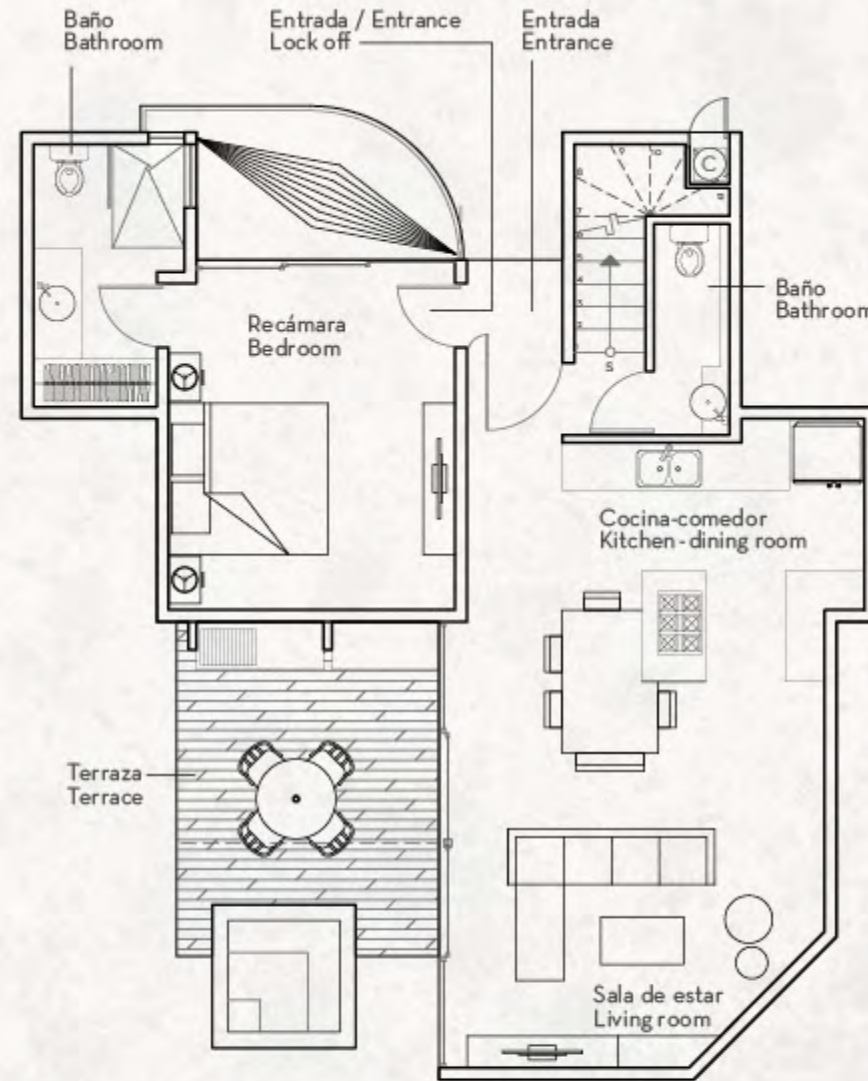
3 Bedrooms

1,493.06 sqft
Townhome

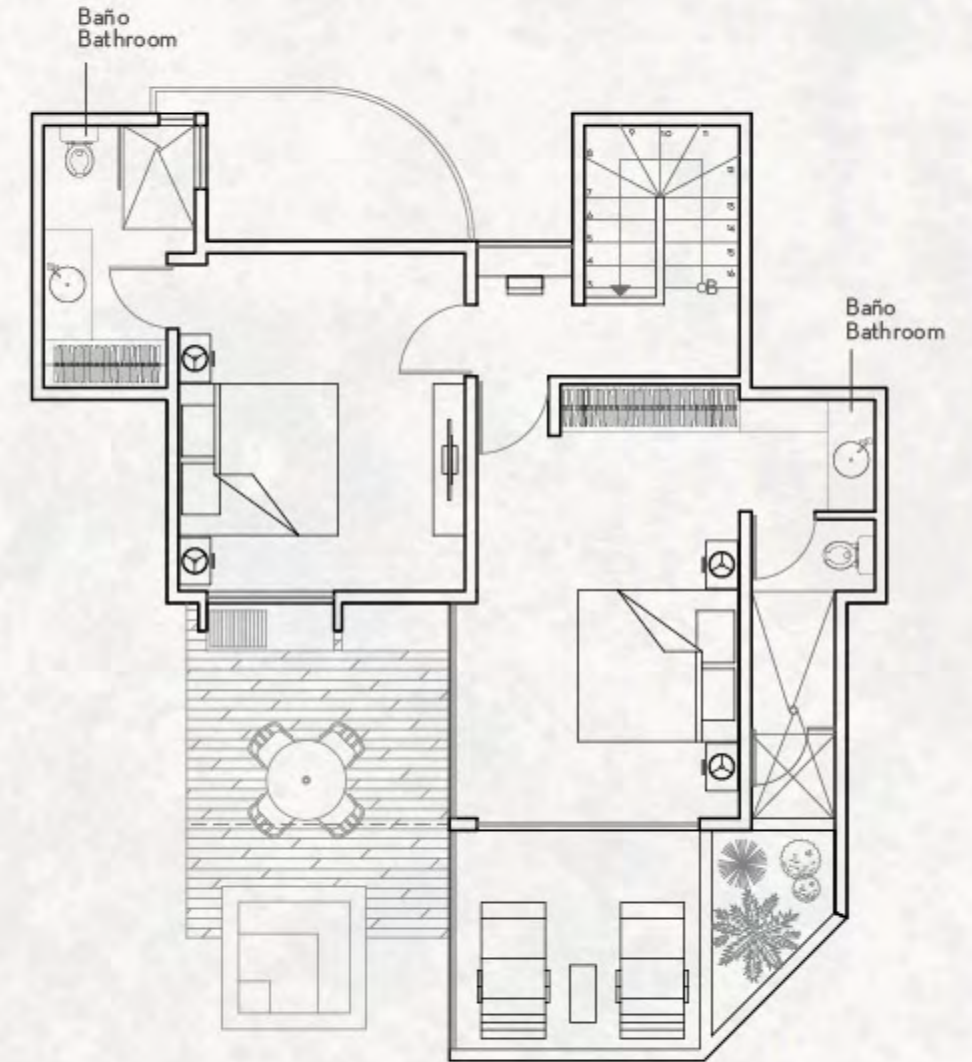
337.11 sqft
Terrace

1,830.17 sqft
Total

330,000 USD



Ground Floor



Roof





Binder[®]
INMOBILIARIA