



**HUNAB**  
RESIDENCES

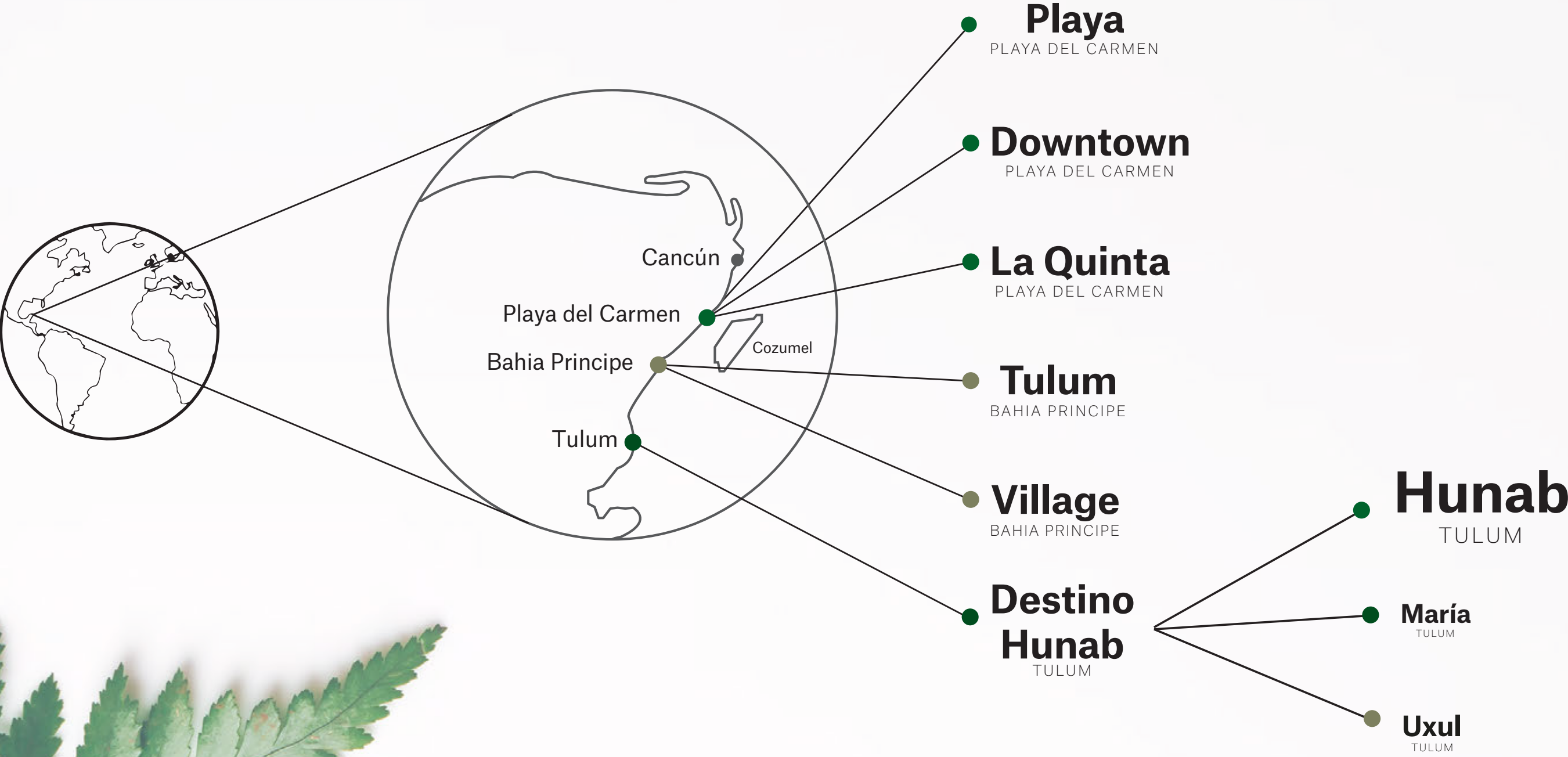


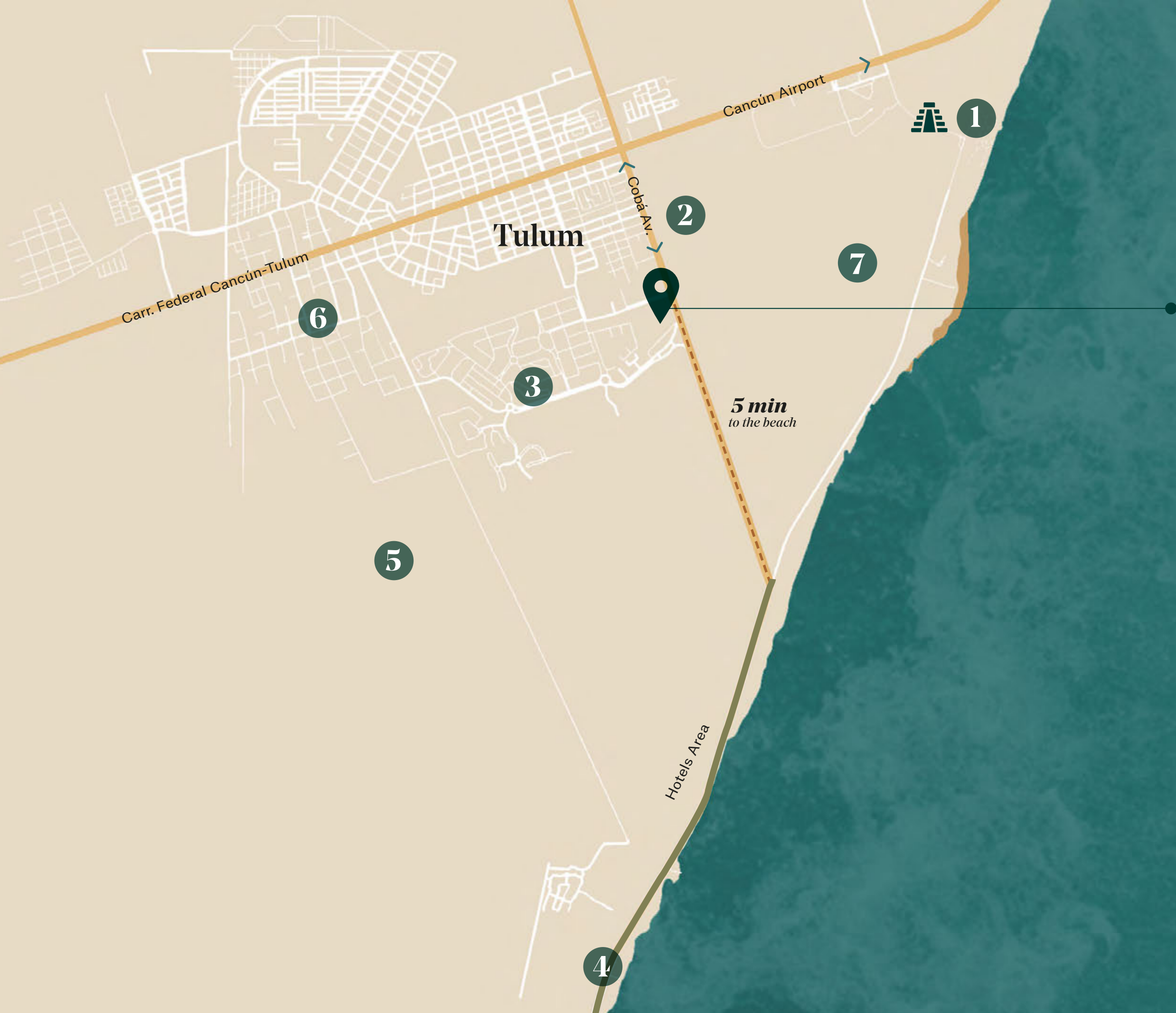
\* All images contained in this brochure are for illustrative purposes only.



*Don't call it dream,  
call it home*

# Location





# *Destino Hunab*

**Hunab**  
TULUM

1. Tulum's Archaeological Site
2. Chedraui
3. Aldea Zamá
4. Ziggy Beach Club
5. Región 15
6. La Veleta
7. Conservation Area

# Location



# Destino Hunab



## HUNAB RESIDENCES

A la playa



Av. Cobá



A Tulum



HUNAB  
LIFESTYLE CENTER

Uxul  
TULUM

hotel  
INDIGO

EL PASEO  
DE LOS  
Murallistas

María  
TULUM

\* All images contained in this brochure are for illustrative purposes only.

# HUNAB

LIFESTYLE CENTER



\* A todas as imagens apresentadas não se trata de uma fotografia real, mas sim de uma representação artística.





\* All images contained in this brochure are for illustrative purposes only.



# Amenities



Pool



Gym



Organic garden



Hammocks Area



Restaurant & Bar



Parking



Grill

\* All images contained in this brochure are for illustrative purposes only.

# Hammocks Area



\* All images contained in this brochure are for illustrative purposes only.

# Grill



\* All images contained in this brochure are for illustrative purposes only.

# Services



Elevator



Concierge



Vacation  
Rentals



Transportation  
to Ziggy



Condo-hotel



Security  
24/7



# Ziggy's Beach Club

Official Beach Club of  
Destino Hunab

YOGA PALAPA ↗



Restaurant



Bar



Beach

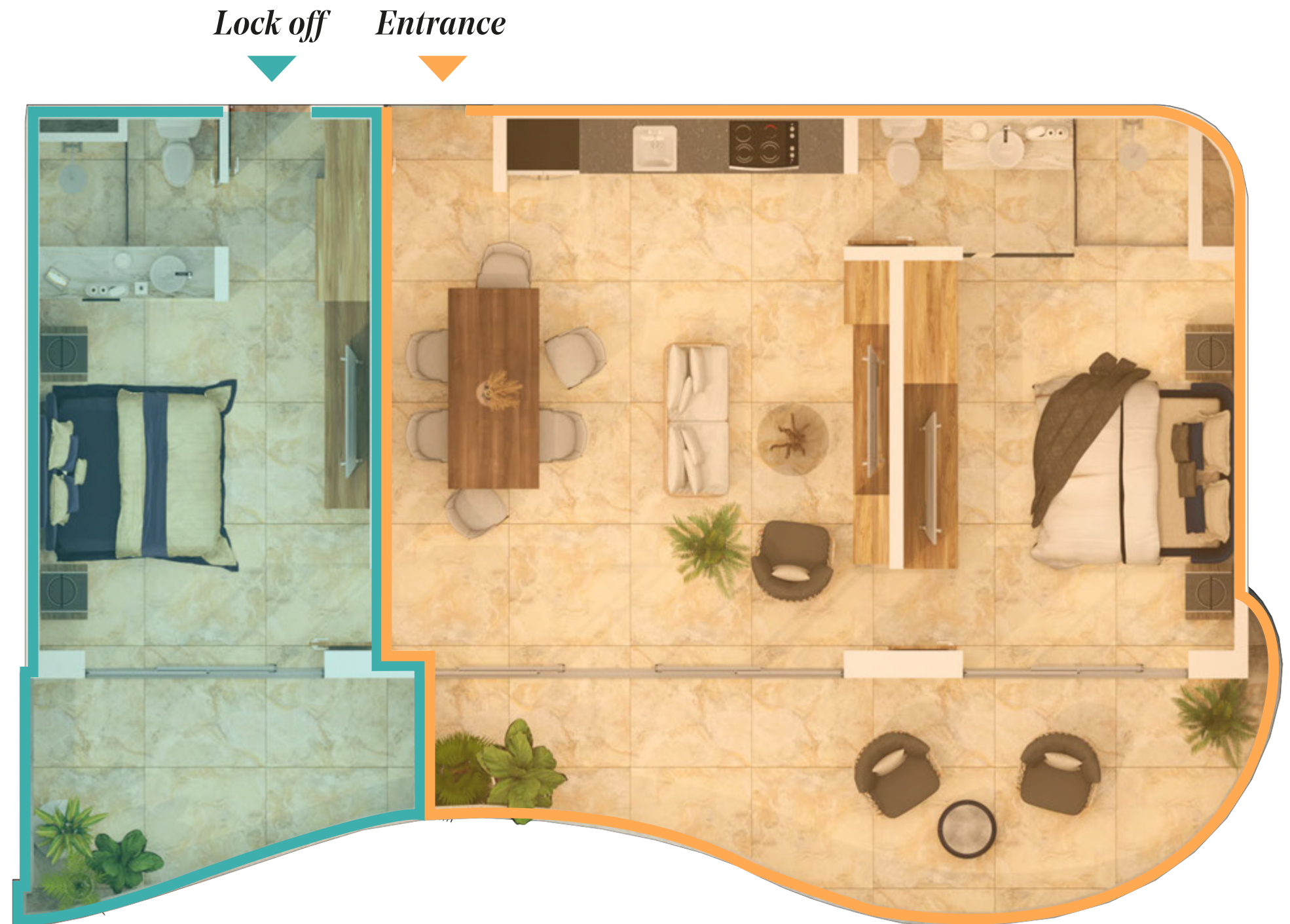


Transportation

# Maximize your space!

Just like nature, your space is creative and generous.

With the **Lock Off** system you can comfortably enjoy vacations with family and friends while increasing your income.



## LOCK OFF SYSTEM

Enjoy your private space while increasing your income by renting other sections of your apartment.

► **1 hotel room**

► **1 bedroom unit**





Lock off



Entrance



# Garden

Prices starting at  
**277,500 USD**

*Apartment*

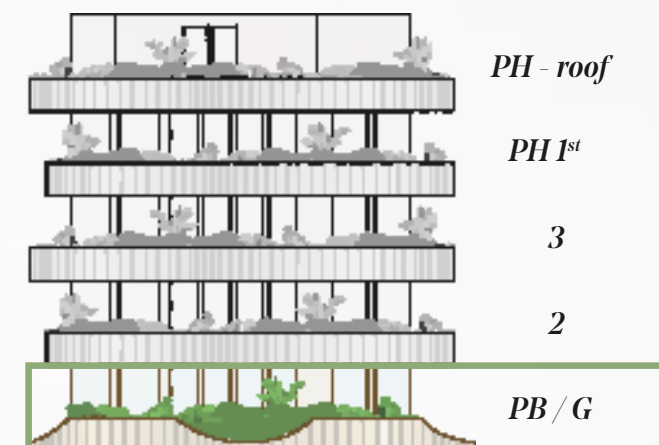
898.78 sqft

*Terrace*

312.15 sqft

*Total*

1,210.93 sqft



Lock off

Entrance

# Midfloor

From 265,000  
to 285,000 USD



*Apartment*

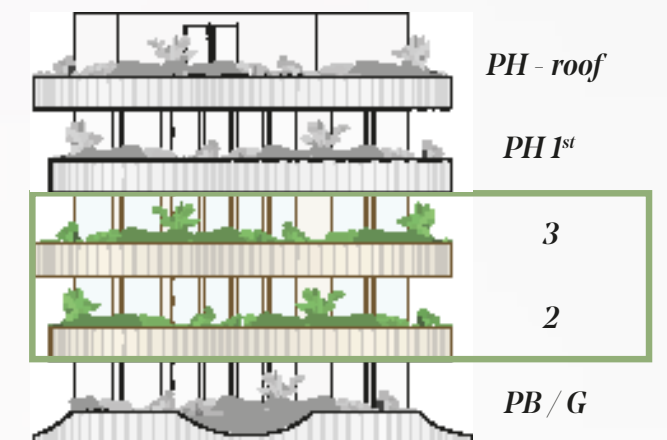
898.78 sqft

*Terrace\**

107.63 sqft a 322.91 sqft

*Total*

1,006.41 a 1221.69 sqft



Entrance

Lock off

# Penthouse

Price 404,200 USD



# 3 units in 1

*Apartment*

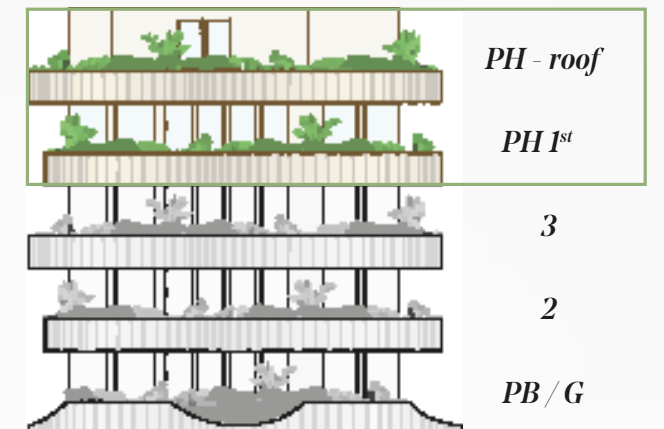
898.78 sqft

*Terrace\**

107.63 sqft to 322.91 sqft

*Total*

1,006.41 to 1221.69 sqft



PH - roof

PH 1<sup>st</sup>

3

2

PB / G

Lock off



# PH Roof

*Apartment*

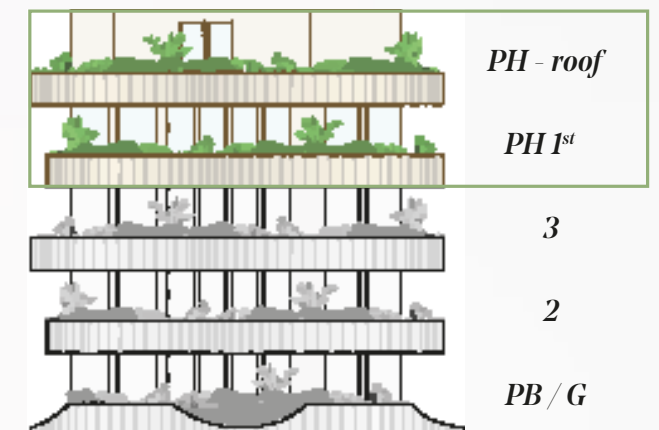
365.97 sqft

*Terrace\**

645.83 sqft

*Total*

1,011.80 sqft





# Garden

# Kitchen & Living Room



# Roof



\* All images contained in this brochure are for illustrative purposes only.

# Unique design & comfortable spaces

*Floor-to-ceiling  
windows*

for greater amplitude

Wooden cabinets and doors,  
*poplar veneer*





*Tempered glass*

Furnished



Decorated



Equipped

*Cream maya  
marble floor*

\* All images contained in this brochure are for illustrative purposes only.

# Just enjoy



Sunest Leasing + Leisure allows you to earn through the rental of your apartment. We take care of everything, you just have to enjoy.



## You decide

If you wish to be part of our Condo-hotel operation program, L+L is optional!



## You travel

We are the only one developer within the INTERVAL PLATINO program that gives you the option to exchange nights with owners from more than 80 countries.



## You choose

When you want to enjoy your unit and when you want it to keep renting. There are no annual blocks!

# Forget limitations

we work as a family with you.



\* All images contained in this brochure are for illustrative purposes only.

