

SKYLINE TULUM

LAST 2
PENTHOUSES
AND 3 RETAIL
SPACES

**2 BR Penthouses with Private Rooftop,
Pool & Solarium.
Each Penthouse is a Triplex/Townhouse
for Maximum Privacy.**

WWW.SKYLINETULUM.COM



FROM MEXICO 998-158-0891 FROM OUTSIDE MEXICO +52 1 998-158-0891

Renderings/images are for demonstrative purposes only

Why Skyline Tulum?

The Design



- Small building - just 5 condos, quiet and exclusive, “a boutique building”.
- All apartments are 3 floors Penthouses with separation between the entertaining (gathering area), sleeping area and rooftop.
- Privacy - each condo has a private rooftop with a nice size private pool .

Prime Location



- In the CENTER of the Aldea Zama, the newest and most modern neighborhood of Tulum.
- Shopping and entertaining area, with the restaurants and fancy stores. No car needed, ideal for vacationing.

The Finishing

- High standard European design that is built by an experienced construction company.



Easy to rent and Higher ROI



- The combination of Central location, Extensive privacy, Luxurious design and High-end finishes maximizes the occupancy rate and provides owners with an higher return on investment (up to 15% a year).

The Location



Skyline Tulum is nestled at the ‘heart of paradise’ in the boutique neighborhood of Aldea Zama, Riviera Maya, Mexico – the emerging seaside destination community of Tulum.

The Project



Skyline Tulum is a result of the collaboration between an Italian architectural firm and an American-owned construction company. The combination of exceptional European contemporary design and the precision of American engineering and construction promises to result in an extraordinary project like none other.

Apartments



Renderings/images are for demonstrative purposes only

#1

OPEN



Interior Area: 84.66 m² / 911.27 ft²
Balconies: 4.70 m² / 5.59 ft²
Rooftop: 33.95 m² / 365.43 ft²
Total Space: 123.31 m² / 1282.29 ft²

Three floors apartment with living room, kitchen, dining room, laundry, 2 bedrooms, 2.5 bathrooms, balconies, pool and rooftop.

DEPARTMENT 1

Description: Department in three floors with living room, kitchen, dining room, laundry, two bedrooms, two bathrooms, wc, balconies, pool and rooftop.

Inside Surface: 84.66 m² Balconies: 4.70 m² Rooftop: 33.95 m²

Scale: 1: 100
 Dimensions: meters
 Location: 1st Floor/2nd Floor/Rooftop



#4

OPEN



Interior Area: 69.97 m² / 753.15 ft²
Balconies: 5.43 m² / 58.44 ft²
Rooftop: 23.32 m² / 251.01 ft²
Total Space: 98.72 m² / 1062.6 ft²

Three floors apartment with living room, kitchen, dining room, laundry, two bedrooms, 2.5 bathrooms, balconies, pool and rooftop.

DEPARTMENT 4

Description: Department in three floors with living room, kitchen, dining room, laundry, two bedrooms, two bathrooms, wc, balconies, pool and rooftop.

Scale: 1: 100

Dimensions: meters

Location: 1st Floor/2nd Floor/Rooftop



Inside Surface: 69.97 m²

Balconies: 5.43 m²

Rooftop: 23.32 m²



Renderings/images are for demonstrative purposes only

Commercial Space



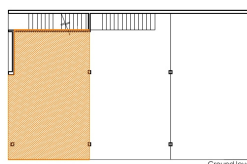
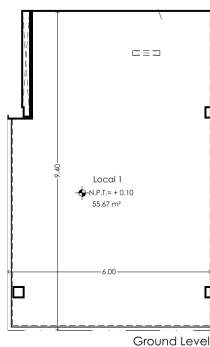
Renderings/images are for demonstrative purposes only

5 m / 16.4 ft ceiling height.

Allows stores, food establishments to build a Gallery or even 2nd floor inside the space and this way to almost double the usable space.



#1



OPEN

Space: 55.67 m² / 599.22 ft²
Ground Level

LOCAL 1

Description: Commercial Local.

Inside Surface: 55.67 m²

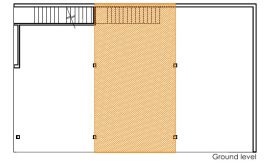
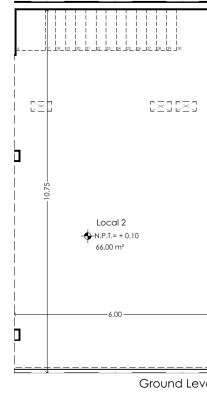
Scale: 1: 100
Dimensions: meters
Location: Ground Level



#2

OPEN

**Space: 66.00 m² / 710.41 ft²
Ground Level**



LOCAL 2

Description: Commercial Local.

Inside Surface: 66.00 m²

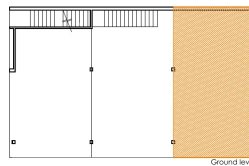
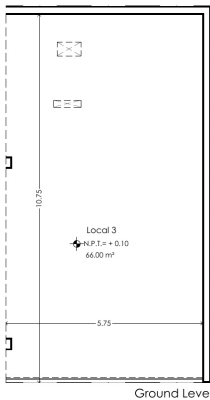
Scale: 1: 100
Dimensions: meters
Location: Ground Level



#3

OPEN

**Space: 66.00 m² / 710.41 ft²
Ground Level**



LOCAL 3

Description: Commercial Local.

Inside Surface: 66.00 m²

Scale: 1: 100
Dimensions: meters
Location: Ground Level



Gallery





The Team



Eli Koren
CEO

Eli has extensive real estate development experience on an international scale. He also earned a MBA degree in financial management. During the years, Eli has been involved in large-scale, highly successful construction projects in Israel, US and Mexico. So you can sit back, relax and be assured that you are in good hands and your property will be delivered as promised and on time.



Sandro Bortot
Architect

Sandro is a 2005 graduate of the prestigious school of Architecture in Venice, Italy. He has over 15 years of experience in architecture, design and construction management. He has designed and developed condos, hotels, commercial spaces and private residences since making Playa Del Carmen his home in 2011.



Grace Collins
Sales Manager

Grace Collins with years of real estate sales experience mainly in the Riviera Maya region. She is a licensed real estate professional and possesses a deep knowledge of the Mexican real estate laws and rules.

Her professionalism and on top the commitment to 100% customers satisfaction promise Skyline residents a full and accurate information with a fast closing process.

Contact Us



Skyline Tulum

MZ 26, LT 137, C ITZAMNA, Aldea Zama,
77780 Tulum, Q.R. Mexico

Tel:

From Mexico **998-158-0891**

From outside Mexico **+52 1 998-158-0891**

skylinetulum@gmail.com

www.SkylineTulum.com