

THE
PANORAMIC

A 360 EXPERIENCE



We are the creators of **Central Park** and **The Highline**. Developments of the highest quality and highest Return on Investment in all of the Riviera Maya. Thanks to this, Los Amigos is the leader in vacation rental, and not only said by us, but by more than 1500 five star reviews of satisfied guests.

Our previous two developments have already sold out, and now we present to you our newest investment opportunity, **The Panoramic Tulum**

*Somos los creadores de **Central Park** y **The Highline** los desarrollos de la más alta calidad y con el Retorno Sobre Inversión más alto en toda la Riviera Maya, gracias a que tenemos la mejor empresa en rentas vacacionales –“LOS AMIGOS”- y no solo lo decimos nosotros, lo dicen nuestros más de (1,500) mil quinientos reviews de huéspedes contentos con nuestros servicios.*

*Los dos desarrollos anteriores ya están vendidos al 100%, y ahora te presentamos la nueva máquina de inversiones **The Panoramic Tulum***



FLOOR PLANS

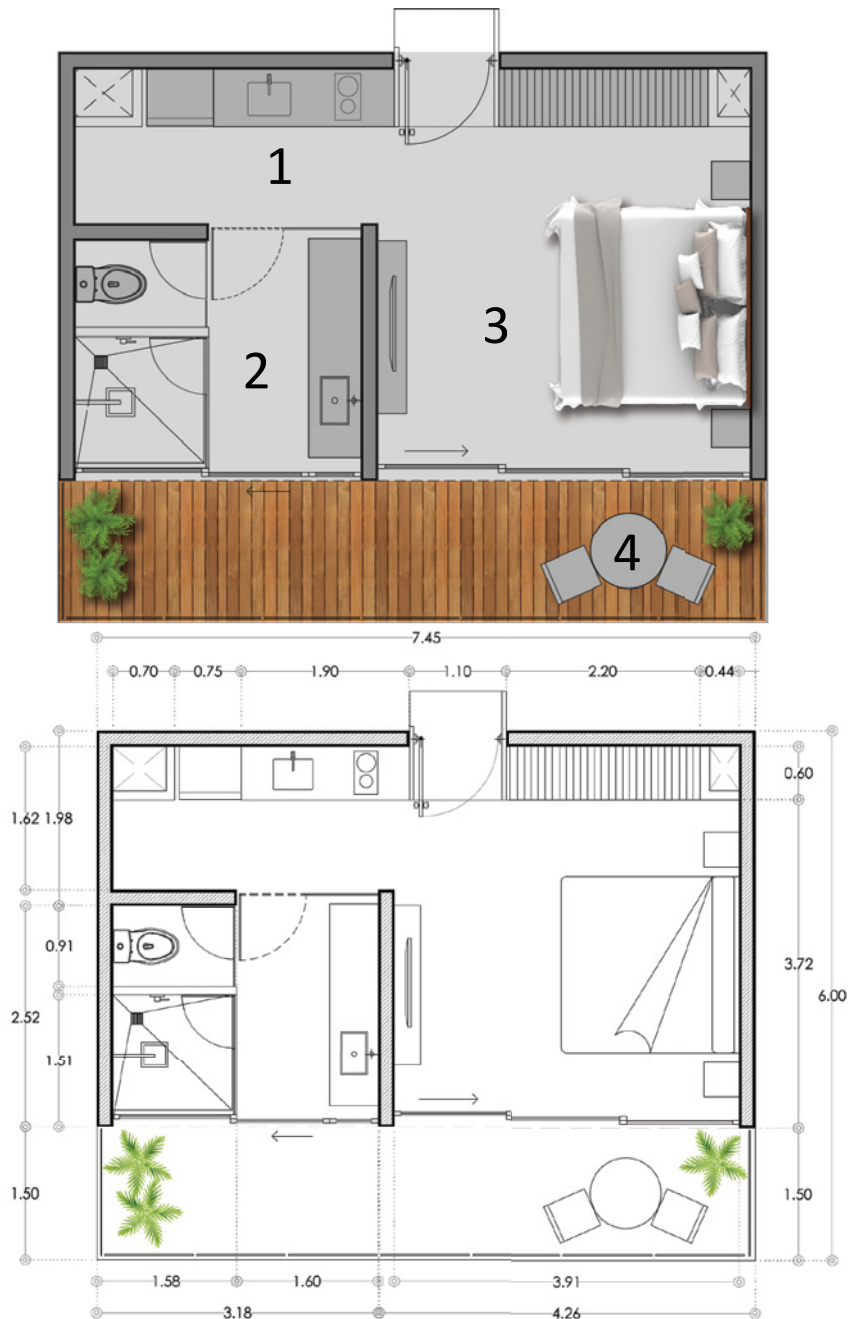
Plantas arquitectónicas



- 1. Sky view pool
- 2. Lobby
- 3. Building 1
- 4. Building 2
- 5. Yoga loft
- 6. Building 3
- 7. Building 4
- 8. Restaurant with Terrace

Floor plan

STUDIO 33.53+11.18 =44.71 Sq. meters



THE PANORAMIC

Studio

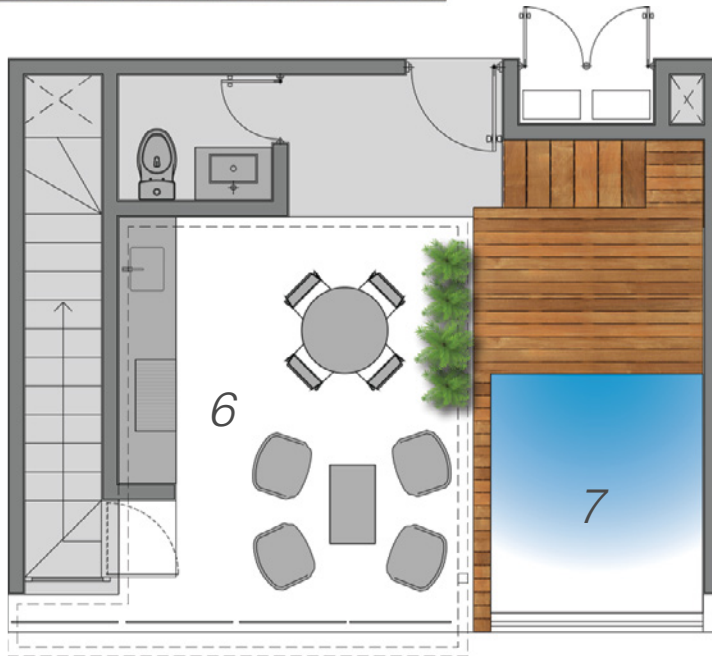
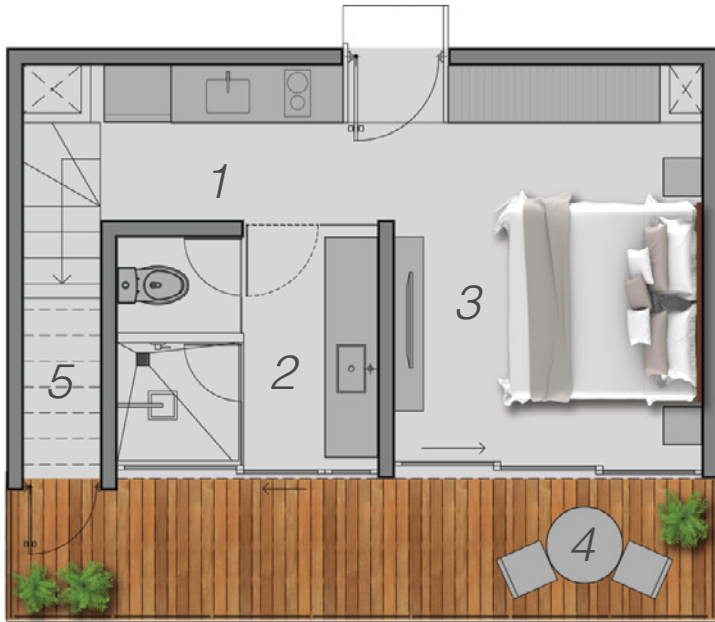
1. Kitchen
2. Bathroom
3. Bedroom
4. Terrace

* Las medidas y areas son indicativas y pueden sufrir pequeñas variaciones durante el proceso de obra



Floor plan

STUDIO PENTHOUSE 47.71+40.73 =88.44 Sq. meters



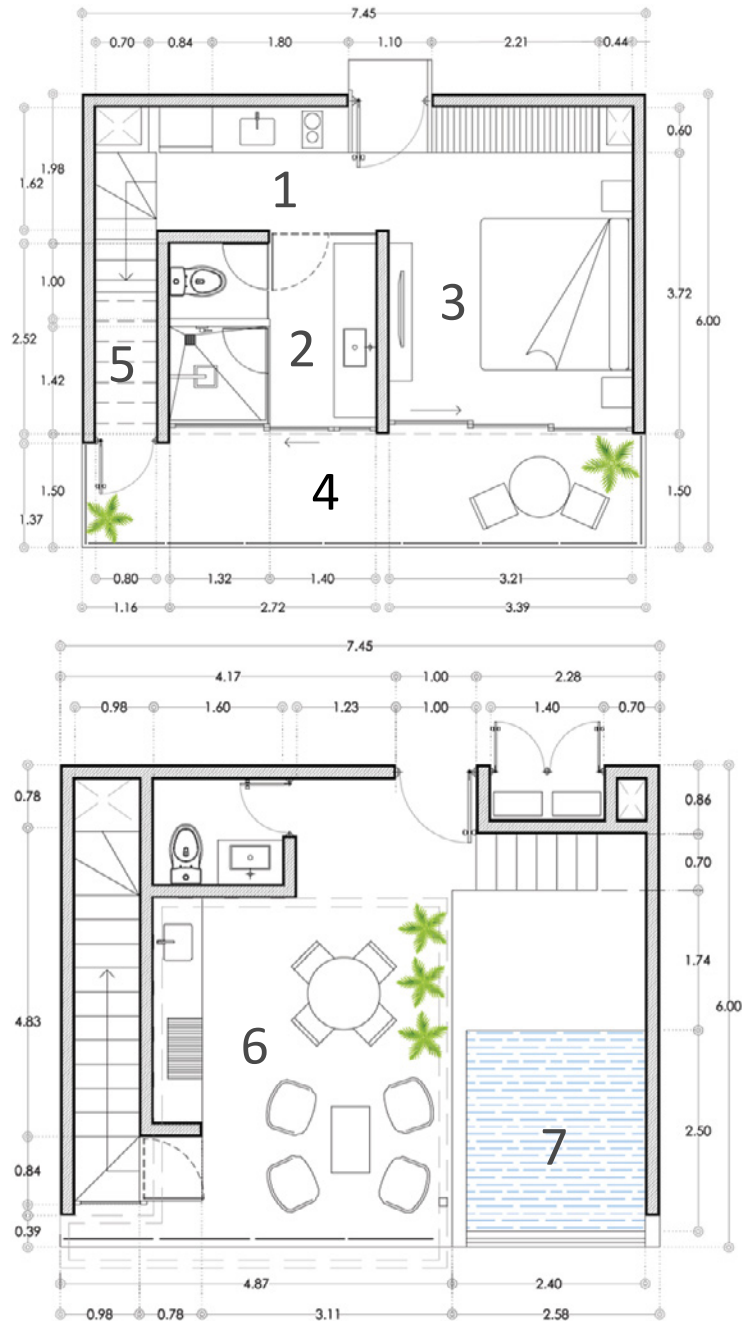
THE PANORAMIC Studio Penthouse

1. Kitchen
2. Bathroom
3. Bedroom
4. Terrace
5. Storage
6. Rooftop
7. Pool

* Las medidas y areas son indicativas y pueden sufrir pequeñas variaciones durante el proceso de obra

Floor plan

STUDIO PENTHOUSE 47.71+40.73 =88.44 Sq. meters



THE PANORAMIC Studio Penthouse

1. Kitchen
2. Bathroom
3. Bedroom
4. Terrace
5. Storage
6. Rooftop
7. Pool

* Las medidas y areas son indicativas y pueden sufrir pequeñas variaciones durante el proceso de obra



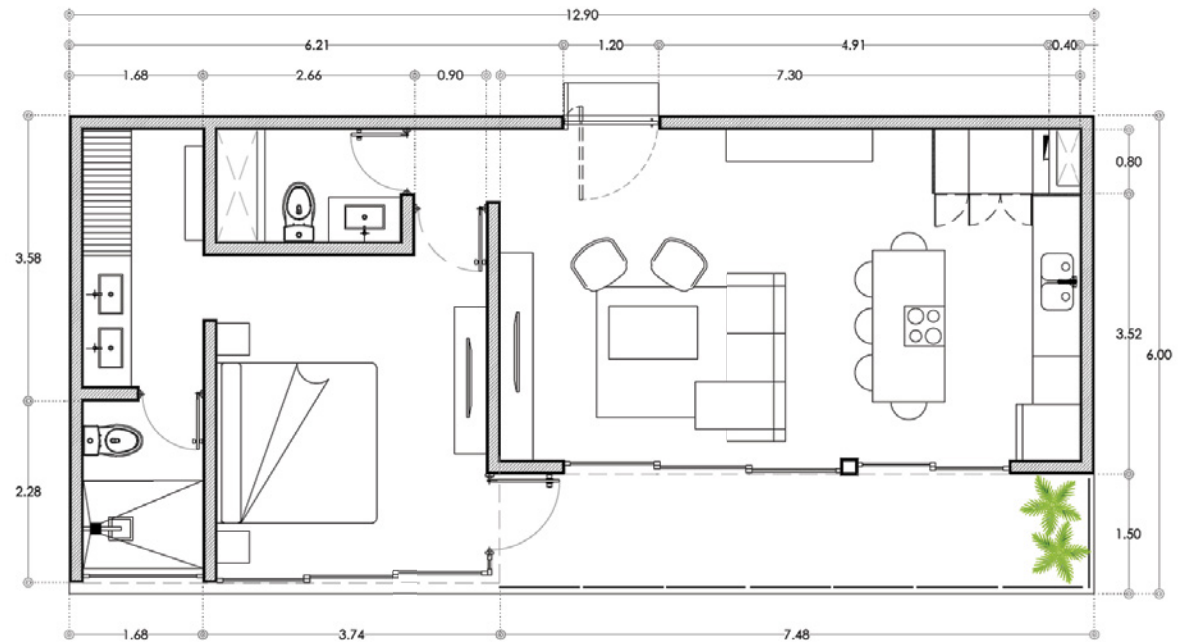
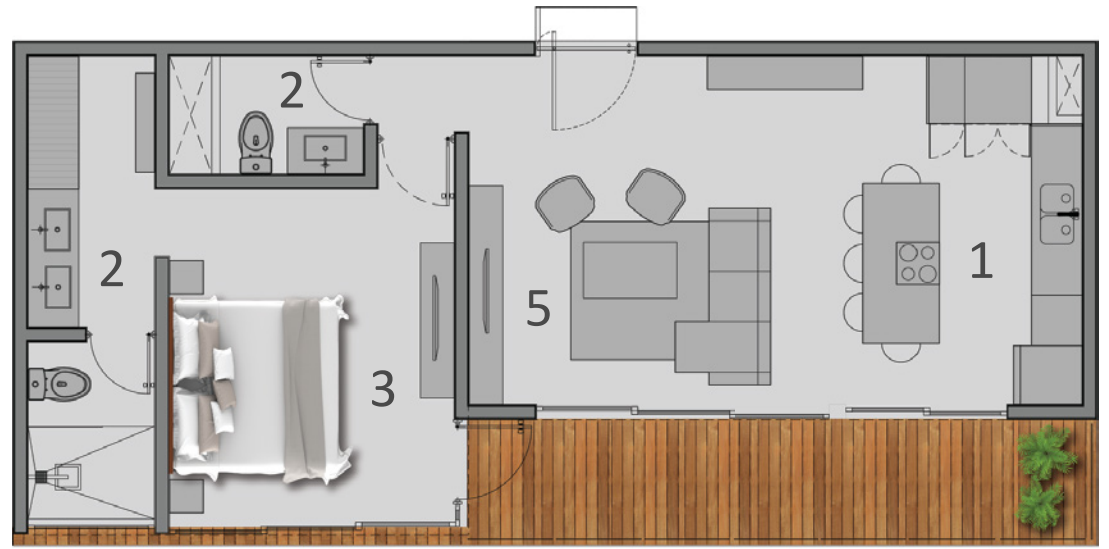
THE PANORAMIC

One bedroom

1. Kitchen
2. Bathroom
3. Bedroom
4. Terrace
5. Living Room

Floor plan

ONE BEDROOM 66.18 + 11.22 = 77.40 Sq. meters



* Las medidas y areas son indicativas y pueden sufrir pequeñas variaciones durante el proceso de obra

Floor plan

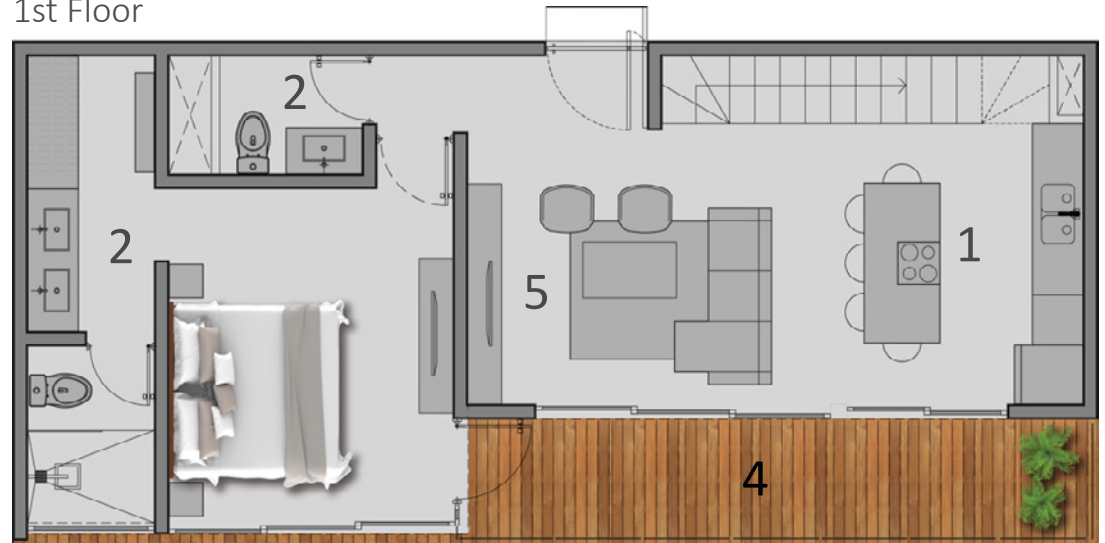
TWO BEDROOMS PENTHOUSE 112.46+40.14 = 152.60 Sq. meters

THE PANORAMIC

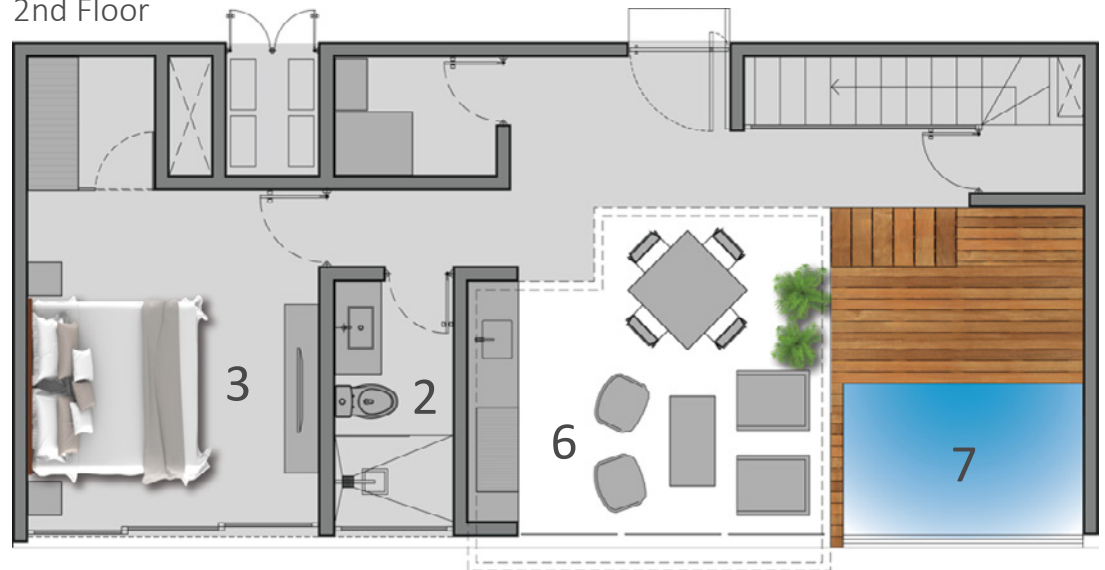
Two bedroom PH

1. Kitchen
2. Bathroom
3. Bedroom
4. Terrace
5. Living Room
6. Rooftop
7. Pool

1st Floor



2nd Floor



* Las medidas y areas son indicativas y pueden sufrir pequeñas variaciones durante el proceso de obra

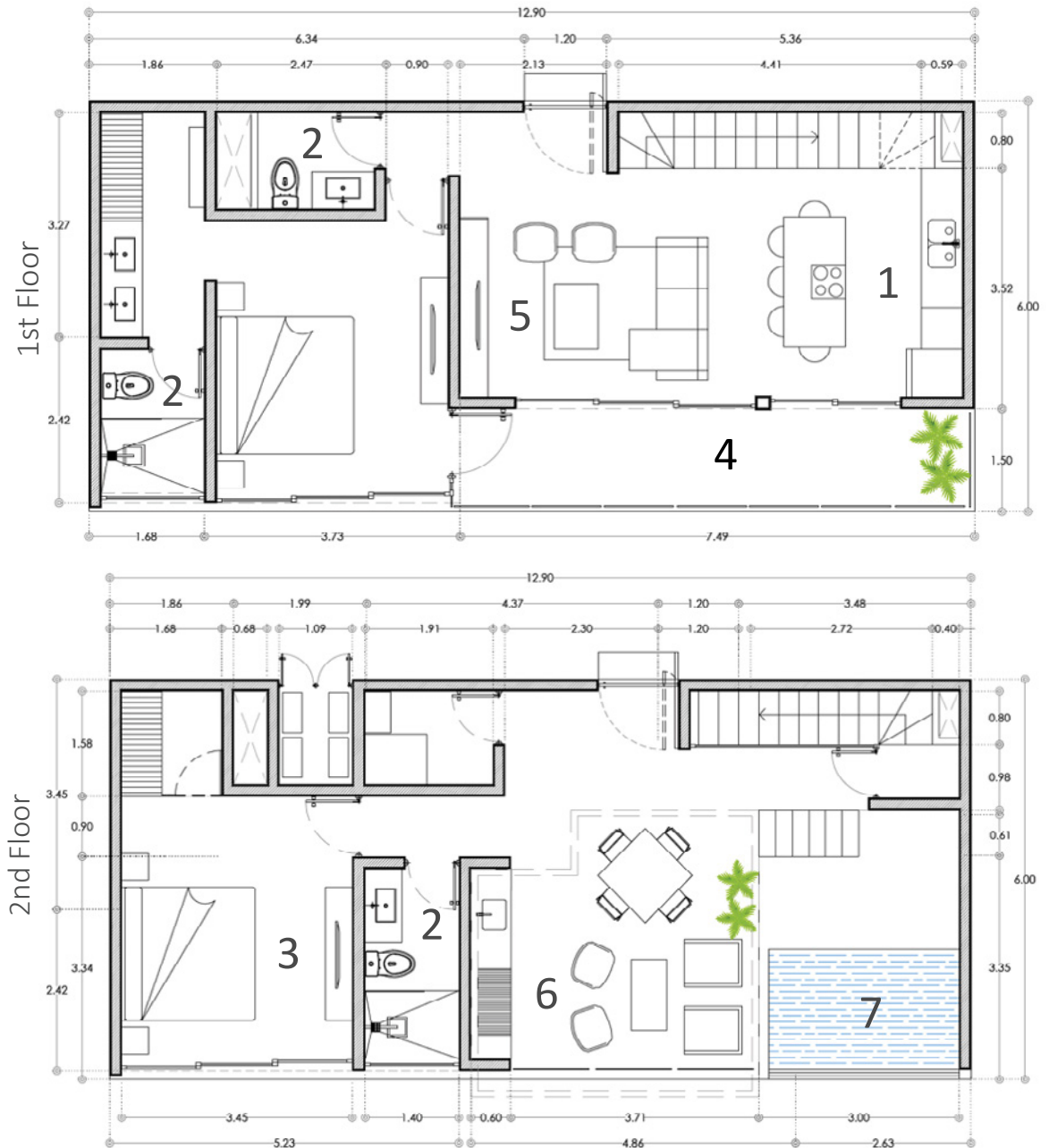
Floor plan

TWO BEDROOMS PENTHOUSE 112.46+40.14 = 152.60 Sq. meters

THE PANORAMIC

Two bedroom PH

1. Kitchen
2. Bathroom
3. Bedroom
4. Terrace
5. Living Room
6. Rooftop
7. Pool



* Las medidas y areas son indicativas y pueden sufrir pequeñas variaciones durante el proceso de obra

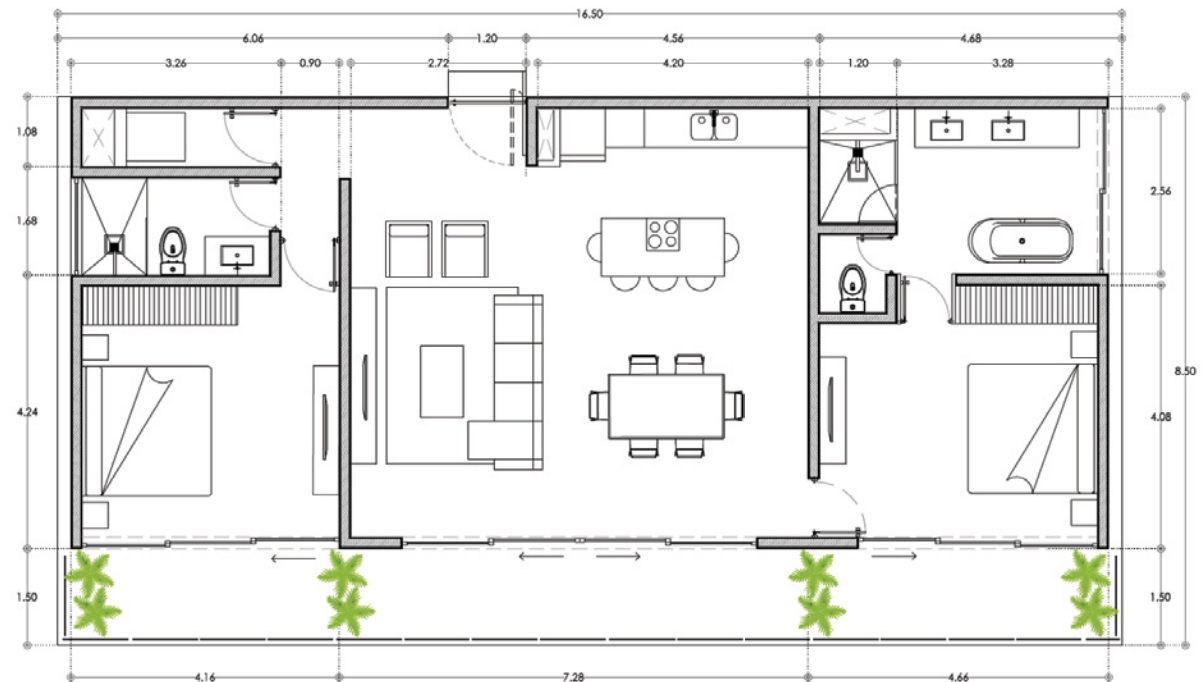
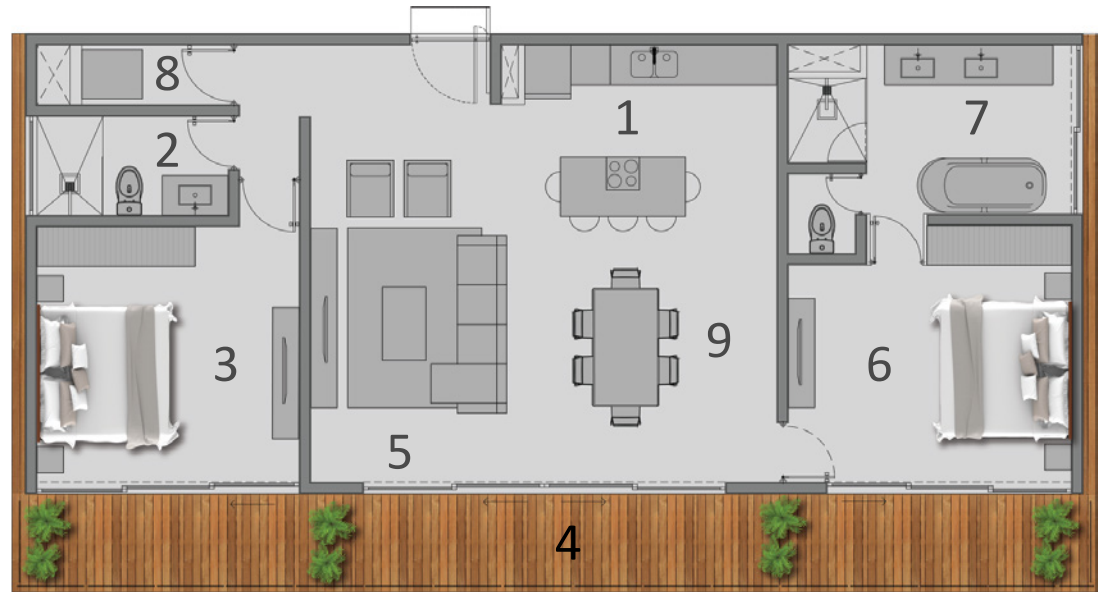
THE PANORAMIC

Two bedroom

1. Kitchen
2. Bathroom
3. Bedroom
4. Terrace
5. Living Room
6. Master Bedroom
7. Master Bathroom
8. Laundry
9. Dining Room

Floor plan

TWO BEDROOM 112.70+27.55 = 140.25 Sq. meters



* Las medidas y areas son indicativas y pueden sufrir pequeñas variaciones durante el proceso de obra



Floor plan

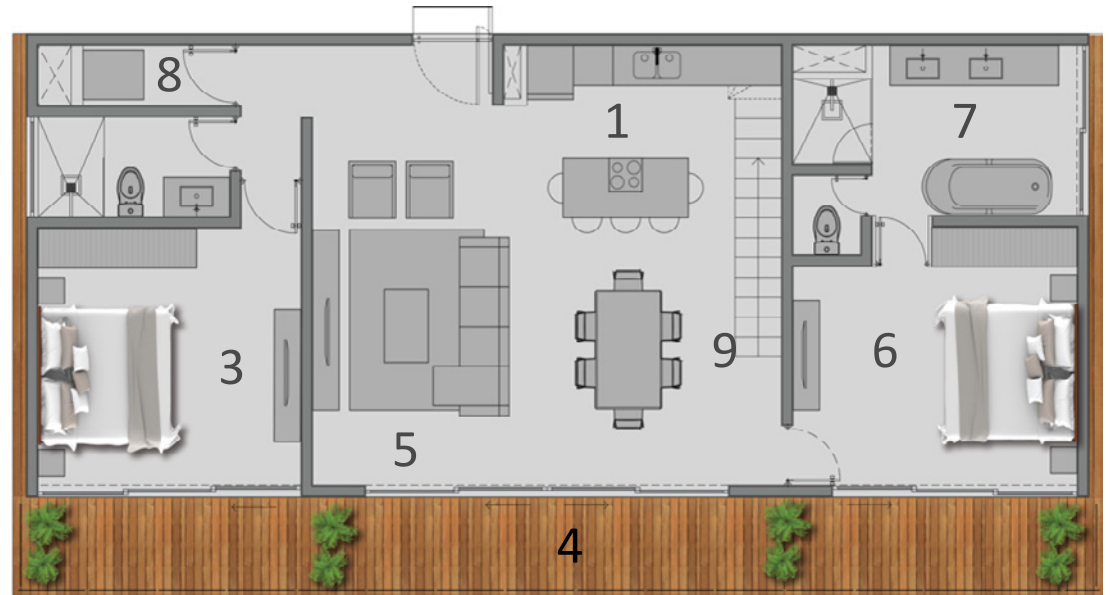
THREE BEDROOMS PENTHOUSE 164.68+112.86 =277.53sSq.

THE PANORAMIC

Three bedroom PH

1. Kitchen
2. Bathroom
3. Bedroom
4. Terrace
5. Living Room
6. Master Bedroom
7. Master Bathroom
8. Laundry
9. Dining Room
10. Rooftop
11. Pool

1st Floor



2nd Floor



* Las medidas y areas son indicativas y pueden sufrir pequeñas variaciones durante el proceso de obra

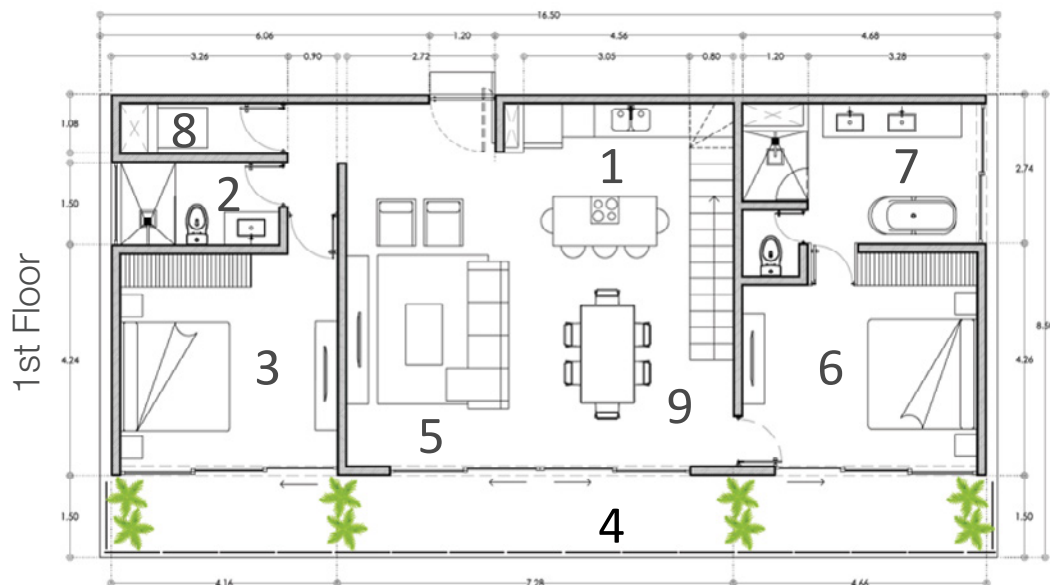
Floor plan

THREE BEDROOMS PENTHOUSE 164.68+112.86 =277.53&Sq.

THE PANORAMIC

Three bedroom PH

1. Kitchen
2. Bathroom
3. Bedroom
4. Terrace
5. Living Room
6. Master Bedroom
7. Master Bathroom
8. Laundry
9. Dining Room
10. Rooftop
11. Pool



* Las medidas y areas son indicativas y pueden sufrir pequeñas variaciones durante el proceso de obra



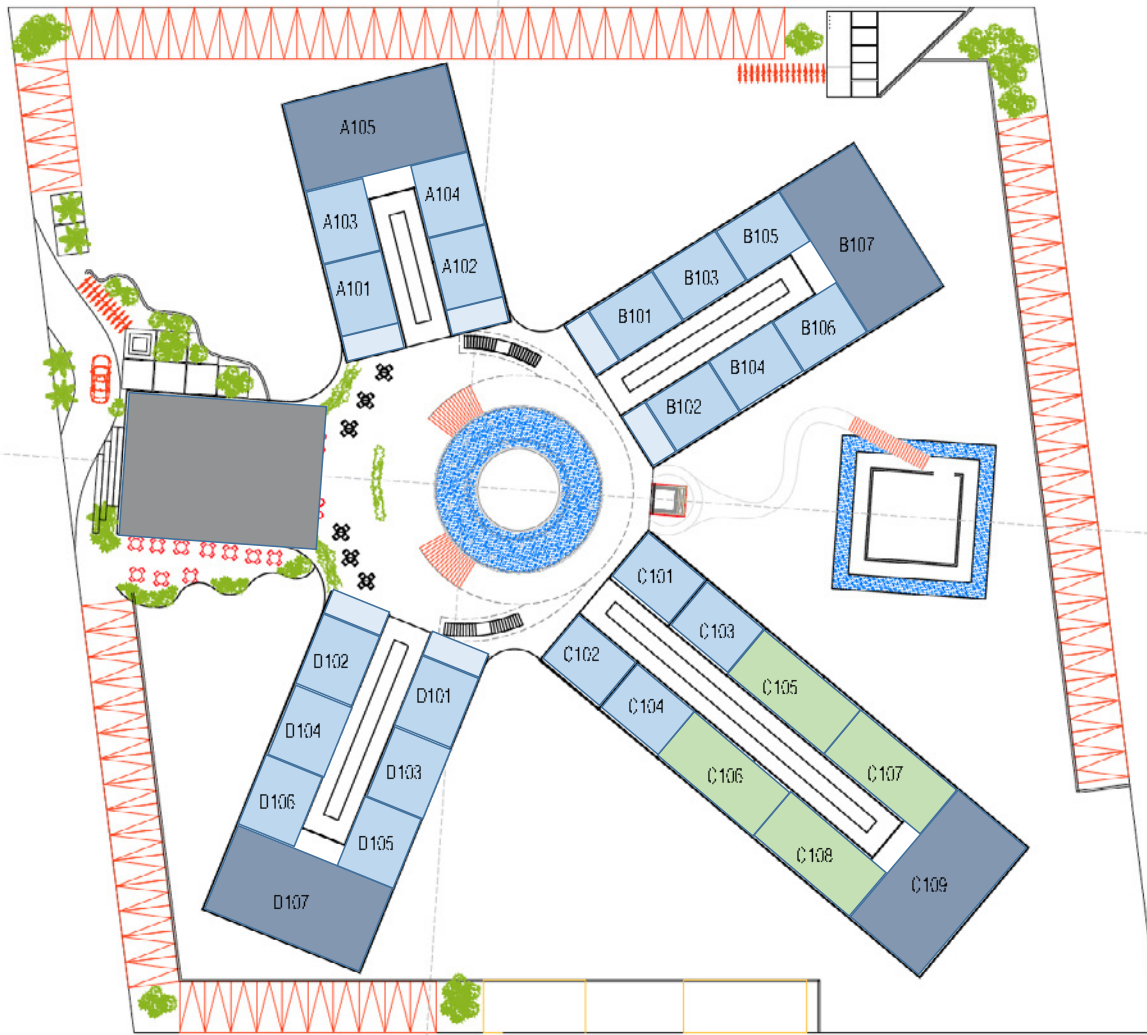
Amazing amenities on 10.000 m2



- 360 Degree Infinity Sky Pool
- Panoramic rooftop views
- Elevator
- Artificial cenote, waterfall and lake
- Tropical garden
- Two story luxury restaurant
- 24-hour concierge
- 24-hour security
- Yoga studio
- 1 minute from Central Park

THE PANORAMIC

A 360 EXPERIENCE

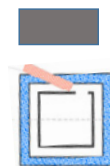


Planta baja

2 BR	4
1 BR	4
STUDIO	20

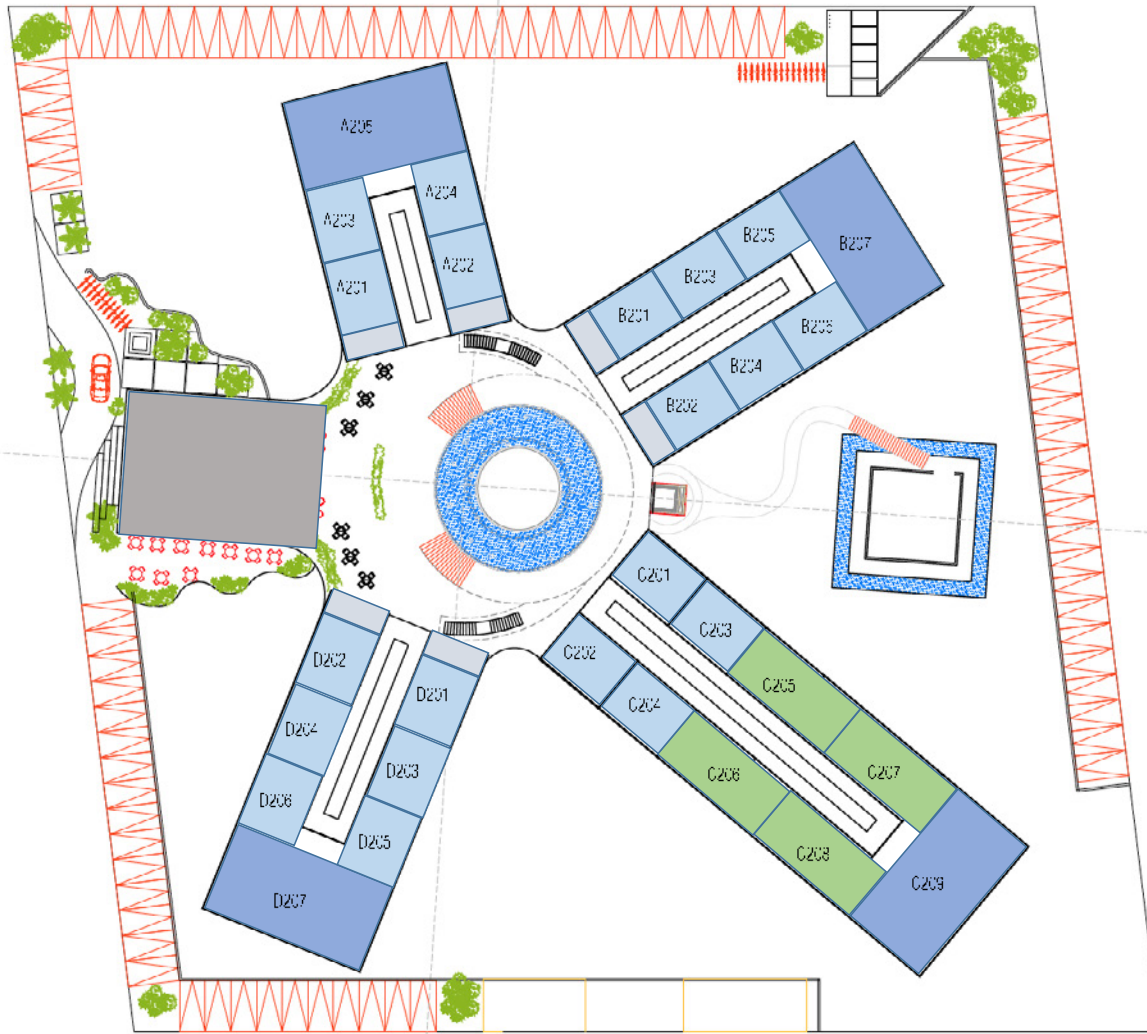
LOBBY /CONCIERGE

YOGA LOFT



THE PANORAMIC

A 360 EXPERIENCE

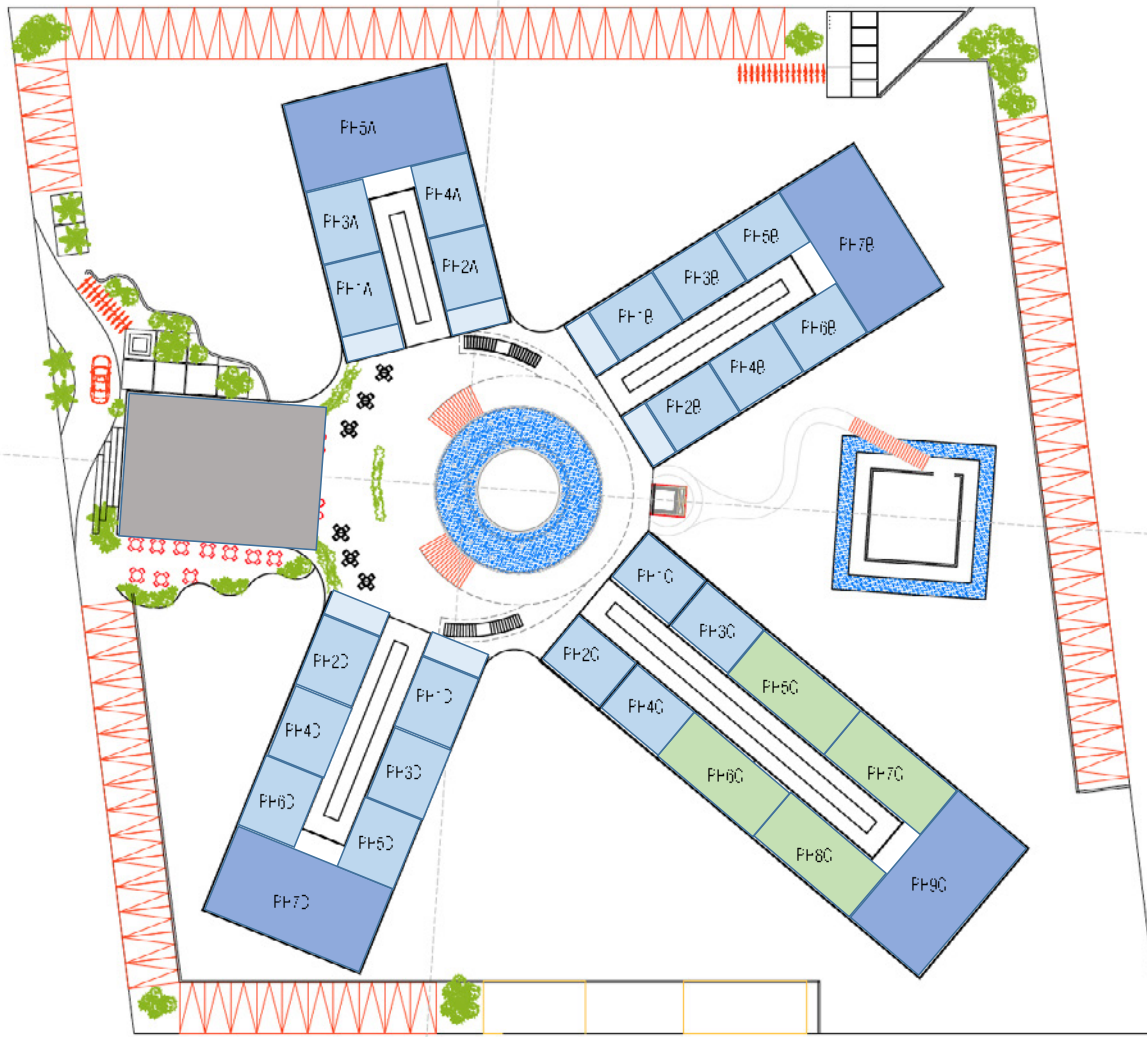


Primer nivel

2 BR	4
1 BR	4
STUDIO	20

RESTAURANTE



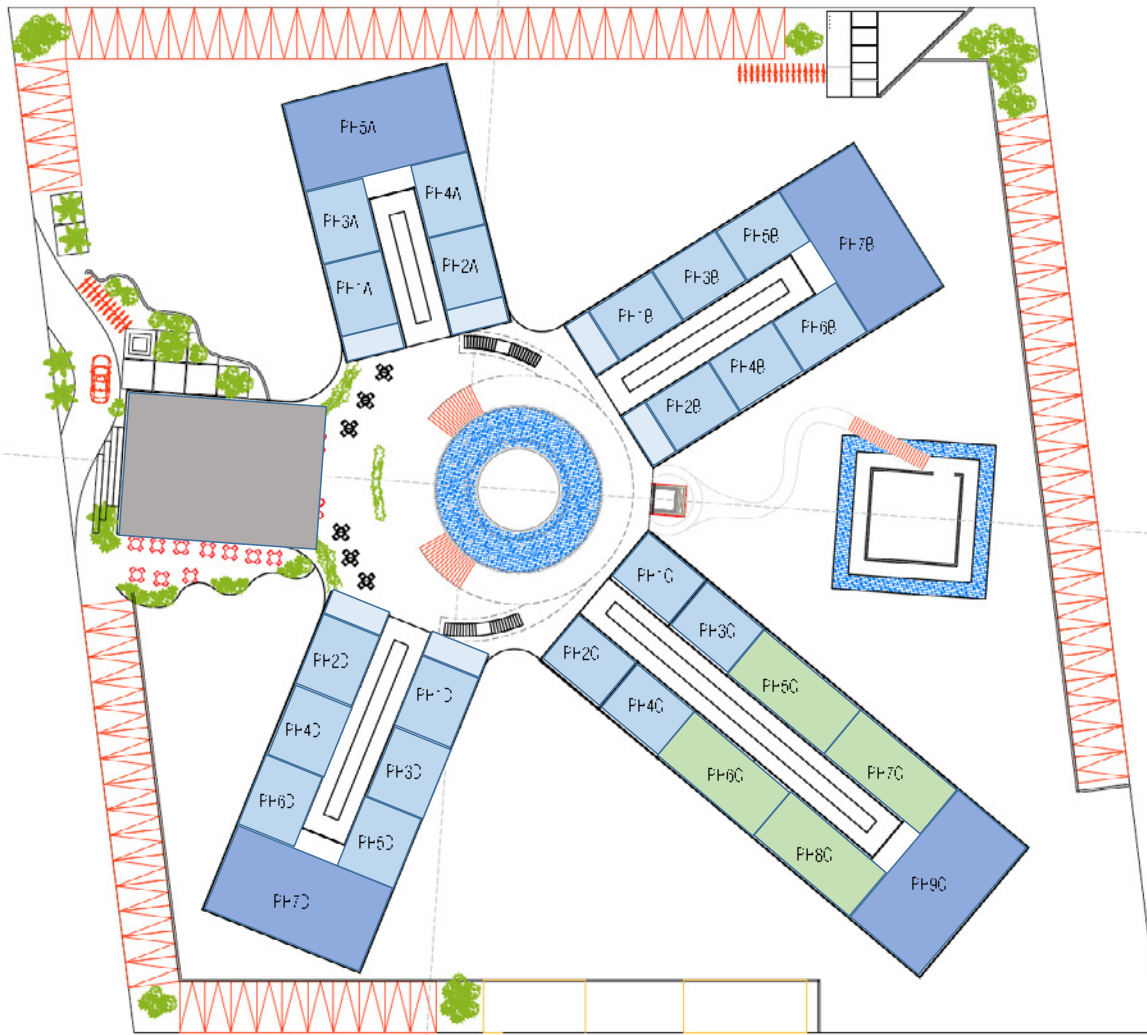


Penthouse Planta Baja

3BR PH	4
2BR PH	4
STUDIO PH	20

RESTAURANTE





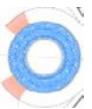
Penthouse Planta Alta

3BR PH rooftop	4
2BR PH rooftop	4
STUDIO PH rooftop	20

TERRACE



SKY VIEW POOL





THE PANORAMIC TULUM



www.losamigostulum.com

Tel. 984 871 2984



@losamigostulum