



A woman in a black dress is sitting on a wooden bench outdoors. She is looking towards the right, and her hands are resting on her lap. The background is a blurred outdoor setting with trees and a warm, golden light, suggesting a sunset or sunrise. The text "discover yourself" is overlaid in the center of the image.

discover yourself

A large crowd of people is gathered on a wooden pier or boardwalk at sunset. The sun is low on the horizon, creating a warm, golden glow and long shadows. In the foreground, a man with long dreadlocks is seen in profile, looking towards the right. Next to him, a woman with blonde hair is adjusting her hair. To the right, another woman with long brown hair and sunglasses is looking towards the left. The background is filled with many other people, some looking towards the water, others talking or walking. The overall atmosphere is relaxed and social.

enjoy yourself




motmot
TULUM


the luxury of finding yourself...



TULUM



Submerged in the middle of the jungle hides a paradise of turquoise waters and white sand. Nature and its beautiful fauna are just some of the things that Tulum offers for any type of guest. Party or relaxation, beach or jungle, the options are endless, you choose the way to find yourself in this magical place that never ceases to surprise us.



amazing location



Aldea Zamá is a leading international real estate project with exceptional infrastructure. Located in Tulum, 2 hours south of Cancun and 1 hour south of Playa del Carmen.

This majestic ecotourism and residential project is located in a central area of the fishing village, which allows you to enjoy bike tours to the archaeological zone, the hotel zone, the beach, the town of Tulum and the incredible cenotes

Carr. Tulum - Cancún

Archeological Site

TULUM TOWN

Av. Cobá

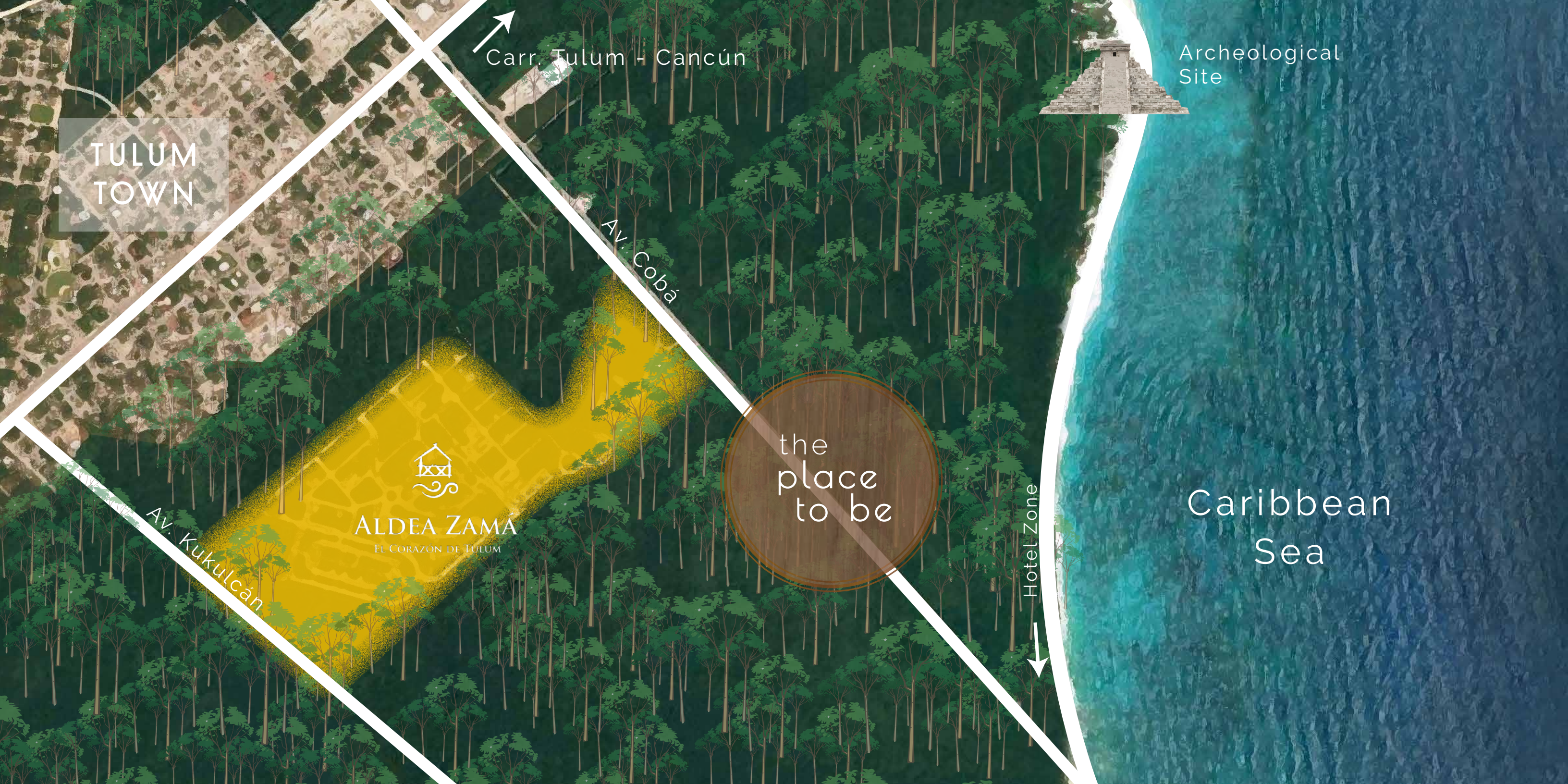
the place to be

Caribbean Sea

Av. Kukulcán

ALDEA ZAMÁ
El Corazón de Tulum

Hotel Zone





Aldea Zama location

Calle Balam Dzakab, esquina
Av. Juanek, Lote 01, Mza 15,
Aldea Zama, 77760 Tulum, Q.R.





Motmot Luxury Hotel Boutique is an exclusive condominium project located in Aldea Zama, in the heart of Tulum, Quintana Roo.

It has its own architecture, an elegant and sophisticated design. The atmosphere, decoration and service seek to provide a unique experience and relaxing in an intimate environment.

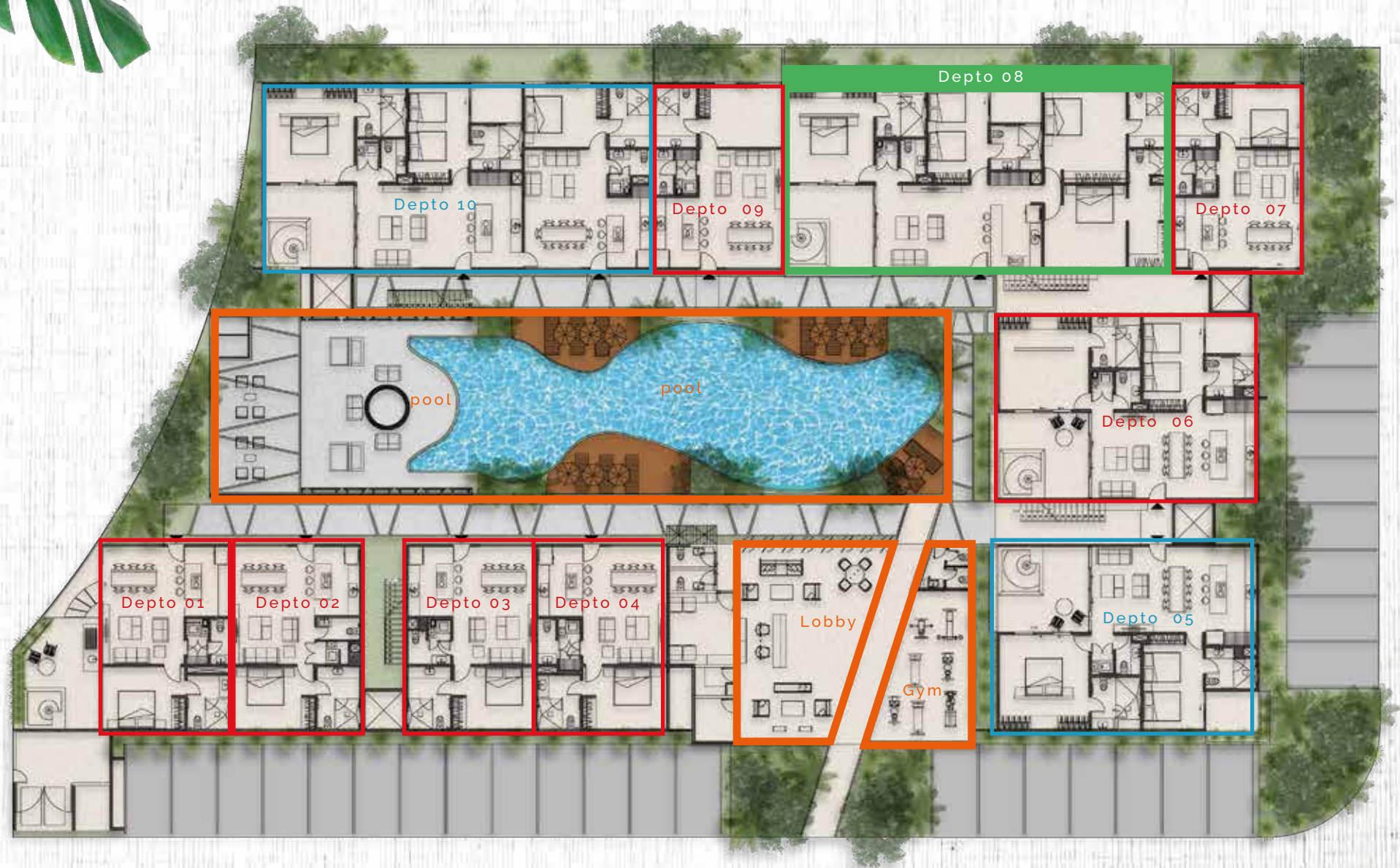
motmot
TULUM





masterplan

ground floor

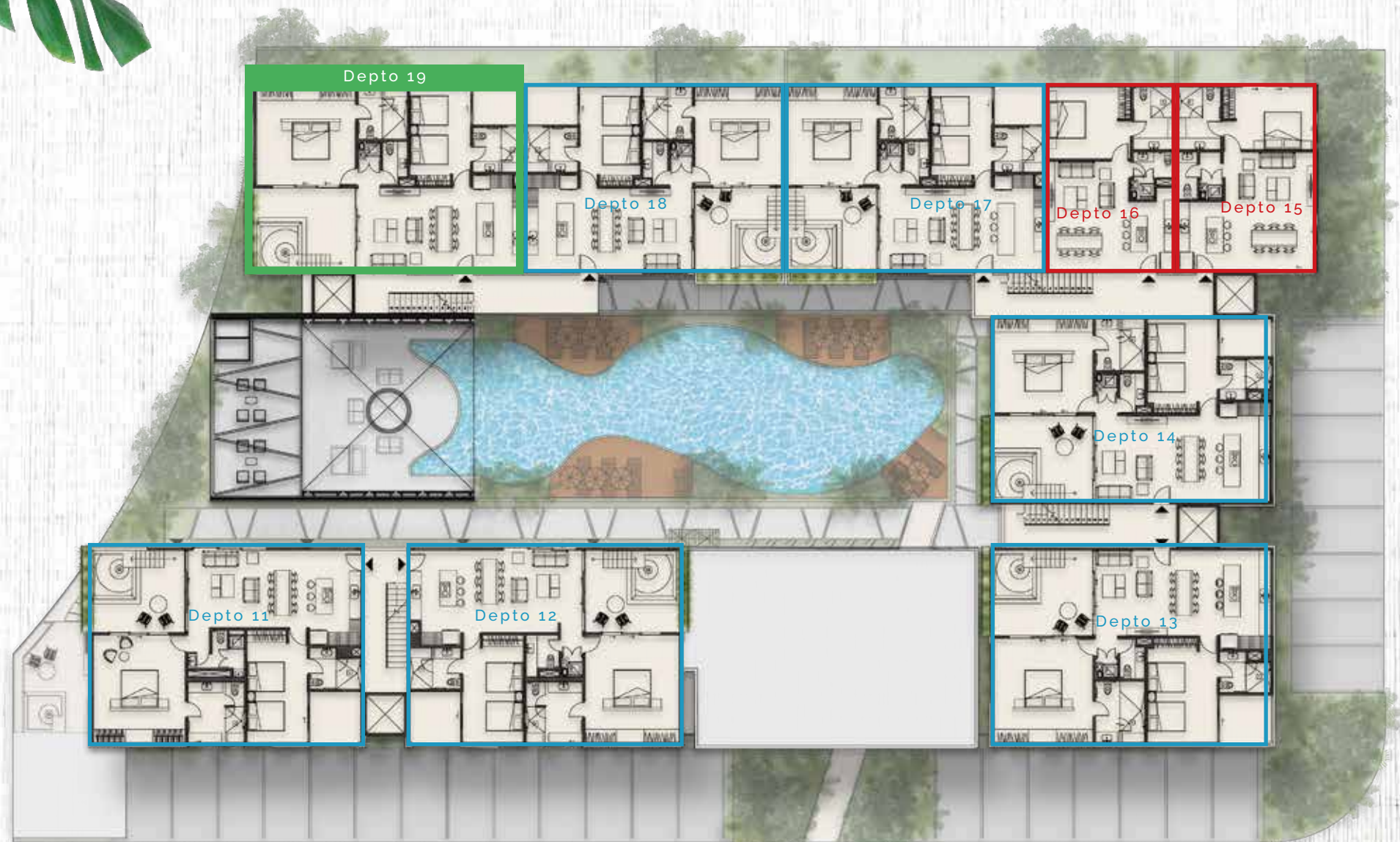


- AVAILABLE
- Model 01
- Model 02
- Penthouse
- Common areas



masterplan

1st level



- AVAILABLE
- Model 01
- Model 02
- Penthouse
- Common areas



masterplan

2nd level



AVAILABLE



Model 01



Model 02



Penthouse



Common areas

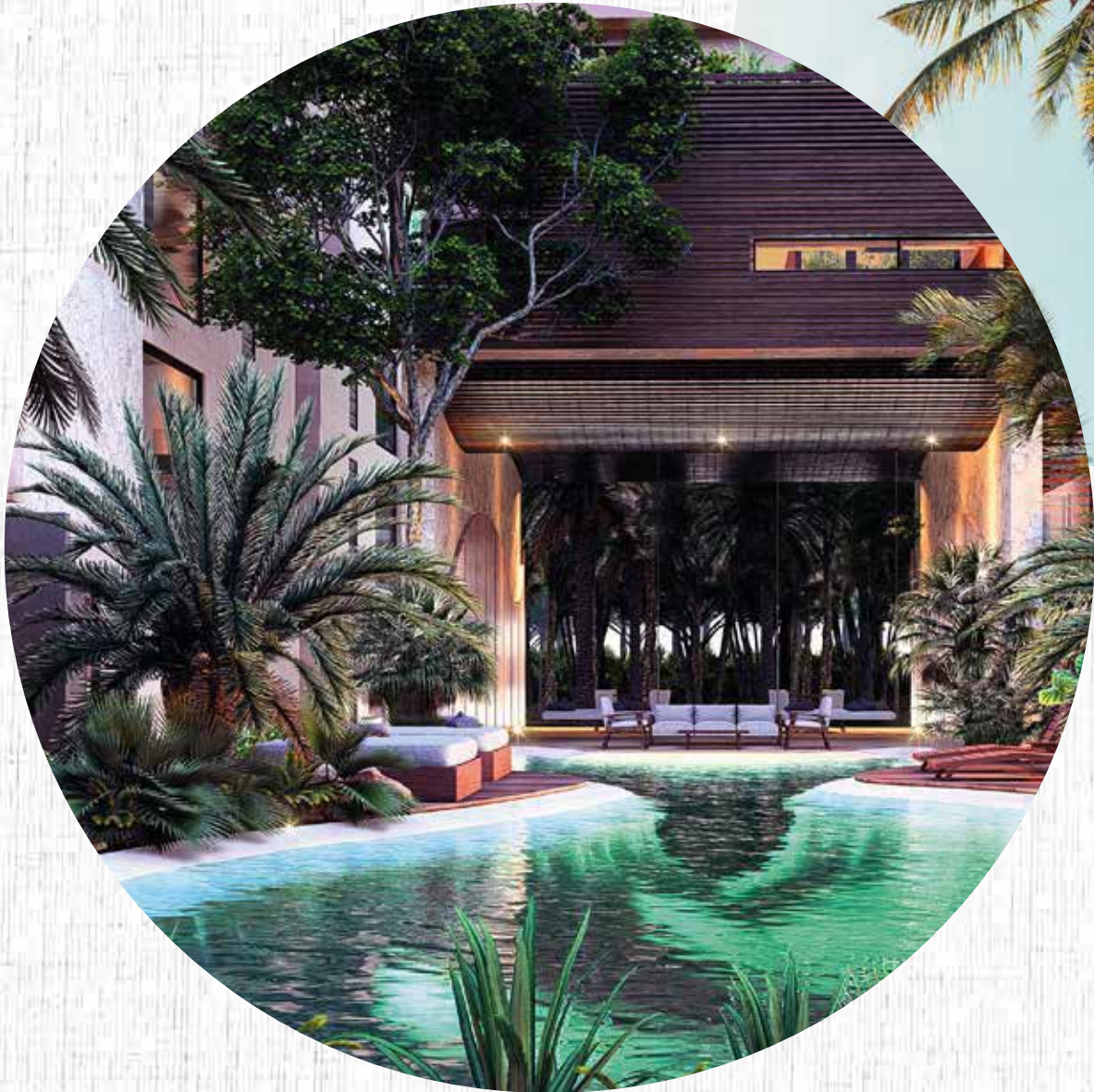


masterplan

3rd level



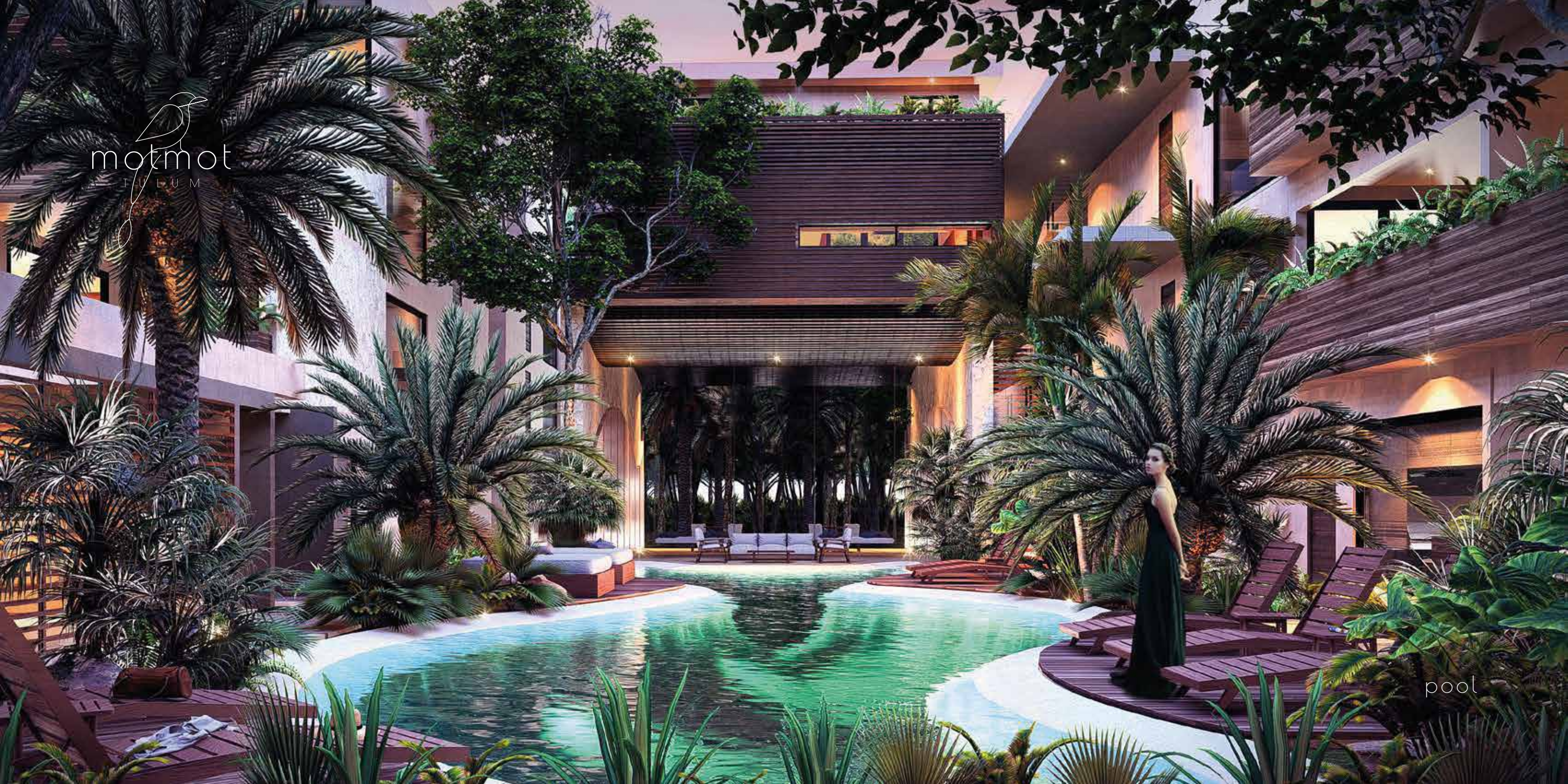
- AVAILABLE
- Model 01
- Model 02
- Penthouse
- Common areas



amenities

- Lobby with 24 hr. reception
- Concierge
- Business center
- Gym
- Pools
- Sundeck
- Wifi
- Transport to the beach & bikes
- Cleaning service

motmot
TULUM



pool



motmot
TULUM

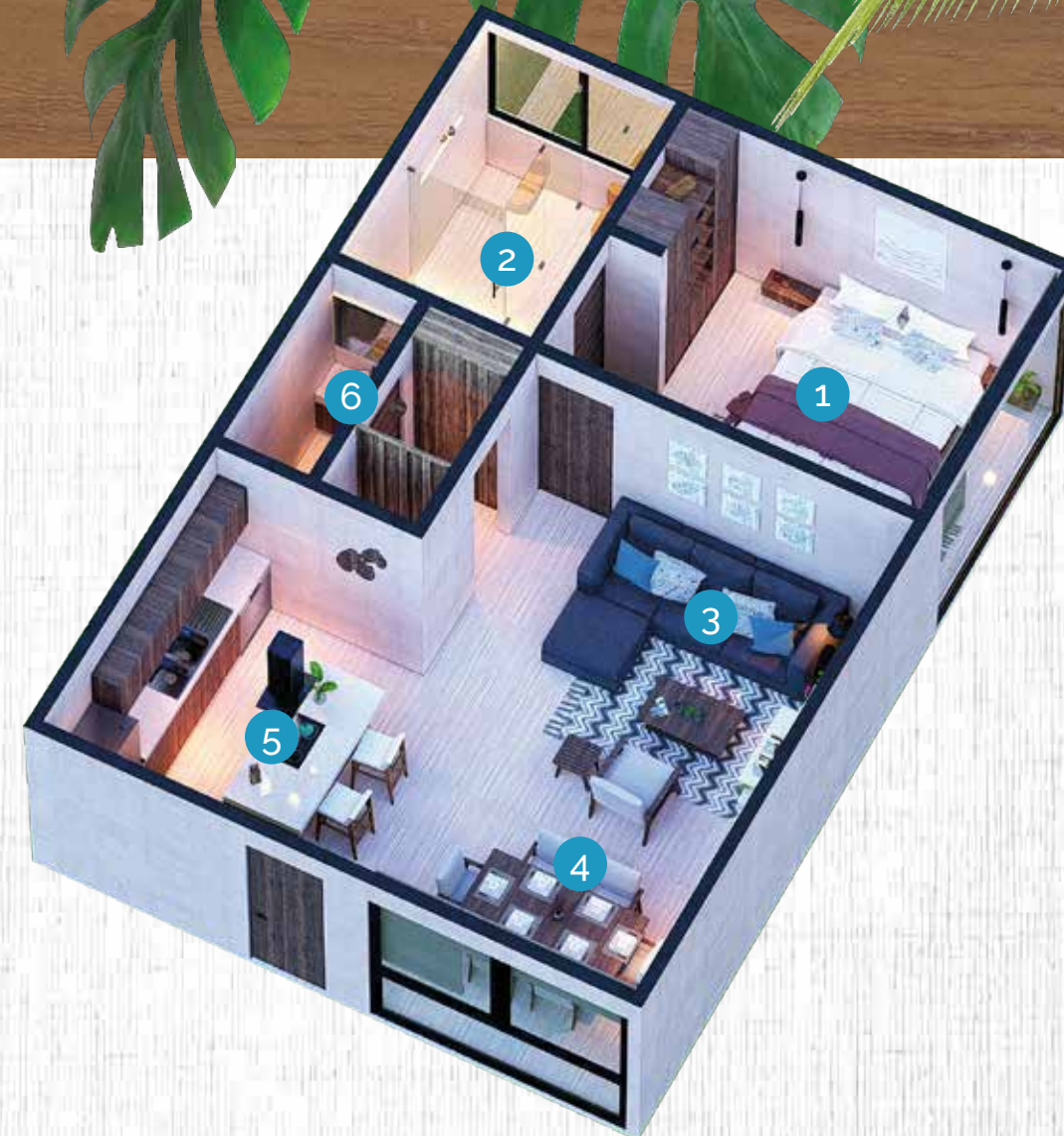
MODEL 01

1 bedroom

70.0 m²*

- 1 master bedroom
- 2 master bathroom
- 3 living room with sofa bed
- 4 dining room (6 people)
- 5 fully equiped kitchen
- 6 1/2 bathroom

*size and design may vary depending on the apartment





motmot
TULUM

living & dining room

bedroom



motmot
TULUM



motmot
TULUM



full bathroom

MODEL 01 - 1 bedroom

- 1 BEDROOM
- 1 COMPLETE MARBLE BATHROOM
- 1 HALF BATH
- LED LIGHTING THROUGHOUT

DEPARTMENT

- POLISHED SEALING AND RECTIFIED MARBLE FLOORS
- INTERIOR WALLS WITH CHUKUM FINISHING
- ALUMINUM PANORAMIC WINDOWS WITH 6MM GLASS
- ROLLER TYPE CURTAINS
- 3 MINI SPLIT INVERTER
- ELECTRIC BOILER
- FURNISHED MAIN TERRACE AND PLUNGE POOL
- CUSTOM DESIGN KITCHEN
- DOUBLE GRANITE BAR IN KITCHEN WITH TWO STOOLS
- DINING ROOM FOR 6 PEOPLE

- DOUBLE STAINLESS STEEL KITCHEN BOARD
- STOVE, OVEN AND ELECTRIC HOOD
- FRIDGE
- DISHWASHER
- LIVING ROOM WITH CHAISE AND SOFA BED
- WASHING ROOM IN CLOSET WITH WASHER AND TOWER DRYER
- MASTER BEDROOM WITH KING SIZE, BEDSIDE TABLE AND LAMP
- FURNISHED BEDROOM TERRACES
- WOODEN CLOSETS
- SECONDARY BEDROOM WITH TWO QUEEN BEDS, BEDSIDE TABLE AND LAMP,
- MARBLE BATHROOMS WITH 9MM TEMPERED GLASS
- AMERICAN STANDARD WC
- INTERNET SYSTEM THROUGHOUT THE BUILDING
- SITE CONTROL CENTER (IN THE LOBBY ROOM)

MODEL O2

2 bedroom

144.25 m²*

- 1 fully equiped kitchen
- 2 dining room (6 p.)
- 3 living room with sofa bed
- 4 terrace & jacuzzi
- 5 master bedroom
- 6 master bathroom
- 7 1/2 bathroom
- 8 bedroom 2
- 9 terrace
- 10 bathroom room 2

*size and design may vary depending on the apartment



motmot
TULUM

living & dining room



fully equiped kitchen
& dinning room



motmot
TULUM



terrace & jacuzzi



motmot
LUM

MODEL 02 - 2 bedrooms

- 2 BEDROOMS
- 2 COMPLETE MARBLE BATHROOM
- 1 HALF BATH
- LED LIGHTING THROUGHOUT
- DEPARTMENT
- POLISHED SEALING AND RECTIFIED MARBLE FLOORS
- INTERIOR WALLS WITH CHUKUM FINISHING
- ALUMINUM PANORAMIC WINDOWS WITH 6MM GLASS
- ROLLER TYPE CURTAINS
- 3 MINI SPLIT INVERTER
- ELECTRIC BOILER
- FURNISHED MAIN TERRACE AND PLUNGE POOL
- CUSTOM DESIGN KITCHEN
- DOUBLE GRANITE BAR IN KITCHEN WITH TWO STOOLS
- DINING ROOM FOR 6 PEOPLE
- DOUBLE STAINLESS STEEL KITCHEN BOARD
- STOVE, OVEN AND ELECTRIC HOOD
- FRIDGE
- DISHWASHER
- LIVING ROOM WITH CHAISE AND SOFA BED
- WASHING ROOM IN CLOSET WITH WASHER AND TOWER DRYER
- MASTER BEDROOM WITH KING SIZE, BEDSIDE TABLE AND LAMP
- FURNISHED BEDROOM TERRACES
- WOODEN CLOSETS
- SECONDARY BEDROOM WITH TWO QUEEN BEDS, BEDSIDE TABLE AND LAMP,
- MARBLE BATHROOMS WITH 9MM TEMPERED GLASS
- AMERICAN STANDARD WC
- INTERNET SYSTEM THROUGHOUT THE BUILDING
- SITE CONTROL CENTER (IN THE LOBBY ROOM)



PENTHOUSE

241.80 m²*

- | | | | |
|---|---------------------------|----|-----------------|
| 1 | fully equiped kitchen | 6 | master bathroom |
| 2 | dining room (6 p.) | 7 | staircase |
| 3 | living room with sofa bed | 8 | bedroom 2 |
| 4 | terrace & jacuzzi | 9 | terrace |
| 5 | master bedroom | 10 | bathroom room 2 |



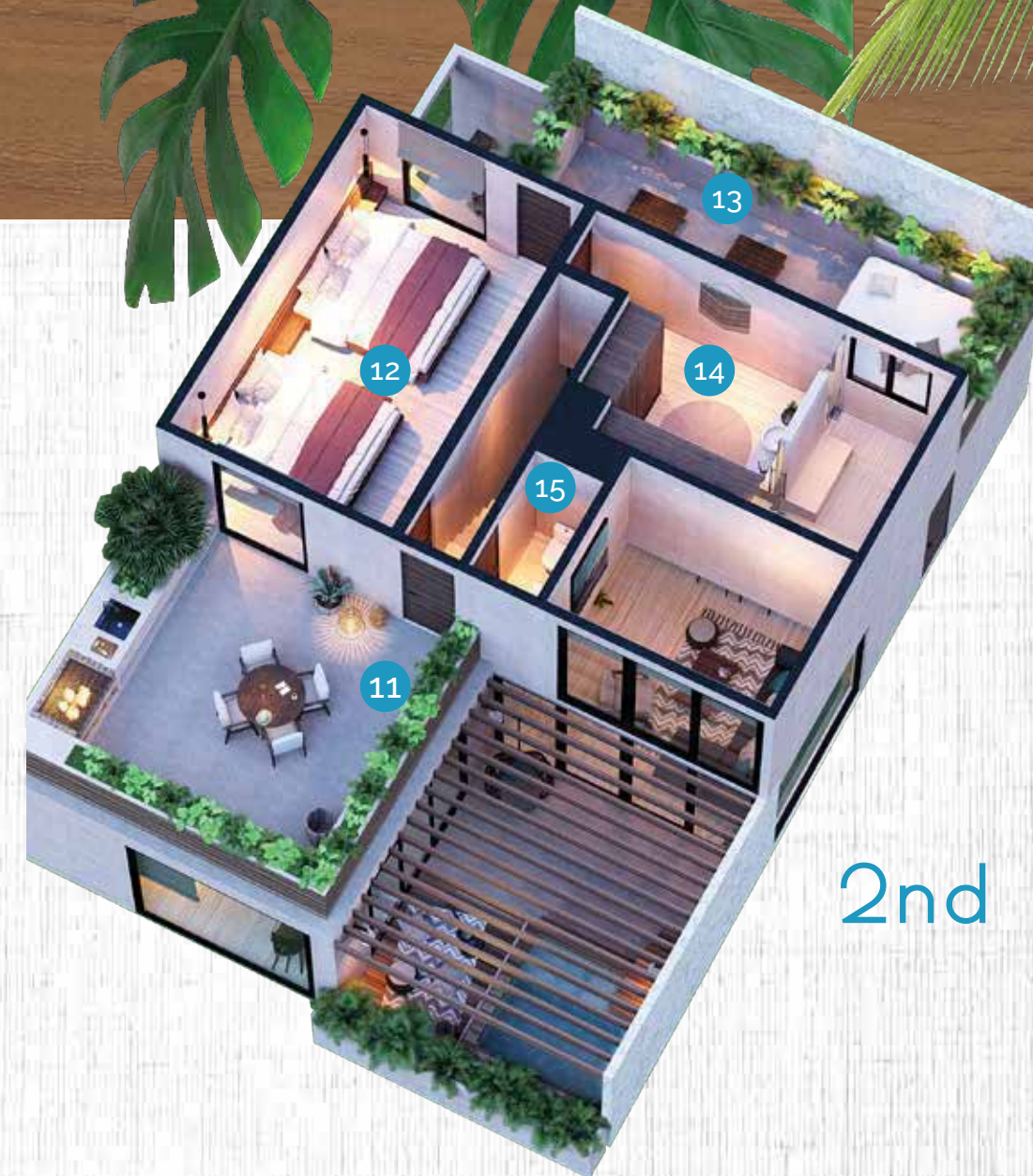
1st level

*size and design may vary depending on the apartment

PENTHOUSE

241.80 m²

- 11 rooftop & bbq
- 12 bedroom 3
- 13 sundeck
- 14 full bathroom 3
- 15 1/2 bathroom



2nd level



motmot
TULUM

dinning & living room



terrace & jacuzzi

motmot
TULUM



bedroom



motmot
TULUM



medemot
TULUM

bathroom
& closet



motmot
TULUM

bedroom 2



rooftop

motmot
TULUM



façade



motmot
T U L U M

MODEL PENTHOUSE – 3 or 4 bedrooms

- 3 OR 4 BEDROOMS
- 3 COMPLETE MARBLE BATHROOMS
- 1 HALF BATH
- LED LIGHTING THROUGHOUT
- DEPARTMENT
- POLISHED SEALING AND RECTIFIED MARBLE FLOORS
- INTERIOR WALLS WITH CHUKUM FINISHING
- ALUMINUM PANORAMIC WINDOWS WITH 6MM GLASS
- ROLLER TYPE CURTAINS
- 3 MINI SPLIT INVERTER
- ELECTRIC BOILER
- FURNISHED MAIN TERRACE AND PLUNGE POOL
- CUSTOM DESIGN KITCHEN
- DOUBLE GRANITE BAR IN KITCHEN WITH TWO STOOLS
- DINING ROOM FOR 6 PEOPLE
- DOUBLE STAINLESS STEEL KITCHEN BOARD
- STOVE, OVEN AND ELECTRIC HOOD
- FRIDGE
- DISHWASHER
- LIVING ROOM WITH CHAISE AND SOFA BED
- WASHING ROOM IN CLOSET WITH WASHER AND TOWER DRYER
- MASTER BEDROOM WITH KING SIZE, BEDSIDE TABLE AND LAMP
- FURNISHED BEDROOM TERRACES
- WOODEN CLOSETS
- SECONDARY BEDROOM WITH TWO QUEEN BEDS, BEDSIDE TABLE AND LAMP,
- MARBLE BATHROOMS WITH 9MM TEMPERED GLASS
- AMERICAN STANDARD WC
- INTERNET SYSTEM THROUGHOUT THE BUILDING
- SITE CONTROL CENTER (IN THE LOBBY ROOM)

motmot

	LEVEL	BEDROOMS	TOTAL SQM	\$ US DOLLARS
1	GROUND LEVEL		102.48	SOLD
2	GROUND LEVEL		70	SOLD
3	GROUND LEVEL		70	SOLD
4	GROUND LEVEL		70	SOLD
5	GROUND LEVEL		140	SOLD
6	GROUND LEVEL		140	SOLD
7	GROUND LEVEL		82.53	SOLD
8	GROUND LEVEL	4 bedrooms	245.91	\$750,000 US Dollars
9	GROUND LEVEL		81.78	SOLD
10	GROUND LEVEL	3 bedrooms	247.67	\$750,000 US Dollars
11	2ND LEVEL		152.25	SOLD
12	2ND LEVEL		152.25	SOLD
13	2ND LEVEL		157.5	SOLD
14	2ND LEVEL		150	SOLD

motmot

	LEVEL	BEDROOMS	TOTAL SQM	\$ US DOLLARS
15	2ND LEVEL		75	SOLD
16	2ND LEVEL		69.25	SOLD
17	2ND LEVEL		138.50	SOLD
18	2ND LEVEL		138.50	SOLD
19	2ND LEVEL	2 bedrooms	144.25	SOLD
20	3RD LEVEL PH		271.80	SOLD
21	3RD LEVEL PH		271.80	SOLD
22	3RD LEVEL PH		275.90	SOLD
23	3RD LEVEL PH		244.96	SOLD
24	3RD LEVEL PH		246.10	SOLD
25	3RD LEVEL PH	3 bedrooms	241.86	\$750,000 US Dollars
26	3RD LEVEL PH	3 bedrooms	241.79	\$750,000 US Dollars
27	3RD LEVEL PH		248.10	SOLD
28	3RD LEVEL PH		227.58	SOLD



motmot
T U L U M

the luxury of finding yourself...