

△ AMELIA △

TULUM LUXURY RESIDENCES



DISPONIBILIDAD Y PRECIOS AVAILABILITY & PRICES

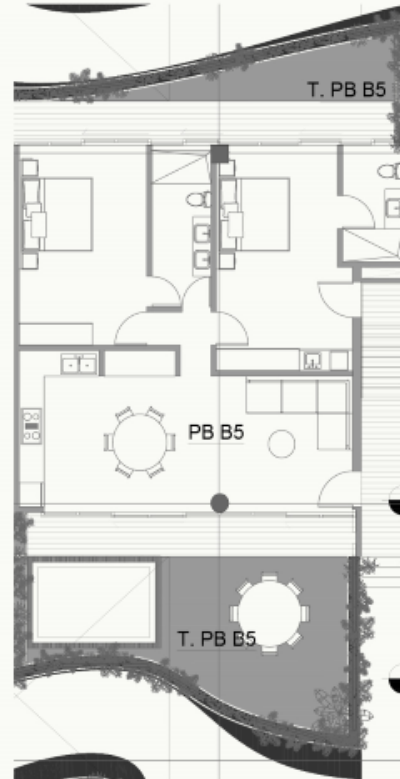
104

\$ 451,000 USD

2 RECÁMARAS / 2-BEDROOMS

Recámara Lock Off
2 Baños
Sala Comedor
Cocina Integral
Terraza
Jardín
Alberca Privada 7.56m2
Interior: 102 m2
Exterior: 75 m2
Área Total: 177 m2

*Lock Off System
2 Bathrooms
Living and Dining room
Kitchen
Terrace
Garden
Swimming pool 81.38 sq.ft
Indoor: 1098 sq.ft
Outdoor: 807.29 sq.ft
Total Area: 1905.21 sq.ft*





204

2 RECÁMARAS / 2-BEDROOMS

\$ 410,000 USD

2 Baños
Terraza
Alberca Privada
Interior: 103 m2
Exterior: 139 m2
Área Total: 242 m2

2 Bathrooms
Terrace
Swimming pool
Indoor: 1108.68 sq.ft
Outdoor: 1496.18sq.ft
Total Area: 2603 sq.ft



207

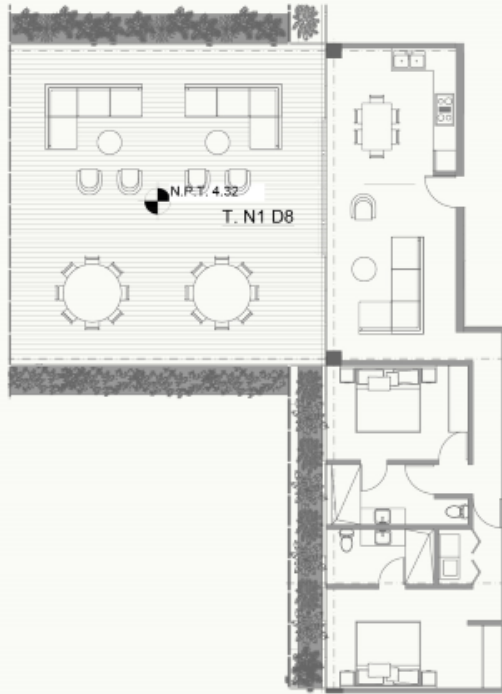
2 RECÁMARAS / 2-BEDROOMS

\$ 609,900 USD

Recámara Lock Off
2 Baños
Terraza
Alberca Privada:
Interior: 130 m2
Exterior: 152 m2
Área Total: 282 m2

Lock Off System
2 Bathrooms
Terrace
Swimming pool:
Indoor: 1399 sq.ft
Outdoor: 1636.11 sq.ft
Total Area: 3035.42 sq.ft





208

\$ 415,100 USD

2 RECÁMARAS / 2-BEDROOMS

Recámara Lock Off
2 Baños
Terraza
Interior: 98 m2
Exterior: 130 m2
Área Total: 228 m2

Lock Off System
2 Bathrooms
Terrace
Indoor: 1055 sq.ft
Outdoor: 1399.30
Total Area: 2454.17 sq.ft



209

\$ 404,900 USD

2 RECÁMARAS / 2-BEDROOMS

Recámara Lock Off
2 Baños
Terraza
Interior: 98 m2
Exterior: 77 m2
Área Total: 175 m2

Lock Off System
2 Bathrooms
Terrace
Indoor: 1055 sq.ft
Outdoor: 828 sq.ft
Total Area: 1883.68 sq.ft





211

\$ 420,300 USD

2 RECÁMARAS / 2-BEDROOMS

2 Baños

Terraza

Interior: 85 m2

Exterior: 82 m2

Área Total: 167 m2

2 Bathrooms

Terrace

Indoor: 915 sq.ft

Outdoor: 882 sq.ft

Área Total: 1797 sq.ft



212

\$ 394,600 USD

2 RECÁMARAS / 2-BEDROOMS

Recámara Lock Off

2 Baños

Terraza

Interior: 102 m2

Exterior: 77m2

Área Total: 179 m2

Lock Off System

2 Bathroom

Terrace

Indoor: 1098 sq.ft

Outdoor: 828

Área Total: 1926 sq.ft





214

\$ 543,300 USD

2 RECÁMARAS / 2-BEDROOMS

Recámara Lock Off

2 Baños

Terraza

Alberca Privada 13.97 m2

Interior: 102 m2

Exterior: 148 m2

Área Total: 250 m2

Lock Off System

2 Bathrooms

Terrace

Swimming pool 150 sq.ft

Indoor: 1097 sq.ft

Outdoor: 1593 sq.ft

Total Area: 2690 sq.ft



216

\$ 512,500 USD

2 RECÁMARAS / 2-BEDROOMS

2 Baños

Terraza

Alberca Privada 13.97 m2

Interior: 85 m2

Exterior: 152 m2

Área Total: 237 m2

2 Bathroom

Terrace

Swimming pool 150 sq.ft

Indoor: 914

Outdoor: 1636

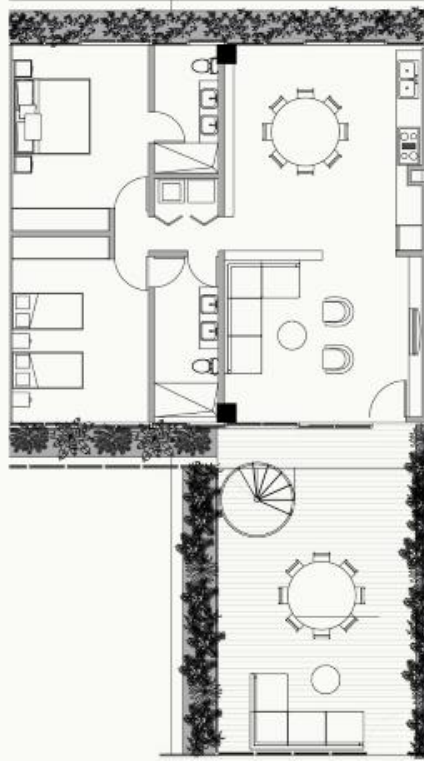
Área Total: 2551 sq.ft

VISTA GLORIETA
VIEW GLORIETA



VISTA LUUM ZAMA
VIEW LUUM ZAMA

VISTA LOBBY
VIEW LOBBY



Rooftop



304

\$ 646,200 USD

PENTHOUSE

- | | |
|--------------------------|-------------------------|
| 2 Recámaras | 2-Bedrooms |
| 2 Baños | 2 Bathrooms |
| Terraza | Terrace |
| Jardín | Garden |
| Rooftop Privado 136 m2 | Rooftop 1463 sq.ft |
| Alberca Privada 12.36 m2 | Swimming pool 133 sq.ft |
| Interior: 110 m2 | Indoor: 1184 sq.ft |
| Exterior: 214 m2 | Outdoor: 2303 sq.ft |
| Área Total: 324 m2 | Total Area: 3487 sq.ft |

› Disponible / Available



VISTA
GLORIETA
VIEW
GLORIETA

VISTA LOBBY
VIEW LOBBY

VISTA LUUM ZAMA
VIEW LUUM ZAMA



info@ameliatum.com
www.ameliatum.com

CITRIC