



GARDENS COBA



GARDENS COBA

## DEPARTAMENTO 1 RECÁMARA

Departamento 1 recámara  
Baño  
En-Suite baño  
Cocina Integral  
Terraza  
Área total: 58 m<sup>2</sup>

1-Bedroom  
Bathroom  
In-Suite bathroom  
Kitchen  
Terrace  
Total area: 624.31 sq.ft

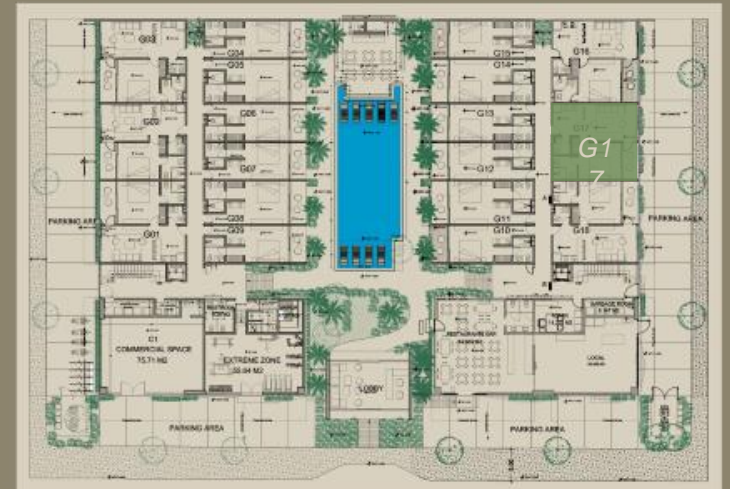


**DISPONIBLE / AVAILABLE**

**Torre 2 / Tower 2**

G17 \$ 149,000 USD

## PLANTA BAJA GROUND FLOOR





GARDENS COBA

# ESTUDIO / LOFT

Estudio/Loft  
Baño  
Cocineta  
Balcón  
Área total: 34.36 m<sup>2</sup>

Studio /Loft  
Bathroom  
Kitchenette  
Terrace  
Total Area: 369.85 sq.ft



## DISPONIBLE / AVAILABLE

### Torre / Tower 1

N2 - 301 \$ 104,000 USD

N2 - 305 \$ 104,000 USD

### Torre / Tower 2

N1 - 224 \$ 104,000 USD

N2 - 320 \$ 104,000 USD

## NIVEL 2 LEVEL 2



## NIVEL 3 LEVEL 3





GARDENS COBA

# DEPARTAMENTO 2 RECÁMARAS



Departamento 2 recámaras  
Baño  
Cocina  
Comedor  
Sala  
Área total: 74.65 m<sup>2</sup>

2-Bedroom  
Bathroom  
Kitchen  
Dinning Room  
Living room  
Total Area: 803.53 sq.ft

**DISPONIBLE / AVAILABLE**

**Torre / Tower 1**

N1 - 206 \$ 177,000 USD

**Torre / Tower 2**

N1 - 219 \$ 174,000 USD

N1 - 223 \$ 174,000 USD

N2 - 318 \$ 184,000 USD

## NIVEL 2 LEVEL 2



## NIVEL 3 LEVEL 3





GARDENS COBA

# PENTHOUSE 1 RECÁMARA

Penthouse  
1 recámara  
Baño  
Cocina Integral  
Comedor  
Sala  
Alberca privada  
Área total: 109 m<sup>2</sup>

Penthouse  
1-Bedroom  
Bathroom  
Kitchen  
Dinning room  
Living room  
Swimming pool  
Total Area: 1173.27 sq.ft



**DISPONIBLE / AVAILABLE**

**Torre / Tower 1**

PH05 \$ 199,000 USD

## ROOF GARDEN





GARDENS COBA

**CITRIC**

984 218 1887

[info@citricgroup.com](mailto:info@citricgroup.com)