



XKAA

OCEAN VIEW CONDOS

PLAYA DEL CARMEN

X

XKAA OCEAN VIEW CONDOS PLAYA DEL GARMEN



*Ocean View*



*Condos*

A

A

**XKAA**  
OCEAN VIEW CONDOS

**Despierta en el corazón de la Riviera Maya,  
recorre los paisajes tropicales de arena blanca,  
conecta con culturas ancestrales,  
diviértete todos los días, disfruta todas las noches.**

*Wake up in the heart of the Mayan Riviera,  
walk the tropical white sand beaches,  
discover ancient cultures,  
enjoy every day, have fun every night.*



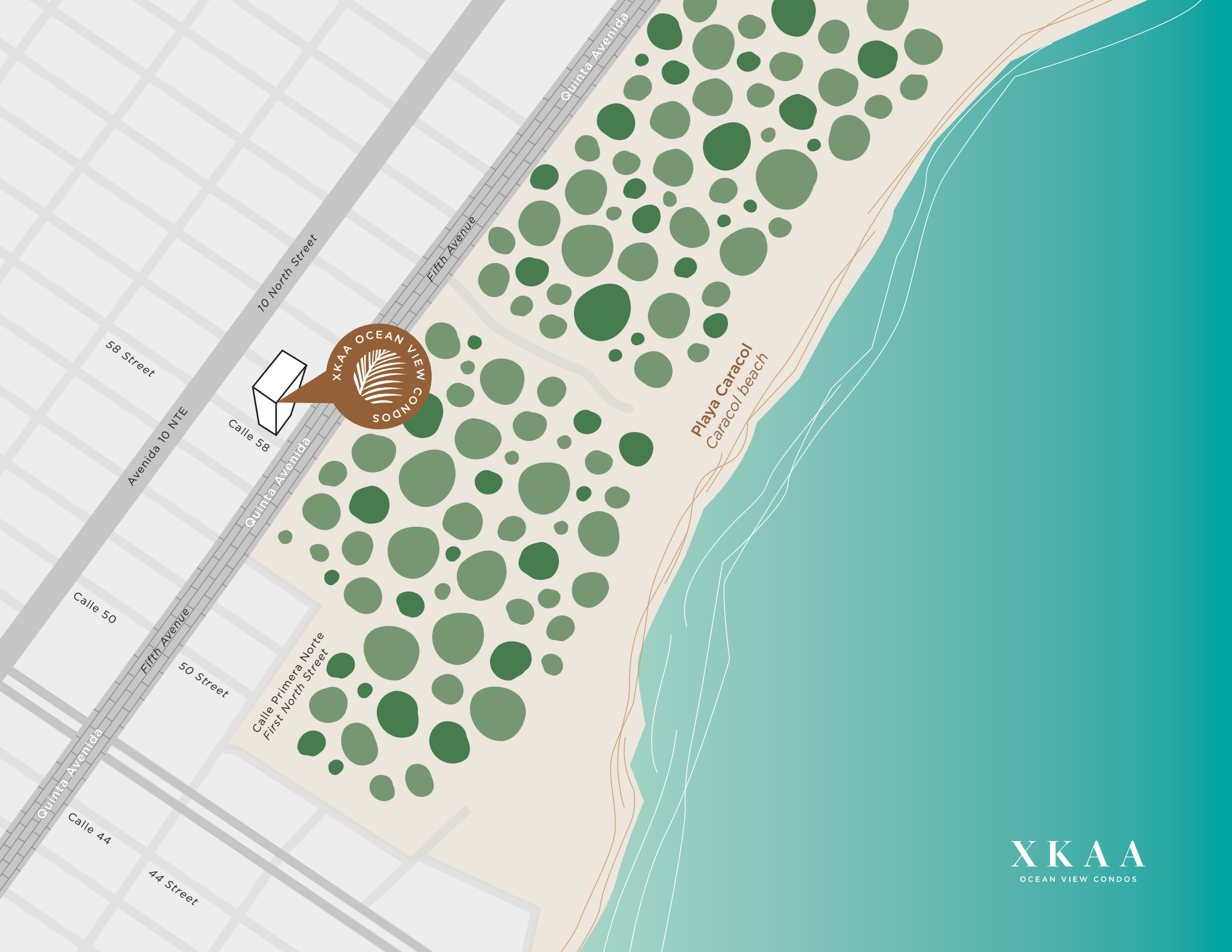
XKAA  
OCEAN VIEW CONDOS



**XKAA**  
OCEAN VIEW CONDOS  
THE PHILIPPINE VISION

**XKAA**  
OCEAN VIEW CONDOS

**XKAA**  
OCEAN VIEW CONDOS





**XKAA Ocean View Condos** es una torre que contará con 6 niveles, acceso controlado en lobby, elevador y un roof top lleno de amenidades.

*XKAA Ocean View Condos is a 6 story building with an access lobby, elevator and a roof top full of amenities.*

**XKAA**  
OCEAN VIEW CONDOS



Los interiores son decorados con maderas y acabados finos que le dan un toque elegante y moderno.

*The Interiors will be decorated with wood and fine finishes, bringing a twist of elegance and modernism.*

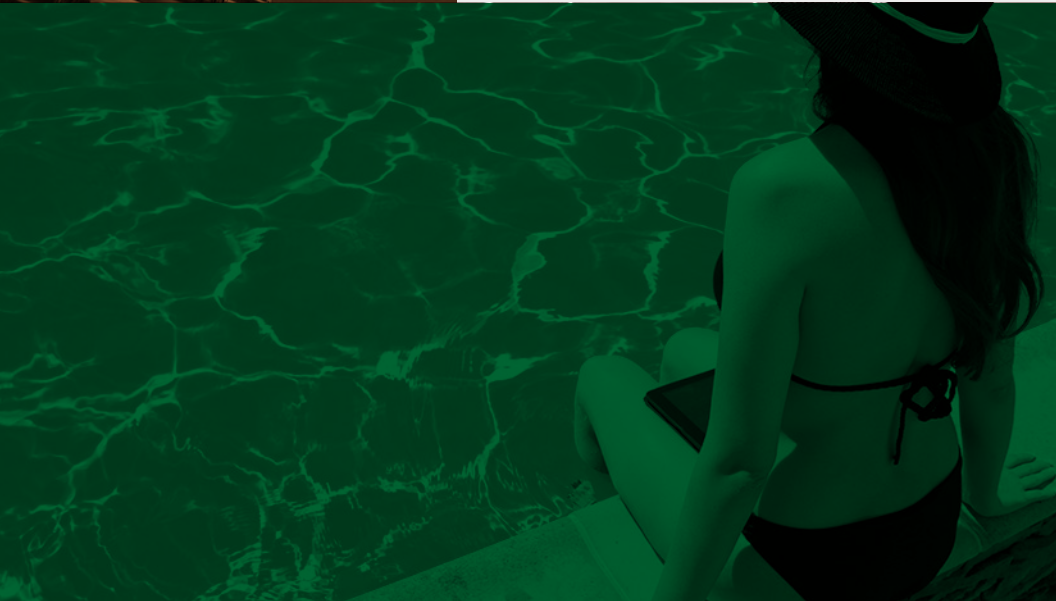
**XKAA**  
OCEAN VIEW CONDOS





Cada espacio fue pensado para crear un ambiente de total relajación.

*Each space will be designed to create an environment of total relaxation.*



# Amenidades

*Amenities*



Alberca infinity ocean view  
*Ocean view infinity pool*



Roof lounge



Parrilla  
*Grill*



Gimnasio  
*Gym*



Lobby



Sunrise yoga

**XKAA**

OCEAN VIEW CONDOS

X



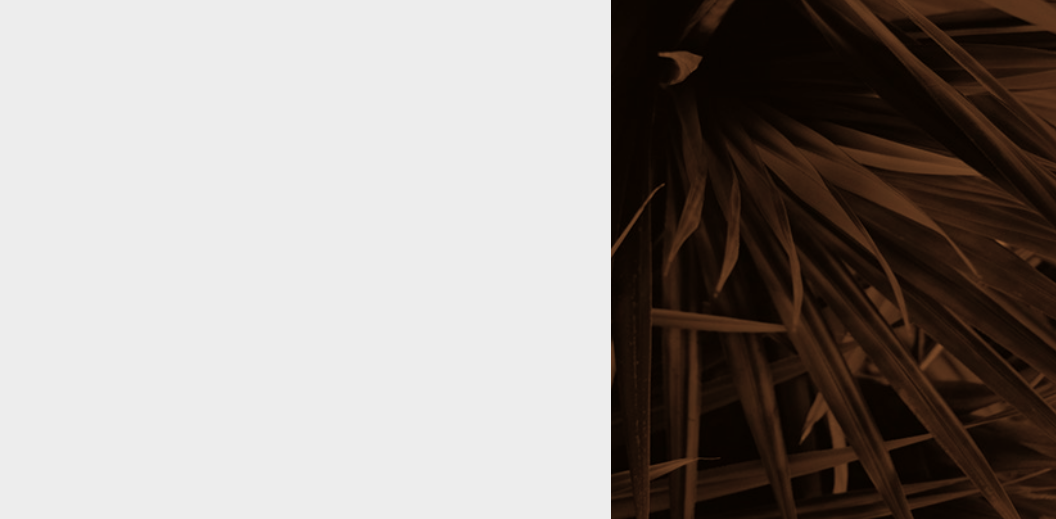
*Ocean View*



*Condos*

A

**XKAA**  
OCEAN VIEW CONDOS



# Highlights



**Roof top con hermosa vista al mar Caribe**  
*Amazing roof top view of the Caribbean Sea*



**A 500 mts de la playa**  
*1,640 ft away from the beach*



**Seguridad 24/7**  
*Security 24/7*



**Estacionamiento de bicicletas**  
*Bicycle parking*



**Entrega de unidad lista para usarse (Llave en mano)**  
*Unit ready-to-use at delivery (Turnkey)*



**Paneles solares**  
*Solar panels*



**Alberca en la terraza**  
*Roof top pool*



Roof lounge



**Wine bar**  
*Bar de vinos*



Área de parrilla  
*Grill area*





Sunrise yoga

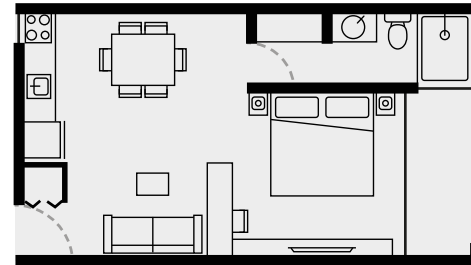
# Tipologías

Unit types

(A)

Estudio  
*Studio*

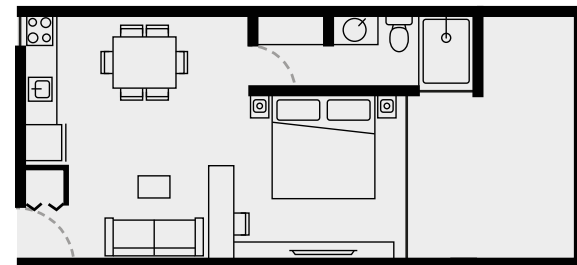
44.31 m<sup>2</sup>  
476.97 sqft



(B)

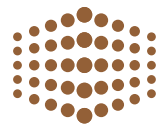
Estudio Garden  
*Studio Garden*

54.19 m<sup>2</sup>  
583.31 sqft





PROYECTO COMERCIALIZADO POR:  
*PROJECT COMMERCIALIZED BY:*



**Smart  
Investment  
Opportunities**