

TULUM

LUUM ZAMA

NUUCH

IDENTIFY WITH THE COMMUNITY





Acción Futura



(984) 859 1960



NUUCH

ALLURE



WE
BELONG
IN
PARADISE

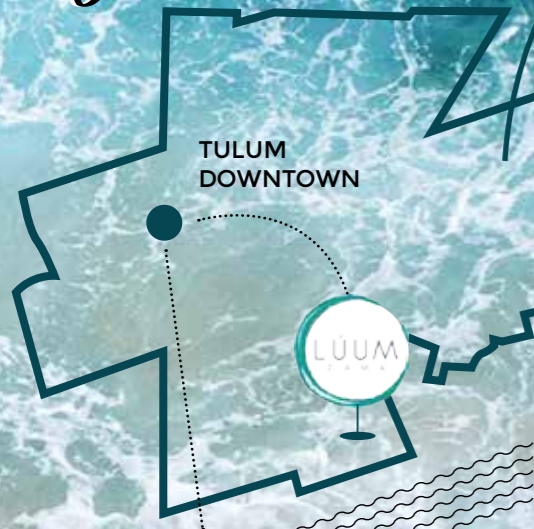


LUSH VEGETATION sitting upon a limestone reef along the side of the turquoise Caribbean Sea. Tulum is a unique place of magic, culture and mysticism hidden away from the hustle and bustle.

It offers to the travelers a relaxed getaway, with miles of pristine white sand and glistening emerald waters all surrounded by lush vegetation, incredible sunsets and unique experiences.

A combination of Mayan traditions and a strong sense of community make of Tulum a leading destination, not only in Mexico but in the world. It is ideal for those seeking luxury in nature.

great location!



Its privileged location is within walking distance to the beach, restaurants, cenotes, downtown Tulum and the wonderful archaeological site.



Lúum Zama is an exclusive 794,964 sq.ft. gated community situated within the Aldea Zamá subdivision, in a centrally located area in the heart of Tulum. Lúum Zama aims to protect nature, therefore...

60%

will be **strictly** preserved as jungle.



LÚUM
ZAMA

NUUCH
ALLURE

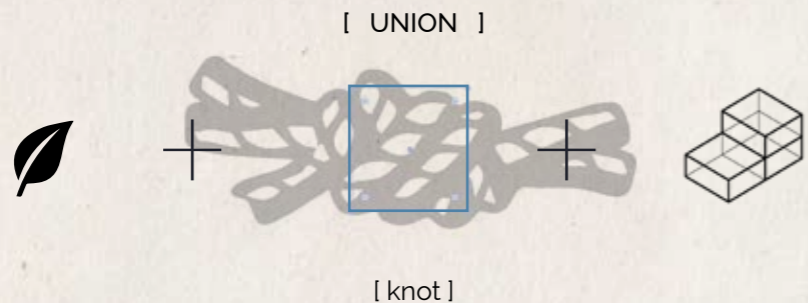
WE CREATE
A SENSE OF
COMMUNITY
MERGING
NATURE AND
ARCHITECTURE

WE ARE
PARADISE

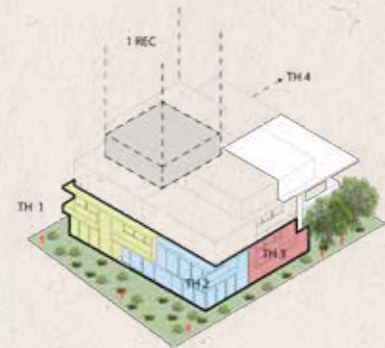
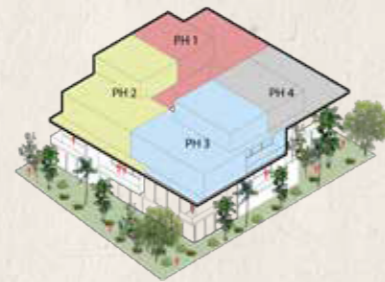


NUUCH
ALLURE

IDENTIFY WITH THE COMMUNITY



Intended to redefine the sense of belonging, **NUUCH** - Mayan for union - has been created to give a new meaning to aesthetic. In terms of architecture, **NUUCH** merges with the wonderful jungle and tropical surroundings of Tulum. This wonderful project invites the user to reconnect with nature through **luxurious boutique condos, which include lock-off units**, within the prestigious community of Lúum Zama.



A P A R T M E N T S

WE ALL BELONG IN PARADISE

INSPIRED by the latest trends of comfort, we created the beautiful townhouses, with very similar characteristics of single family homes, but more enchanting features. Our two-story townhouses have a private swimming pool and a balcony. Also, spacious bathrooms and a private garden. Each of the 4 townhouses are oriented to the corners of the building, therefore, residents will enjoy the most wonderful views of the jungle.

Every condo is connected through an interior green patio, which connects the community and invites the residents to experience the feeling of **BELONGING TO PARADISE.**

amenities

24-HOUR CONCIERGE

SOLAR PANELS (OPTIONAL)

PRIVATE SWIMMING POOLS

2-STORY TOWNHOUSES

ELEVATOR

CENTRAL GREEN PATIO

WITHIN LÚUM ZAMA

LOCK-OFF UNITS

FIRE PROTECTION SYSTEM

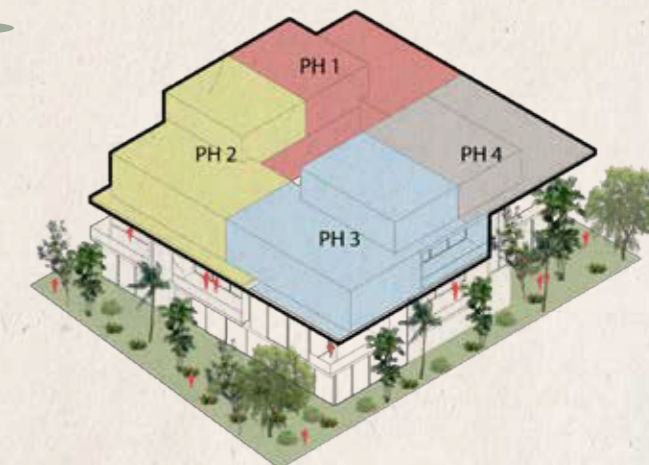


*Renders are images subject to change or modification.
They are illustrative.



PENTHOUSES

UNITS
5,6,7,8



PENTHOUSE PH 1

+ Living and dining room on the terrace
2-story penthouse
2 bedrooms
Roof garden with pergola and grill
Private swimming pool
2.5 bathrooms
Laundry closet

PENTHOUSE PH 2

+ Living and dining room on the terrace
1 bathroom on the terrace
2-story penthouse
2 bedrooms
Roof garden with pergola and grill
Private swimming pool
2 full bathrooms
2 half bathrooms
Laundry closet

PENTHOUSE PH 3 & 4

2-story penthouse
2 bedrooms
Roof garden with pergola and grill
Private swimming pool
2.5 bathrooms
Laundry closet



CAREFULLY DESIGNED TO FIT WITHIN THE JUNGLE SETTING, OUR TWO-STORY PENTHOUSES ARE IDEAL FOR THOSE LOOKING FOR COMFORT, PRIVACY AND INSPIRATION. GET READY TO BE DELIGHTED BY A MESMERIZING VIEW OF TULUM'S JUNGLE WHILE YOU ENJOY A LOVELY EVENING FROM YOUR ROOF GARDEN.

PENTHOUSE



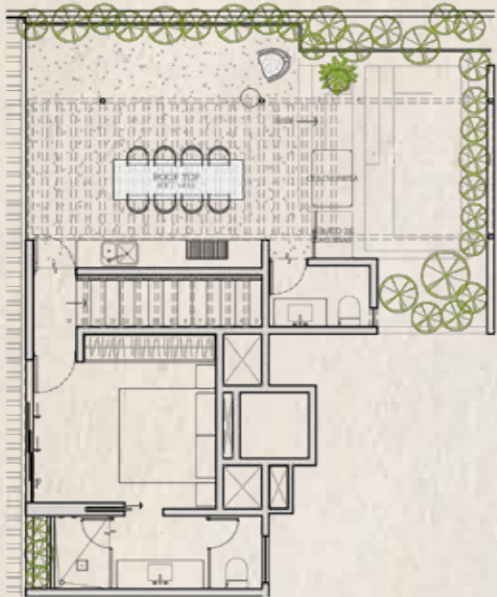


PENTHOUSES

1ST FLOOR



2ND FLOOR



PENTHOUSE
1

1ST FLOOR

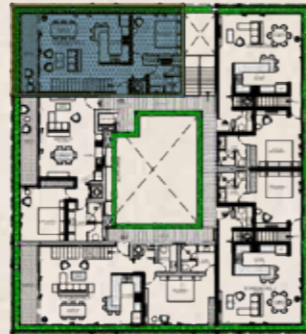


PENTHOUSE
2

2ND FLOOR



1ST FLOOR



2ND FLOOR



1ST FLOOR



2ND FLOOR

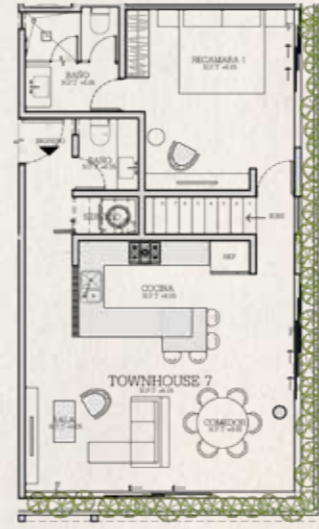


MERGED
WITH THE
JUNGLE

PENTHOUSES

PENTHOUSES
3 & 4

1ST FLOOR



2ND FLOOR



1ST FLOOR

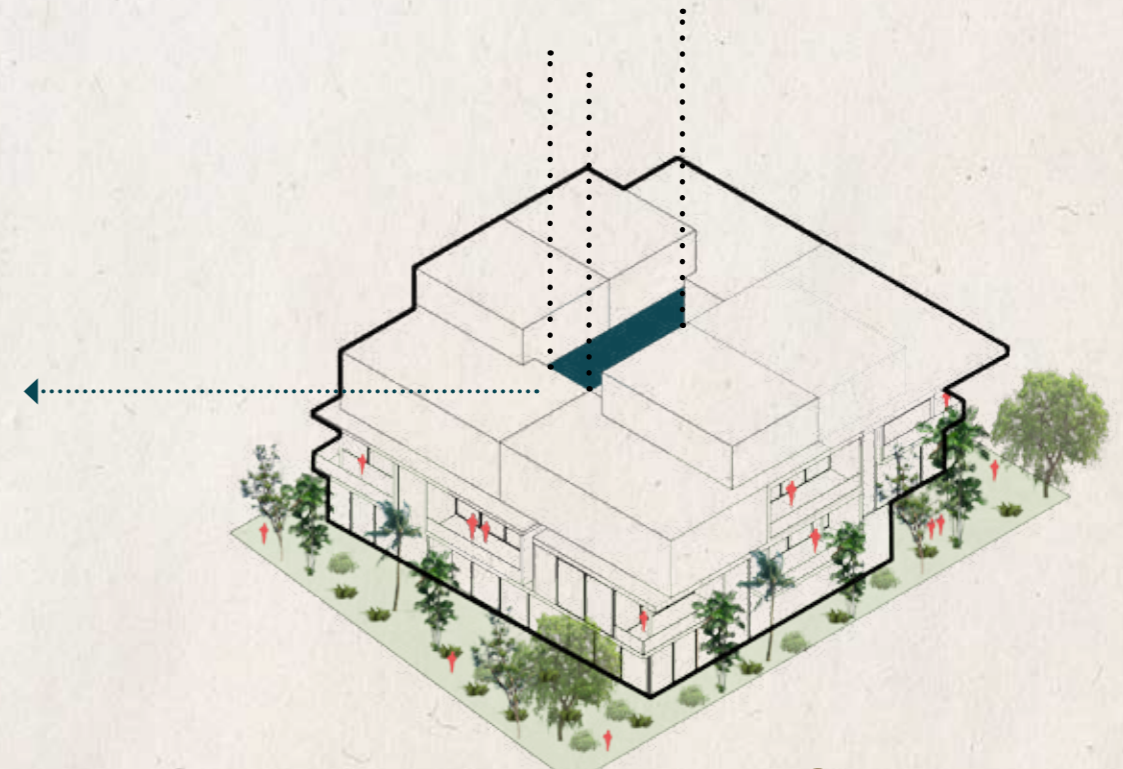


2ND FLOOR





GREEN CENTRAL PATIO



1,888.96 sq ft
of common areas

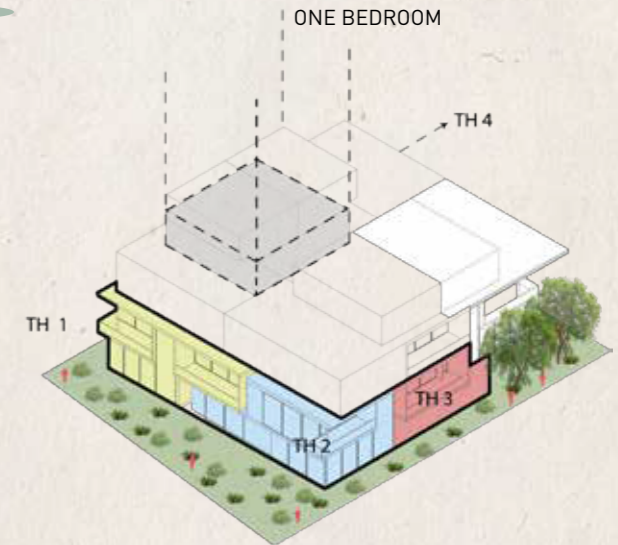


CORNER ORIENTATION

YOUR OWN PRIVATE JUNGLE

TOWNHOUSES

TH 1,2,3,4
One-Bedroom



TH 1,2,3,4

- 3 bedrooms (2 with terrace)
- 2-story townhouse
- Private garden
- Private swimming pool
- Lock-off
- 3 bathrooms
- Laundry closet

One-bedroom Apartment

- 1 bedroom
- Spacious living room
- Full kitchen
- Bathroom
- Laundry closet

TOWNHOUSE



TOWNHOUSES 1,2,3 & 4

Lower Level
Living Room / Kitchen / Private Pool

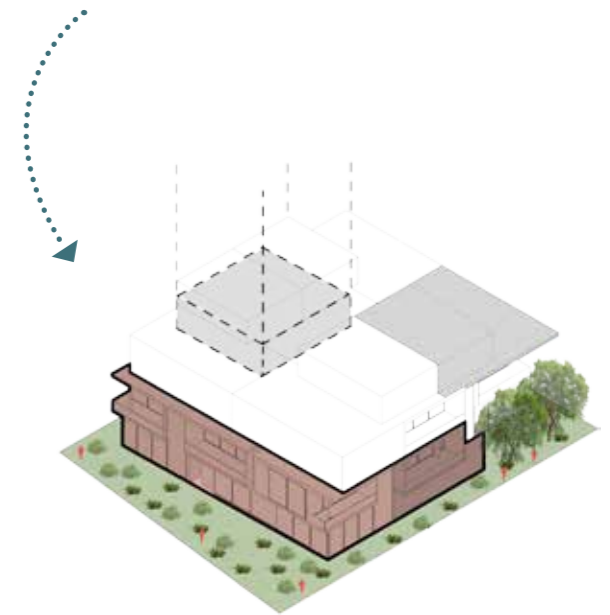


TOWNHOUSES 1,2,3 & 4
Lower Level



TOWNHOUSE 1
Bathroom in lock-off

TOWNHOUSE *Bathrooms*





Bedrooms in TH 1, 2, 3 & 4

ONE-BEDROOM APARTMENT



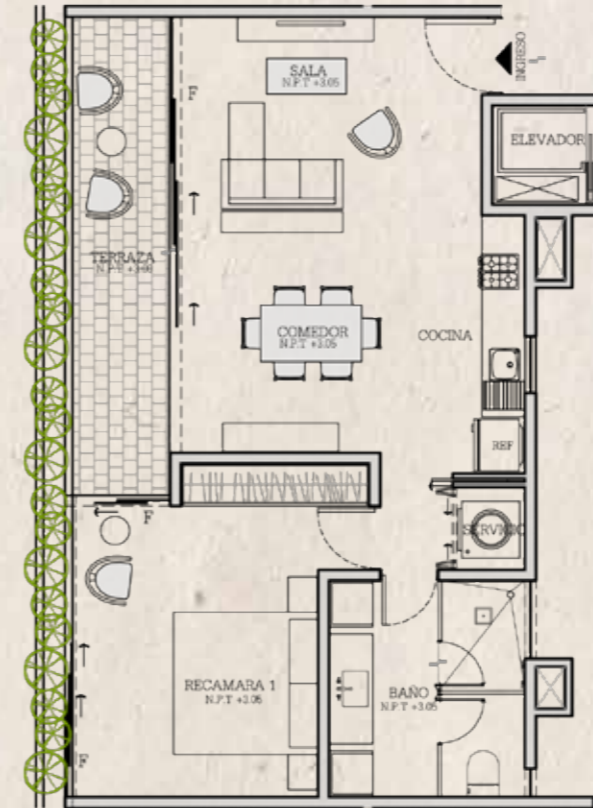
A P A R T M E N T S

1ST FLOOR



TOWNHOUSE
1

1ST FLOOR



ONE-BEDROOM
APARTMENT

2ND FLOOR



1ST FLOOR

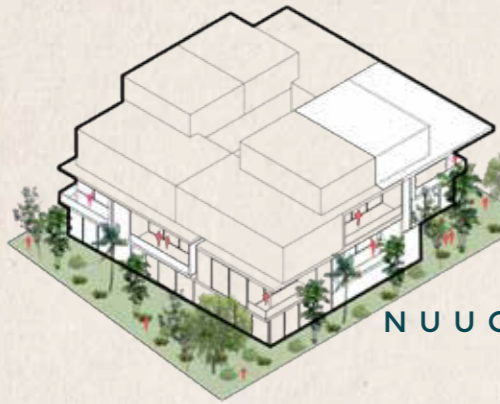


2ND FLOOR



1ST FLOOR





Square
feet
sq ft

NUUCH APARTMENTS



INTERIOR



Lock-Off



First Floor



Second Floor

TOTAL
INTERIOR
SQ.FT.

APARTMENTS

APARTMENTS	Lock-Off	First Floor	Second Floor	TOTAL INTERIOR SQ.FT.
TOWNHOUSE 1	✓	934	725	1,659
TOWNHOUSE 2	✓	965	830	1,795
TOWNHOUSE 3	✓	968	750	1,718
TOWNHOUSE 4	✓	909	683	1,592
ONE-BEDROOM 1		661		661
ONE BEDROOM 2		661		661
PENTHOUSE 1		812	439	1,251
PENTHOUSE 2		966	415	1,381
PENTHOUSE 3		919	331	1,250
PENTHOUSE 4		919	331	1,250



EXTERIOR



BALCONY



GARDEN



ROOFTOP

TOTAL
EXTERIOR
SQ.FT.

APARTMENTS

APARTMENTS	BALCONY	GARDEN	ROOFTOP	TOTAL EXTERIOR SQ.FT.
TOWNHOUSE 1	168	688		856
TOWNHOUSE 2	217	938		1,155
TOWNHOUSE 3	172	1102		1,274
TOWNHOUSE 4	169	290		459
ONE-BEDROOM 1	116			116
ONE-BEDROOM 2	106			116
PENTHOUSE 1	652		549	1,201
PENTHOUSE 2	652		549	1,201
PENTHOUSE 3	776		764	1,540
PENTHOUSE 4	776		764	1,540

EXPERIENCE
INSIDE LÚUM

Zama



- OPEN-AIR GYM
- SWIMMING POOL
- TEMAZCAL
- SPA
- AMPHITHEATER
- JOGGING TRAILS
- CLUB HOUSE
- VIEWPOINT
- WIFI
- KID'S PLAYGROUND





OUTSIDE LÚUM

Zama

Tulum, a city of wonders better known for its beaches, spectacular coastlines, and well-preserved Archaeological Site. Tulum is currently the ultimate paradise, and a top destination in Mexico due to its wonderful beaches.

Tulum offers eclectic and unique experiences, where the combination of the marvelous night life and the perfect weather are just the beginning to an unforgettable adventure.

This small fishing town invites you to have it both ways, a luxurious yet bohemian lifestyle.

Tulum also represents an oasis of exquisite gastronomy, old Mayan culture, must-see cenotes and hidden beaches. Tulum is an utopia every explorer has to discover,

Nature plays the most important role in this unique and exotic town, which is immersed in lush vegetation where each visitor creates their own reality.

A person is riding a bicycle on a beach at sunset. The sky is a mix of orange, red, and yellow, with the sun low on the horizon. The person is silhouetted against the bright sky. The ocean waves are visible in the background.

Invest
in

NUUCH

THE RIVIERA MAYA

and specifically Tulum, is among the top tourist destinations worldwide. **NUUCH** is without a doubt an ideal real estate project. This developments has been designed to allow the user to enjoy a life immersed in the jungle without sacrificing **exclusivity, privacy and luxury**.

NUUCH offers to its owners a **lock-off system**, which allows to split their unit into two separated condos. This amazing feature, under a vacation rental scheme, is definitely an excellent way to **generate an extra income**. In **NUUCH** your investment is safe.

*NUUCH does not include property management.

DEVELOPERS

ACCIÓN FUTURA
GRUPO R4
STUDIO ARQUITECTOS



Grupo R4

For the last 25 years, Grupo R4 has been established as one of the best options for real estate services in southeastern Mexico. It has participated in several divisions such as construction, development, financing and marketing.

Their companies have participated in over 200 independent and joint projects, having always in mind high standards and values such as security, responsibility, and market knowledge. Their companies are in constant growth, offering a variety of products and services in a professional way. Grupo R4 aims to provide to their costumers a world-class service.

 Best Design for Artia Development in Tulum /2017

Acción Futura

Acción Futura

Acción Futura is characterized by prioritizing quality in their processes. Always emphasizing on the protection of the environment, their projects deliver an excellent quality-price ratio and reflect their expertise in construction, architecture, installation and infrastructure.



Studio Arquitectos

Studio Arquitectos considers that the best part of living and working in the magical Tulum, surrounded by the beach and the jungle, is their biggest inspiration. Studio Arquitectos is committed to create projects in harmony with nature, and carrying out in the best possible way towards maintaining a balance between construction and vegetation.



AWARDS

Gold medal in I Bienal del Caribe Mexicano / 2015

Silver medal in I Bienal del Caribe Mexicano / 2015

Silver medal in XIV Bienal Nacional de Arquitectura / 2015

Silver medal in I Bienal del Sureste Mexicano / 2016

Silver medal in II Bienal del Caribe Mexicano / 2017

Silver medal in II Bienal Nacional del Caribe Mexicano / 2017



*Renders are images subject to change or modification. They are illustrative.

We
ALL
BELONG IN
paradise





NUUCH

ALLURE

TULUM | LUÚM ZAMÁ

—
WWW.NUUCH.MX

IDENTITY *WITH* COMMUNITY