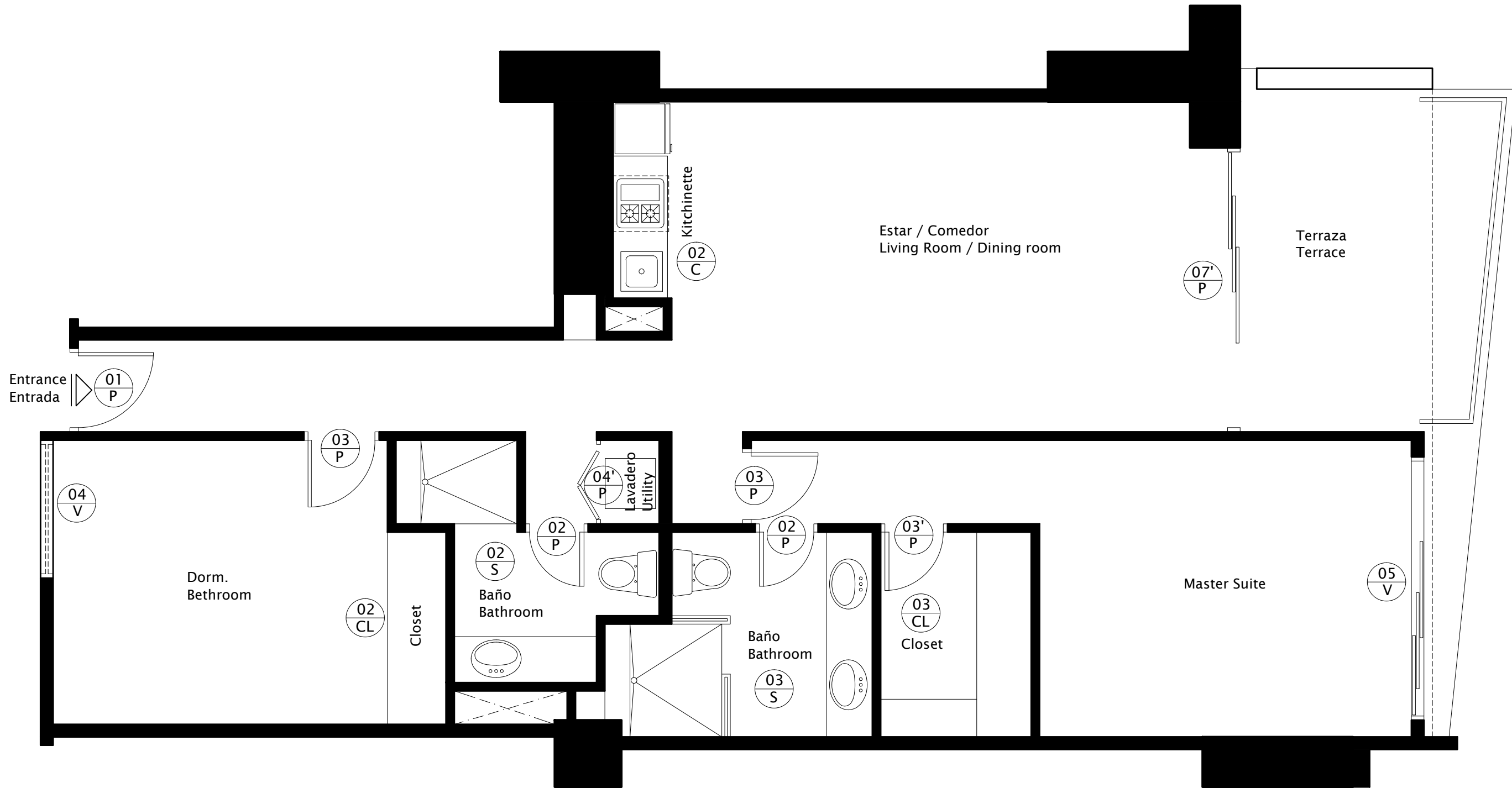
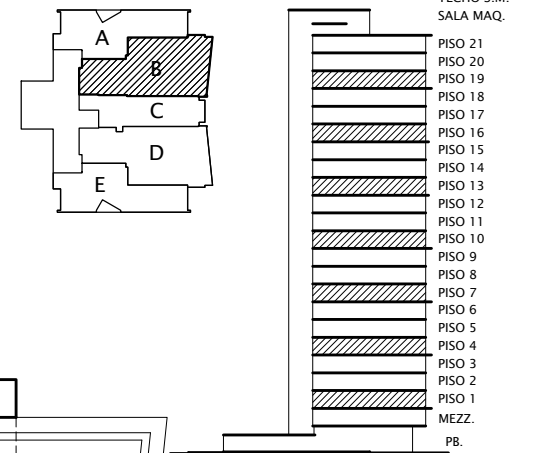


Unit B  
 2 Room / 2 Bathroom  
 Dining / Kitchenette  
 Utility / Terrace  
 AC Area = 1093.70 ft<sup>2</sup>  
 Terrace area = 142.51 ft<sup>2</sup>  
 Total Area = 1236.30 ft<sup>2</sup>

Unidad B  
 2 Dormitorios + 2 Baños  
 Estar / Comedor / Kitchenette  
 Lavadero / Terraza  
 Area AC = 101.61 m<sup>2</sup>  
 Area Terraza = 13.24 m<sup>2</sup>  
 Area Total = 114.86 m<sup>2</sup>



UNIDAD "B"

