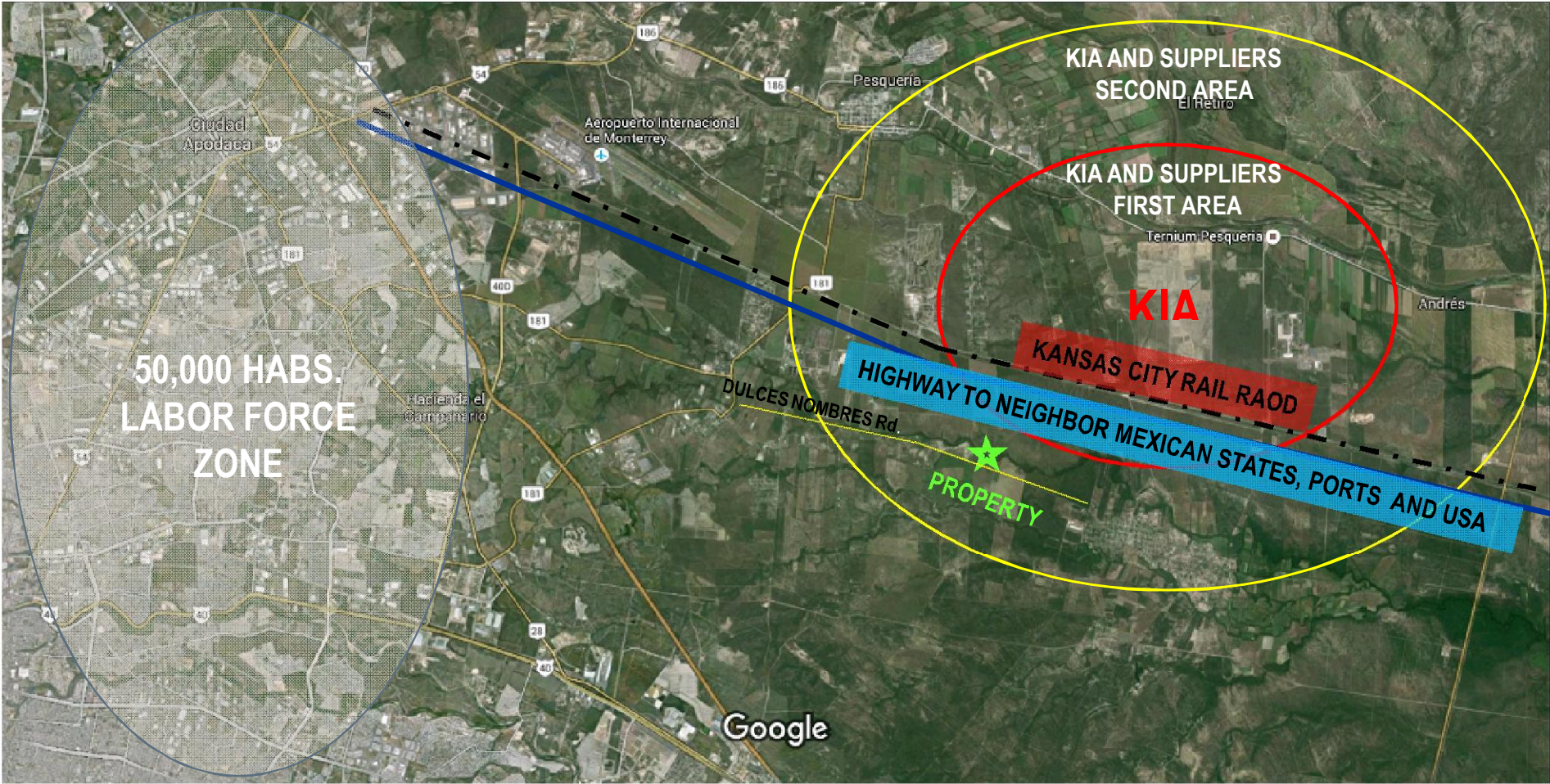


WHY HERE AT DULCES NOMBRES RD.

Suppliers Warehouse Park

Why here at Dulces Nombres Rd.

Google Maps Google Maps



Suppliers Warehouse Park

Actual trends in automotive and supply chain based on flexibility and agility principles to get a competitive advantage in global automotive benchmark, focuses at the “build-to-order” supply management concept, using support information technologies tools to flexible and efficient design of suppliers, production and logistic process.

Our property, the answer to any OEM’s, or any supplier, its located in the heart of the development area, and represent one of the nearest access to the OEM while offering strategic connectivity through the Highways and Railroad between Monterrey, Neighbor Mexican States, Ports and United States.

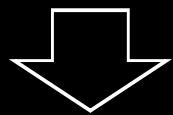
" “The goal for the OEM ’s it’s have “best in class” suppliers”

WHY HERE? YOUR WAREHOUSE SITE SELECTION AT DULCES NOMBRES ROAD SUPPLIERS WAREHOUSE PARK

THE GOAL FOR ANY OEM'S IS HAVE "BEST IN CLASS" SUPPLIERS

• Key Criteria

(Cost vs. Service Reliability)



(Warehouse Operations Infrastructure and Maintenance)



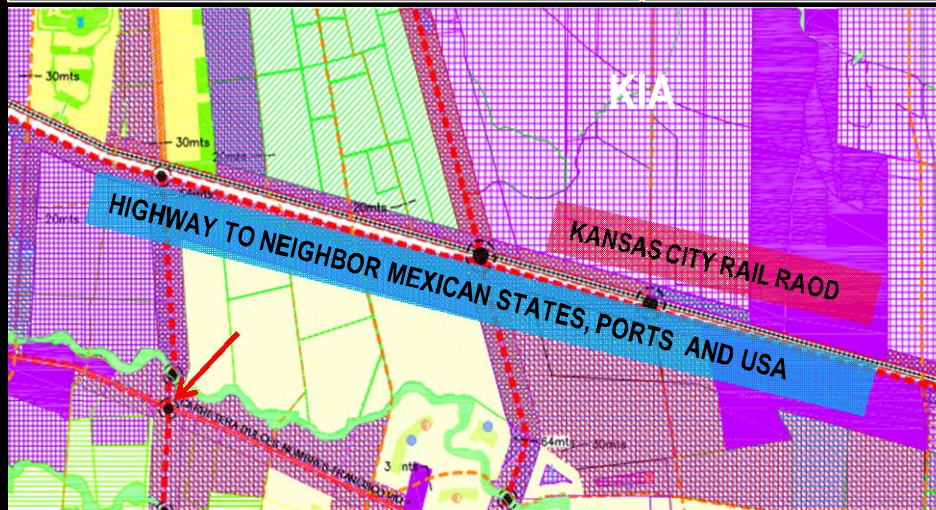
Service Ability
(Proximity to Customers)

• Additional Factors

1. Availability of Transportation
2. Infrastructure
 - Roads
 - Power
 - Water
 - Other utilities
3. Availability of Skilled Manpower
4. Government Regulations
5. Strategic Factors – monitoring & control, pre- determined sites, future plans.
6. Environmental Factors

• Answer to any Supplier

1. What is the need for the Warehouse?
2. What business is it catering to?
3. Where should the warehouse be located?
4. Is the warehouse location well connected?
5. Is there good telecommunication connection?
6. What should be the size of the Warehouse?
7. What should be the height?
8. What are the different SKUs expected to be stocked up at the Warehouse?
9. What are the markets or locations that the Warehouse would be catering to?
10. What should be the stocking policies?
11. What should be the replenishment policies?
12. What should be the Health and Safety policies?
13. What should be the Security arrangements

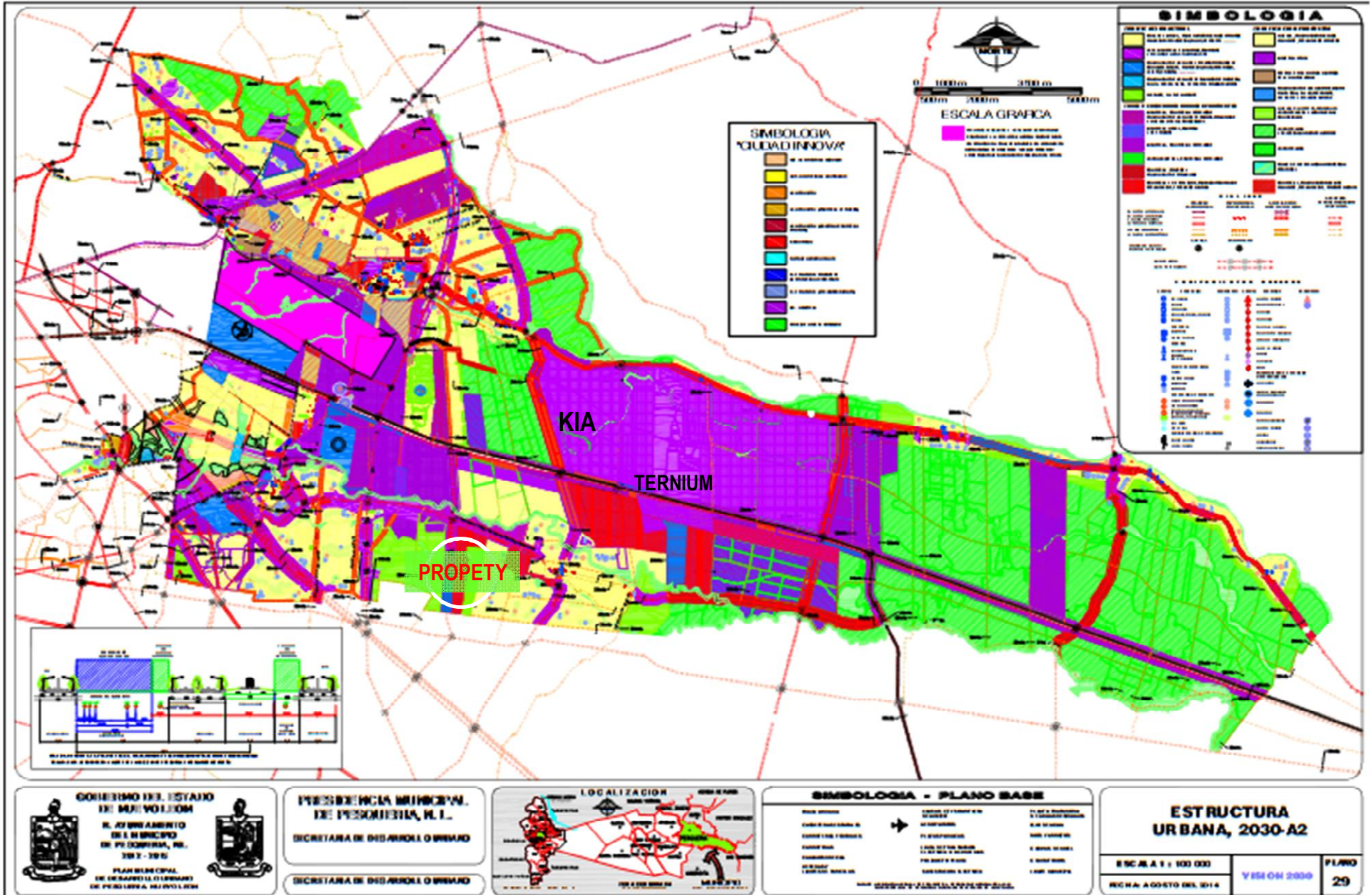


It consists of several warehouse buildings complex, in which suppliers will produce or pre-build parts and feed them into OEM's final assembly buildings.



SUPPLIERS AND PARTNERS WAREHOUSE PARK

MUNICIPAL PLAN

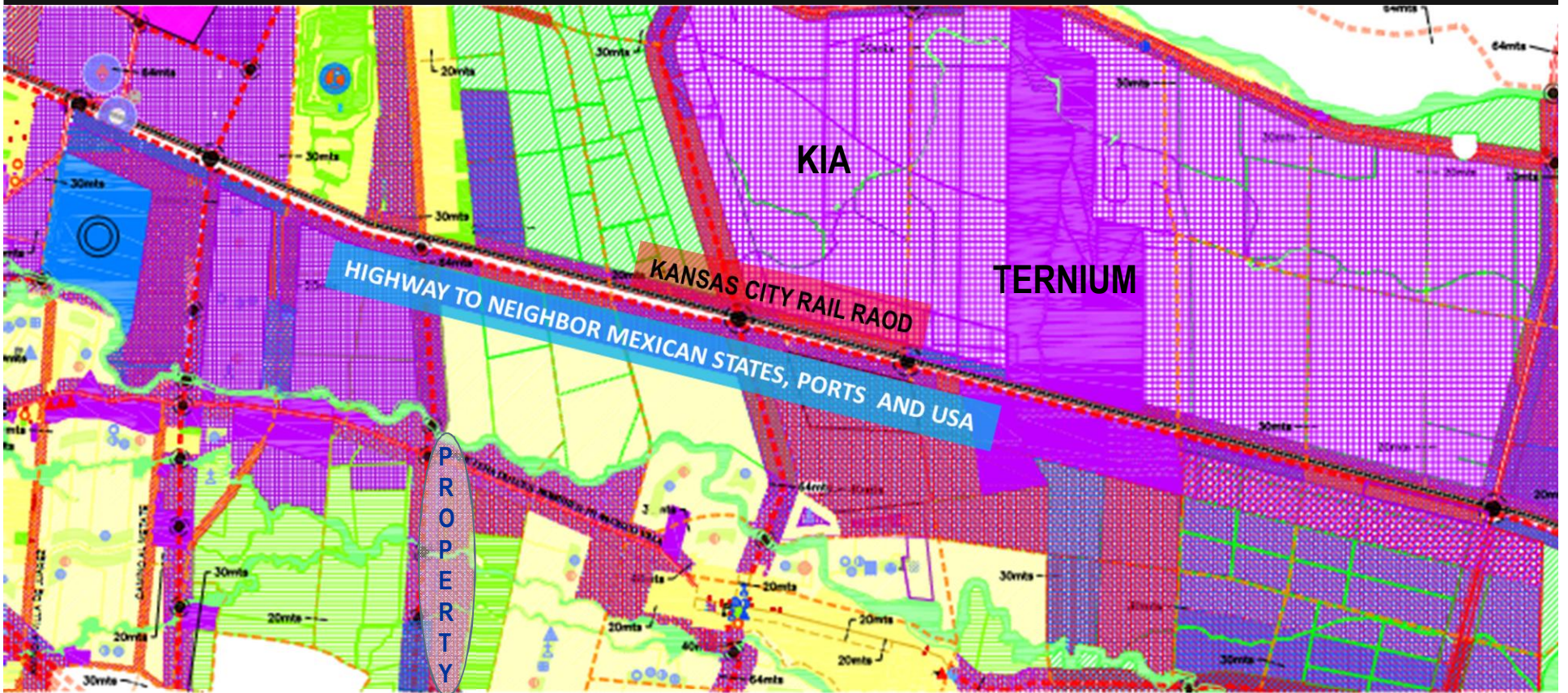


PROTOTIPO 1

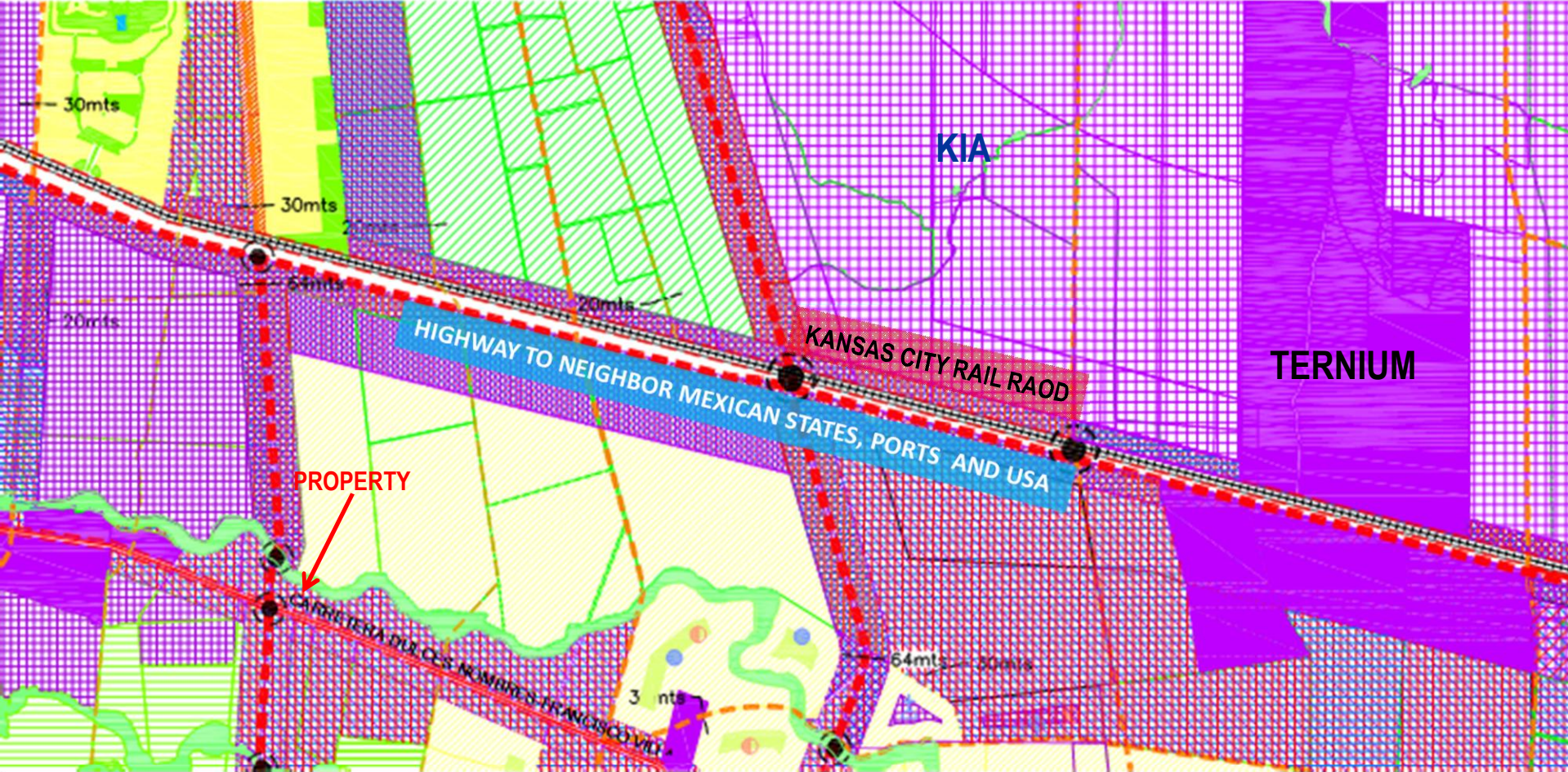


It consists of several warehouse buildings complex, in which suppliers will produce or pre-build parts and feed them into OEM's final assembly buildings

Suppliers Warehouse Park



Suppliers Warehouse Park



Suppliers Warehouse Park

TECHNICAL SPECS

Property is 17,3 acres from a total land area of 370,650 acres

Property is the best solution for suppliers to find access to the same advantages as the OEM in terms of basic infrastructure:

- Water
- Electricity
- Telecommunications
- Connectivity