

# CUICUILCO 72



# CUICUILCO 72

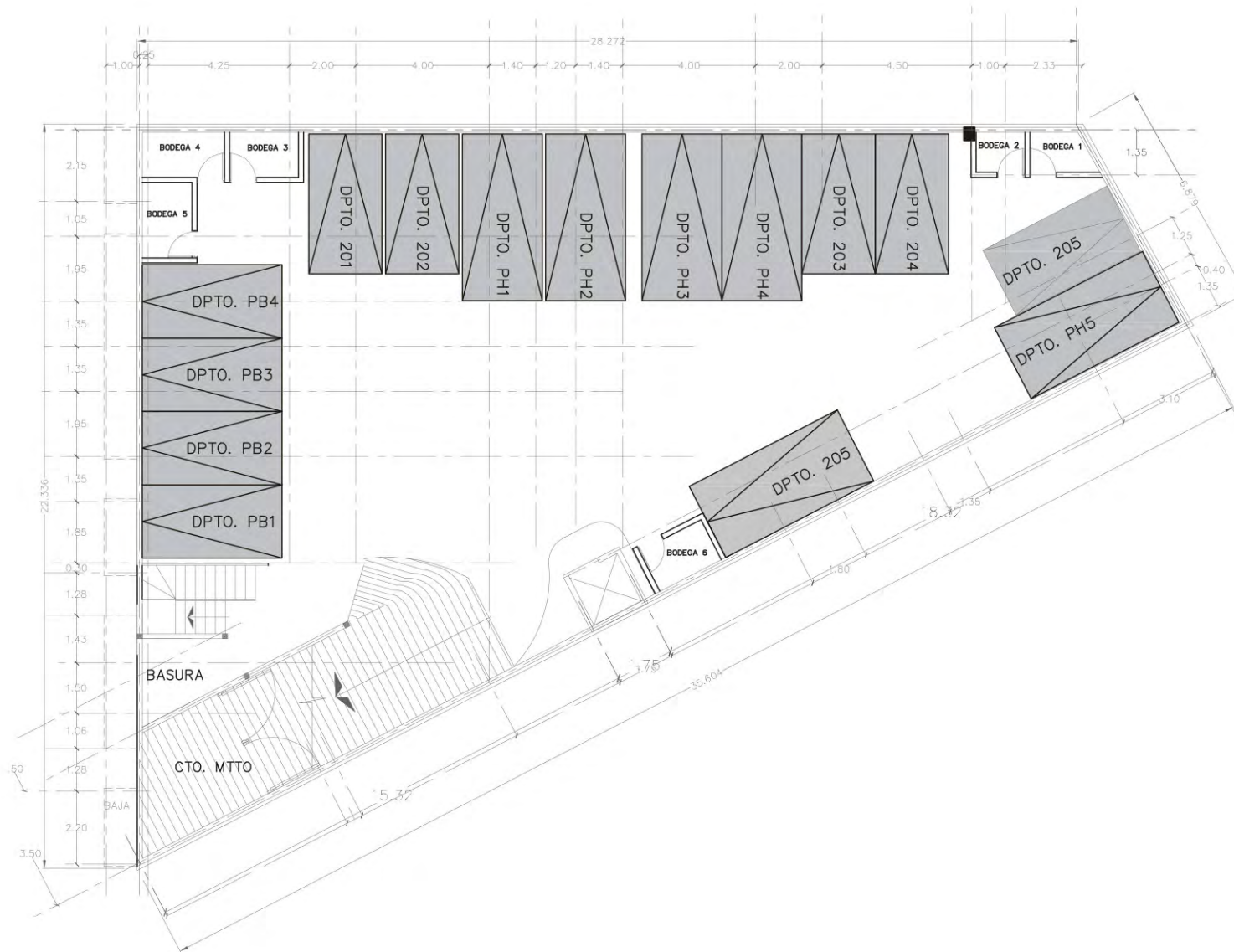
Cuicuilco No. 72 Col. Letrán Valle.



- Sala-comedor
- Cocina
- Area de lavado
- 2 o 3 recámaras
- 2 baños completos
- Balcón
- Estacionamiento
- Elevador
- Caseta de vigilancia

**Bodegas y cajones  
para elevautos disponibles.**





# CUICUILCO 72

depto  
**pb2**  
70.00m<sup>2</sup>

depto  
**pb1**  
69.20m<sup>2</sup>

depto  
**pb3**  
74.81m<sup>2</sup>  
+ balcón 17m<sup>2</sup>

depto  
**pb4**  
72.00m<sup>2</sup>  
+ balcón 4.43m<sup>2</sup>



# CUICUILCO 72

depto  
**103**  
72.33m<sup>2</sup>  
+ balcón 3.4m<sup>2</sup>

depto  
**102**  
71.63m<sup>2</sup>  
+ balcón 3.4m<sup>2</sup>

depto  
**101**  
69.71m<sup>2</sup>  
+ balcón 4m<sup>2</sup>



depto  
**104**  
74.81m<sup>2</sup>  
+ balcón 17m<sup>2</sup>

depto  
**105**  
72.00m<sup>2</sup>  
+ balcón 4.43m<sup>2</sup>

# CUICUILCO 72

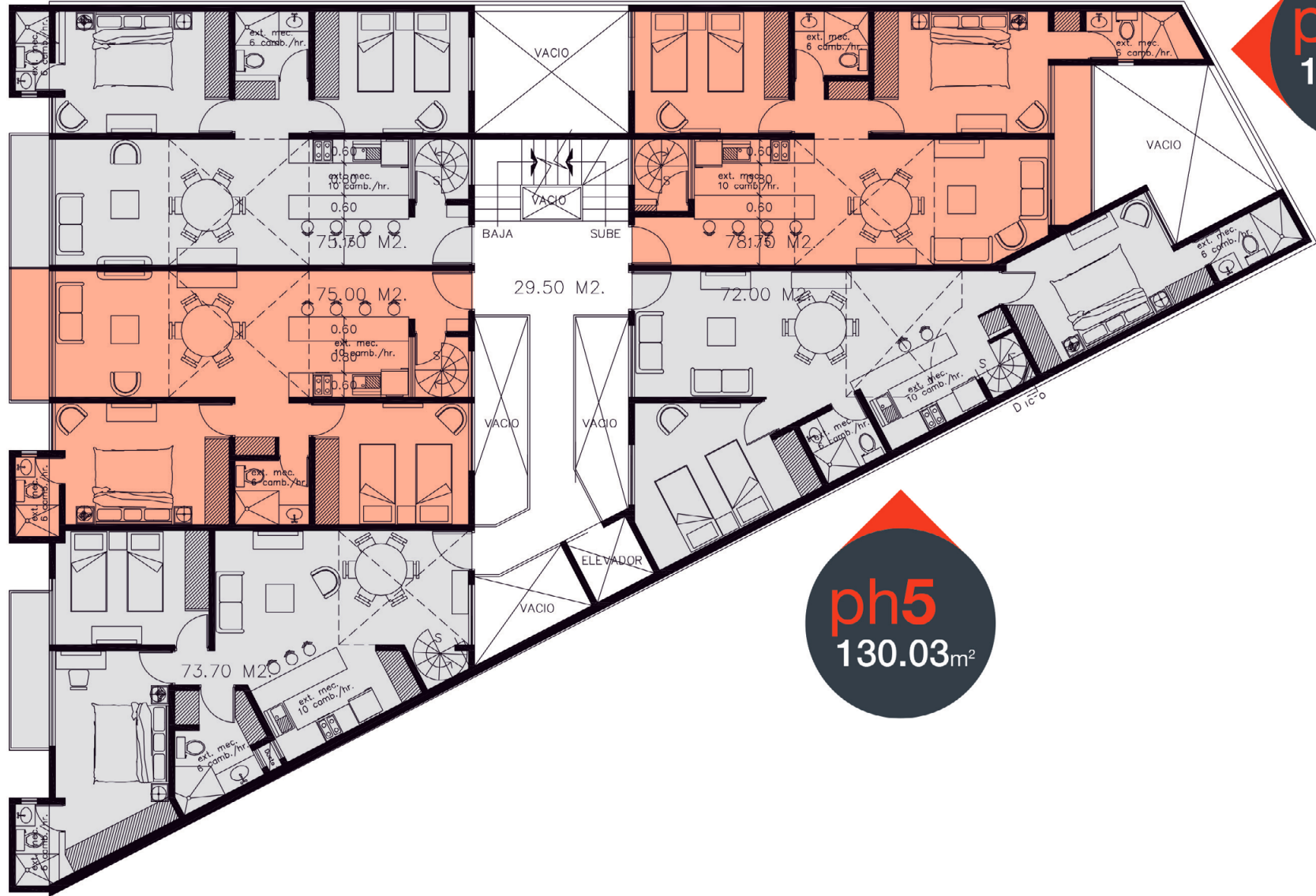
**ph3**  
131.6m<sup>2</sup>

**ph2**  
125.1m<sup>2</sup>

**ph1**  
117.06m<sup>2</sup>

**ph4**  
129.88m<sup>2</sup>

**ph5**  
130.03m<sup>2</sup>



**ph3**  
roof garden  
21.00m<sup>2</sup>

**ph2**  
roof garden  
20.80m<sup>2</sup>

**ph1**  
roof garden  
26.20m<sup>2</sup>



**ph4**  
roof garden  
27.40m<sup>2</sup>

**ph5**  
roof garden  
14.60m<sup>2</sup>



# CUICUILCO 72



TIPO 1

# CUICUILCO 72



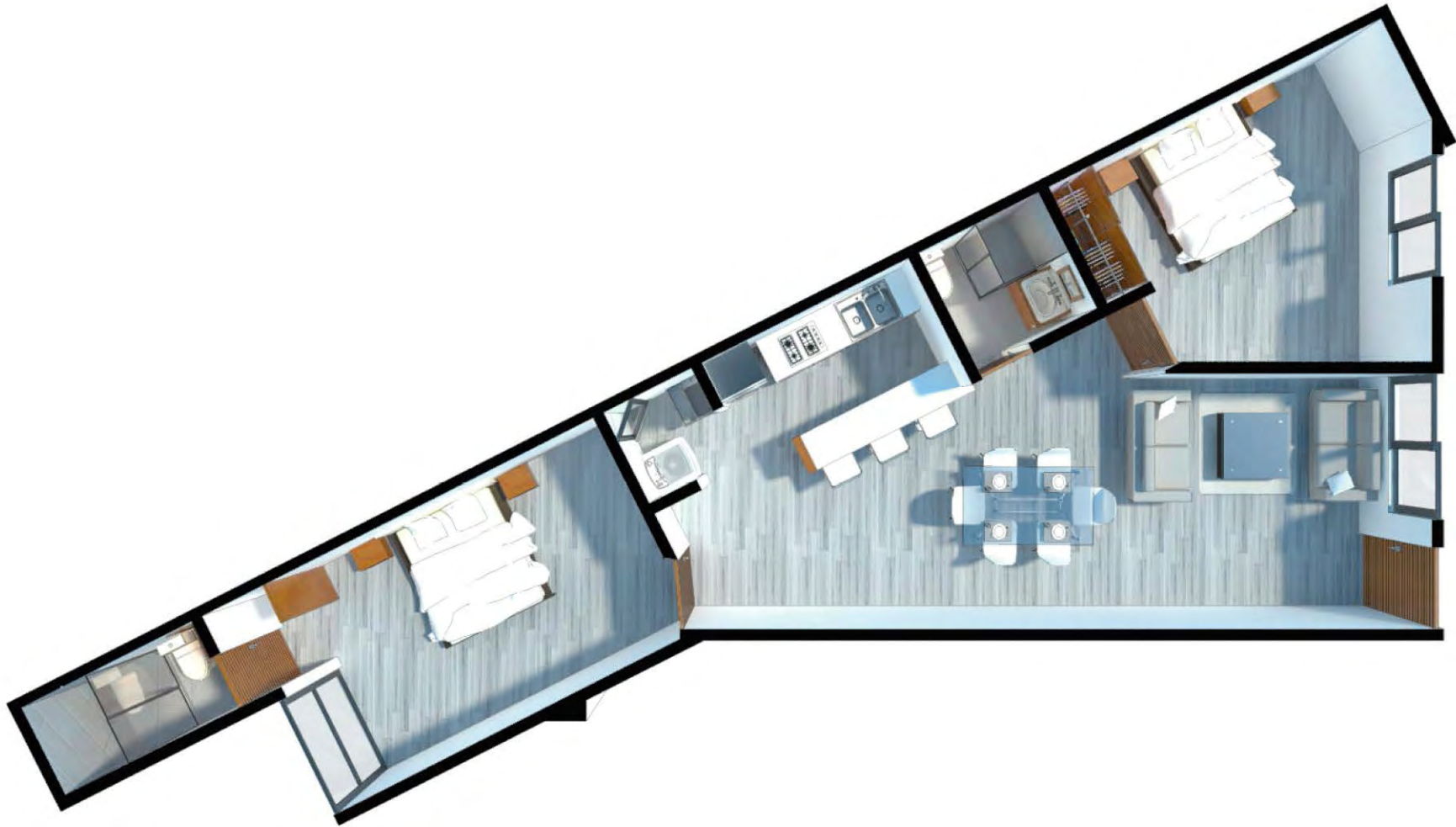
TIPO 2 Y 3 (PB con 1 baño y sin balcón)

# CUICUILCO 72



TIPO 4

# CUICUILCO 72



TIPO 5



COCINA TIPO 1



El lugar ideal para vivir en la ciudad.



Cuicuilco No. 72 Col. Letrán Valle. T: 5135 3964



**BAU**  
CENTER  
• INMOBILIARIA •

DEPTO	m <sup>2</sup> DEPTO.	m <sup>2</sup> BALCONES	m <sup>2</sup> TOTAL TECHADO	PRECIO/M2	m <sup>2</sup> ROOF GARDEN	PRECIO/m <sup>2</sup>	m <sup>2</sup> TOTAL DEPTO.	\$ PRECIO DEPTO
PB1	69.20		69.20	\$45,000			69.20	\$3,217,800
PB2	70.00		70.00	\$45,000			70.00	\$3,255,000
PB3	74.81	17.00	91.81	\$45,000			91.81	\$3,832,950
PB4	72.00	4.43	76.43	\$45,000			76.43	\$3,413,890
101	69.71	3.99	73.70	\$45,500			73.70	\$3,390,065
102	71.63	3.38	75.01	\$45,500			75.01	\$3,465,923
103	72.33	3.38	75.71	\$45,500			75.71	\$3,498,823
104	74.81	3.89	78.70	\$45,000			78.70	\$3,550,730
105	72.00	4.43	76.43	\$45,000			76.43	\$3,433,890
PH1	117.06	3.99	121.05	\$45,000	26.20	\$22,500	147.25	\$6,251,215
PH2	125.12	3.38	128.50	\$45,000	20.80	\$22,500	149.30	\$6,488,753
PH3	131.40	3.38	134.78	\$45,000	21.00	\$22,500	155.78	\$6,501,438
PH4	129.88	3.89	133.77	\$44,500	27.40	\$22,250	161.17	\$6,734,150
PH5	130.03	4.43	134.46	\$44,500	14.60	\$22,250	149.06	\$6,459,070
<b>Total:</b>	<b>1279.98</b>	<b>59.54</b>	<b>1339.52</b>		<b>110.00</b>		<b>1449.52</b>	