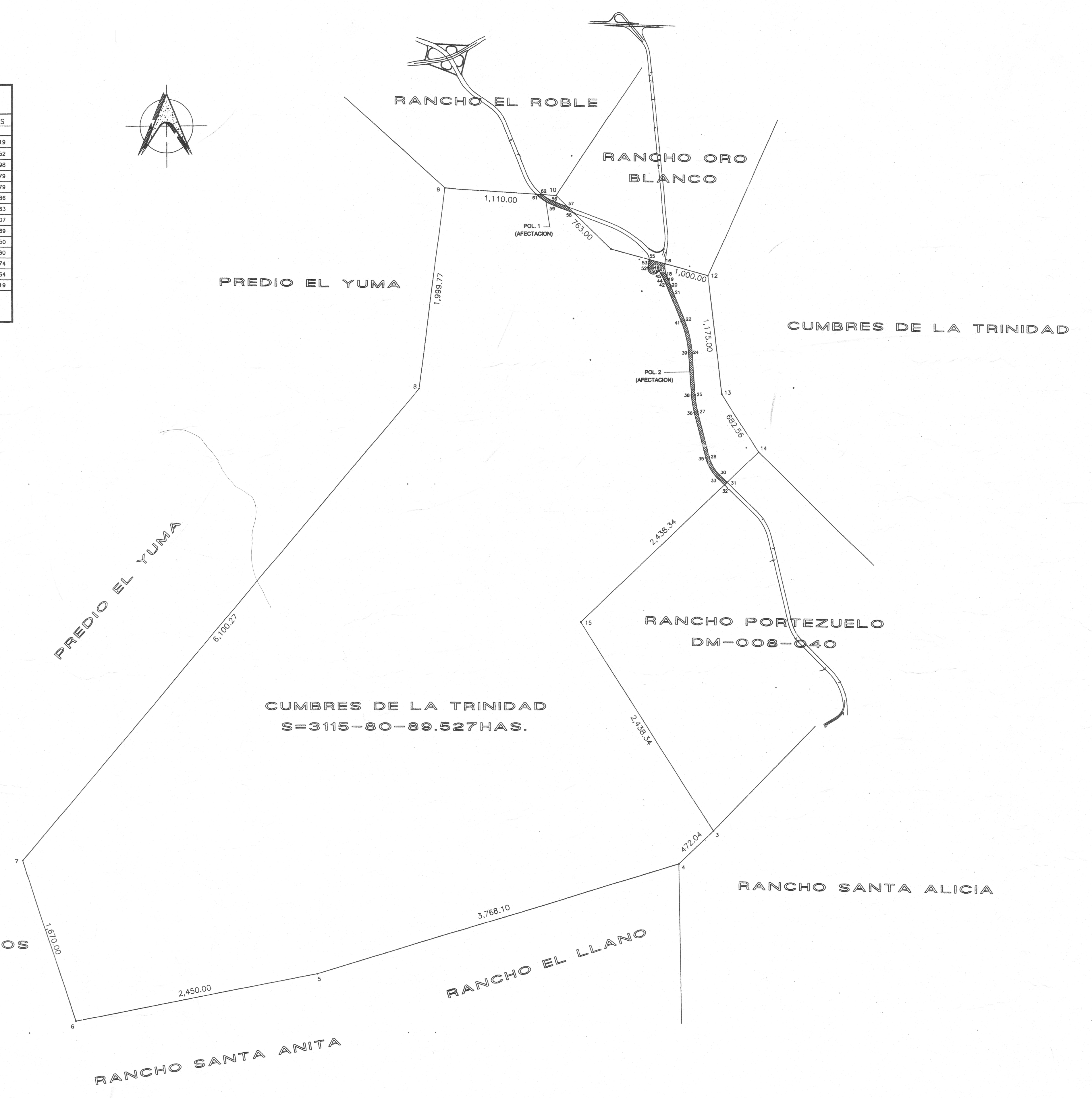
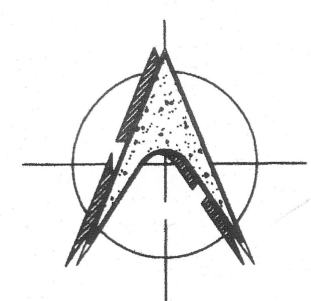


CUADRO DE CONSTRUCCION AFECTACION POR VIALIDAD(POL.1)						
LADO	RUMBO	DISTANCIA	V	C O O R D E N A D A S		
EST	PV			Y	X	
56	57	S 69°25'50.03" E	135.422	57	3,591,343.0095	521,647.8004
57	58	S 45°57'02.82" E	90.356	58	3,591,280.1874	521,712.7429
58	59	N 69°25'50.03" W	218.296	59	3,591,356.8841	521,508.3636
59	61	N 5°51'07.39" W CENTRO DE CURVA DELTA = 23°25'20" RADIO = 518.000	207.936	61	3,591,467.5284 LONG. CURVA = 289.308 SUB.TAN. = 05.128	521,332.3088 521,690.3588
61	62	S 86°10'03.03" E	59.509	62	3,591,463.5509	521,391.6649
62	56	S 6°34'11.25" E CENTRO DE CURVA DELTA = 17°43'17.56" RADIO = 482.000	148.489	56	3,591,390.5880 LONG. CURVA = 149.082 SUB.TAN. = 75.141	521,521.0119 521,690.3588
SUPERFICIE = 12,836.616 m2 (SUPERFICIE = 1-28-36.616 HAS.)						

CUADRO DE CONSTRUCCION POLIGONO CUMBRES DE LA TRINIDAD						
LADO	RUMBO	DISTANCIA	V	C O O R D E N A D A S		
EST	PV			Y	X	
14	15	S 46°39'47.80" W	2,438.342	15	3,588,917.5125	523,548.2119
15	3	S 32°36'51.94" E	2,438.342	3	3,587,244.1158	521,774.7252
3	4	S 46°39'47.51" W	472.043	4	3,584,866.3034	522,745.6179
4	5	S 73°15'10.08" W	3,768.102	5	3,583,780.5266	519,137.3379
5	6	S 79°01'57.01" W	2,449.998	6	3,583,314.4094	516,732.0886
6	7	N 18°12'02.99" W	1,670.000	7	3,584,900.8554	516,210.4663
7	8	N 40°24'49.08" E	6,100.274	8	3,589,545.5072	520,165.2807
8	9	N 07°28'32.00" E	1,999.788	9	3,591,528.2780	520,425.4569
9	10	S 86°10'03.03" E	1,110.000	10	3,591,454.0859	521,532.9750
10	11	S 45°57'02.82" E	763.000	11	3,590,923.5901	522,081.3760
11	12	S 74°42'02.96" E	1,000.000	12	3,590,659.7308	523,045.9374
12	13	S 06°34'02.99" E	1,174.999	13	3,589,492.4419	523,180.3264
13	14	S 32°36'51.95" E	682.557	14	3,588,917.5125	523,548.2119
SUPERFICIE = 31,158,089.527 m2 (SUPERFICIE = 3115-80-89.527 HAS.)						

CUADRO DE CONSTRUCCION AFECTACION POR VIALIDAD(POL.2)						
LADO	RUMBO	DISTANCIA	V	C O O R D E N A D A S		
EST	PV			Y	X	
16	18	S 08°22'05.82" E CENTRO DE CURVA DELTA = 28°12'14.72" RADIO = 248.000	120.850	18	3,590,657.4661 LONG. CURVA = 122.079 SUB.TAN. = 42.303	522,634.7291 522,863.9003
18	19	S 22°28'13.28" E	35.207	19	3,590,624.9325	522,648.1852
19	20	S 22°28'13.28" E	72.271	20	3,590,558.1481	522,675.8078
20	21	S 19°59'01.65" E	80.673	21	3,590,482.3325	522,703.3781
21	22	S 22°28'13.28" E	285.932	22	3,590,218.1094	522,812.6628
22	24	S 13°15'39.26" E CENTRO DE CURVA DELTA = 18°25'8.03" RADIO = 1,018.000	325.850	24	3,589,900.9484 LONG. CURVA = 327.257 SUB.TAN. = 65.052	522,887.4080 521,871.9520
24	25	S 04°03'05.24" E	415.920	25	3,589,486.0677	522,916.7937
25	27	S 08°57'12.66" E CENTRO DE CURVA DELTA = 07°48'14.86" RADIO = 982.000	167.829	27	3,589,320.2832 LONG. CURVA = 168.034 SUB.TAN. = 84.223	522,942.9136 523,896.3397
27	28	S 1°51'20.13" E	462.885	28	3,588,870.8671	523,053.7632
28	30	S 30°09'01.77" E CENTRO DE CURVA DELTA = 32°35'23.22" RADIO = 392.000	214.364	30	3,588,685.5045 LONG. CURVA = 217.281 SUB.TAN. = 111.668	523,161.4325 523,424.6479
30	31	S 46°28'43.41" E	96.836	31	3,588,618.7800	523,231.6114
31	32	S 46°39'47.80" W	36.053	32	3,588,594.0373	523,206.3888
32	33	N 46°28'43.41" W	94.881	33	3,588,659.4146	523,136.6269
33	35	N 30°09'01.77" W CENTRO DE CURVA DELTA = 32°35'23.22" RADIO = 418.000	234.566	35	3,588,862.2460 LONG. CURVA = 237.758 SUB.TAN. = 22.191	523,018.8107 523,424.6479
35	36	N 13°51'20.13" W	462.885	36	3,589,311.6621	522,907.9611
36	38	N 08°57'12.66" W CENTRO DE CURVA DELTA = 09°48'14.86" RADIO = 1,018.000	173.982	38	3,589,483.5242 LONG. CURVA = 174.194 SUB.TAN. = 67.310	522,880.8837 523,896.3397
38	39	N 04°03'05.24" W	415.920	39	3,589,898.4049	522,851.4980
39	41	N 13°15'39.26" W CENTRO DE CURVA DELTA = 18°25'8.03" RADIO = 982.000	314.326	41	3,590,204.3500 LONG. CURVA = 315.864 SUB.TAN. = 59.215	522,779.3960 521,871.9520
41	42	N 22°28'13.28" W	428.136	42	3,590,599.9823	522,615.7595
42	44	N 24°53'01.16" W CENTRO DE CURVA DELTA = 04°49'35.77" RADIO = 248.000	20.885	44	3,590,618.9287 LONG. CURVA = 20.892 SUB.TAN. = 0.452	522,606.9714 522,386.5883
44	45	N 27°17'49.04" W	72.384	45	3,590,683.2522	522,573.7760
45	47	N 28°19'18.86" W CENTRO DE CURVA DELTA = 02°25'59.62" RADIO = 978.500	35.006	47	3,590,714.0681 LONG. CURVA = 35.008 SUB.TAN. = 7.508	522,557.1881 521,704.2402
47	48	S 20°37'08.66" W	3.338	48	3,590,710.9439	522,555.9926
48	50	S 23°30'32.23" W CENTRO DE CURVA DELTA = 09°56'47.10" RADIO = 56.500	5.861	50	3,590,705.5726 LONG. CURVA = 5.864 SUB.TAN. = 2.935	522,553.6468 522,503.1118
50	52	N 71°29'40.06" W CENTRO DE CURVA DELTA = 18°52'46.33" RADIO = 56.500	111.884	52	3,590,741.0841 LONG. CURVA = 181.804 SUB.TAN. = 388.983	522,447.5482 522,503.1118
52	53	N 10°26'44.11" E	62.026	53	3,590,802.0826	522,458.7937
53	55	N 05°14'05.20" E CENTRO DE CURVA DELTA = 10°25'17.8" RADIO = 98.500	17.892	55	3,590,819.8996 LONG. CURVA = 17.916 SUB.TAN. = 6.883	522,460.4261 522,361.9261
55	16	S 74°42'02.95" E	162.473	16	3,590,777.0296	522,617.1411
SUPERFICIE = 99,198.932 m2 (SUPERFICIE = 9-91-98.932 HAS.) FCM						



TERRENOS PRESUNTOS NACIONALES